

SOUTHGATE RETAIL

2083 Siesta Drive | Sarasota, FL
FOR LEASE

AVAILABLE

F03
1

7
8
0
8
3

AVAILABLE
DAVID KINNARD
813-417-2300

PLEASE CONTACT THE
REALTOR FOR MORE INFO

FOR MORE INFORMATION
CONTACT THE REALTOR

FOR MORE INFORMATION
CONTACT THE REALTOR

FOR MORE INFORMATION
CONTACT THE REALTOR

FOR MORE INFORMATION
CONTACT THE REALTOR

FOR MORE INFORMATION
CONTACT THE REALTOR

FOR MORE INFORMATION
CONTACT THE REALTOR

gomerritt.com



THE SPACE

| | |
|------------|---|
| Location | 2083 Siesta Drive Sarasota, FL 34239 |
| County | Sarasota |
| Size | 850 SF |
| Space | Retail Suite |
| Lease Rate | \$22.00 PSF (Yearly) |
| Lease Type | NNN |

Notes CAM \$10.47

HIGHLIGHTS

- 850 sf retail suite available
- Prime Sarasota location
- Minutes to Siesta Key and Downtown Sarasota
- Strong neighborhood demographics
- Ideal for boutique retail, professional services, or wellness

POPULATION

| 1.00 MILE | 3.00 MILE | 5.00 MILE |
|-----------|-----------|-----------|
| 8,841 | 79,856 | 161,922 |

AVERAGE HOUSEHOLD INCOME

| 1.00 MILE | 3.00 MILE | 5.00 MILE |
|-----------|-----------|-----------|
| \$132,723 | \$135,195 | \$124,595 |

NUMBER OF HOUSEHOLDS

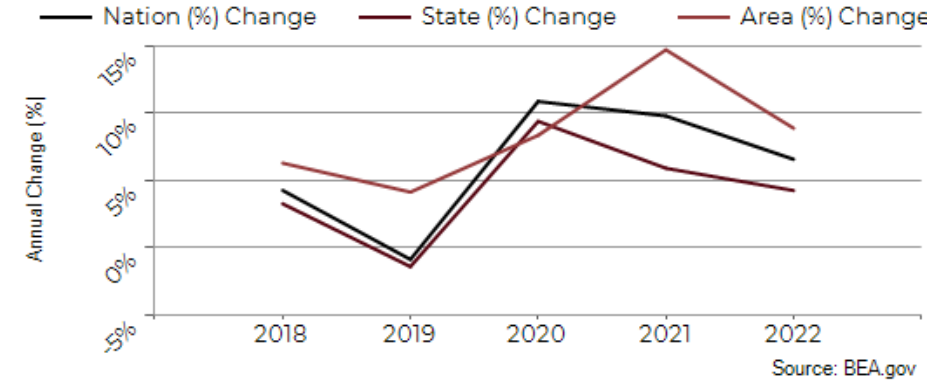
| 1.00 MILE | 3.00 MILE | 5.00 MILE |
|-----------|-----------|-----------|
| 4,096 | 38,410 | 75,285 |

PROPERTY FEATURES

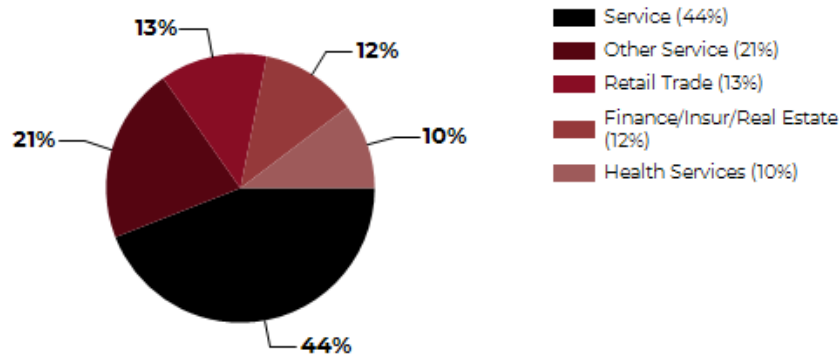
| | |
|--------------------------|--------|
| TOTAL TENANTS | 4 |
| BUILDING SF | 5,578 |
| GLA (SF) | 5,206 |
| LAND SF | 16,076 |
| YEAR BUILT | 1958 |
| YEAR RENOVATED | 2000 |
| ZONING TYPE | CG |
| LOCATION CLASS | A |
| NUMBER OF STORIES | 1 |
| NUMBER OF BUILDINGS | 1 |
| NUMBER OF PARKING SPACES | 9 |

- Located on Siesta Drive in the heart of Sarasota, the property enjoys excellent access between South Tamiami Trail (US 41) and Bahia Vista Street. The location is surrounded by established residential neighborhoods, Sarasota Memorial Hospital, Southside Village, and the downtown Sarasota market. Just minutes from Siesta Key, Downtown Sarasota, and US 41, the property provides convenient access for both customers and employees while benefiting from one of Sarasota's most desirable and densely populated trade areas.

Sarasota County GDP Trend

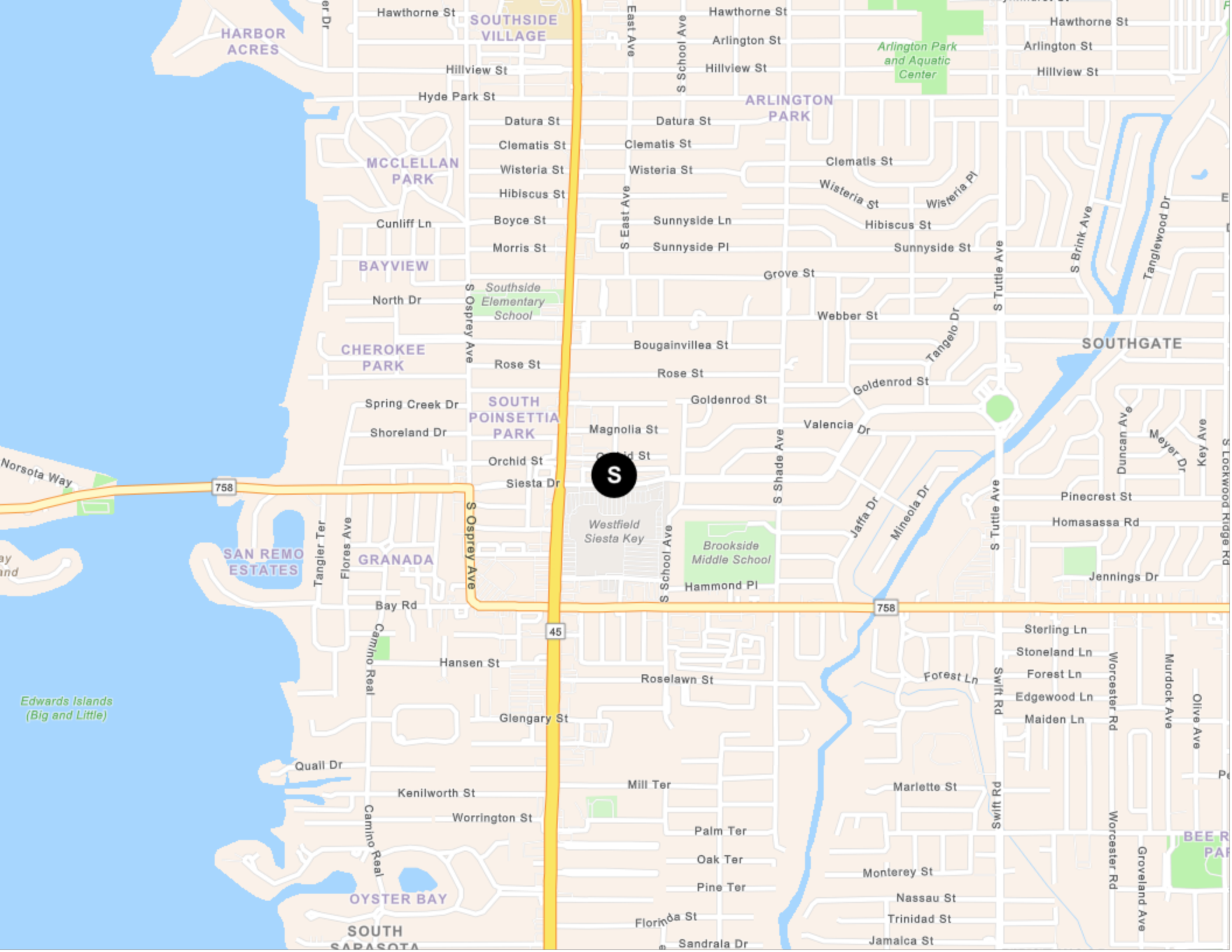


Major Industries by Employee Count



Largest Employers

| | |
|--|--------|
| Roper Technologies | 19,400 |
| Sarasota Memorial Health Care System | 10,597 |
| School Board of Sarasota County | 6,445 |
| Publix Super Markets | 2,812 |
| Helios Technologies | 2,300 |
| Infrastructure Consulting & Engineering, LLC | 524 |
| Sarasota Ford | 224 |
| Trump Media & Technology Group | 31 |



HARBOR ACRES

SOUTHSIDE VILLAGE

ARLINGTON PARK

Arlington Park and Aquatic Center

MCCLELLAN PARK

BAYVIEW

Southside Elementary School

CHEROKEE PARK

SOUTH POINSETTIA PARK

S

Westfield Siesta Key

Brookside Middle School

SAN REMO ESTATES

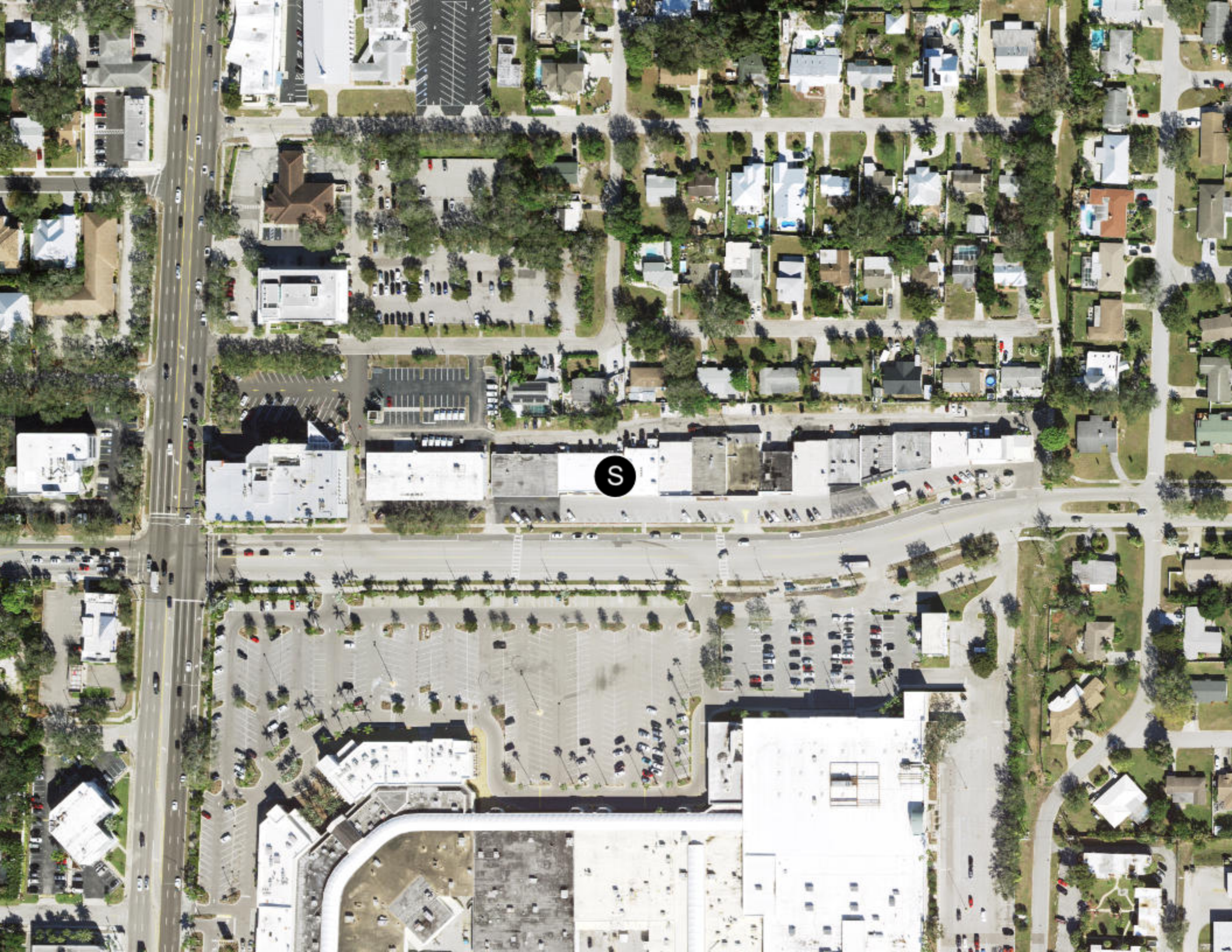
GRANADA

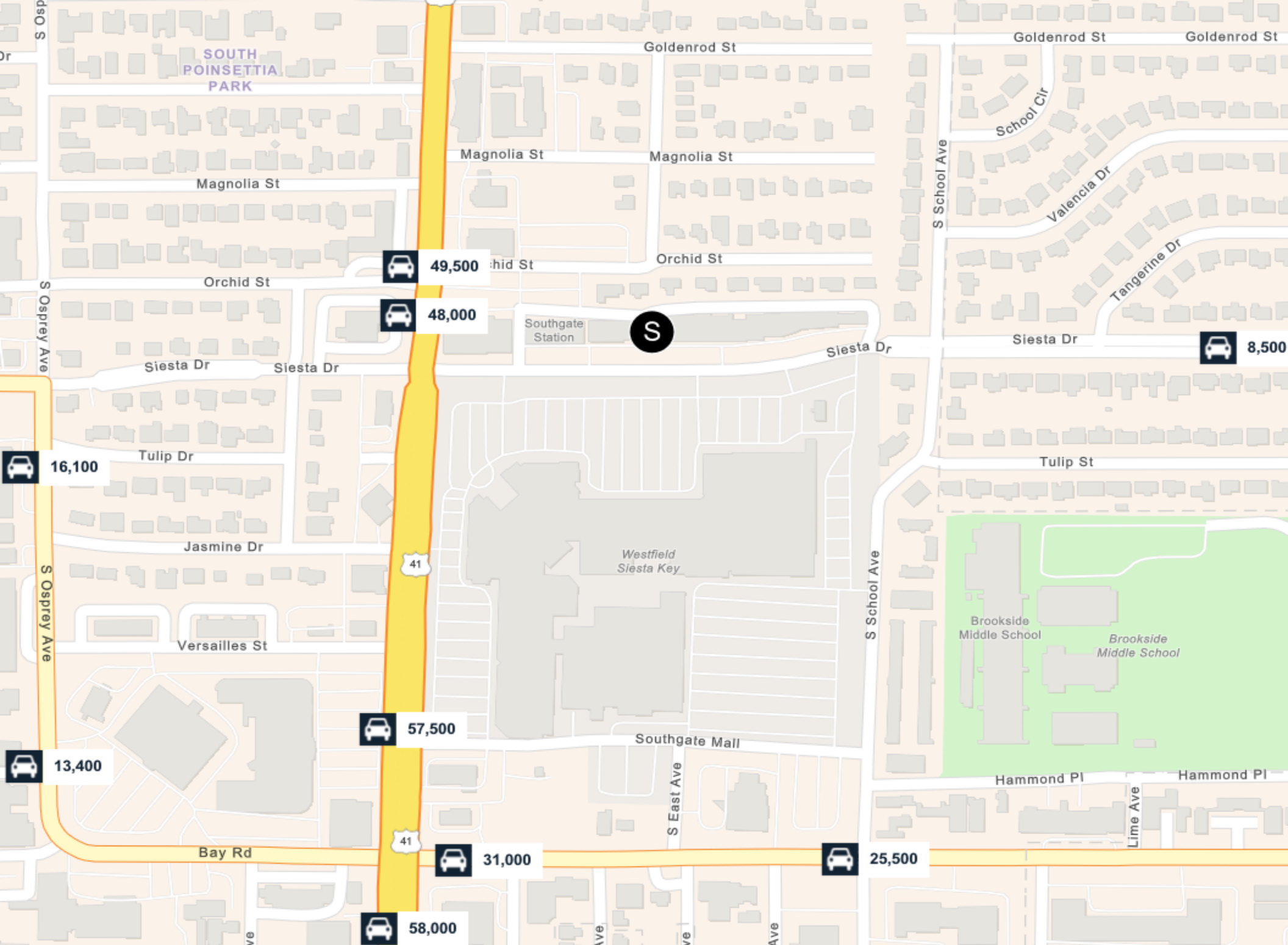
Edwards Islands (Big and Little)

OYSTER BAY

SOUTH SARASOTA

BEE R PARK





SOUTH POINSETTIA PARK

Goldenrod St

Goldenrod St

Goldenrod St

Magnolia St

Magnolia St

Magnolia St

Orchid St

Orchid St

Orchid St

Siesta Dr

Siesta Dr

Siesta Dr

Siesta Dr

8,500

Tulip Dr

16,100

Tulip St

Jasmine Dr

Westfield Siesta Key

41

Versailles St

S School Ave

Brookside Middle School

Brookside Middle School

57,500

Southgate Mall

S East Ave

Hammond Pl

Hammond Pl

13,400

Bay Rd

41

31,000

25,500

Lime Ave

58,000