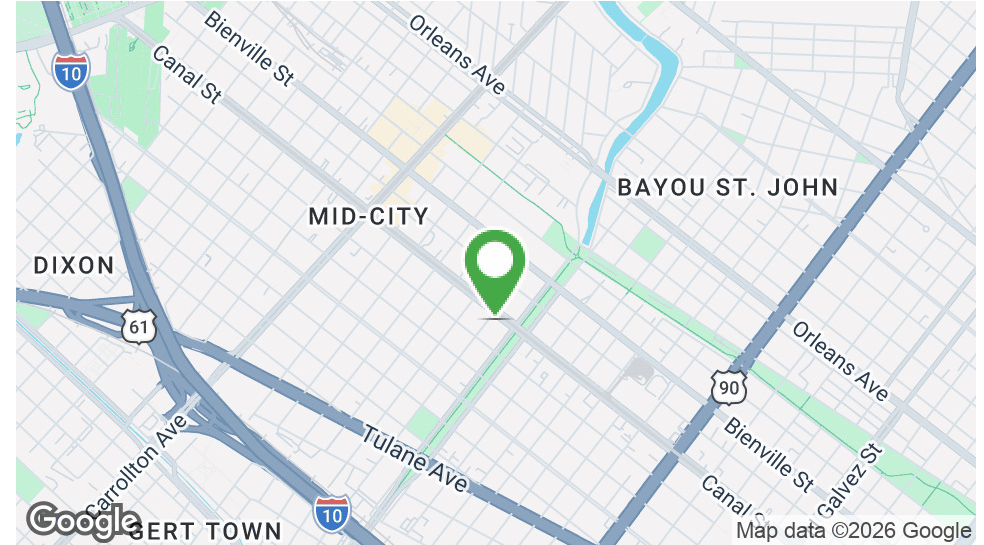




3426 Canal St, New Orleans, LA 70119
CANAL STREET OFFICE BUILDING FOR SALE

MATT EATON, CCIM • PARTNER
 OFFICE: 504.414.0703
 MOBILE: 504.339.2136
 matt@matteatonccim.com

MARTIN O. MILLER III, CCIM, SIOR • PARTNER
 OFFICE: 504.414.0703
 MOBILE: 504.616.5700
 momiller@ccim.net



PROPERTY DESCRIPTION

3426 Canal Street is a 2,963 sf office building situated in the heart of Mid-City New Orleans. Positioned on bustling Canal Street right on the streetcar line, the property enjoys excellent visibility, accessibility, and proximity to a variety of professional office users and neighborhood amenities.

The building features a full sprinkler system, a terracotta roof installed after Hurricane Katrina, a recently replaced sewer line, and ADA-compliant access, including an ADA ramp and related accessibility features.

Zoned HU-MU (Historic Urban Mixed-Use), the property offers flexibility for a wide range of office, professional, and commercial uses.

* 3426 Canal and 3420 Canal can be purchased as a package for \$1,250,000. Ask agent for more details.

OFFERING SUMMARY

Sale Price:	\$800,000
Lot Size:	4,814 SF
Building Size:	2,963 SF

DEMOGRAPHICS	1 MILE	3 MILES	5 MILES
Total Households	10,615	76,387	153,384
Total Population	24,243	175,159	348,741
Average HH Income	\$88,358	\$96,209	\$97,644

OFFICE BUILDING FOR SALE

PROPERTY SUMMARY



SOUTHEAST COMMERCIAL REAL ESTATE





3426 Canal St, New Orleans, LA 70119
**CANAL STREET OFFICE
BUILDING FOR SALE**

MATT EATON, CCIM • PARTNER
OFFICE: 504.414.0703
MOBILE: 504.339.2136
matt@matteatonccim.com

MARTIN O. MILLER III, CCIM, SIOR • PARTNER
OFFICE: 504.414.0703
MOBILE: 504.616.5700
momiller@ccim.net



OFFICE BUILDING FOR SALE

ADDITIONAL PHOTOS



**SOUTHEAST
COMMERCIAL
REAL ESTATE**

SOUTHEAST COMMERCIAL REAL ESTATE | 2310 19th Street, Gulfport, MS 39501 | 3900 N Causeway Blvd., Suite 100, Metairie, LA 70002 | www.southeastcre.com

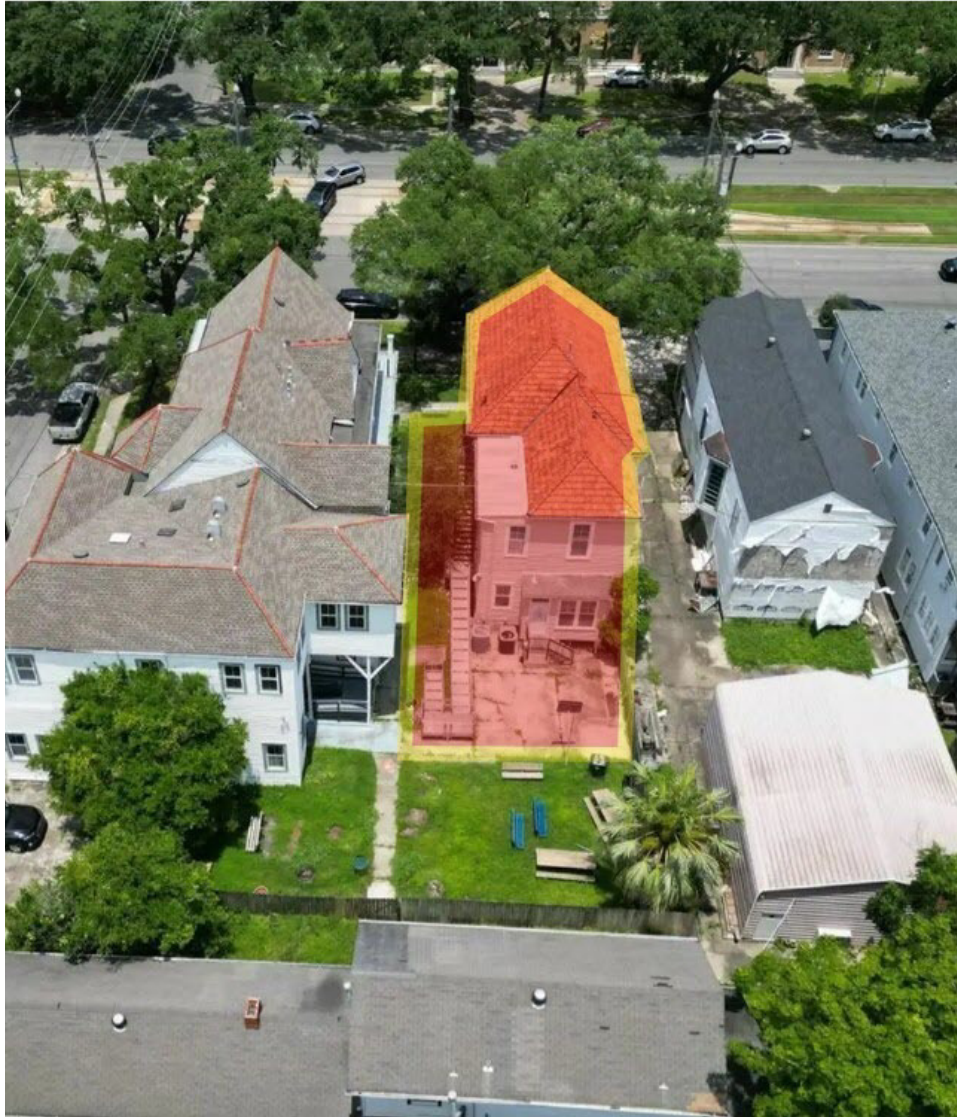




3426 Canal St, New Orleans, LA 70119
CANAL STREET OFFICE BUILDING FOR SALE

MATT EATON, CCIM • PARTNER
 OFFICE: 504.414.0703
 MOBILE: 504.339.2136
 matt@matteatonccim.com

MARTIN O. MILLER III, CCIM, SIOR • PARTNER
 OFFICE: 504.414.0703
 MOBILE: 504.616.5700
 momiller@ccim.net



Sizes And Dimensions Are Approximate, Actual May Vary

OFFICE BUILDING FOR SALE

AERIAL AND FLOOR PLAN



SOUTHEAST COMMERCIAL REAL ESTATE

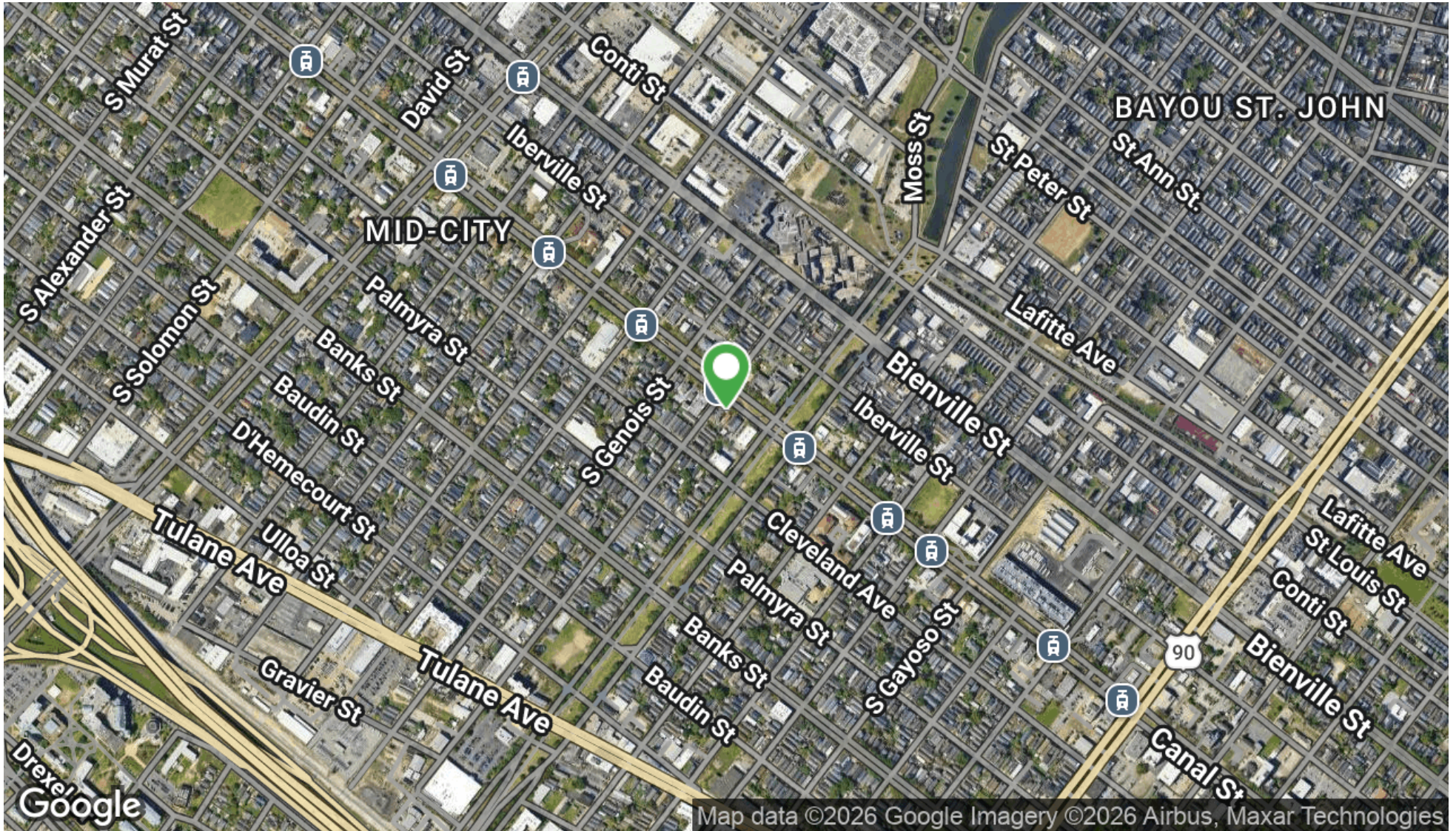




3426 Canal St, New Orleans, LA 70119
CANAL STREET OFFICE BUILDING FOR SALE

MATT EATON, CCIM • PARTNER
 OFFICE: 504.414.0703
 MOBILE: 504.339.2136
 matt@matteatonccim.com

MARTIN O. MILLER III, CCIM, SIOR • PARTNER
 OFFICE: 504.414.0703
 MOBILE: 504.616.5700
 momiller@ccim.net



OFFICE BUILDING FOR SALE

AERIAL MAP



**SOUTHEAST
 COMMERCIAL
 REAL ESTATE**





3426 Canal St, New Orleans, LA 70119

CANAL STREET OFFICE BUILDING FOR SALE

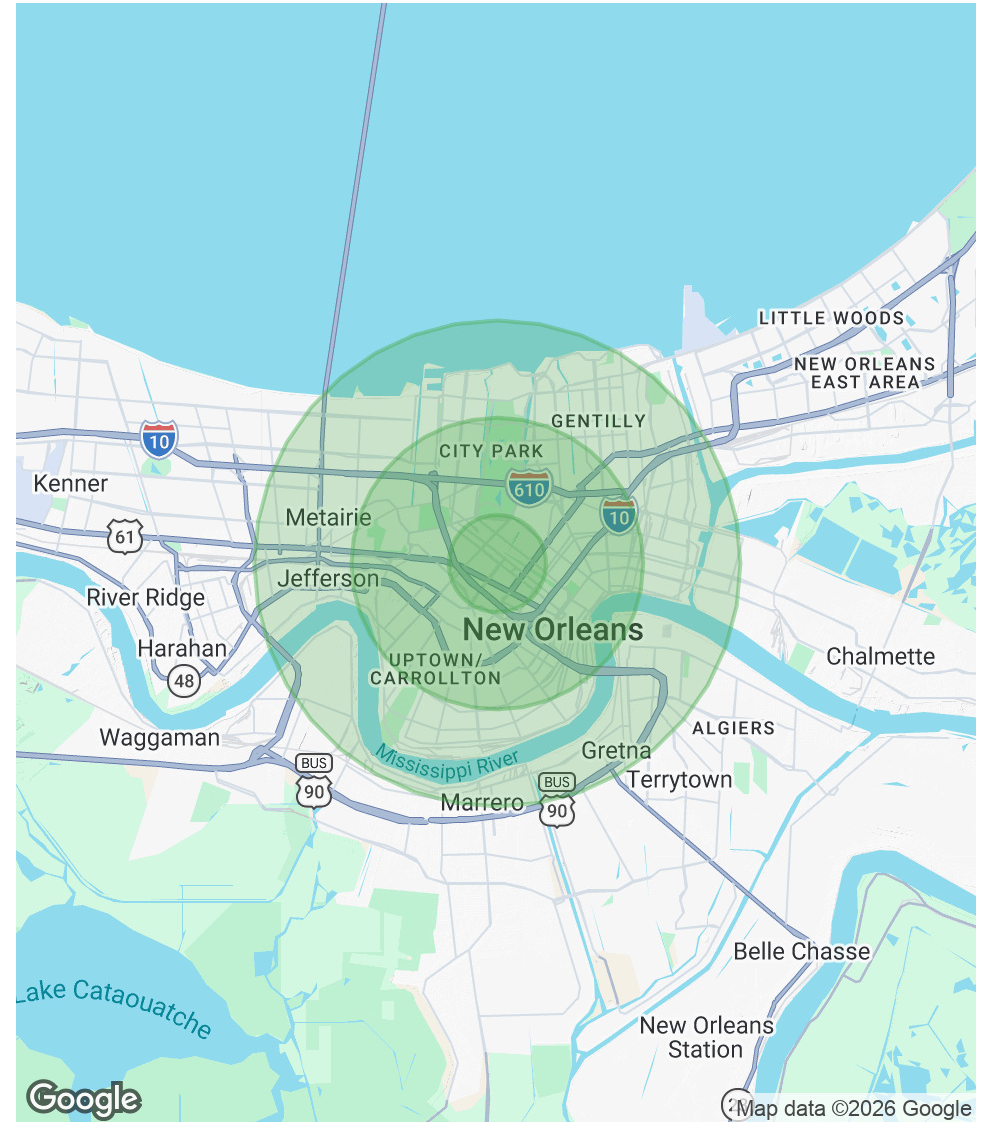
MATT EATON, CCIM • PARTNER
OFFICE: 504.414.0703
MOBILE: 504.339.2136
matt@matteatonccim.com

MARTIN O. MILLER III, CCIM, SIOR • PARTNER
OFFICE: 504.414.0703
MOBILE: 504.616.5700
momiller@ccim.net

POPULATION	1 MILE	3 MILES	5 MILES
Total Population	24,243	175,159	348,741
Average Age	36.7	39.3	40.0
Average Age (Male)	39.0	38.4	38.9
Average Age (Female)	35.6	40.9	41.2

HOUSEHOLDS & INCOME	1 MILE	3 MILES	5 MILES
Total Households	10,615	76,387	153,384
# of Persons per HH	2.3	2.3	2.3
Average HH Income	\$88,358	\$96,209	\$97,644
Average House Value	\$469,400	\$473,699	\$437,434

2023 American Community Survey (ACS)



OFFICE BUILDING FOR SALE

DEMOGRAPHICS MAP & REPORT



SOUTHEAST COMMERCIAL
REAL ESTATE