

## EXECUTIVE SUMMARY

ORLANDO, FL 32819

# 6000 Turkey Lake Rd Ste 209



### OFFERING SUMMARY

Lease Rate:	Please Inquire
Available SF:	1,935 SF
Zoning:	P-O

### PROPERTY OVERVIEW

This 1,935 SF turnkey suite offers an efficient floor plan featuring 2-3 dedicated offices, conference room, and a professional/medical reception area. Situated in close proximity to Orlando Health Dr. P. Phillips Hospital, Sand Lake Road's "Restaurant Row," and the Universal Orlando, this location offers accessibility and convenience in one of Central Florida's most sought-after professional/medical hubs.

### PROPERTY HIGHLIGHTS

- **\*\*Available April 1st\*\***
- Neighboring Tenants with Other Medical and Professional Office Users
- Close Proximity to Sand Lake Rd
- Less than 1/2 Mile from Doctor Phillips High School and 2 Miles from the Universal Orlando Resort

PRESENTED BY  
**ASHLEY WALKER**  
407.430.3462  
awalker@millenia-partners.com

OFFICE BUILDING

# For Lease

ADDITIONAL PHOTOS

ORLANDO, FL 32819

6000 Turkey Lake Rd Ste 209



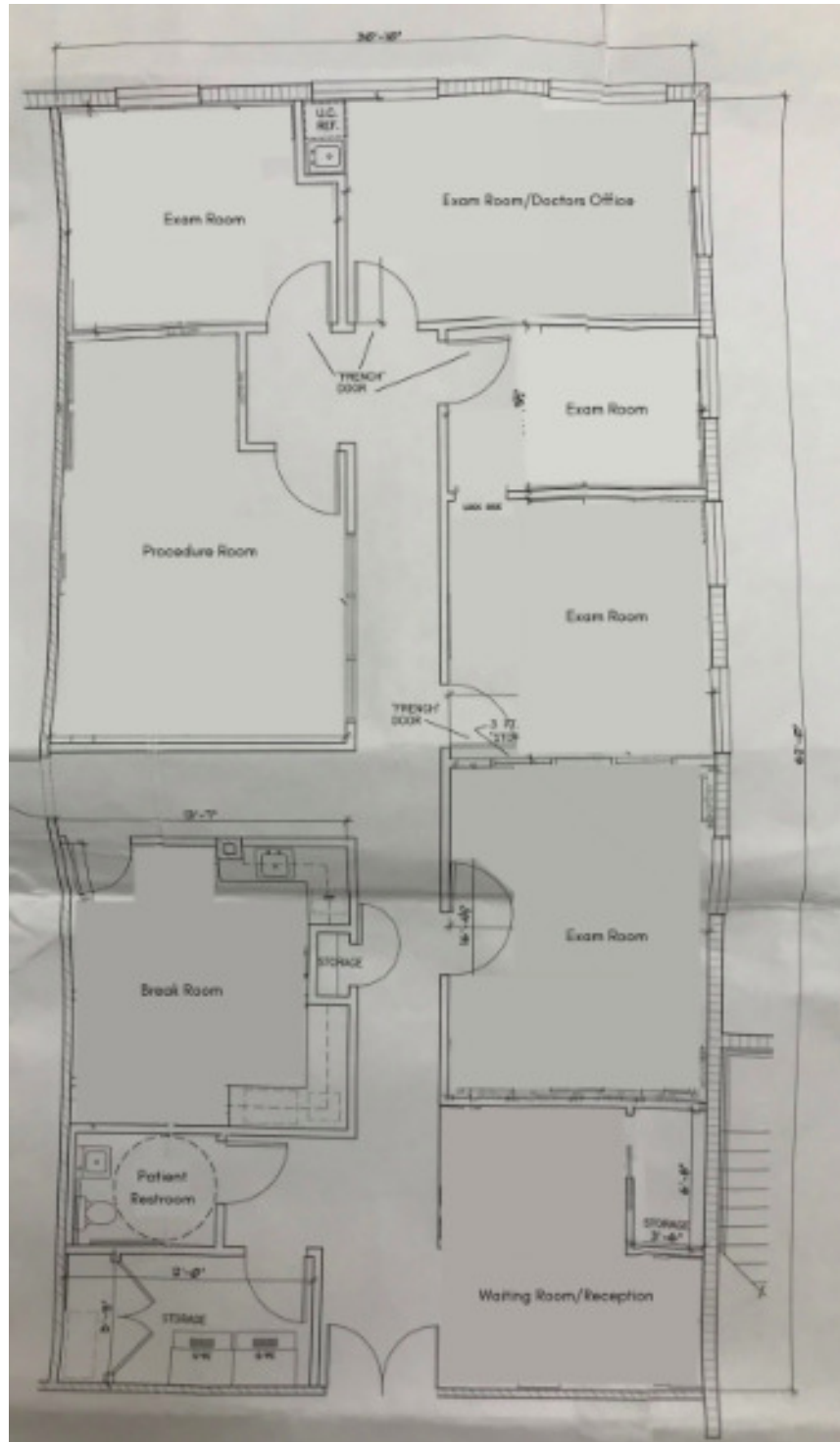
PRESENTED BY  
**ASHLEY WALKER**  
407.430.3462  
awalker@millenia-partners.com

OFFICE BUILDING  
**For Lease**

FLOOR PLAN

ORLANDO, FL 32819

6000 Turkey Lake Rd Ste 209



PRESENTED BY  
**ASHLEY WALKER**  
407.430.3462  
awalker@millenia-partners.com

OFFICE BUILDING  
**For Lease**

RETAILER MAP

ORLANDO, FL 32819

# 6000 Turkey Lake Rd Ste



Map data ©2026 Google Imagery ©2026 Airbus  
Maxar Technologies

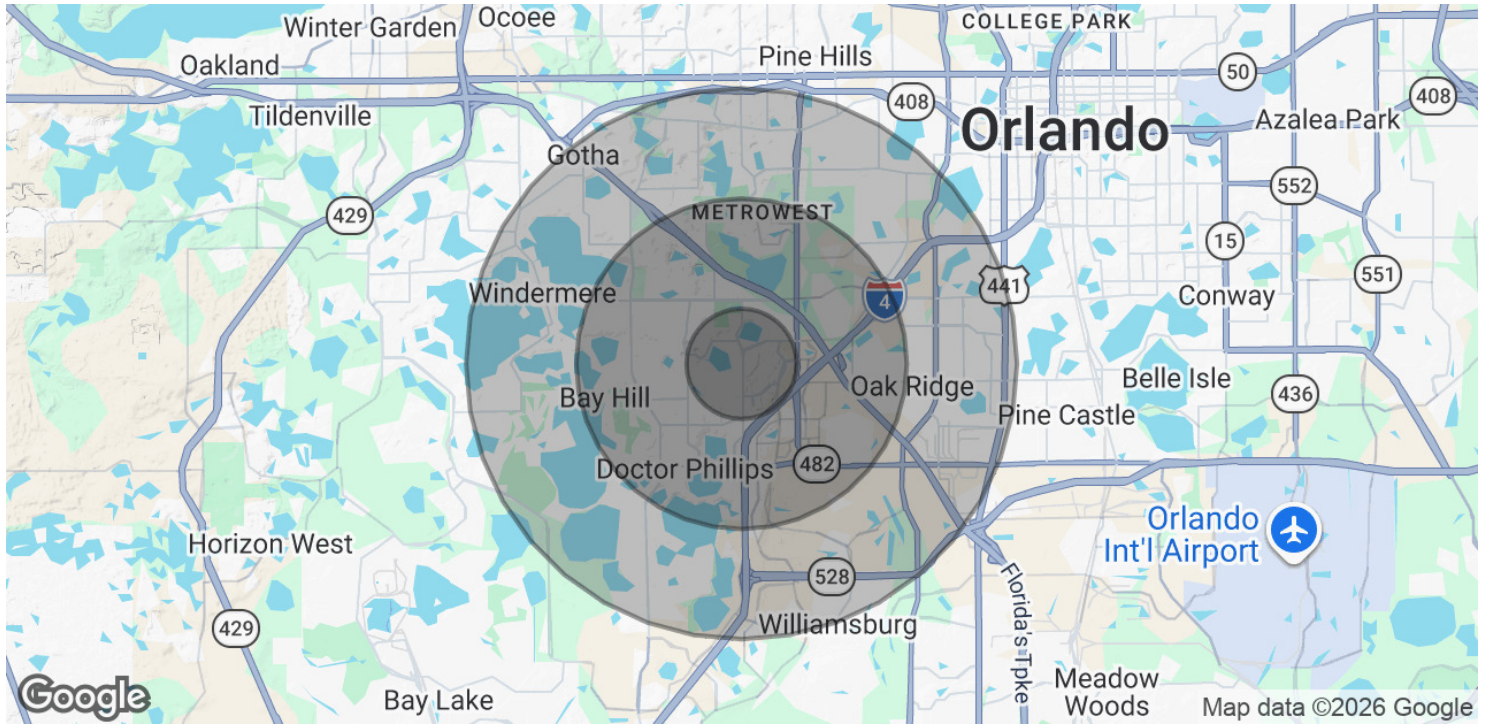
PRESENTED BY  
**ASHLEY WALKER**  
 407.430.3462  
 awalker@millenia-partners.com

OFFICE BUILDING  
**For Lease**

# DEMOGRAPHICS MAP & REPORT

ORLANDO, FL 32819

# 6000 Turkey Lake Rd Ste



## POPULATION

	1 MILE	3 MILES	5 MILES
Total Population	4,720	86,004	204,035
Average Age	44.7	36.6	37.1
Average Age (Male)	43.3	36.1	36.3
Average Age (Female)	44.4	37.1	36.9

## HOUSEHOLDS & INCOME

	1 MILE	3 MILES	5 MILES
Total Households	1,914	32,525	74,704
# of Persons per HH	2.5	2.6	2.7
Average HH Income	\$115,804	\$112,423	\$107,558
Average House Value	\$480,114	\$431,250	\$432,605

2023 American Community Survey (ACS)

PRESENTED BY  
**ASHLEY WALKER**  
 407.430.3462  
 awalker@millenia-partners.com

OFFICE BUILDING  
**For Lease**