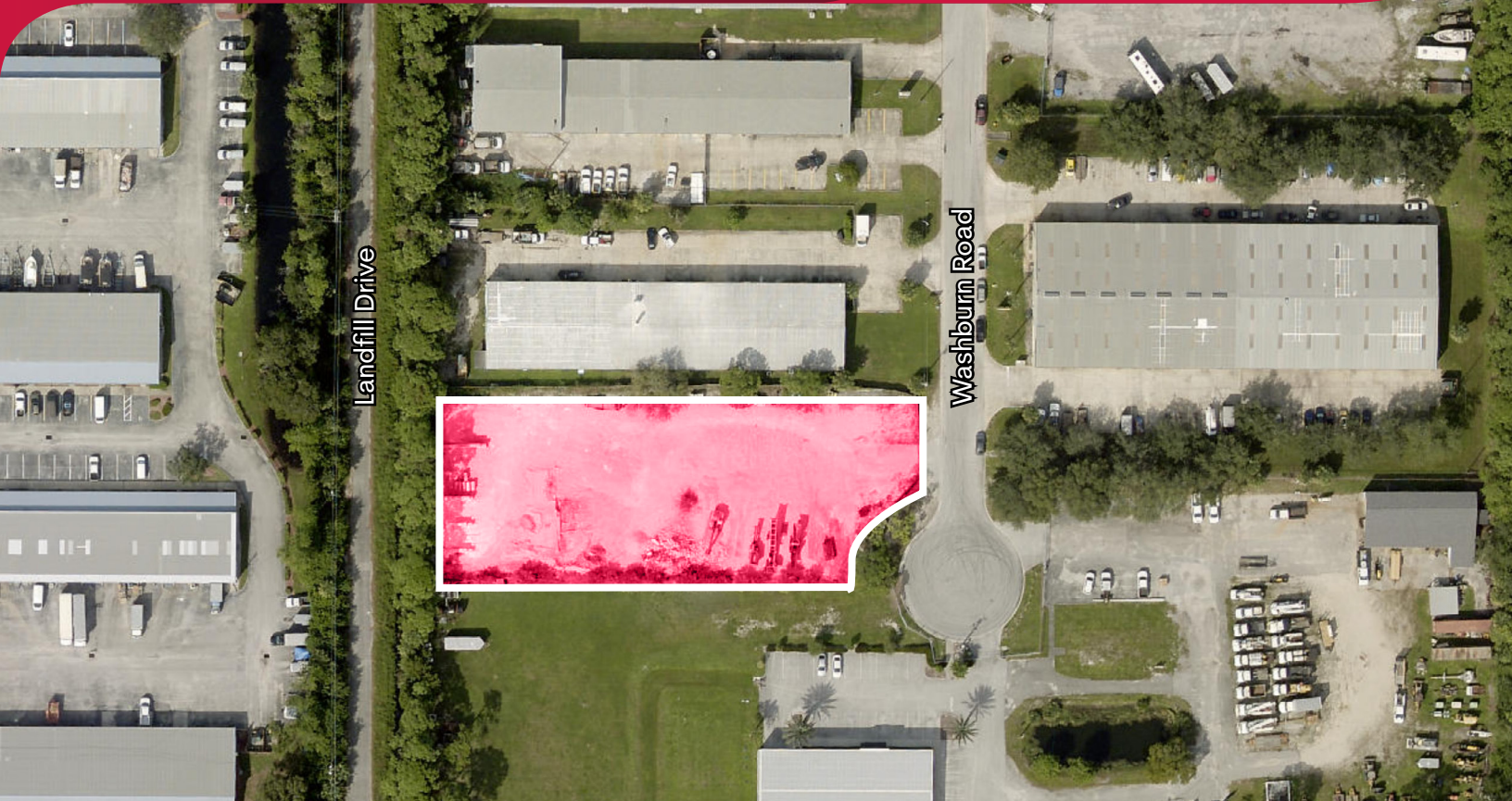


FOR LEASE - INDUSTRIAL LAYDOWN YARD

598 WASHBURN ROAD

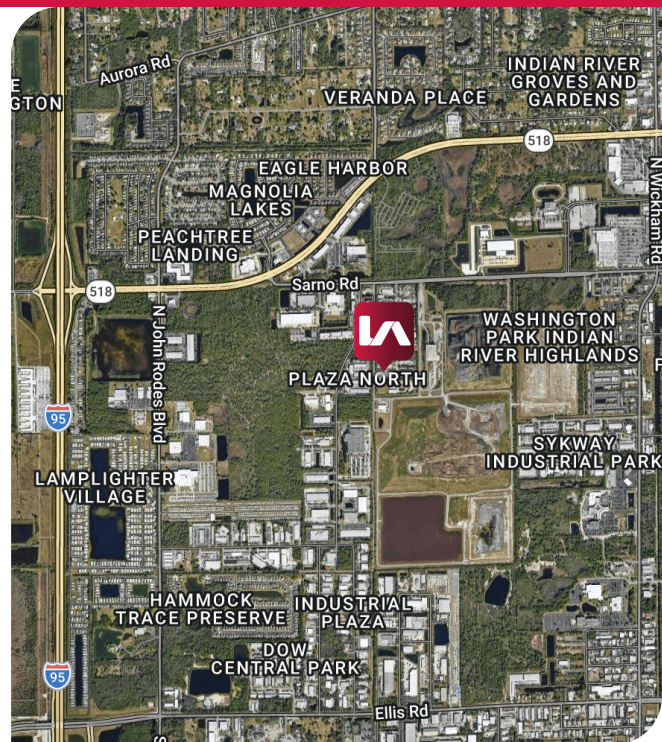
MELBOURNE, FL 32934



PROPERTY HIGHLIGHTS

- Up to ±1.06 Acres of Industrial Laydown Yard
- Cleared & Fenced
- Zoned M-1 (Brevard County)
- Ideal Use: Equipment storage, construction material, utility contractor, fleet vehicle parking, etc.
- Minutes to I-95 & Wickham Road

LEASE RATE: \$7,000/MO NNN



Contact:

Charles W. Duvall
Associate
cduvall@lee-associates.com
D 321.243.0857

LOCATION OVERVIEW



PROXIMITY TO:		
1	Melbourne International Airport	5.8 Miles 13 Minute Drive
2	Northrop Grumman	4.4 Miles 12 Minute Drive
3	L3Harris Technologies	5.3 Miles 13 Minute Drive
4	Downtown Melbourne	7.6 Miles 18 Minute Drive



Contact:

Charles W. Duvall
Associate
cduvall@lee-associates.com
D 321.243.0857

All information furnished regarding property for sale, rental or financing is from sources deemed reliable, but no warranty or representation is made to the accuracy thereof and same is submitted to errors, omissions, change of price, rental or other conditions prior to sale, lease or financing or withdrawal without notice. No liability of any kind is to be imposed on the broker herein.