

500 Coventry, Suite 270

Crystal Lake, IL 60014

For Lease

MLS #11275624

OFFICE



OFFICE SUITE 1,827 SF

\$2,756/MO.

\$10.00 PSF (NNN)

COVENTRY CORPORATE CENTER

SUITE 270: 1,827 SF 2nd floor elevator equipped, with interior entrance off common hallway. Open reception/waiting area, 6 private offices, open work area and common restrooms. Total monthly including NNN \$2,756.00.

2 story atrium with natural light, seating area and common restrooms. CAM includes heat and A/C. Broker has interest.

Demographics	1 Mile	3 Miles	5 Miles
Total Population	11,254	57,980	124,769
Average HH Income	\$94,203	\$128,148	\$141,142

Specifications

Building Size:	49,511 SF
Year Built:	1978
HVAC System:	GFA/ Central Air
Electrical:	100 amp
Ceiling Height:	10'
Washrooms:	Common
Elevator:	Yes
Parking:	Common
Sewer/Water:	City
Zoning:	B
CAM & Taxes	\$2.29 psf Taxes (2025) \$5.87 psf CAM (2024)
PIN #:	19-05-355-007 & 009

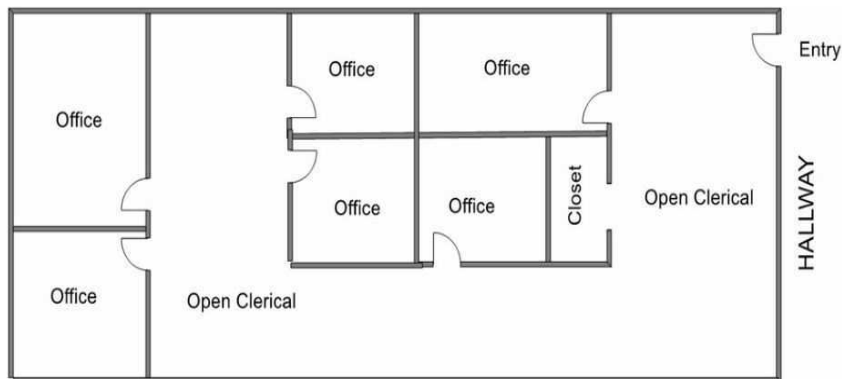
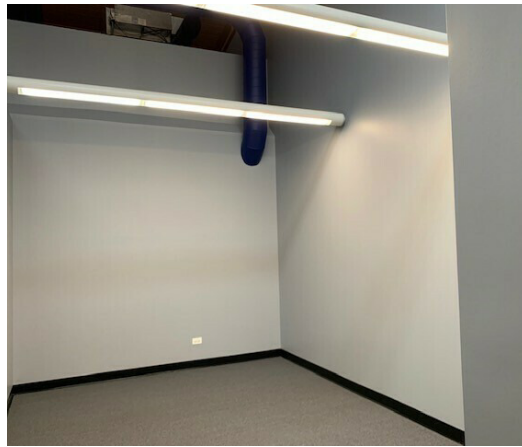
[CLICK HERE TO VIEW OUR WEBSITE](#)

No warranty or representation is made as to the accuracy of the foregoing information. Terms of sale or lease and availability are subject to change or withdrawal without notice. This document is for information purposes only. No offer of sub-agency is being made.



Heather Schweitzer
 President / Designated Managing Broker
 HeatherS@PremierCommercialRealty.com
 O: 847.854.2300 x15 C: 815.236.9816

OFFICE



Measurements Approximate

SUITE 270 1,827 SF

[CLICK HERE TO VIEW OUR WEBSITE](#)

No warranty or representation is made as to the accuracy of the foregoing information. Terms of sale or lease and availability are subject to change or withdrawal without notice. This document is for information purposes only. No offer of sub-agency is being made.



Heather Schweitzer
President / Designated Managing Broker
HeatherS@PremierCommercialRealty.com
O: 847.854.2300 x15 C: 815.236.9816