

SABAL PARK DISTRIBUTION CENTER #13

EAST TAMPA SUBMARKET

3502 Queen Palm Dr.
Tampa, FL 33619



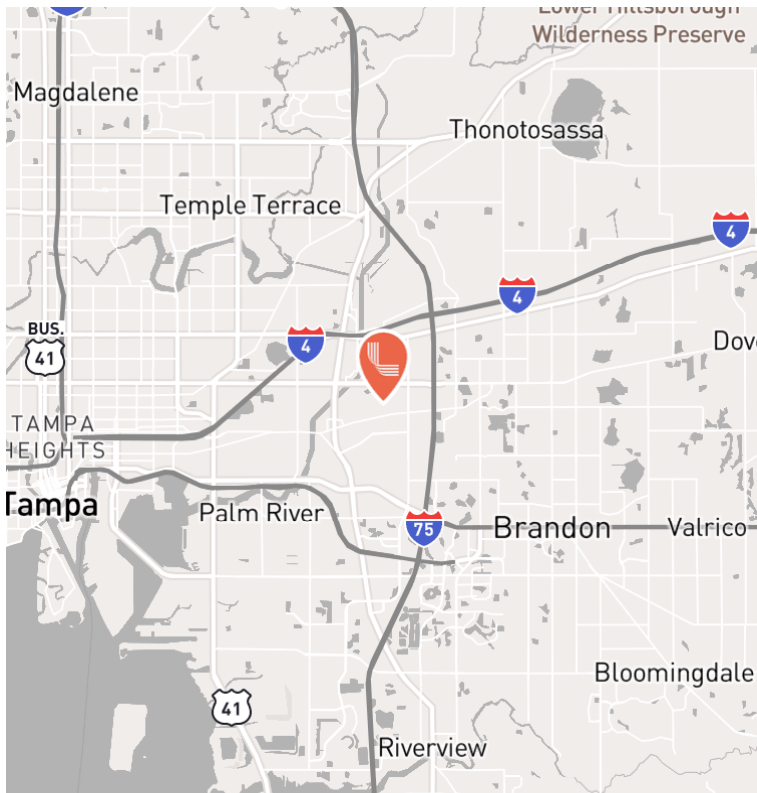
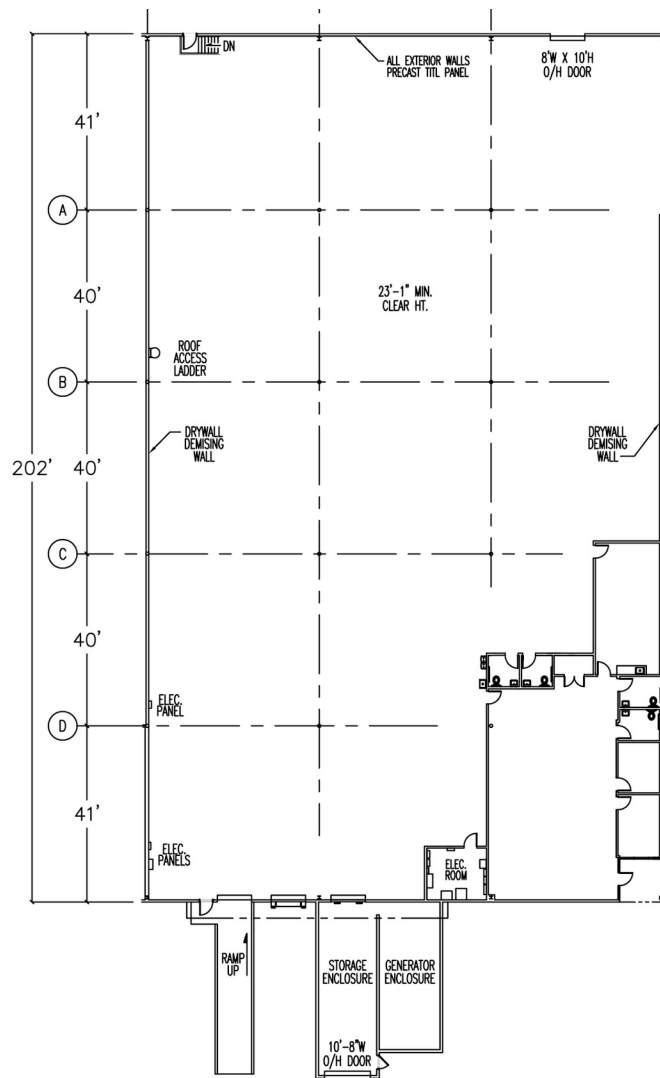
FOR LEASE

Suite 3502- B & C

23,000 - 47,083 SF

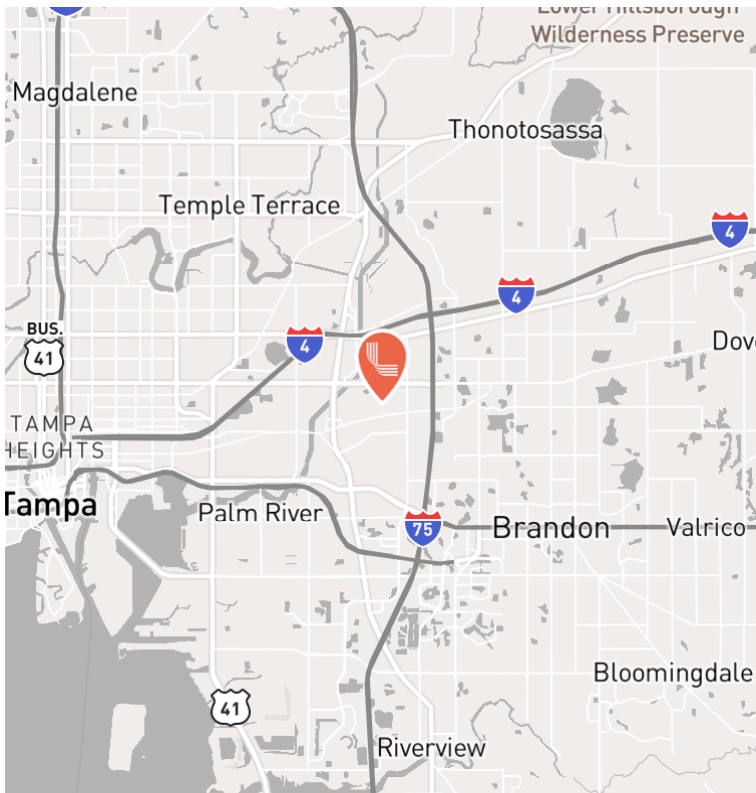
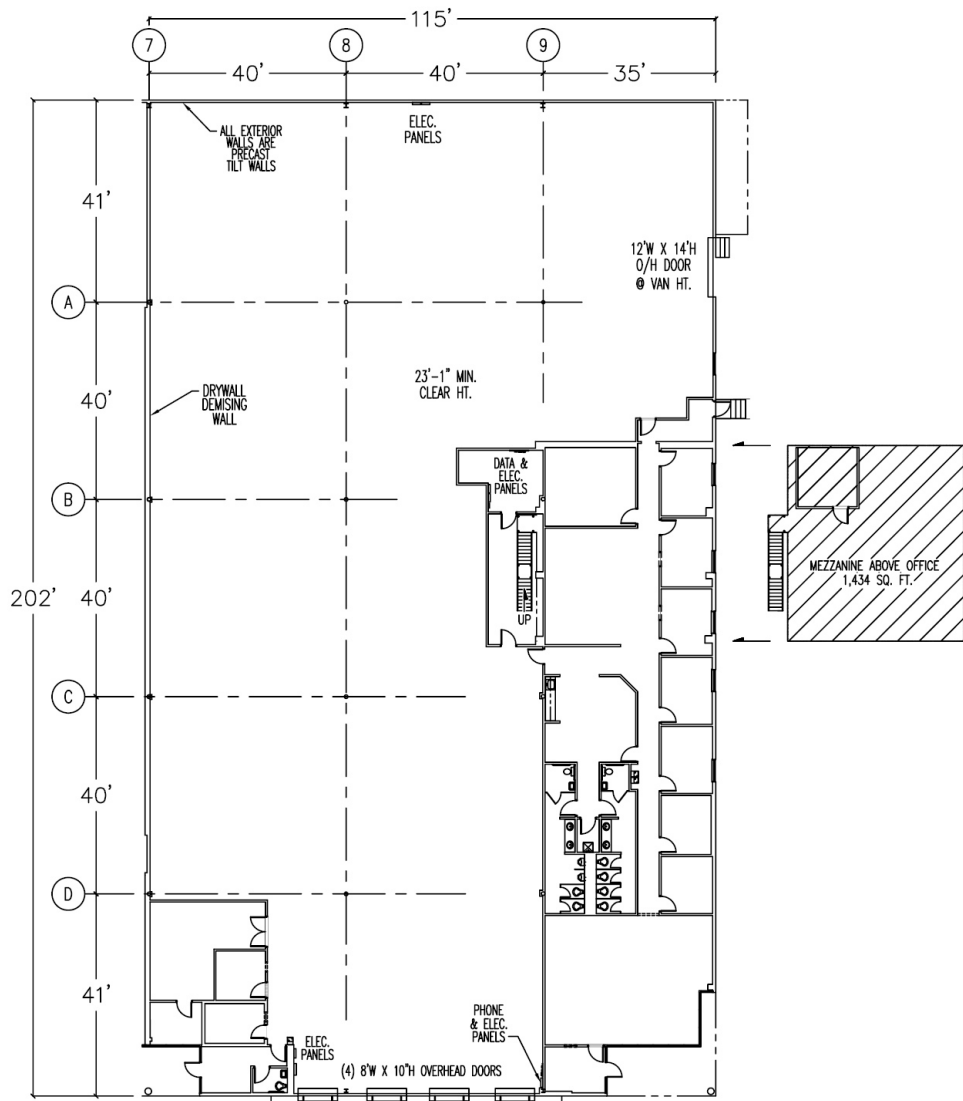


LEASED BY
FOUNDRY
COMMERCIAL



3502 - B BUILDING FEATURES

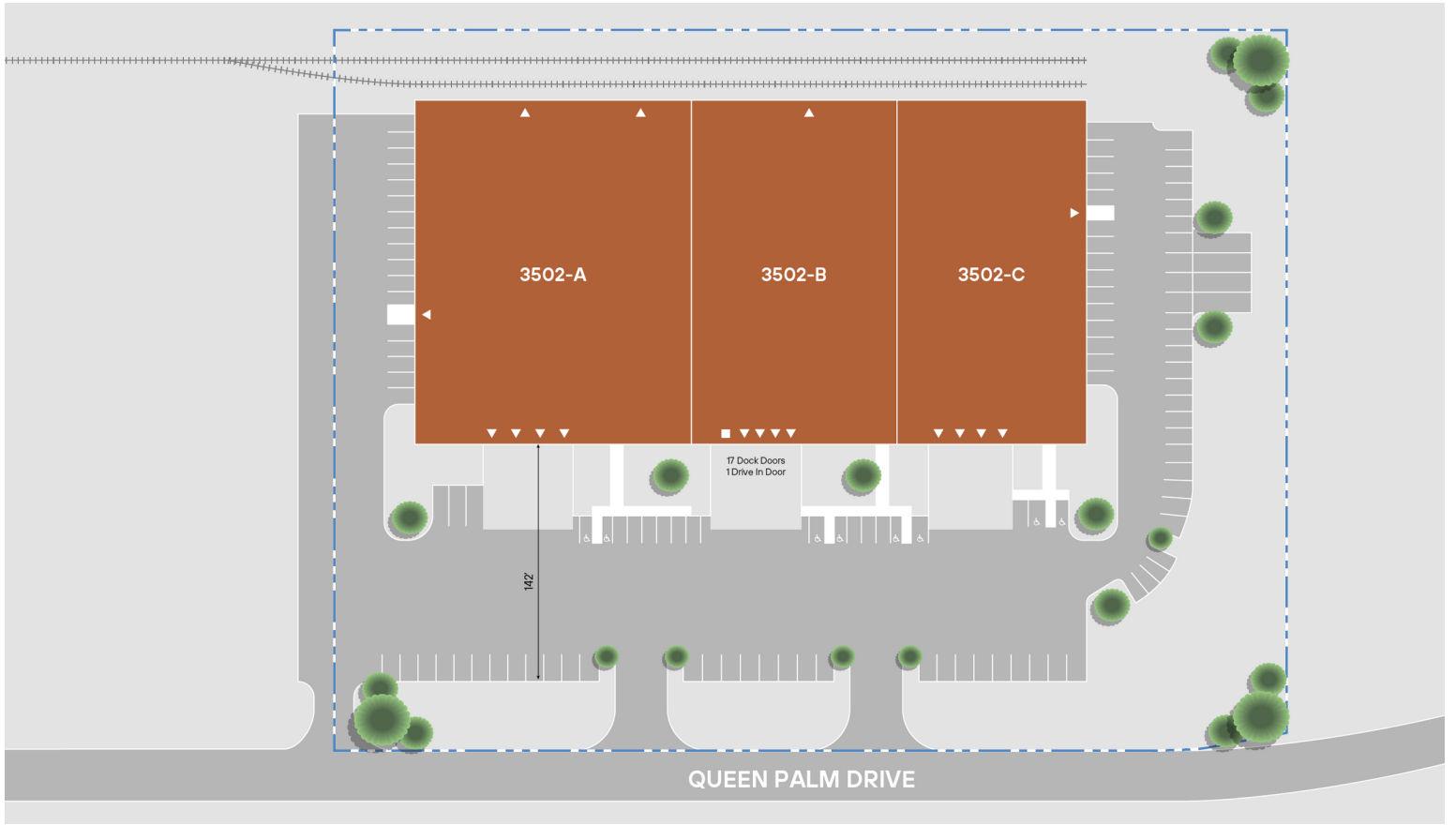
Available SF	24,083 SF
Office SF	2,621 SF
Availability	Now
Dock Doors	Two (2) Dock High Doors
Clear Height	22'
Sprinklers	Wet Pipe
Ramps	One (1) Ramp



3502 - C BUILDING FEATURES

Available SF	23,000 SF
	1/4 AC outdoor storage
Office SF	4,818 SF
Availability	10/1/2026
Dock Doors	Four (4) Dock High Doors
Clear Height	22'
Sprinklers	Wet Pipe
Ramps	One (1) Ramp

Property Location



CONTACT INFORMATION

3502 Queen Palm Dr
Tampa, FL 33619

Caitlin Quinlan

caitlin.quinlan@foundrycommercial.com
(540) 550-2549

Justin Ruby, SIOR, CCIM

justin.ruby@foundrycommercial.com
(407) 865-0311

Jesse Drake

jesse.drake@foundrycommercial.com
(813) 449-2955

This document is for informational purposes only and does not constitute an offer or acceptance of a lease. Any lease agreement must be in writing and signed by the landlord. No representations or warranties are made except as expressly stated in a signed lease. Information is provided "as is" and may be subject to errors or change without notice.

