

Office Space for Lease
191 Sammons Industrial Parkway
Eatonton, GA 31024



Summary

Area Info

Photos

Aerial

Site Map



LEASE PRICE: \$1,500/Month (Utilities included)

CONTACT

Jonathan Schuemann
478-746-9421 Office
561-676-4633 Cell
jonathan@fickling.com

Patty Burns, CCIM, ALC
478-746-9421 Office
478-951-5100 Cell
patty@fickling.com

Trip Wilhoit, CCIM, ALC
478-746-9421 Office
478-960-4080 Cell
trip@fickling.com



577 Mulberry St, Suite 1100
Macon, GA 31201
478.746.9421 Office
<https://commercial.fickling.com>

www.georgiacommercialrealestate.net

This information is from resources deemed to be reliable and is subject to change without notice. No warranties or guarantees for accuracy are made by Fickling and Company.

Office Space for Lease
191 Sammons Industrial Parkway
Eatonton, GA 31024



Summary

Area Info

Photos

Aerial

Site Map

PROPERTY INFORMATION

BUILDING

Property Address: 191 Sammons Industrial Parkway
 Eatonton, GA 31024

County: Putnam

Total Size: 950 SF

Available: 950 SF

Utilities: All Available

Parking: Paved

Traffic Count: 1,100 VPD – Sammons Industrial Pkwy
 15,676 VPD– Lake Oconee Pkwy

SITE

Site Size: 1.31 AC

Parcel ID: 102D077

Zoning: C-2

Demographics 2025	1 Mile	3 Miles	5 Miles
Population	752	5,766	13,656
Avg HH Income	\$160,179	\$163,174	\$188,802
Median Age	54.8	56.5	58.6

LEASE PRICE: \$1,500/Month (Utilities included)

CONTACT

Jonathan Schuemann
 478-746-9421 Office
 561-676-4633 Cell
jonathan@fickling.com

Patty Burns, CCIM, ALC
 478-746-9421 Office
 478-951-5100 Cell
patty@fickling.com

Trip Wilhoit, CCIM, ALC
 478-746-9421 Office
 478-960-4080 Cell
trip@fickling.com



577 Mulberry St, Suite 1100
 Macon, GA 31201
 478.746.9421 Office
<https://commercial.fickling.com>

www.georgiacommercialrealestate.net

This information is from resources deemed to be reliable and is subject to change without notice. No warranties or guarantees for accuracy are made by Fickling and Company.

Office Space for Lease

191 Sammons Industrial Parkway
Eatonton, GA 31024



Summary

Area Info

Photos

Aerial

Site Map

SITE

Office building with approximately 950 SF of efficient layout. Private offices, reception area, restrooms, and breakroom for a professional and productive office space. Paved parking lot with ample space for employees and clients. Can be leased with or without existing furniture.

LOCATION

Located within a growing commercial corridor, with convenient access to Downtown Eatonton. Close proximity to Lake Oconee and surrounding affluent residential communities. Neighbors include Publix, Ace Hardware, Mellow Mushroom, Wells Fargo, CVS Pharmacy, Lakeside Millworks, and Outdoor Innovations of Georgia.

HIGHLIGHTS

- Move-in ready professional office space
- Built-out suite with private offices and reception area
- Ample on-site parking for employees and clients
- Easy client access with strong surrounding commercial activity
- Attractive demographics with strong household incomes in the trade area
- Minimal startup costs due to existing office buildout
- Professional image without cost of large office space
- Property can be leased with or without the existing furniture

CONTACT

Jonathan Schuemann
478-746-9421 Office
561-676-4633 Cell
jonathan@fickling.com

Patty Burns, CCIM, ALC
478-746-9421 Office
478-951-5100 Cell
patty@fickling.com

Trip Wilhoit, CCIM, ALC
478-746-9421 Office
478-960-4080 Cell
trip@fickling.com



577 Mulberry St, Suite 1100
Macon, GA 31201
478.746.9421 Office
<https://commercial.fickling.com>

Office Space for Lease

191 Sammons Industrial Parkway
Eatonton, GA 31024



Summary

Area Info

Photos

Aerial

Site Map



CONTACT

Jonathan Schuemann
478-746-9421 Office
561-676-4633 Cell
jonathan@fickling.com

Patty Burns, CCIM, ALC
478-746-9421 Office
478-951-5100 Cell
patty@fickling.com

Trip Wilhoit, CCIM, ALC
478-746-9421 Office
478-960-4080 Cell
trip@fickling.com

www.georgiacommercialrealestate.net



577 Mulberry St, Suite 1100
Macon, GA 31201
478.746.9421 Office
<https://commercial.fickling.com>

This information is from resources deemed to be reliable and is subject to change without notice. No warranties or guarantees for accuracy are made by Fickling and Company.

Office Space for Lease

191 Sammons Industrial Parkway
Eatonton, GA 31024



Summary

Area Info

Photos

Aerial

Site Map



CONTACT

Jonathan Schuemann
478-746-9421 Office
561-676-4633 Cell
jonathan@fickling.com

Patty Burns, CCIM, ALC
478-746-9421 Office
478-951-5100 Cell
patty@fickling.com
www.georgiacommercialrealestate.net

Trip Wilhoit, CCIM, ALC
478-746-9421 Office
478-960-4080 Cell
trip@fickling.com



577 Mulberry St, Suite 1100
Macon, GA 31201
478.746.9421 Office
<https://commercial.fickling.com>

Office Space for Lease
191 Sammons Industrial Parkway
Eatonton, GA 31024



Summary

Area Info

Photos

Aerial

Site Map



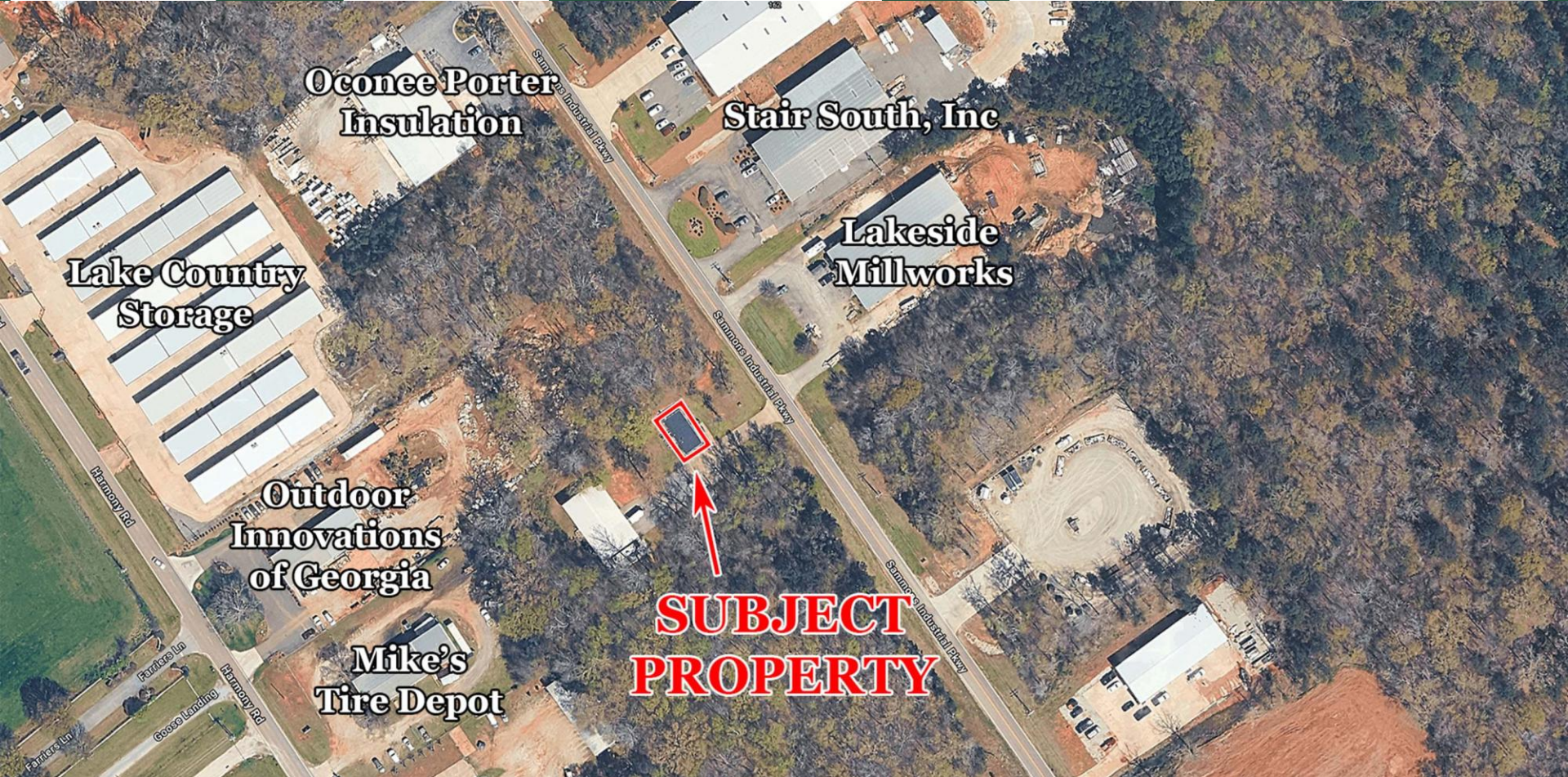
CONTACT	Jonathan Schuemann 478-746-9421 Office 561-676-4633 Cell jonathan@fickling.com	Patty Burns, CCIM, ALC 478-746-9421 Office 478-951-5100 Cell patty@fickling.com www.georgiacommercialrealestate.net	Trip Wilhoit, CCIM, ALC 478-746-9421 Office 478-960-4080 Cell trip@fickling.com		577 Mulberry St, Suite 1100 Macon, GA 31201 478.746.9421 Office https://commercial.fickling.com
----------------	--	--	---	---	--

This information is from resources deemed to be reliable and is subject to change without notice. No warranties or guarantees for accuracy are made by Fickling and Company.

Office Space for Lease
191 Sammons Industrial Parkway
Eatonton, GA 31024



Summary | Area Info | Photos | Aerial | **Site Map**



CONTACT | **Jonathan Schuemann**
478-746-9421 Office
561-676-4633 Cell
jonathan@fickling.com

| **Patty Burns, CCIM, ALC**
478-746-9421 Office
478-951-5100 Cell
patty@fickling.com
www.georgiacommercialrealestate.net

| **Trip Wilhoit, CCIM, ALC**
478-746-9421 Office
478-960-4080 Cell
trip@fickling.com



577 Mulberry St, Suite 1100
Macon, GA 31201
478.746.9421 Office
<https://commercial.fickling.com>

This information is from resources deemed to be reliable and is subject to change without notice. No warranties or guarantees for accuracy are made by Fickling and Company.