

# Lot 6 N. Seminary Ave.

Woodstock, IL 60098

# For Sale

MLS #11676693

LAND



LAND

0.85 ACRE

\$169,500

(\$4.58 PSF)

## Property Description

### Route 47 Frontage Near County Courthouse:

.85 Acre level lot with 98' of frontage on busy Seminary Avenue (Route 47) with 16,400 vehicles per day. Located just south of McHenry County Courthouse.

Multiple uses including retail, restaurant, professional office, medical or mixed use. Zoned B2 General Business District. \$4.58 psf.

16,400 VPD on Route 47.

## Specifications

Description:	Commercial Land
Land Size:	0.85 Acres (37,026 SF)
Topography:	Level/Cleared
Environmental Status:	TBD
Utilities:	To Site
Sewer/Water:	To Site/Nearby
Frontage Dimensions:	98' (Route 47)
Zoning:	B2 (General Business)
Taxes:	\$2,587.58 (2025)
PIN #:	08-32-251-017

Demographics	1 Mile	3 Miles	5 Miles
Total Population	7,821	23,753	35,854
Average HH Income	\$100,755	\$99,965	\$105,765

[CLICK HERE TO VIEW OUR WEBSITE](#)

No warranty or representation is made as to the accuracy of the foregoing information. Terms of sale or lease and availability are subject to change or withdrawal without notice. This document is for information purposes only. No offer of sub-agency is being made.



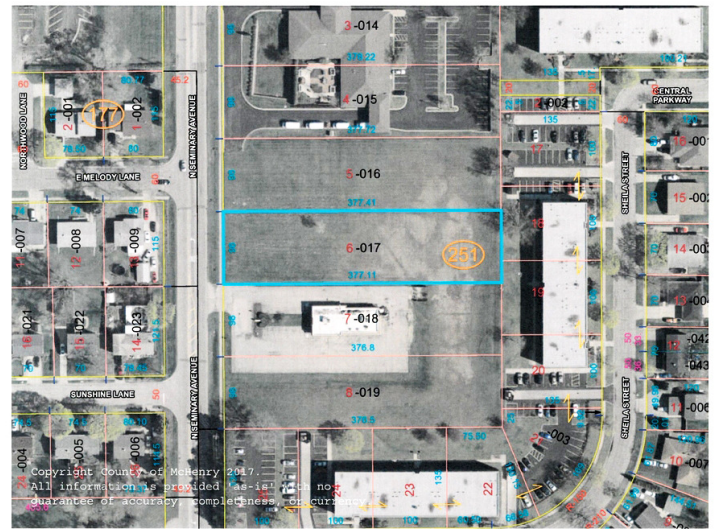
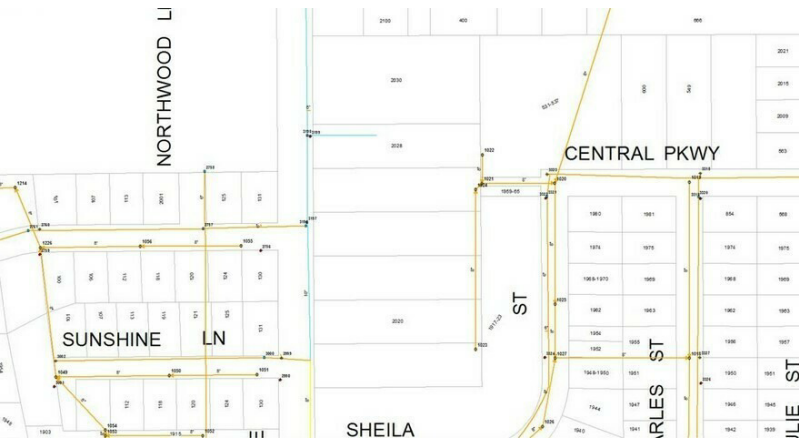
**Heather Schweitzer**  
 President / Designated Managing Broker  
 HeatherS@PremierCommercialRealty.com  
 O: 847.854.2300 x15 C: 815.236.9816

# Lot 6 N. Seminary Ave.

Woodstock, IL 60098

# For Sale

LAND



[CLICK HERE TO VIEW OUR WEBSITE](#)

No warranty or representation is made as to the accuracy of the foregoing information. Terms of sale or lease and availability are subject to change or withdrawal without notice. This document is for information purposes only. No offer of sub-agency is being made.



**Heather Schweitzer**  
 President / Designated Managing Broker  
 HeatherS@PremierCommercialRealty.com  
 O: 847.854.2300 x15 C: 815.236.9816