

For Lease  
±949 SF  
PGA Office Space



## 4400 PGA Boulevard

Palm Beach Gardens, FL 33410

### Property Features

- Excellent access and fantastic amenities in the heart of Palm Beach Gardens
- Great, full-service rates (electric and nightly cleaning included)
- 4-story parking garage with enclosed bridge access
- Attached Embassy Suites hotel with shared, lush and tranquil atrium lobby



**VIEW 3D TOURS!**



Great location with  
direct I-95 access



Abundant surface  
and garage parking



Immediate  
availability



Highly visible  
monument signage  
for full floor tenant



For more information

**Jason L. Sundook, SIOR**

Principal | [jsundook@mhcreal.com](mailto:jsundook@mhcreal.com)

**Patrick Almand**

Associate | [palmand@mhcreal.com](mailto:palmand@mhcreal.com)

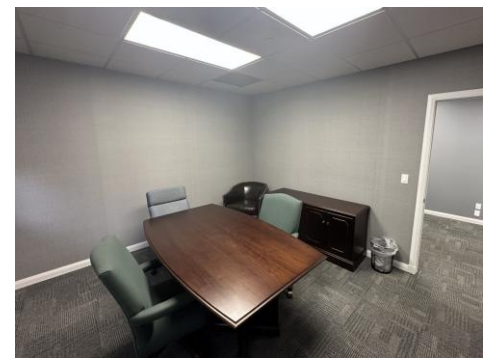
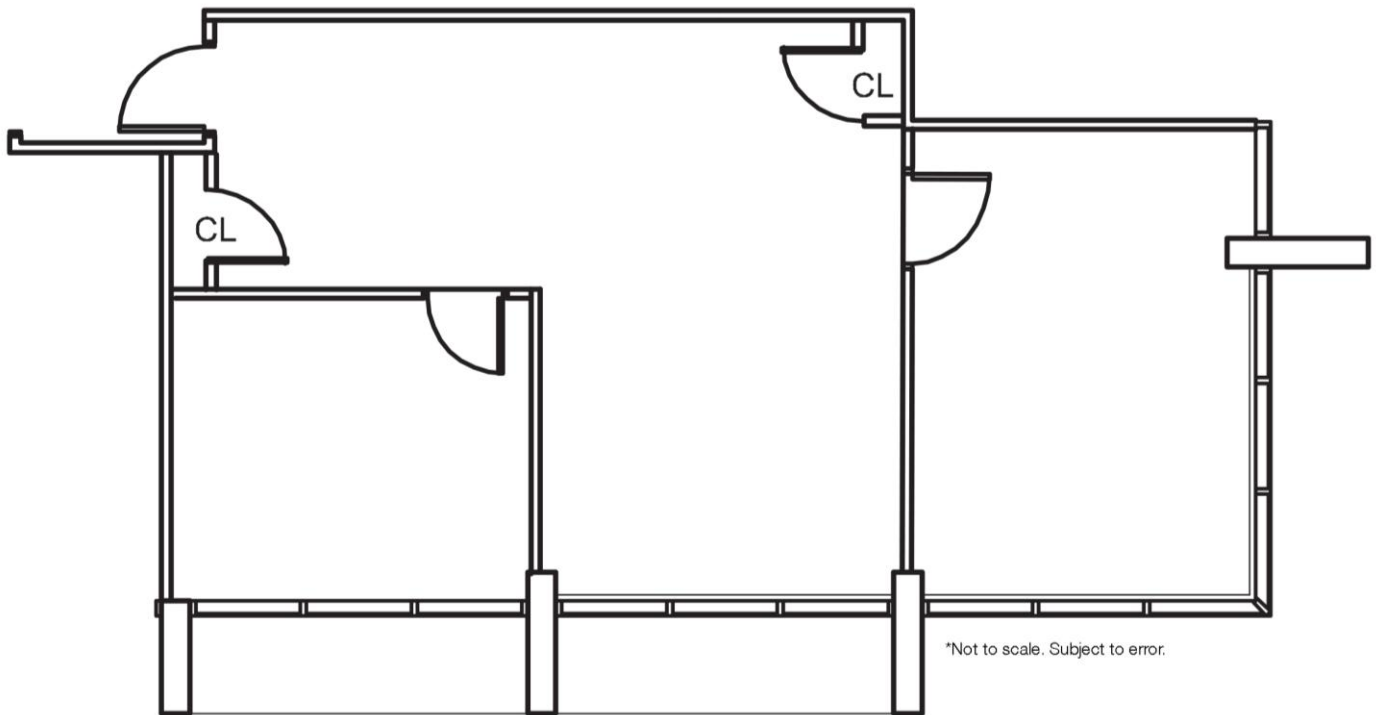


FOR LEASE: 4400 PGA BOULEVARD, PALM BEACH GARDENS

## Third-Floor Office Space Available

Suite 306 949 SF

- Efficient Layout
- 2 Private Offices
- Open Work Area



NO WARRANTY OR REPRESENTATION, EXPRESS OR IMPLIED, IS MADE AS TO THE ACCURACY OF THE INFORMATION CONTAINED HEREIN, AND THE SAME IS SUBMITTED SUBJECT TO ERRORS, OMISSIONS, CHANGE OF PRICE, OR WITHDRAWAL WITHOUT NOTICE.



561 471 8000



1601 Forum Place, Suite 700  
West Palm Beach, FL 33401



[www.4400PgaOfficeSpace.com](http://www.4400PgaOfficeSpace.com)  
[www.mhcreal.com](http://www.mhcreal.com)