

INDUSTRIAL BUILDING FOR LEASE

907 S CHARLES RICHARD BEALL BLVD

DEBARY, FL 32713



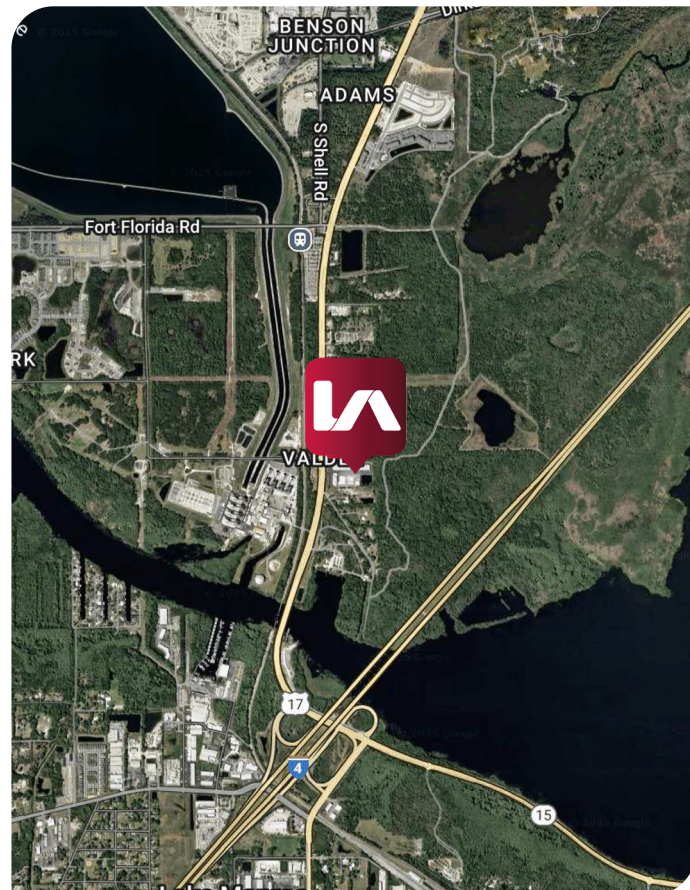
PROPERTY HIGHLIGHTS

AVAILABLE: ±16,200 SF Building

LOCATION: This prime location sits directly on U.S. Highway 17-92 (Charles Richard Beall Blvd), a major north-south thoroughfare that connects DeBary to neighboring cities such as Sanford to the south and Orange City and DeLand to the north. The property benefits from high visibility and convenient access, just minutes from Interstate 4 (I-4) via the nearby Exit 108, providing seamless regional connectivity to Orlando and Daytona Beach.

LEASE RATE: **\$16,200/month NNN**
(\$12.00/SF)

CAM: \$1.65/SF Insurance
\$2.34/SF Taxes
\$0.48/SF Management

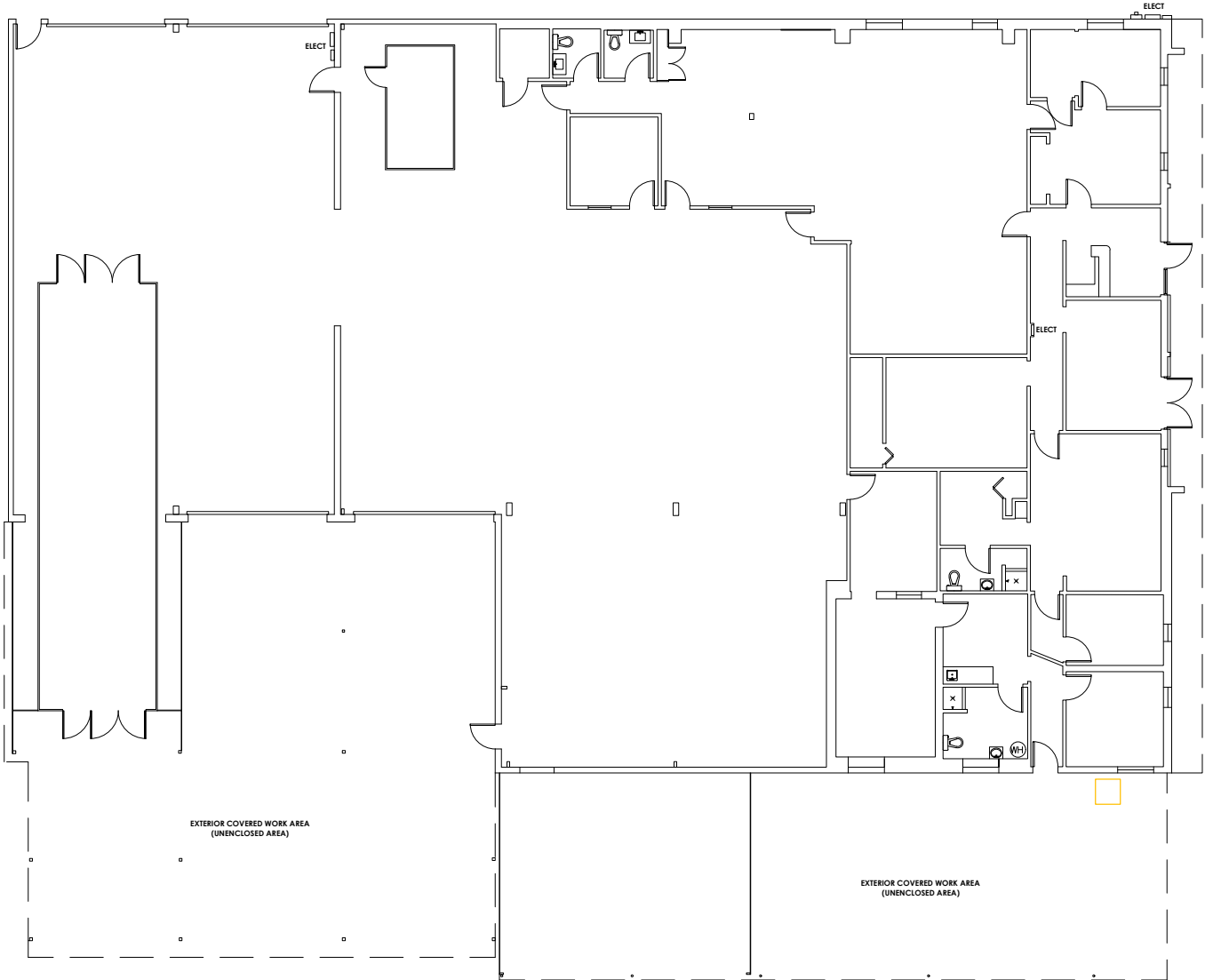


All information furnished regarding property for sale, rental or financing is from sources deemed reliable, but no warranty or representation is made to the accuracy thereof and same is submitted to errors, omissions, change of price, rental or other conditions prior to sale, lease or financing or withdrawal without notice. No liability of any kind is to be imposed on the broker herein.

907 S CHARLES RICHARD BEALL BOULEVARD
DEBARY, FL 32713



BUILDING PLAN | 16,200 SF



Leasing Contact:

Christopher "CJ" Griffith, SIOR
Vice President
cgriffith@lee-associates.com
D 321.281.8508

Ryan Griffith
Senior Vice President/Principal
rgriffith@lee-associates.com
D 321.281.8512

Charles W. Duvall
Senior Associate
cduvall@lee-associates.com
D 321.281.8501

All information furnished regarding property for sale, rental or financing is from sources deemed reliable, but no warranty or representation is made to the accuracy thereof and same is submitted to errors, omissions, change of price, rental or other conditions prior to sale, lease or financing or withdrawal without notice. No liability of any kind is to be imposed on the broker herein.

907 S CHARLES RICHARD BEALL BOULEVARD

DEBARY, FL 32713



Leasing Contact:

Christopher "CJ" Griffith, SIOR
Vice President
cgriffith@lee-associates.com
D 321.281.8508

Ryan Griffith
Senior Vice President/Principal
rgriffith@lee-associates.com
D 321.281.8512

Charles W. Duvall
Senior Associate
cduvall@lee-associates.com
D 321.281.8501

All information furnished regarding property for sale, rental or financing is from sources deemed reliable, but no warranty or representation is made to the accuracy thereof and same is submitted to errors, omissions, change of price, rental or other conditions prior to sale, lease or financing or withdrawal without notice. No liability of any kind is to be imposed on the broker herein.