

FOR LEASE



DOCK-HIGH WAREHOUSE

6325-6373 All American Blvd, Orlando, FL 32810

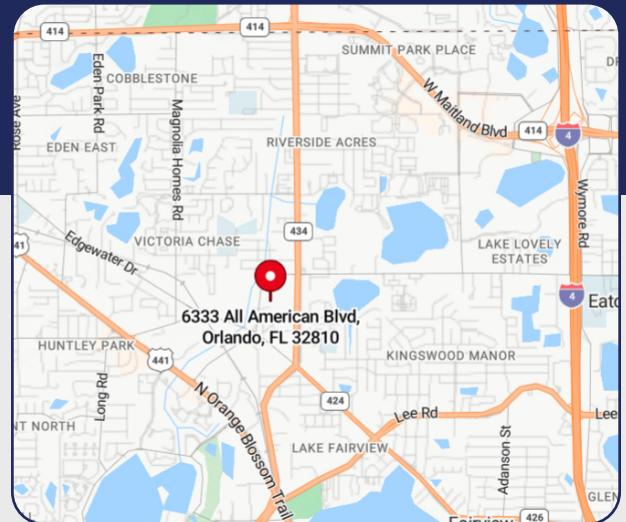
Unit 6339

- > **5,700 SF**
- > 400± SF of office space
- > One 12' x 14' dock-high door
- > **\$7,600.00/month**

Unit 6343

- > **11,400 SF**
- > 400± SF of office space
- > Two 12' x 14' dock-high, roll-up doors, one with ramp
- > Heavy 3-phase power
- > **\$14,500.00/month**

- 20' clear height
- Large truck court
- Ample parking
- Modified Gross lease - base year real estate taxes and property insurance included - tenant pays sales tax, utilities, and trash
- Additional off-site parking and outdoor storage available



Bill Bywater, CCIM

D 407.206.5736

O 407.206.7300

bill@bywater.com



1209 Edgewater Drive

Suite 100

Orlando, FL 32804

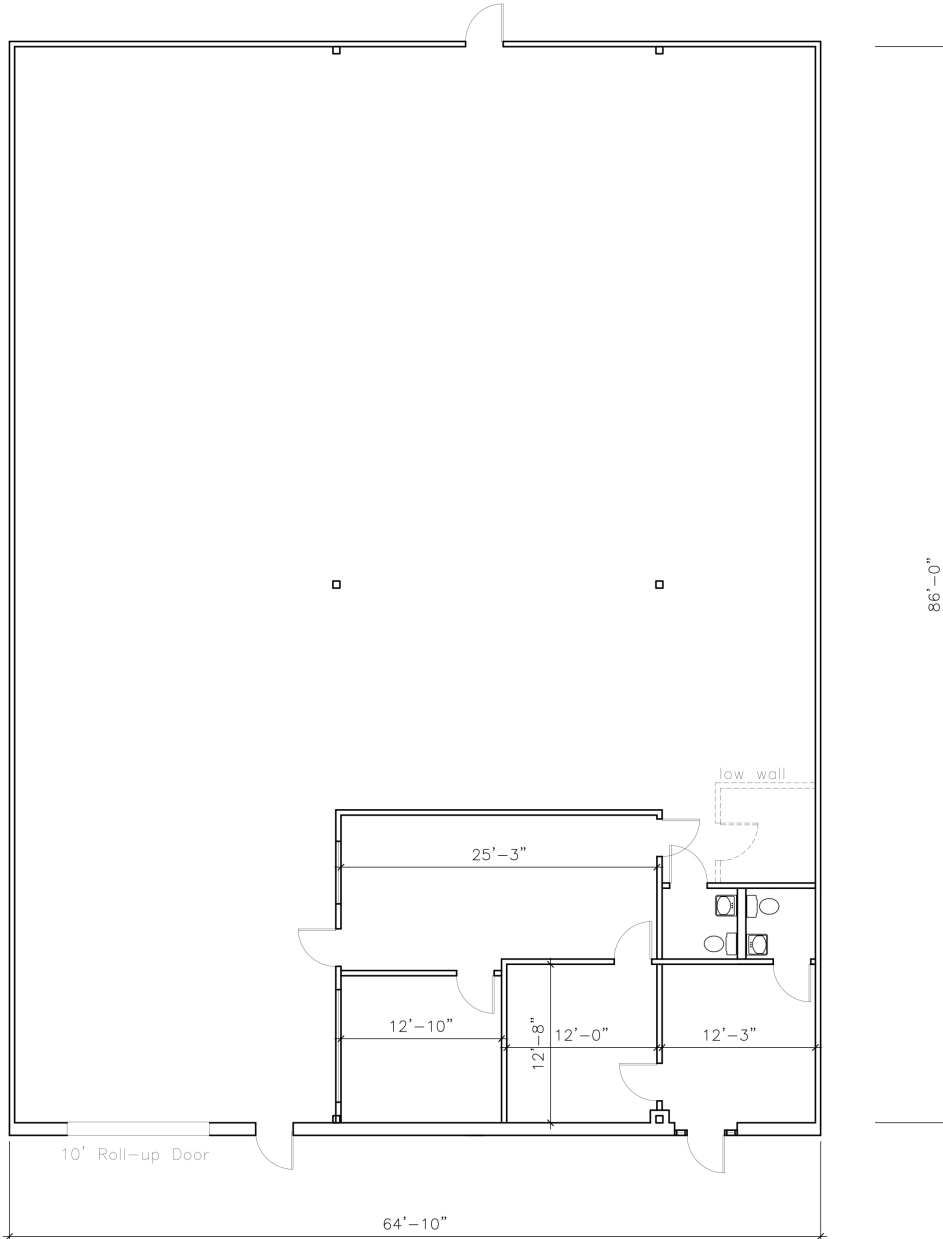
407.206.7300 Main

www.bywater.com

DOCK-HIGH WAREHOUSE

6325-6373 All American Blvd, Orlando, FL 32810

UNIT 6339 - 5,700 SF



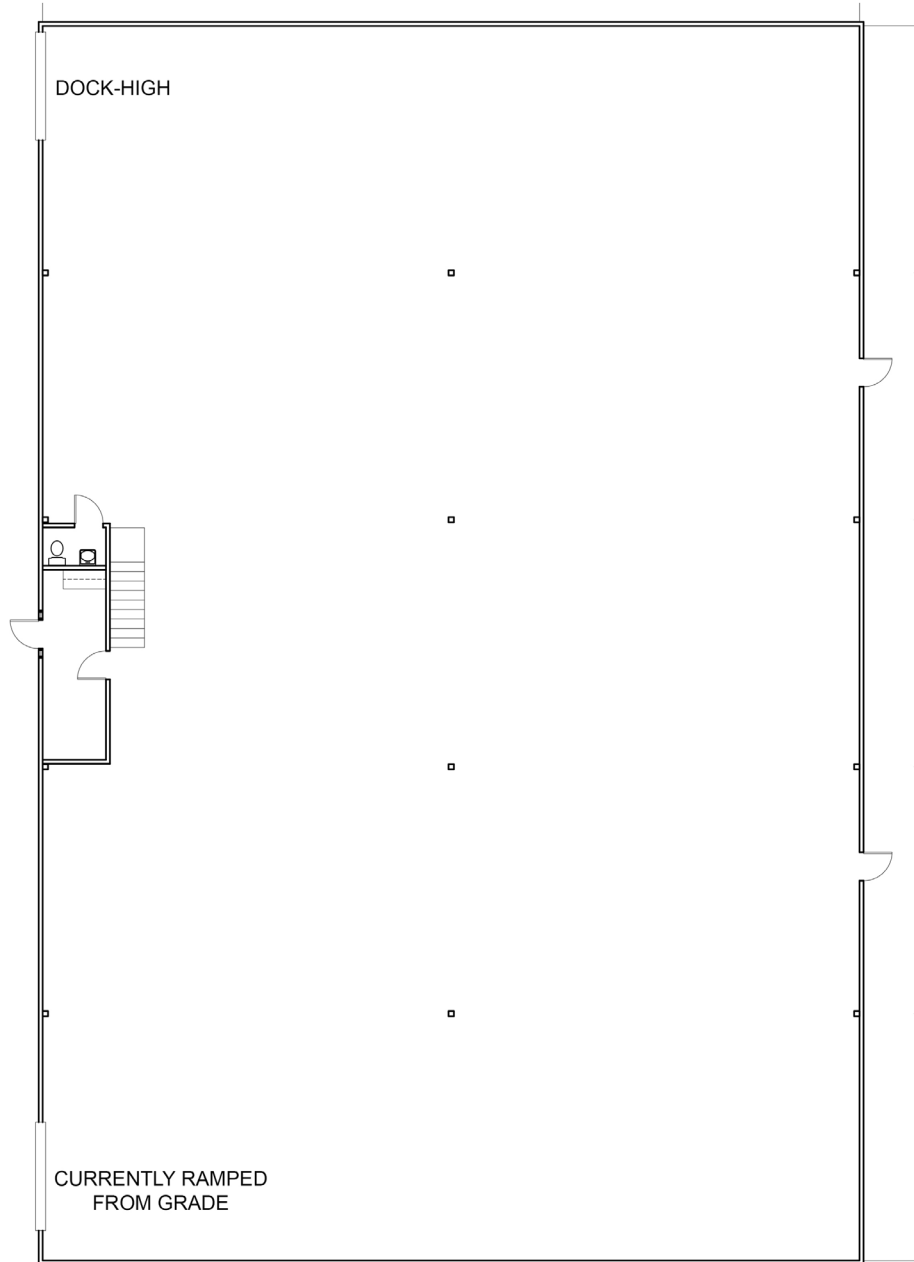
1209 Edgewater Drive, Suite 100 | Orlando, FL 32804 | 407.206.7300 | www.bywater.com

The information contained herein was obtained from sources deemed reliable and is assumed to be correct. It is not guaranteed by The Bywater Company.

DOCK-HIGH WAREHOUSE

6325-6373 All American Blvd, Orlando, FL 32810

UNIT 6343 - 11,400 SF



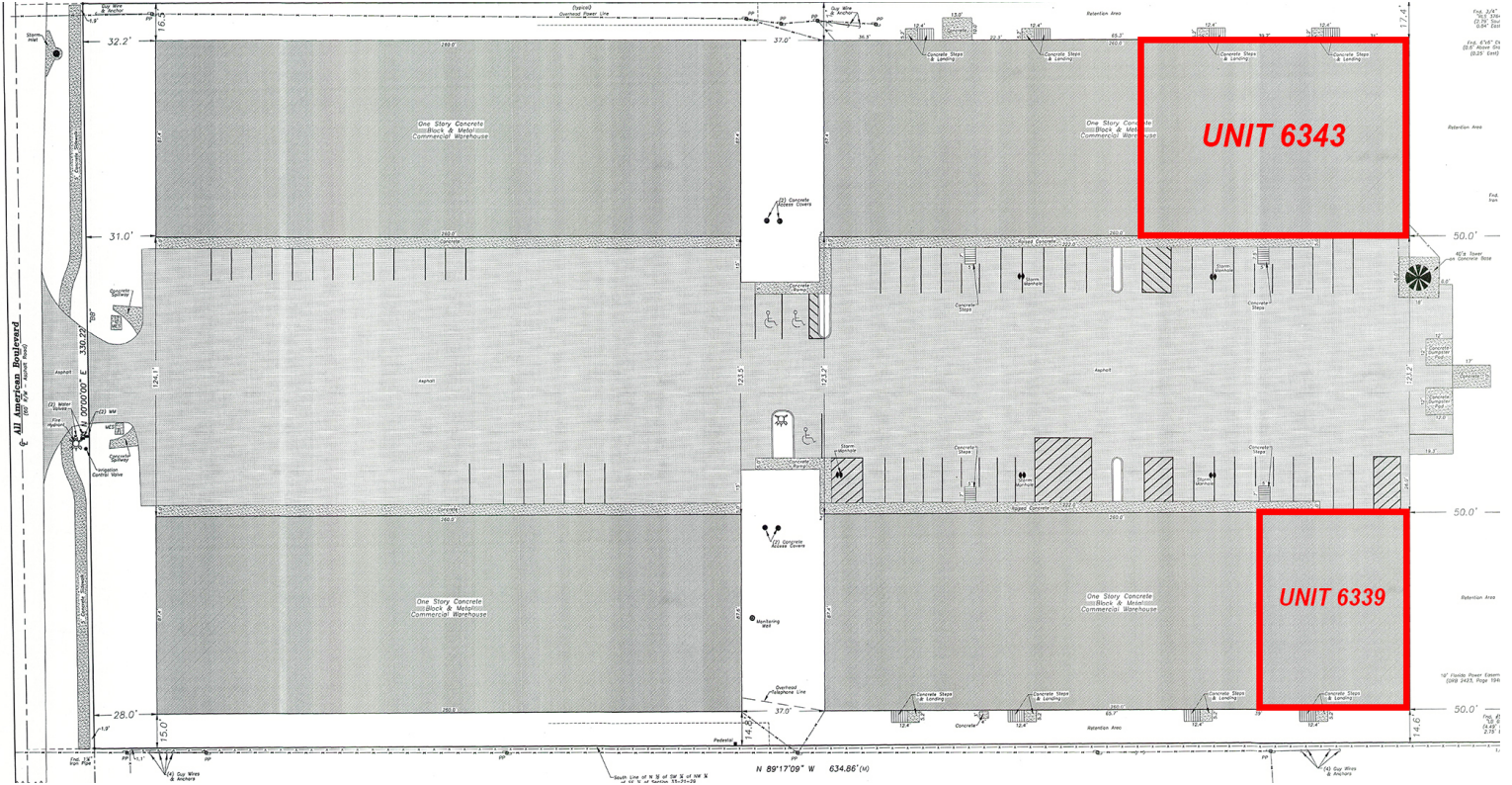
1209 Edgewater Drive, Suite 100 | Orlando, FL 32804 | 407.206.7300 | www.bywater.com

The information contained herein was obtained from sources deemed reliable and is assumed to be correct. It is not guaranteed by The Bywater Company.

DOCK-HIGH WAREHOUSE

6325-6373 All American Blvd, Orlando, FL 32810

SURVEY



1209 Edgewater Drive, Suite 100 | Orlando, FL 32804 | 407.206.7300 | www.bywater.com

The information contained herein was obtained from sources deemed reliable and is assumed to be correct. It is not guaranteed by The Bywater Company.