



# EXECUTIVE OFFICE SUITES FOR LEASE

110 W Indiana Ave, DeLand, FL 32720

Contact: Ben Kuykendall  
 Vice President of Brokerage Services  
 E: Ben@FCPG.com  
 P: 407.872.0177 ext.131

Contact: Dan Van Nada, CCIM  
 Vice President of Brokerage Services  
 E: Dan@FCPG.com  
 P: 407.872.0177 ext.117

## For Lease: 217 RSF - 746 RSF, Modified Gross

Availability:

Suite 202: ± 746 RSF - \$1,700 / Month	Available Immediately
Suite 203: ± 356 RSF - \$850 / Month	Available Immediately
Suite 208: ± 217 RSF - \$575 / Month	Available Immediately

Executive suites located in the Historic Landis Fish Building in the heart of the historic, award-winning Downtown DeLand

Second floor offices available with conference table, breakroom and bathroom shared among the building

Walking distance from Stetson University, Volusia County Courthouse and street-side retail

Rate includes all utilities and operating expenses; tenants can add janitorial service for \$50 / month

Ideal for any professional service users (accounting, attorney, insurance, etc.)

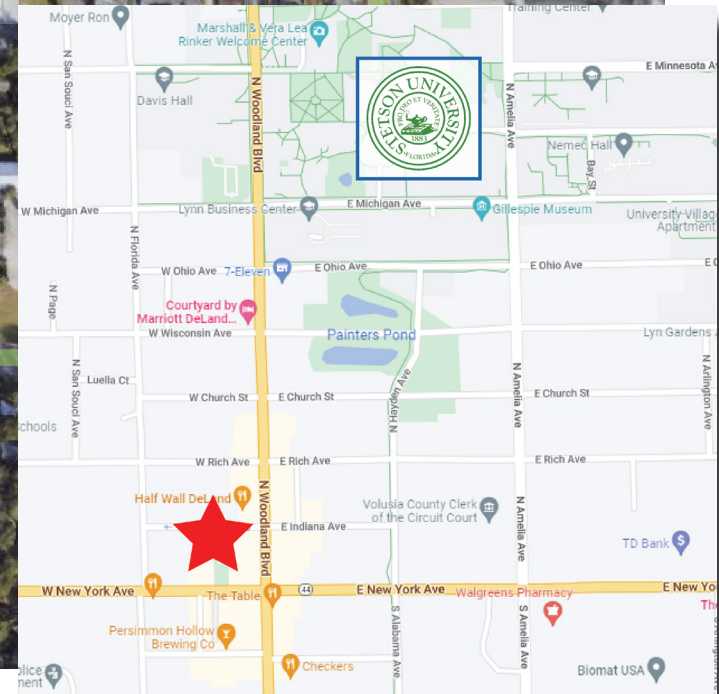
## DEMOGRAPHICS

	2025	1 Mile	3 Miles	5 Miles
Total Population		11,843	49,397	83,349
Average HH Income		\$71,538	\$89,726	\$99,340
Total Households		4,323	19,344	33,461

615 E. Colonial Dr., Orlando, FL 32803 Phone: 407.872.0209 www.FCPG.com

Information furnished regarding the subject property is believed to be accurate, but no guarantee or representation is made. References to square footage are approximate. This offering is subject to errors, omissions, prior sale or lease or withdrawal without notice. ©2026 First Capital Property Group, Licensed Real Estate Brokers & Managers.

# NEIGHBORHOOD

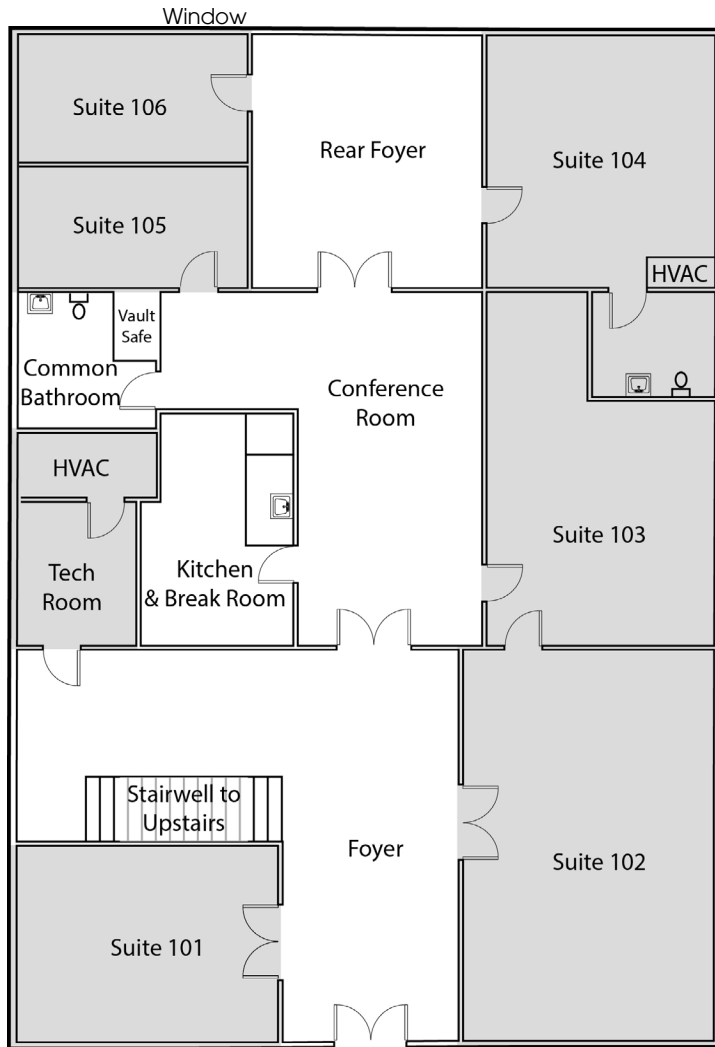


615 E. Colonial Dr., Orlando, FL 32803 Phone: 407.872.0209 www.FCPG.com

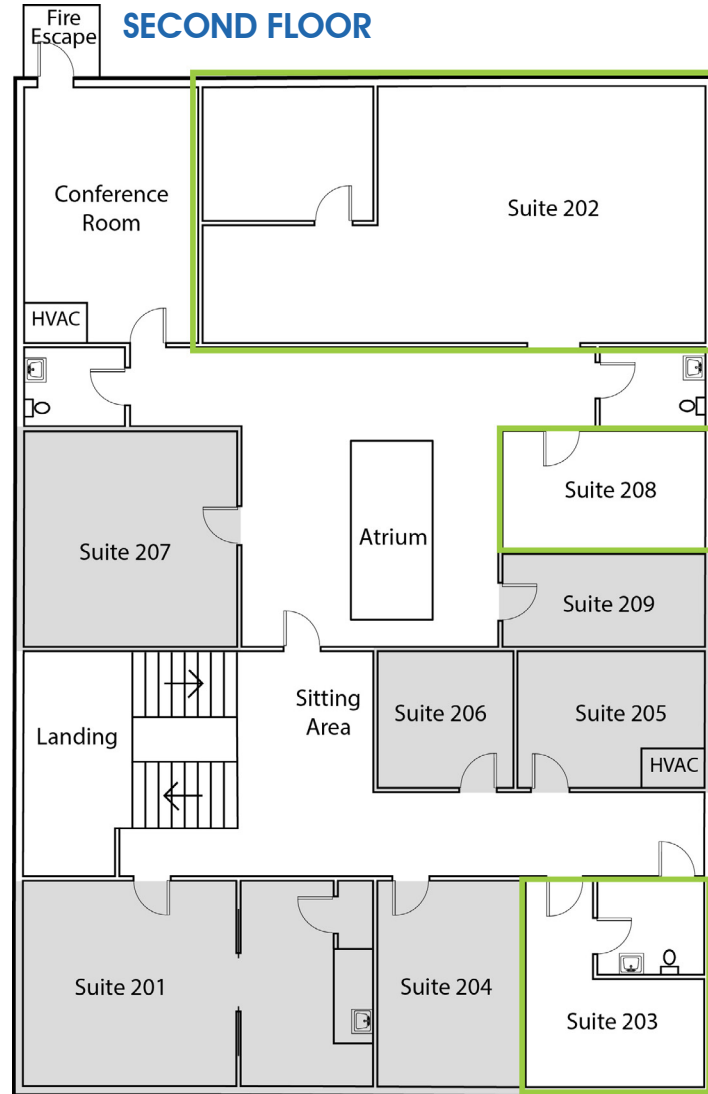
Information furnished regarding the subject property is believed to be accurate, but no guarantee or representation is made. References to square footage are approximate. This offering is subject to errors, omissions, prior sale or lease or withdrawal without notice. ©2026 First Capital Property Group, Licensed Real Estate Brokers & Managers.

# FLOORPLANS

## FIRST FLOOR



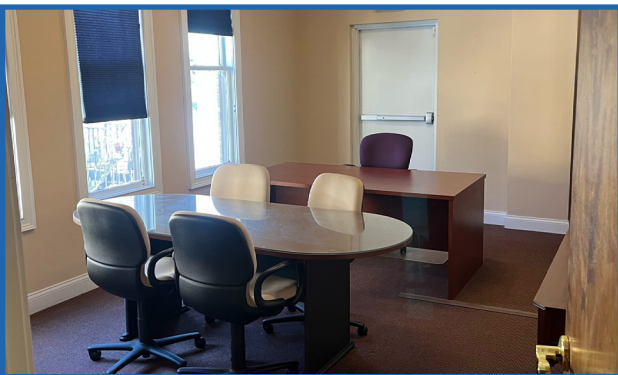
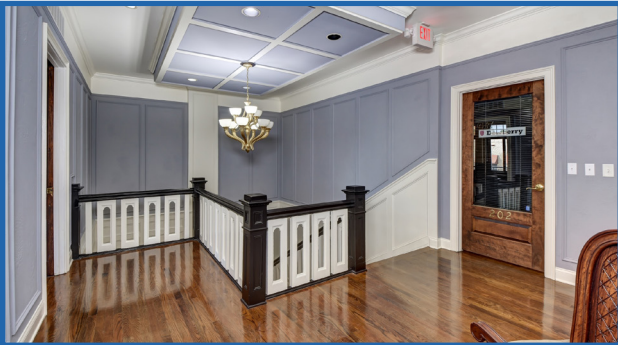
## SECOND FLOOR



■ 615 E. Colonial Dr., Orlando, FL 32803 ■ Phone: 407.872.0209 ■ [www.FCPG.com](http://www.FCPG.com) ■

Information furnished regarding the subject property is believed to be accurate, but no guarantee or representation is made. References to square footage are approximate. This offering is subject to errors, omissions, prior sale or lease or withdrawal without notice. ©2026 First Capital Property Group, Licensed Real Estate Brokers & Managers.

# PHOTOS



■ 615 E. Colonial Dr., Orlando, FL 32803 ■ Phone: 407.872.0209 ■ [www.FCPG.com](http://www.FCPG.com) ■

Information furnished regarding the subject property is believed to be accurate, but no guarantee or representation is made. References to square footage are approximate. This offering is subject to errors, omissions, prior sale or lease or withdrawal without notice. ©2026 First Capital Property Group, Licensed Real Estate Brokers & Managers.