

VENETIAN BAY COMMERCIAL CONDO FOR SALE



PROPERTY DESCRIPTION

Commercial Condo For Sale with storefront on busy Luna Bella Lane.

Rare opportunity to purchase a condo unit with direct exposure to Lune Bella Lane.

Unit B (Suite 133) is 2,989 SF total.

2,250 SF is vacant and available for owner to occupy or to lease.

739 SF is leased by Snap Fitness through April 2033. \$17,456.76 Current Annual Base Rent, 4% annual increases, PLUS Tenant pays condo dues and real estate taxes.

Venetian Bay boasts some of the best demographics in East Volusia County.

The Downtown Venetian Bay Town Center has approximately 2,000 homes within walking distance and over 2,900 homes currently, with plans to grow to more than 4,000 at full build-out. Additionally, 322 new apartments have recently opened across the street.

The area now offers access to over 7,000 potential customers, with an average household income exceeding \$100,000.

No hassle investment with Condo Association handling all building and grounds maintenance.

Building signage available.

Cash-in on local growth today!

JOHN W. TROST, CCIM

Principal | Senior Advisor

O: 386.301.4581 | C: 386.295.5723

john.trost@svn.com

CHRIS BUTERA

Principal

O: 386.453.4789

chris.butera@svn.com

OFFERING SUMMARY

SALE PRICE: \$650,000

SIZE: 2,989 SF TOTAL
(2,250 SF Vacant)
(739 SF Leased)

NOI: From 739 SF Leased
\$17,456.76
(\$23.62 NNN)

YEAR BUILT: 2007

ZONING: PUD

PARCEL NO: 7307-04-00-0020

LOCATION ADDRESS

424 Luna Bella Lane, Unit B (Suite 133)

New Smyrna Beach, FL 32168

VENETIAN BAY COMMERCIAL CONDO | 424 Luna Bella Lane, Unit B (Suite 133) New Smyrna Beach, FL 32168

We obtained the information above from sources we believe to be reliable. However, we have not verified its accuracy and make no guarantee, warranty or representation about it. It is submitted subject to the possibility of errors, omissions, change of price, rental or other conditions, prior sale, lease or financing, or withdrawal without notice. We include projections, opinions, assumptions or estimates for example only, and they may not represent current or future performance of the property. You and your tax and legal advisors should conduct your own investigation of the property and transaction. All SVN offices are independently owned and operated.



ADDITIONAL PHOTOS



JOHN W. TROST, CCIM
Principal | Senior Advisor
O: 386.301.4581 | C: 386.295.5723
john.trost@svn.com

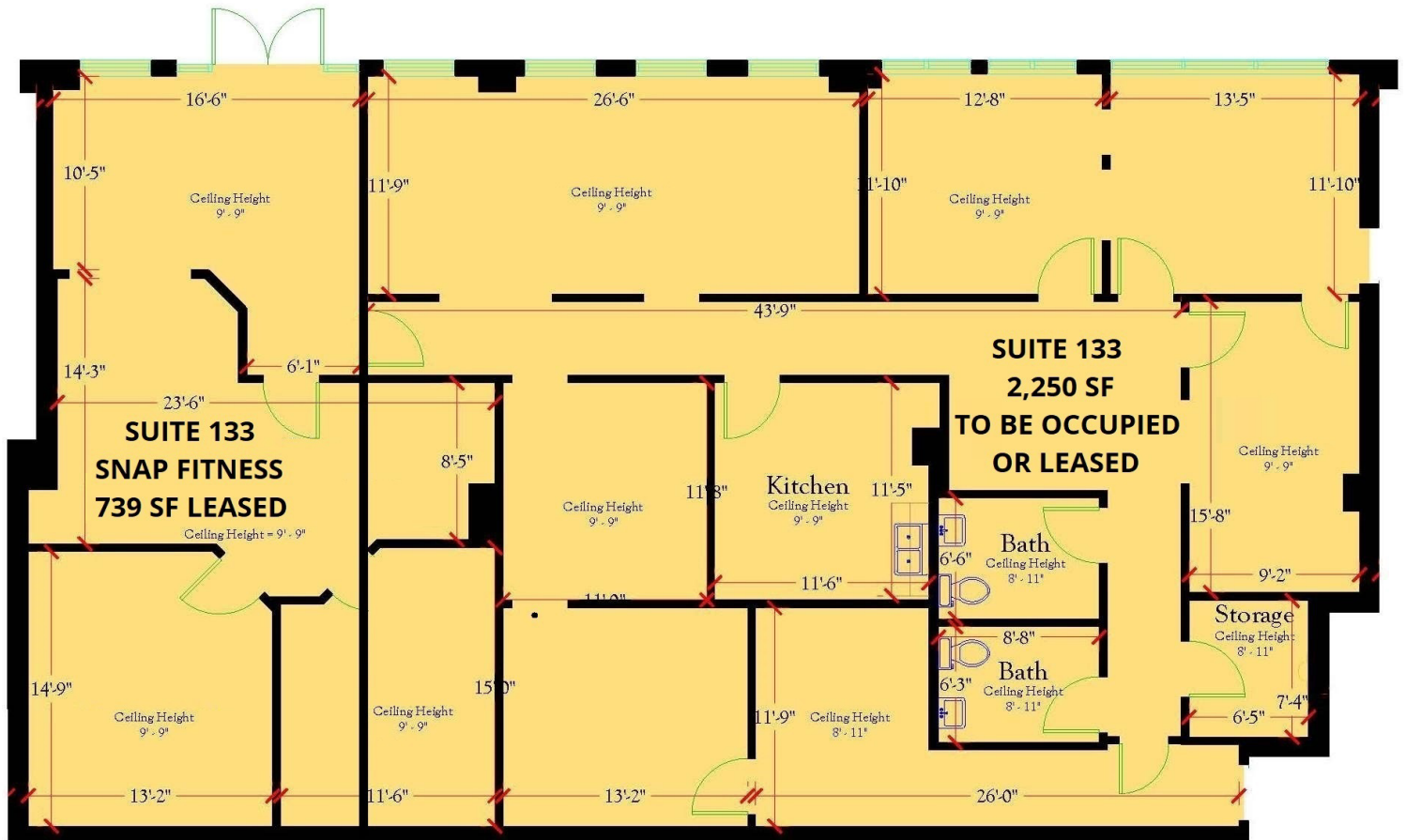
CHRIS BUTERA
Principal
O: 386.453.4789
chris.butera@svn.com

VENETIAN BAY COMMERCIAL CONDO | 424 Luna Bella Lane, Unit B (Suite 133) New Smyrna Beach, FL 32168

We obtained the information above from sources we believe to be reliable. However, we have not verified its accuracy and make no guarantee, warranty or representation about it. It is submitted subject to the possibility of errors, omissions, change of price, rental or other conditions, prior sale, lease or financing, or withdrawal without notice. We include projections, opinions, assumptions or estimates for example only, and they may not represent current or future performance of the property. You and your tax and legal advisors should conduct your own investigation of the property and transaction. All SVN offices are independently owned and operated.



UNIT B (133) FLOOR PLAN - 2,250 SF VACANT



JOHN W. TROST, CCIM
Principal | Senior Advisor
O: 386.301.4581 | C: 386.295.5723
john.trost@svn.com

CHRIS BUTERA
Principal
O: 386.453.4789
chris.butera@svn.com

VENETIAN BAY COMMERCIAL CONDO | 424 Luna Bella Lane, Unit B (Suite 133) New Smyrna Beach, FL 32168



We obtained the information above from sources we believe to be reliable. However, we have not verified its accuracy and make no guarantee, warranty or representation about it. It is submitted subject to the possibility of errors, omissions, change of price, rental or other conditions, prior sale, lease or financing, or withdrawal without notice. We include projections, opinions, assumptions or estimates for example only, and they may not represent current or future performance of the property. You and your tax and legal advisors should conduct your own investigation of the property and transaction. All SVN offices are independently owned and operated.

AERIAL



NOW OPEN
Cordova Luxury Apartments
322 Market Rate Units

Google

Map data ©2026 Imagery ©2026 Airbus,
Maxar Technologies

JOHN W. TROST, CCIM

Principal | Senior Advisor

O: 386.301.4581 | C: 386.295.5723

john.trost@svn.com

CHRIS BUTERA

Principal

O: 386.453.4789

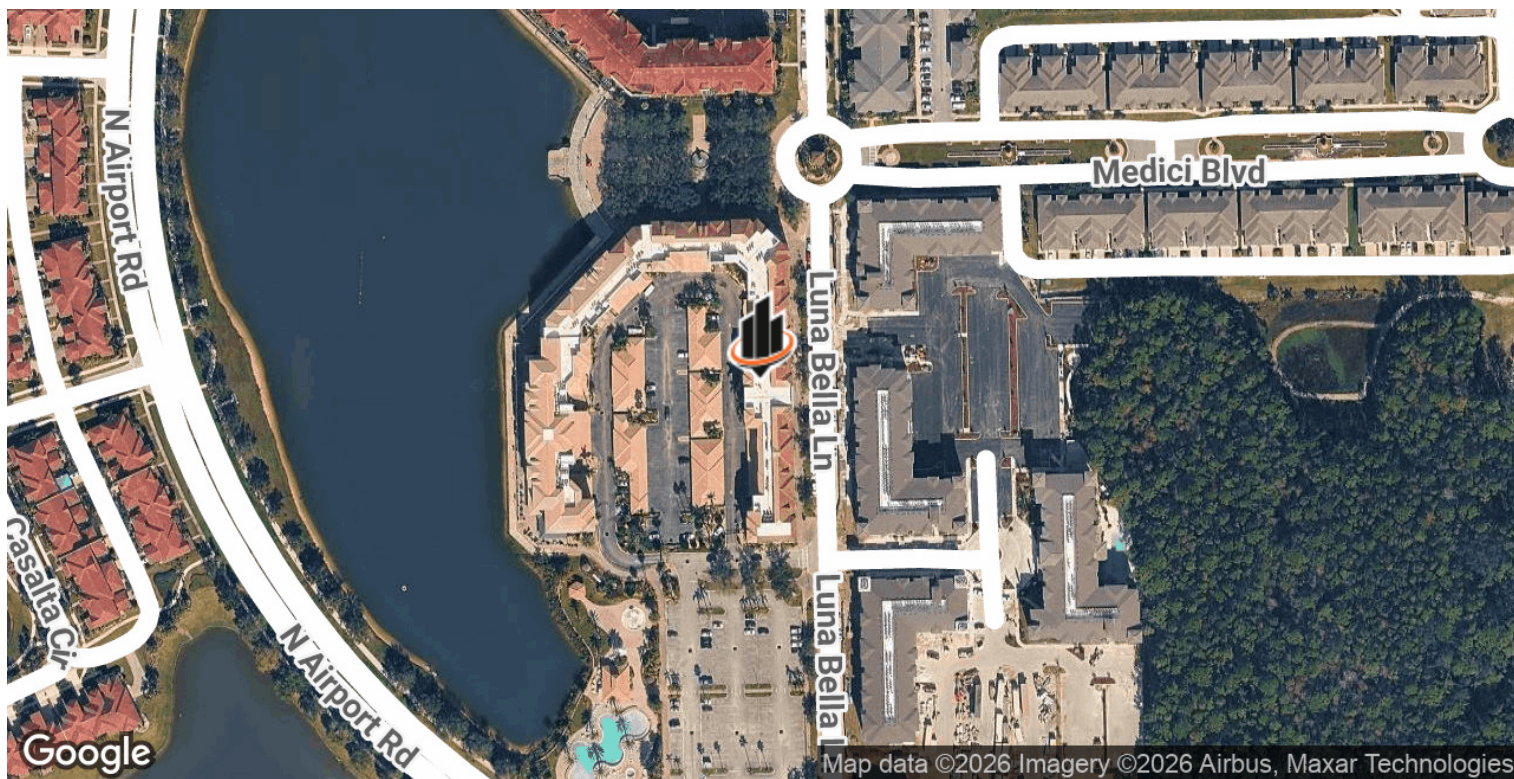
chris.butera@svn.com

VENETIAN BAY COMMERCIAL CONDO | 424 Luna Bella Lane, Unit B (Suite 133) New Smyrna Beach, FL 32168



We obtained the information above from sources we believe to be reliable. However, we have not verified its accuracy and make no guarantee, warranty or representation about it. It is submitted subject to the possibility of errors, omissions, change of price, rental or other conditions, prior sale, lease or financing, or withdrawal without notice. We include projections, opinions, assumptions or estimates for example only, and they may not represent current or future performance of the property. You and your tax and legal advisors should conduct your own investigation of the property and transaction. All SVN offices are independently owned and operated.

LOCATION MAPS



JOHN W. TROST, CCIM

Principal | Senior Advisor

O: 386.301.4581 | C: 386.295.5723

john.trost@svn.com

CHRIS BUTERA

Principal

O: 386.453.4789

chris.butera@svn.com

VENETIAN BAY COMMERCIAL CONDO | 424 Luna Bella Lane, Unit B (Suite 133) New Smyrna Beach, FL 32168

We obtained the information above from sources we believe to be reliable. However, we have not verified its accuracy and make no guarantee, warranty or representation about it. It is submitted subject to the possibility of errors, omissions, change of price, rental or other conditions, prior sale, lease or financing, or withdrawal without notice. We include projections, opinions, assumptions or estimates for example only, and they may not represent current or future performance of the property. You and your tax and legal advisors should conduct your own investigation of the property and transaction. All SVN offices are independently owned and operated.

