

Former Prisons For Sale (SOLD SEPARATELY)

Located in Renaissance Park (Formerly Central State Hospital Campus)
Milledgeville, GA 31061



Summary

Area Info

Photos

Surveys

Aerial

Site Map



RIVERS STATE PRISON PRICE: \$349,000
CALL AGENT FOR SCOTT STATE PRISON PRICING INFORMATION

CONTACT

Patty Burns, CCIM, ALC
478-746-9421 Office
478-951-5100 Cell
patty@fickling.com

Trip Wilhoit, CCIM, ALC
478-746-9421 Office
478-960-4080 Cell
trip@fickling.com

Jonathan Schuemann
478-746-9421 Office
561-676-4633 Cell
jonathan@fickling.com



577 Mulberry St, Suite 1100
Macon, GA 31201
478.746.9421 Office
<https://commercial.fickling.com>

Former Prisons For Sale (SOLD SEPARATELY)

Located in Renaissance Park (Formerly Central State Hospital Campus)
Milledgeville, GA 31061



Summary

Area Info

Photos

Surveys

Aerial

Site Map

Rivers Prison

Rivers Prison complex consists of three main buildings. One building is 4 floors, the remaining two are 3 floors. Total square footage across all three buildings is 212,300 SF. All utilities available to all buildings. The Dental Clinic and Gym are sold separate.

Scott State Prison (Can be divided & Buildings Sold Separately)

Scott State Prison complex consists of three buildings. The Kemper building is 59,436 SF over 2 floors, the Ingram building is 96,360 SF over 3 floors, and the Holly building is 147,896 SF over 3 floors. All utilities available to all buildings. (Can be divided & Buildings Sold Separately)



CONTACT

Patty Burns, CCIM, ALC
478-746-9421 Office
478-951-5100 Cell
patty@fickling.com

Trip Wilhoit, CCIM, ALC
478-746-9421 Office
478-960-4080 Cell
trip@fickling.com

Jonathan Schuemann
478-746-9421 Office
561-676-4633 Cell
jonathan@fickling.com



577 Mulberry St, Suite 1100
Macon, GA 31201
478.746.9421 Office
<https://commercial.fickling.com>

Former Prisons For Sale (SOLD SEPARATELY)

Located in Renaissance Park (Formerly Central State Hospital Campus)
Milledgeville, GA 31061



Summary

Area Info

Photos

Surveys

Aerial

Site Map

RIVERS STATE PRISON



CONTACT

Patty Burns, CCIM, ALC
478-746-9421 Office
478-951-5100 Cell
patty@fickling.com

Trip Wilhoit, CCIM, ALC
478-746-9421 Office
478-960-4080 Cell
trip@fickling.com

Jonathan Schuemann
478-746-9421 Office
561-676-4633 Cell
jonathan@fickling.com



577 Mulberry St, Suite 1100
Macon, GA 31201
478.746.9421 Office
<https://commercial.fickling.com>

Former Prisons For Sale (SOLD SEPARATELY)

Located in Renaissance Park (Formerly Central State Hospital Campus)
Milledgeville, GA 31061



Summary

Area Info

Photos

Surveys

Aerial

Site Map

SCOTT STATE PRISON (Can be divided & Buildings Sold Separately)



CONTACT

Patty Burns, CCIM, ALC
478-746-9421 Office
478-951-5100 Cell
patty@fickling.com

Trip Wilhoit, CCIM, ALC
478-746-9421 Office
478-960-4080 Cell
trip@fickling.com

Jonathan Schuemann
478-746-9421 Office
561-676-4633 Cell
jonathan@fickling.com



577 Mulberry St, Suite 1100
Macon, GA 31201
478.746.9421 Office
<https://commercial.fickling.com>

Former Prisons For Sale (SOLD SEPARATELY)

Located in Renaissance Park (Formerly Central State Hospital Campus)
Milledgeville, GA 31061



Summary

Area Info

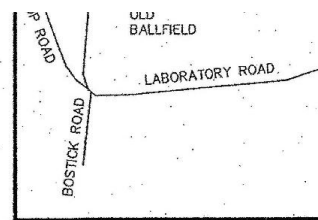
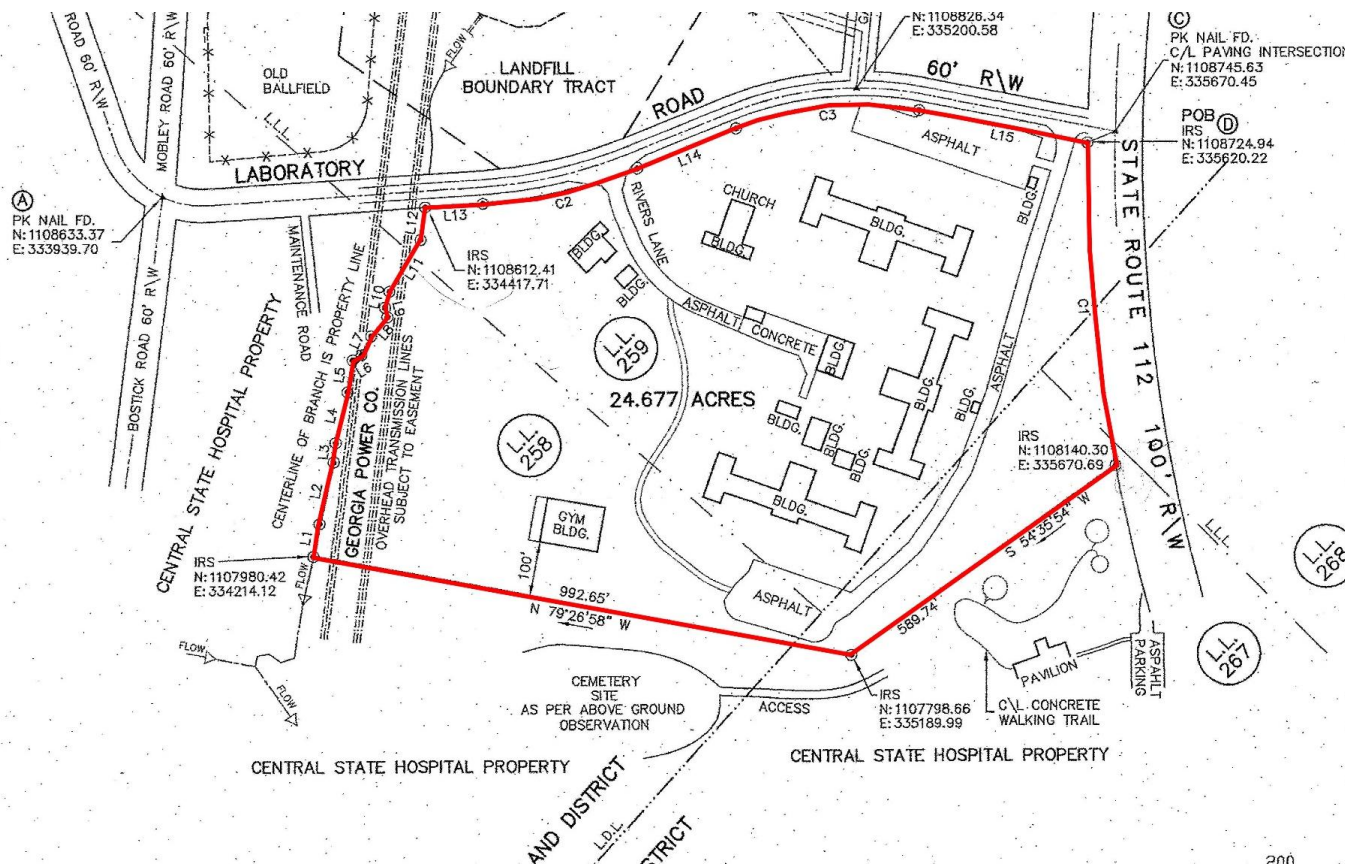
Photos

Surveys

Aerial

Site Map

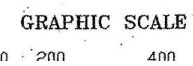
RIVERS STATE PRISON



SURVEY

I hereby certify to all parties otherwise stated hereinafter as the Land surveyed and plotted hereon, and is in compliance with (1) (2) OCCA §§ 15-5-57 - 59 (3) all applicable local, county, specifications; (C) Shows that 44-4-20 - 31 as amended the Coordinate System of 1985, E of at least two permanent monuments Survey Feet, and also shows within 500 feet of any point of reference shown thereon; (D) North, Georgia Coordinate System corners have been established monuments which have been (F) Labels hereon a point of boundary; (G) Shows hereon in symbols used; (H) Shows hereon this plot; (I) is eligible for recording Clerk of Superior Court of any partially lies; and (J) incorporates that certain survey agreement and GA. DEPT. OF CORRECTIONS area map indicating the location Dated the 5th, day of, MAY

J.B. Faircloth
6974@bellsouth.net
229-273-1282 ext. 13
229-273-2340
GEORGIA REGISTERED LAND



CONTACT

Patty Burns, CCIM, ALC
478-746-9421 Office
478-951-5100 Cell
patty@fickling.com

Trip Wilhoit, CCIM, ALC
478-746-9421 Office
478-960-4080 Cell
trip@fickling.com

Jonathan Schuemann
478-746-9421 Office
561-676-4633 Cell
jonathan@fickling.com



577 Mulberry St, Suite 1100
Macon, GA 31201
478.746.9421 Office
https://commercial.fickling.com

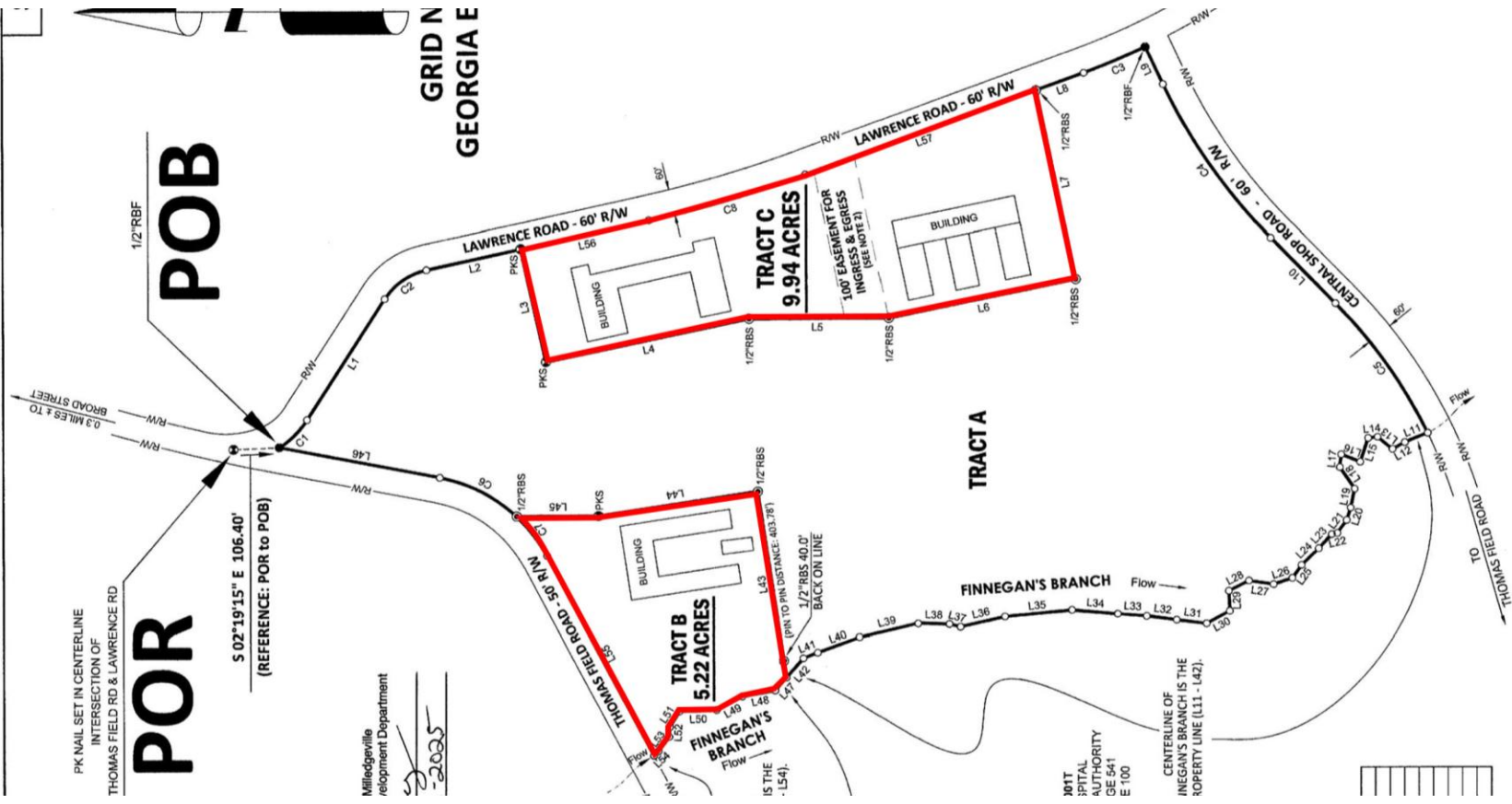
Former Prisons For Sale (SOLD SEPARATELY)

Located in Renaissance Park (Formerly Central State Hospital Campus)
Milledgeville, GA 31061



- Summary
- Area Info
- Photos
- Surveys
- Aerial
- Site Map

SCOTT STATE PRISON



DISCU	<p>THERE HAS BEEN NO IN SEARCH FOR EASEMEN RBS (UNLESS OTHERWISE NOTED) CONCRETE WITH NUMBER FOUND SUBJECT TO ANY AND / UTILITY EASEMENTS TH PLAT NO. 005 THE SL AFFECT THIS PROPERTY</p>
	<p>LEGEND</p> <p>○ COMPUTED POINT ● REF (UNLESS OTHERWISE NOTED) ● CONCRETE WITH NUMBER FOUND ● FIRE HYDRANT ● OTTY: OPEN TOP PIPE FOUND ● BSL: BUILDING SET BACK LINE ● PBL: POINT OF BEGINNING ● FENCE LINE ● OVERHEAD POWER LINE — BF — BF ● REFERENCE LINE AND LLL LAND LOT LINE ● RBS REBAS SET / P/R RIGHT-OF-WAY ● C/L CENTERLINE / P/P POWER POLE ● P/L PROPERTY LINE / P/S PK MAIL SET</p>
SCAL	<p>0 100 200</p>
	<p>JOB N I</p>
IC	<p>MAP 072, PARCEL 001 DIVISION SURVEY PREPARED FOR T.S. Smith Development Company LYING IN LAND LOT 258 151 LAND DISTRICT 32141 GMD CITY OF MILLEDGEVILLE BALDWIN COUNTY, GEORGIA</p>
	<p>REFERENCES DEED BOOK 1504, PAGE 447 PLAT BOOK 42, PAGE 100</p>
<p>GEORGIA SURVEY DATA A. SURVEY DATE: JANUARY & FEBRUARY 2025 B. PLAT DATE: FEBRUARY 22, 2025 C. RECEIVER: CARLSON BRX7 BASE, DUAL FREQUENCY & RTK</p>	
<p>SURVEY CLOSURE INFORMATION THE FIELD DATA UPON WHICH THIS SURVEY IS BASED HAS A POSITIONAL TOLERANCE OF 0.04 FEET. THIS MAP OR PLAT HAS BEEN REPRODUCED TO BE ACCURATE WITHIN ONE FOOT IN 120.140 FEET.</p>	
<p>GENERAL NOTES 1. LAND LOTS ARE APPROXIMATE 2. 100' EASEMENT IS FOR 24 MONTHS AFTER CLOSING DATE.</p>	

CONTACT

Patty Burns, CCIM, ALC
478-746-9421 Office
478-951-5100 Cell
patty@fickling.com

Trip Wilhoit, CCIM, ALC
478-746-9421 Office
478-960-4080 Cell
trip@fickling.com

Jonathan Schuemann
478-746-9421 Office
561-676-4633 Cell
jonathan@fickling.com



577 Mulberry St, Suite 1100
Macon, GA 31201
478.746.9421 Office
<https://commercial.fickling.com>

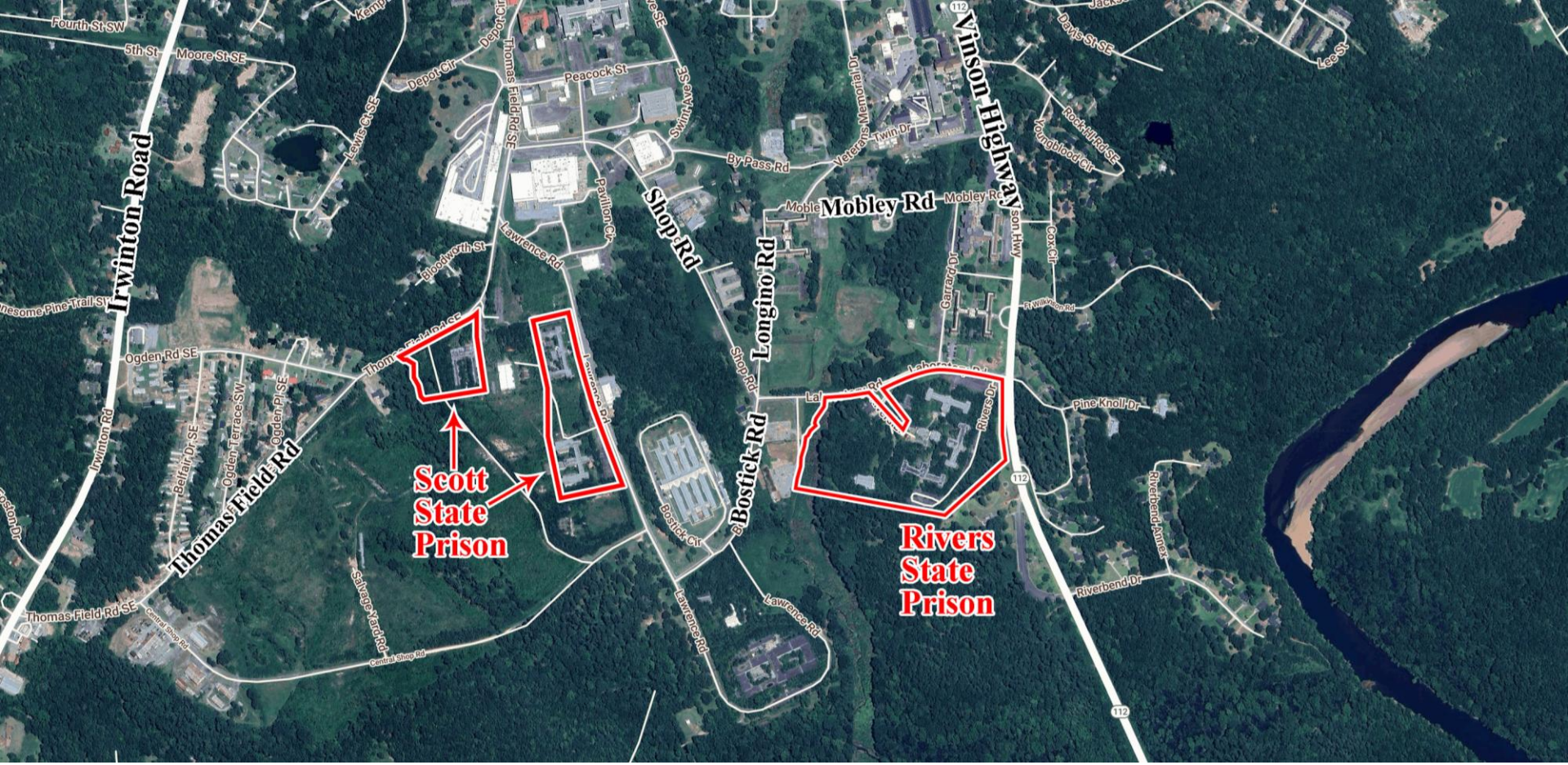
This information is from resources deemed to be reliable and is subject to change without notice. No warranties or guarantees for accuracy are made by Fickling and Company.

Former Prisons For Sale (SOLD SEPARATELY)

Located in Renaissance Park (Formerly Central State Hospital Campus)
Milledgeville, GA 31061



- Summary
- Area Info
- Photos
- Surveys
- Aerial
- Site Map



CONTACT

Patty Burns, CCIM, ALC
478-746-9421 Office
478-951-5100 Cell
patty@fickling.com

Trip Wilhoit, CCIM, ALC
478-746-9421 Office
478-960-4080 Cell
trip@fickling.com

Jonathan Schuemann
478-746-9421 Office
561-676-4633 Cell
jonathan@fickling.com



577 Mulberry St, Suite 1100
Macon, GA 31201
478.746.9421 Office
<https://commercial.fickling.com>

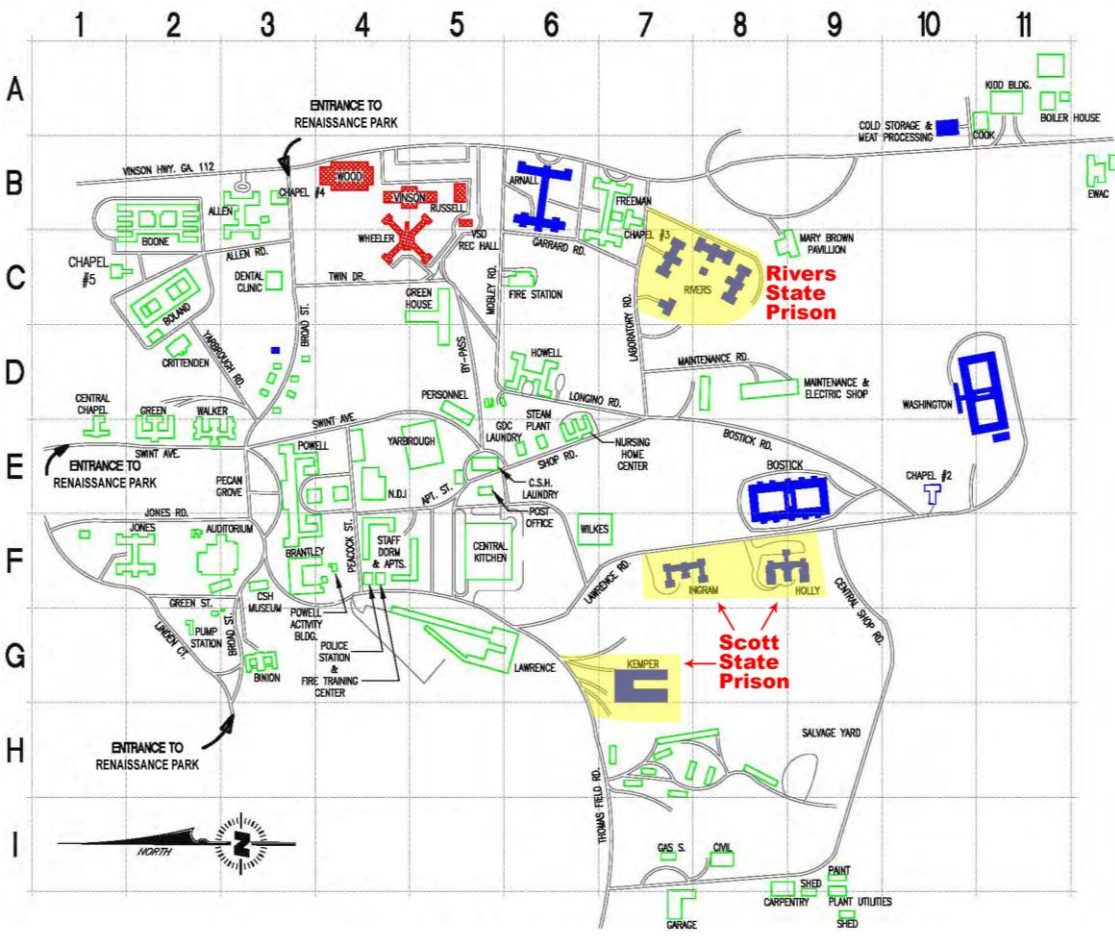
This information is from resources deemed to be reliable and is subject to change without notice. No warranties or guarantees for accuracy are made by Fickling and Company.

Former Prisons For Sale (SOLD SEPARATELY)

Located in Renaissance Park (Formerly Central State Hospital Campus)
Milledgeville, GA 31061



Summary	Area Info	Photos	Surveys	Aerial	Site Map
---------	-----------	--------	---------	--------	----------



LEGEND:

ALLEN	B-3		GA DEPT OF CORRECTIONS (GDC)
ARNALL	B-6		GA DEPT OF VETERANS SERVICES
AUDITORIUM	F-2		RENAISSANCE PARK
BINON	G-3		
BOLAND	C-2		
BOONE	B-2		
BOSTIC	E-8		
BRANTLEY	F-3		
CENTRAL KITCHEN	F-5		
CENTRAL CHAPEL	E-1		
CHAPEL #2	E-10		
CHAPEL #3	B-7		
CHAPEL #4	B-3		
CHAPEL #5	C-1		
COOK	A-11		
CRITTENDEN	D-2		
CSH LAUNDRY	E-5		
CSH MUSEUM	F-3		
DENTAL CLINIC	C-3		
EWAC	B-12		
FIRE STATION	C-6		
FIRE TRAINING/POLICE	F-4		
FREEMAN	B-7		
GDC LAUNDRY	E-6		
GREEN	E-2		
GREENHOUSE	C-5		
HOLLY	F-8		
HOWELL	D-8		
INGRAM	F-7		
JONES	F-2		
KEMPER	G-7		
KIDD	A-11		
LAWRENCE	G-5		
MARY BROWN PAVILION	C-8		
NURSING HOME CENTER	E-6		
POST OFFICE	E-5		
POWELL	E-3		
POWELL ACTIVITY BLDG	F-4		
RIVERS	C-7		
RUSSELL	B-5		
STAFF DORMS & APTS	F-4		
VINSON	B-4		
WALKER	E-2		
WASHINGTON	D-10		
WHEELER	C-4		
WILKES	F-6		
WOOD	B-4		
YARBROUGH	E-5		

KEY:

	GA DEPT OF CORRECTIONS (GDC)
	GA DEPT OF VETERANS SERVICES
	RENAISSANCE PARK

RENAISSANCE PARK
MILLEDGEVILLE, GA 31062

CONTACT

Patty Burns, CCIM, ALC
478-746-9421 Office
478-951-5100 Cell
patty@fickling.com

Trip Wilhoit, CCIM, ALC
478-746-9421 Office
478-960-4080 Cell
trip@fickling.com

Jonathan Schuemann
478-746-9421 Office
561-676-4633 Cell
jonathan@fickling.com



577 Mulberry St, Suite 1100
Macon, GA 31201
478.746.9421 Office
https://commercial.fickling.com

This information is from resources deemed to be reliable and is subject to change without notice. No warranties or guarantees for accuracy are made by Fickling and Company.