

Landing Towne Square

580 Cape Cod Ln, Altamonte Springs, FL 32714

Palkiper
Commercial Real Estate Services
Licensed Real Estate Broker



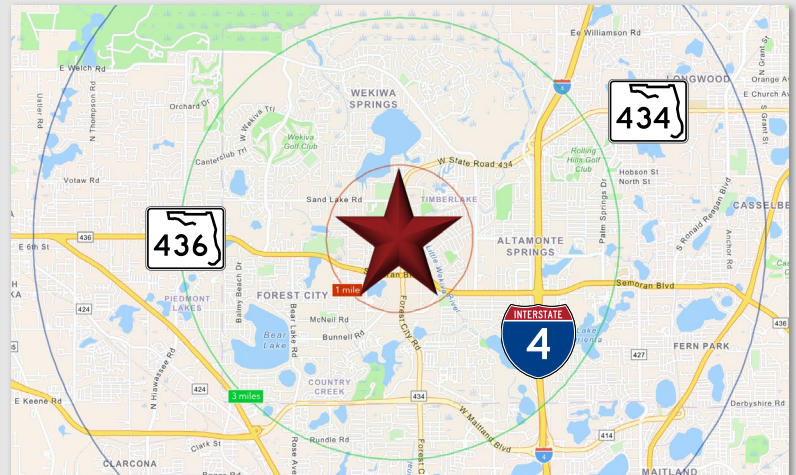
FOR LEASE: \$16 NNN

LOCATION HIGHLIGHTS

Located at the lighted intersection of Cape Cod Ln and SR 434 with traffic counts over 48,500 CPD. Nearby access to I-4 and SR 436 provides a convenient commute to West Town Corners, Uptown Altamonte, and Seminole State College. Surrounded by residential condominiums.

LISTING HIGHLIGHTS

- **Suite 04 | 1,080 SF**
 - Current use: hair and nail salon
 - Layout includes a waiting area, 3 rooms, kitchen, and a private restroom
- **Suite 05 | 1,177 SF**
 - Current use: general office
 - Layout includes 4 rooms, including a large private office, and a private restroom
- 74 shared parking spaces
- Monument and storefront signage available
- Access to a back porch overlooking a beautiful lake



2025 DEMOGRAPHICS	1-MILE	3-MILE	5-MILE
Population	14,014	99,189	210,949
Median HH Income	\$78,740	\$79,539	\$77,882
Average HH Income	\$103,610	\$111,834	\$106,936

CONTACT FOR MORE INFORMATION

Marie Shorey, CCIM

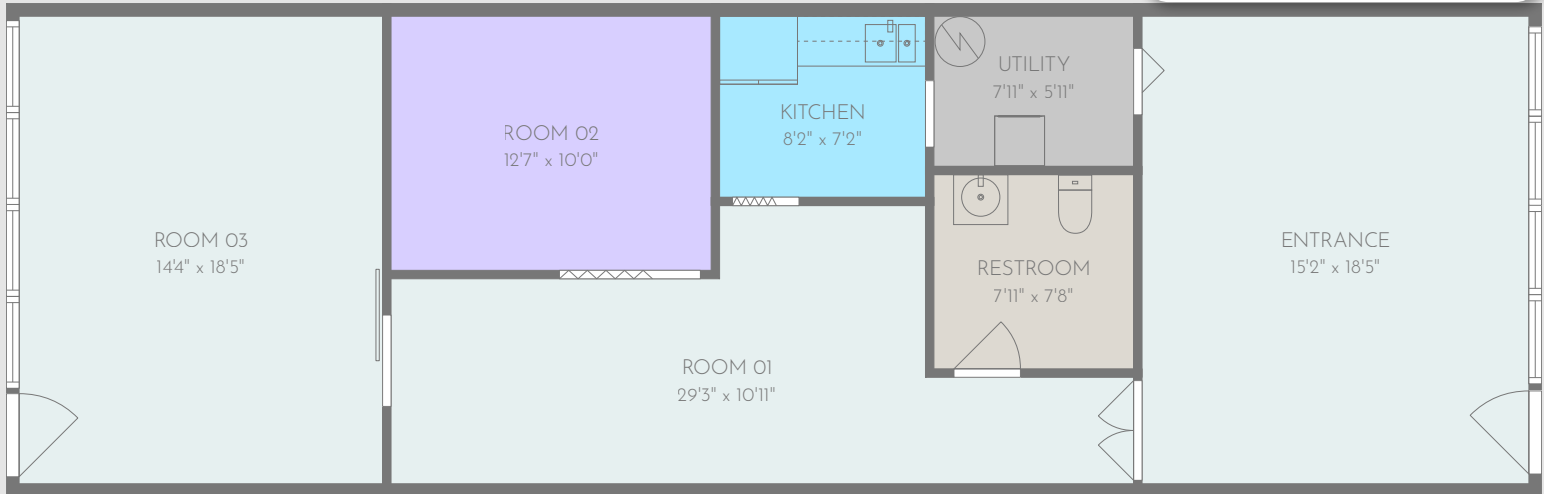
(407) 383-8142

Marie@palkiper.com

Landing Towne Square

580 Cape Cod Ln, Altamonte Springs, FL 32714

SUITE 04



NOT TO SCALE. Illustrated for marketing purposes only. Any measurements, sizes, and/or dimensions are approximate. Layout and furnishes shown may vary. Subject to continued revisions.



CONTACT FOR MORE INFORMATION

Marie Shorey, CCIM

(407) 383-8142

Marie@palkiper.com

Landing Towne Square

580 Cape Cod Ln, Altamonte Springs, FL 32714

Palkiper
Commercial Real Estate Services
Licensed Real Estate Broker



Room 03

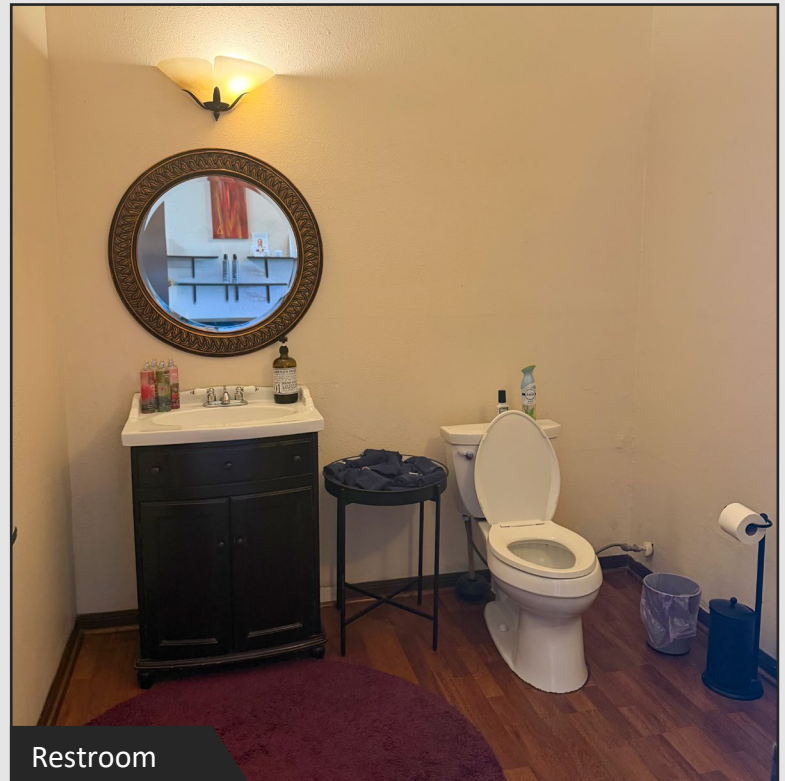


SUITE 04

Kitchen



Room 02



Restroom

CONTACT FOR MORE INFORMATION

Marie Shorey, CCIM

(407) 383-8142

Marie@palkiper.com