

ADRIAN - FORMER OPERATING/TURNKEY PROVISIONING CENTER

1561 WEST MAUMEE STREET | ADRIAN, MI



FOR SALE

C3 CRE, LLC

Woodward Crossings - 36800 Woodward Avenue | Suite 301 | Bloomfield Hills, MI 48304 | 248.220.1110 | c3cre.com

One Harbour Place - 777 South Harbour Island Boulevard | Suite 250 | Tampa, FL 33602 | 813.212.9155 | info@c3cre.com



ADRIAN - FORMER OPERATING/TURNKEY PROVISIONING CENTER

1561 WEST MAUMEE STREET | ADRIAN, MI

PROPERTY HIGHLIGHTS

- Former operating and turnkey Adult-Use Provisioning Center available for sale—license and real estate included.
- Located on a heavily traveled main thoroughfare with 50+ parking spaces and pylon signage for maximum brand exposure.
- The site has a high-end build-out; all that is missing is new branding and inventory.
- One (1) provisioning center and two (2) vacant units are included in the sale that can be rented out for additional income for a value-add.
- Tremendous synergy in the immediate marketplace with several national/regional tenants.
- Great opportunity to take advantage of the flourishing market near the Michigan and Ohio border.

DEMOGRAPHICS	1 MILE	3 MILES	5 MILES
Total Households	4,521	11,400	13,915
Total Population	11,177	31,090	38,018
Average HH Income	\$51,398	\$65,123	\$69,047

BUILDING SIZE

4,200 SF (Total)
 2,000 SF (Provisioning Center)
 1,200 SF (Vacant Unit)
 1,000 SF (Vacant Unit)

LAND SIZE

0.10 Acres

ASKING PRICE

\$999,999 (Seller Financing Available)

AREA TENANTS



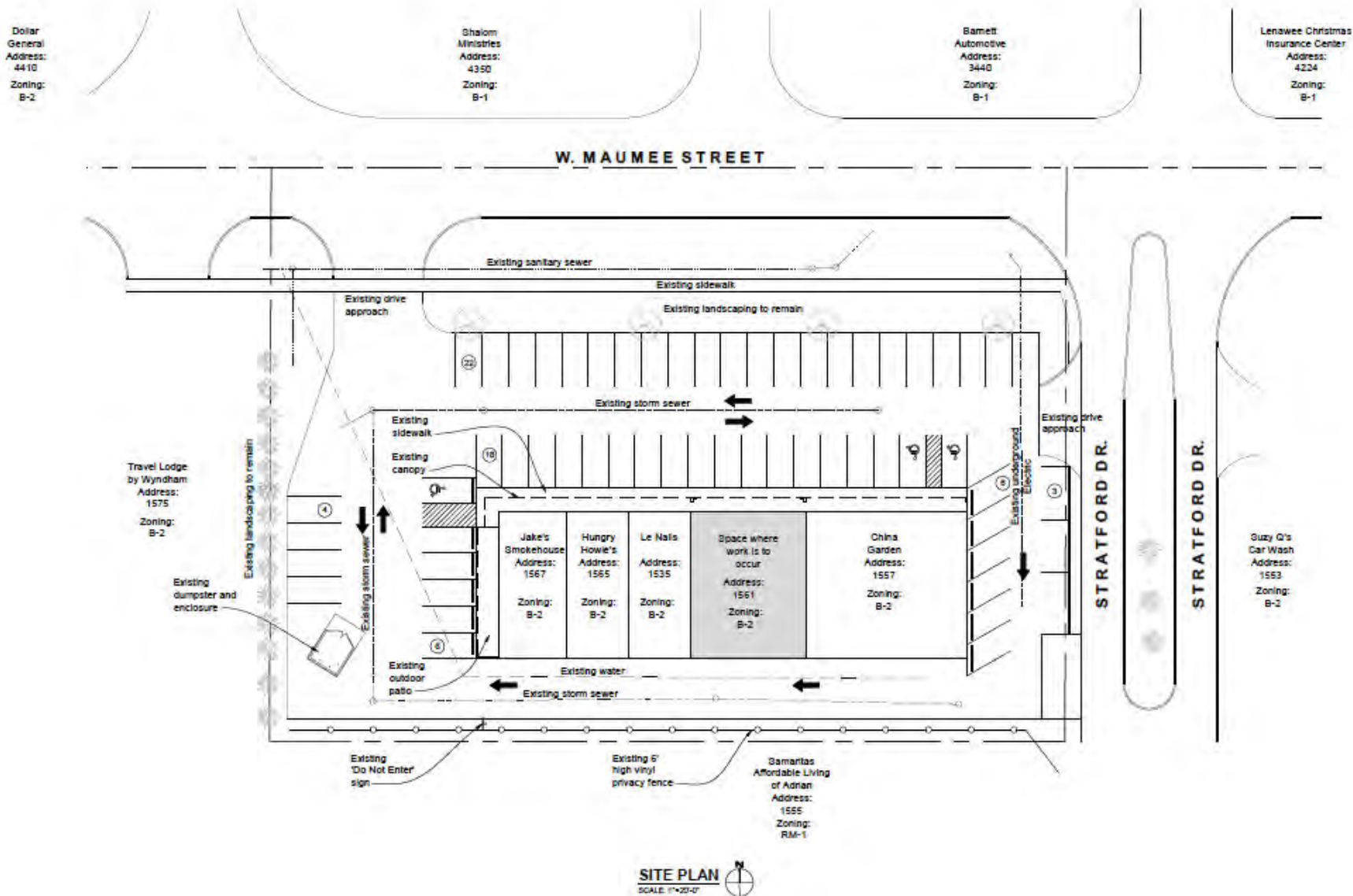
C3 CRE, LLC

Woodward Crossings - 36800 Woodward Avenue | Suite 301 | Bloomfield Hills, MI 48304 | 248.220.1110 | c3cre.com
 One Harbour Place - 777 South Harbour Island Boulevard | Suite 250 | Tampa, FL 33602 | 813.212.9155 | info@c3cre.com



ADRIAN - FORMER OPERATING/TURNKEY PROVISIONING CENTER

1561 WEST MAUMEE STREET | ADRIAN, MI



C3 CRE, LLC

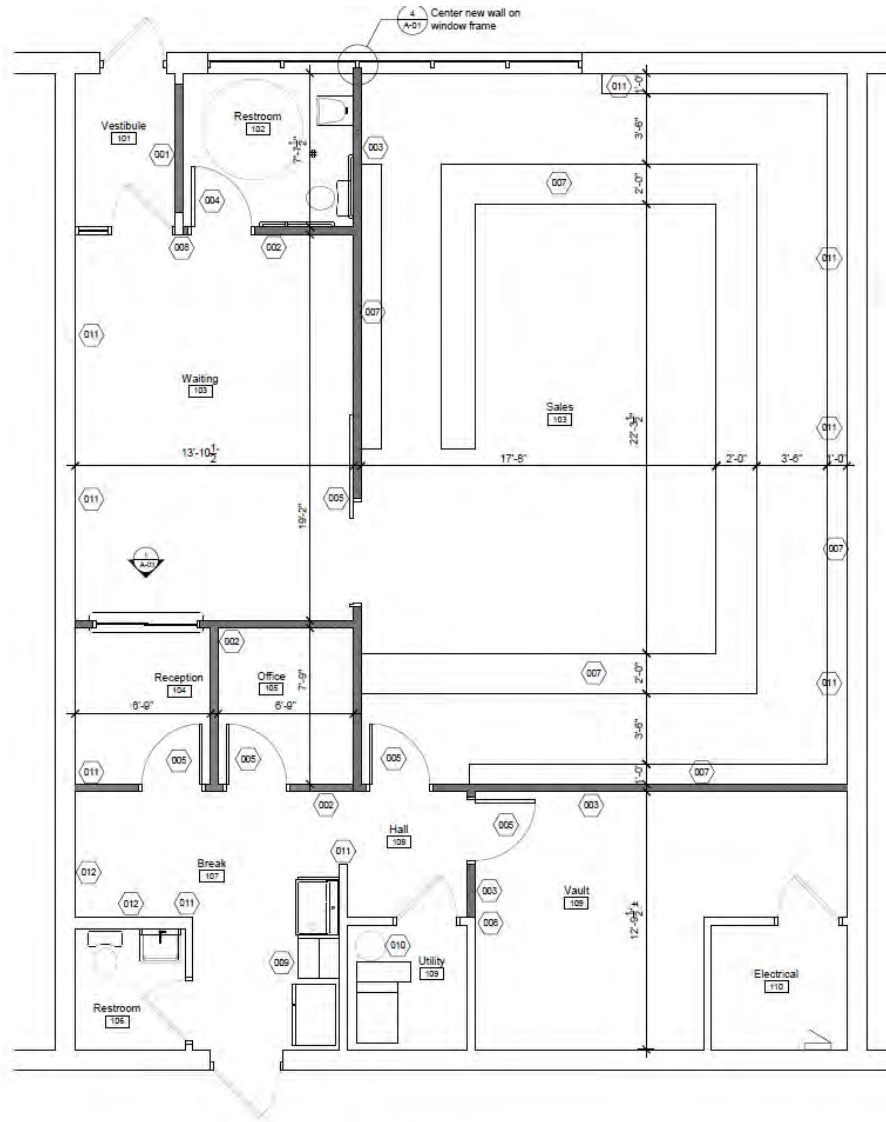
Woodward Crossings - 36800 Woodward Avenue | Suite 301 | Bloomfield Hills, MI 48304 | 248.220.1110 | c3cre.com

One Harbour Place - 777 South Harbour Island Boulevard | Suite 250 | Tampa, FL 33602 | 813.212.9155 | info@c3cre.com



ADRIAN - FORMER OPERATING/TURNKEY PROVISIONING CENTER

1561 WEST MAUMEE STREET | ADRIAN, MI



FLOOR PLAN
SCALE: 1/4"=1'-0"

C3 CRE, LLC

Woodward Crossings - 36800 Woodward Avenue | Suite 301 | Bloomfield Hills, MI 48304 | 248.220.1110 | c3cre.com
 One Harbour Place - 777 South Harbour Island Boulevard | Suite 250 | Tampa, FL 33602 | 813.212.9155 | info@c3cre.com



ADRIAN - FORMER OPERATING/TURNKEY PROVISIONING CENTER

1561 WEST MAUMEE STREET | ADRIAN, MI



C3 CRE, LLC

Woodward Crossings - 36800 Woodward Avenue | Suite 301 | Bloomfield Hills, MI 48304 | 248.220.1110 | c3cre.com

One Harbour Place - 777 South Harbour Island Boulevard | Suite 250 | Tampa, FL 33602 | 813.212.9155 | info@c3cre.com



ADRIAN - FORMER OPERATING/TURNKEY PROVISIONING CENTER

1561 WEST MAUMEE STREET | ADRIAN, MI



C3 CRE, LLC

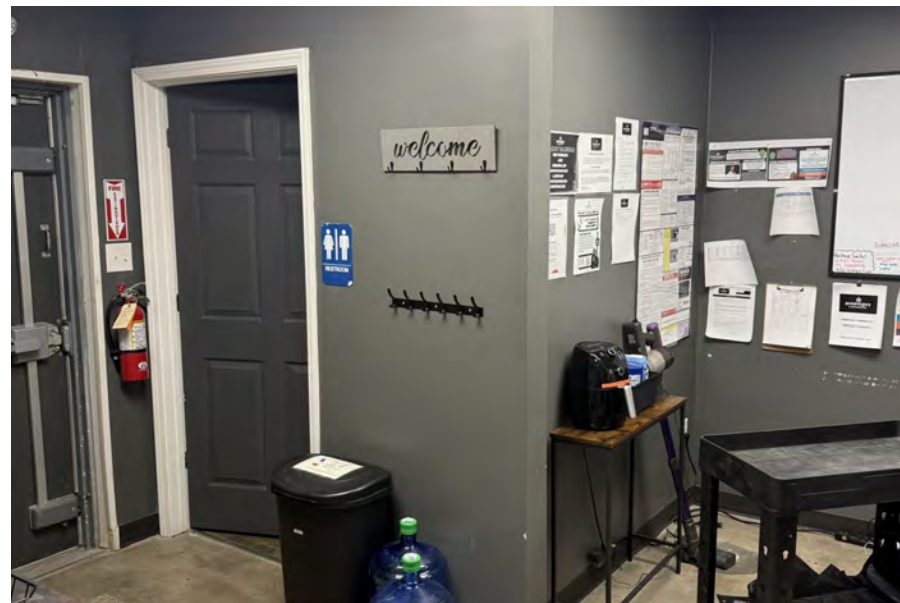
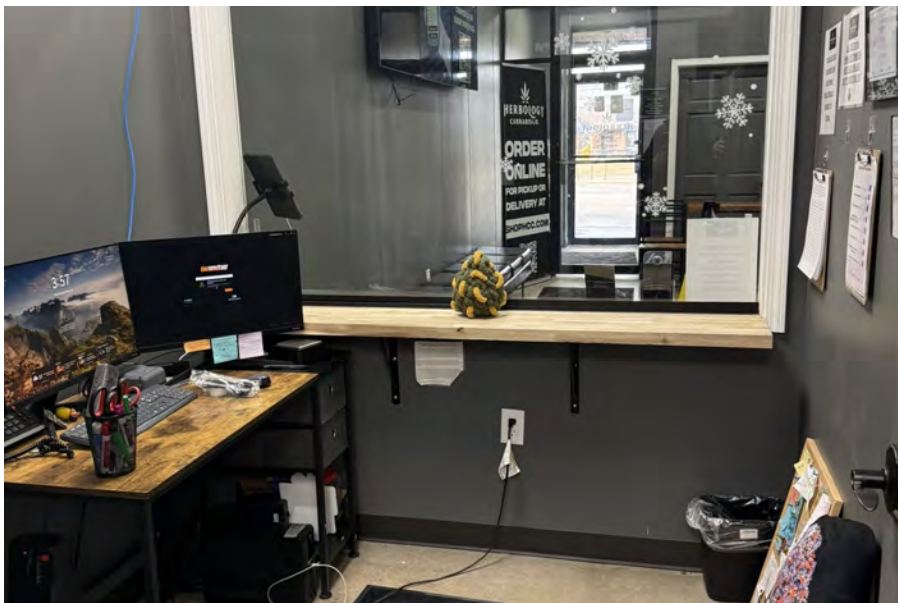
Woodward Crossings - 36800 Woodward Avenue | Suite 301 | Bloomfield Hills, MI 48304 | 248.220.1110 | c3cre.com

One Harbour Place - 777 South Harbour Island Boulevard | Suite 250 | Tampa, FL 33602 | 813.212.9155 | info@c3cre.com



ADRIAN - FORMER OPERATING/TURNKEY PROVISIONING CENTER

1561 WEST MAUMEE STREET | ADRIAN, MI



C3 CRE, LLC

Woodward Crossings - 36800 Woodward Avenue | Suite 301 | Bloomfield Hills, MI 48304 | 248.220.1110 | c3cre.com

One Harbour Place - 777 South Harbour Island Boulevard | Suite 250 | Tampa, FL 33602 | 813.212.9155 | info@c3cre.com



ADRIAN - FORMER OPERATING/TURNKEY PROVISIONING CENTER

1561 WEST MAUMEE STREET | ADRIAN, MI



Indiana - 50 Miles Away

Ohio - 20 Miles Away

Less than 4 miles away

meijer	O'Reilly	ADRIAN COLLEGE	Planet Fitness
ALDI	Comfort Inn & Suites	Ruco Zone	WAL-MART
LOWE'S	DOLLAR TREE	KOHL'S	CHEVROLET
Marshall's	HOBBY LOBBY	Hampton Inn & Suites	

C3 CRE, LLC

Woodward Crossings - 36800 Woodward Avenue | Suite 301 | Bloomfield Hills, MI 48304 | 248.220.1110 | c3cre.com

One Harbour Place - 777 South Harbour Island Boulevard | Suite 250 | Tampa, FL 33602 | 813.212.9155 | info@c3cre.com





CHARLES AL-SHEIKH

Sales Associate
248.220.1110 x02
charlie@c3cre.com

SERVICES

Buyer and Seller Representation
Land Brokerage

Cannabis Acquisitions and Dispositions
Portfolio and Surplus Property Sales

Investment Sales
Site Selection and Location Strategy

C3 CRE, LLC

Woodward Crossings - 36800 Woodward Avenue | Suite 301 | Bloomfield Hills, MI 48304 | 248.220.1110 | c3cre.com
One Harbour Place - 777 South Harbour Island Boulevard | Suite 250 | Tampa, FL 33602 | 813.212.9155 | info@c3cre.com



ADRIAN - FORMER OPERATING/TURNKEY PROVISIONING CENTER

1561 WEST MAUMEE STREET | ADRIAN, MI

General:

C3 CRE, LLC is a licensed real estate brokerage, and our employees and contractors are not a substitute for qualified legal, tax or accounting advice. We do not provide such advice. We recommend obtaining the advice of qualified legal counsel and other professionals. Any assistance we may provide in reviewing legal documents is for guidance as a courtesy only. Our agents have no authority to contractually bind any client.

All property information is subject to the possibility of errors, omissions, change of price or other terms or conditions, prior sale, lease or financing, and withdrawal without notice. Delays, omissions and inaccuracies may arise due to a number of factors, including changes in laws.

We obtain information from sources we believe are reliable, but we provide no guaranty or warranty concerning its accuracy. Any projections, estimates, future plans, and forward-looking statements are based on assumptions, subject to uncertainty, and may vary from actual results. All information should be independently verified.

Affiliations:

We may have relationships with companies we recommend or with whom we conduct business, including lenders, real estate brokers, loan brokers, insurance agents and others. We never require use of any company as a condition of our services. You should review each provider's fees, rates, terms of service and other relevant information.

Cannabis Industry Regulation:

Our services to those in the cannabis industry are limited by state laws relating to medical and adult use cannabis operations. All cannabis-related business is currently illegal under U.S. federal law. Nothing contained on our website or other marketing materials nor any of our services is intended to assist in any violation of law. Our cannabis-related marketing materials are intended for use in jurisdictions in which cannabis is legal. Both Michigan law and municipal ordinances have licensing and permitting requirements and processes for cannabis-related businesses. You should consult an attorney or other knowledgeable professional on such matters.

Real Estate Agency Relationships:

Seller's Agent - A seller's agent, under a listing agreement with the seller, acts solely on behalf of the seller. A seller can authorize a seller's agent to work with subagents, buyer's agents and/or transaction coordinators. A subagent is one who has agreed to work with the listing agent, and who, like the listing agent, acts solely on behalf of the seller. Seller's agents and subagents will disclose to the seller known information about the buyer which may be used to the benefit of the seller. Individual services may be waived by the seller through execution of a limited service agreement.

Buyer's Agent - A buyer's agent, under a buyer's agency agreement with the buyer, acts solely on behalf of the buyer. Buyer's agents and subagents will disclose to the buyer known information about the seller which may be used to benefit the buyer. Individual services may be waived by the buyer through execution of a limited service agreement.

Dual Agents - A real estate licensee can be the agent of both the seller and the buyer in a transaction, but only with the knowledge and informed consent, in writing, of both the seller and the buyer. In such a dual agency situation, the agent will not be able to disclose all known information to either the seller or the buyer. The obligations of a dual agent are subject to any specific provisions set forth in any agreement between the dual agent, the seller, and the buyer.

C3 CRE, LLC

Woodward Crossings - 36800 Woodward Avenue | Suite 301 | Bloomfield Hills, MI 48304 | 248.220.1110 | c3cre.com

One Harbour Place - 777 South Harbour Island Boulevard | Suite 250 | Tampa, FL 33602 | 813.212.9155 | info@c3cre.com

