

FOR LEASE

AMERICAN INDUSTRIAL CENTER

955 CHARLES STREET | LONGWOOD, FL 32750



**8,450 SF AVAILABLE
OCCUPANCY
WITHIN 30 DAYS**

LOCATION

American Industrial Center sits in the heart of Longwood's established industrial corridor, just off South Ronald Reagan Boulevard and strategically positioned between State Road 434 and State Road 436, two of the area's primary east-west thoroughfares. The site offers convenient connectivity to Interstate 4 (I-4) the major regional interstate linking Orlando, Sanford, and beyond as well as direct access to surrounding Seminole County markets and central Florida's broader transportation network.

CONTACT:

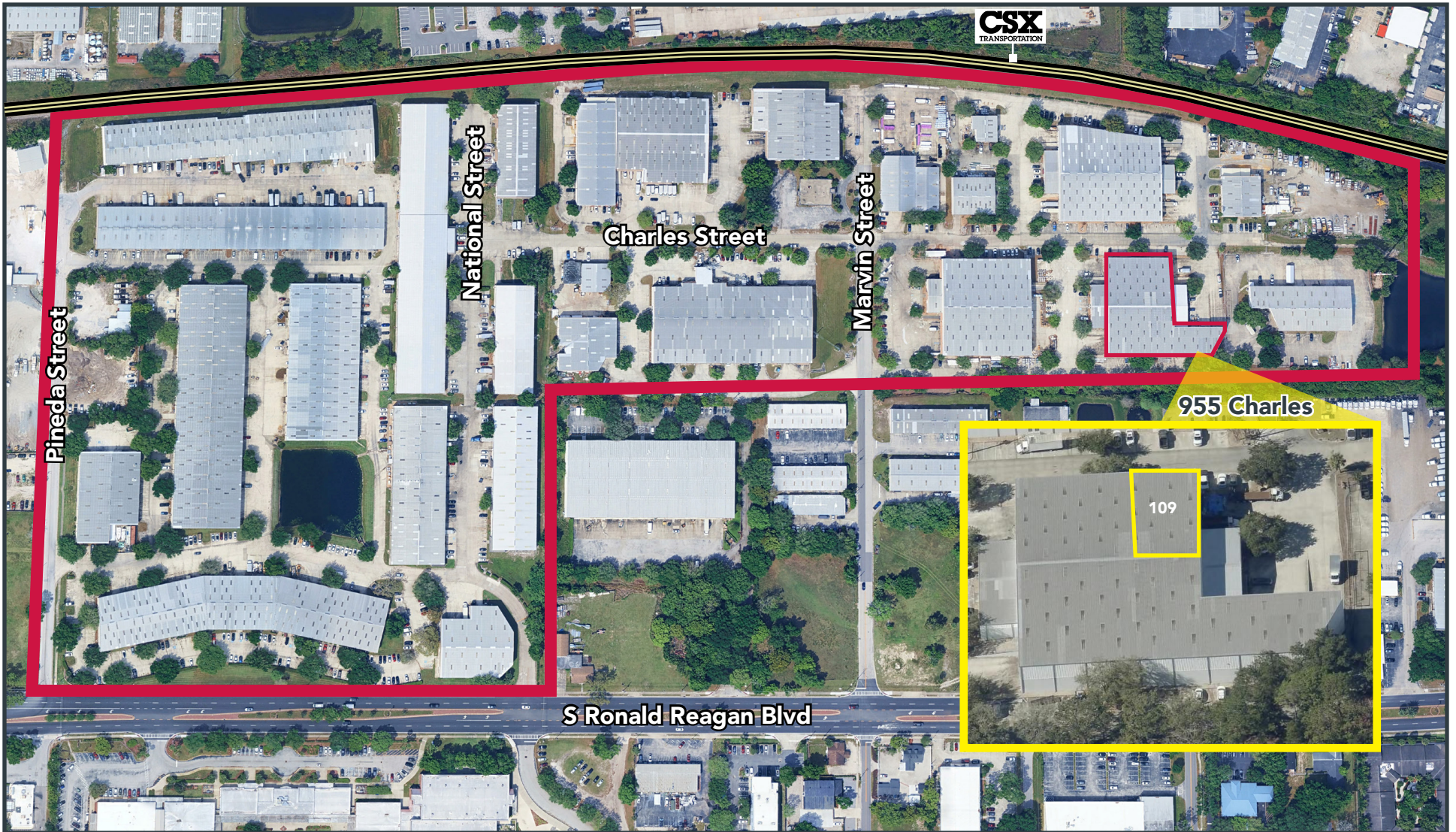
Derek Riggelman, SIOR
Senior Vice President/Principal
driggelman@lee-associates.com
D 407.456.3463

Aaron Torres
Associate
atorres@lee-associates.com
D 407.922.7632

Brady Benton
Associate
bbenton@lee-associates.com
D 863.624.1936

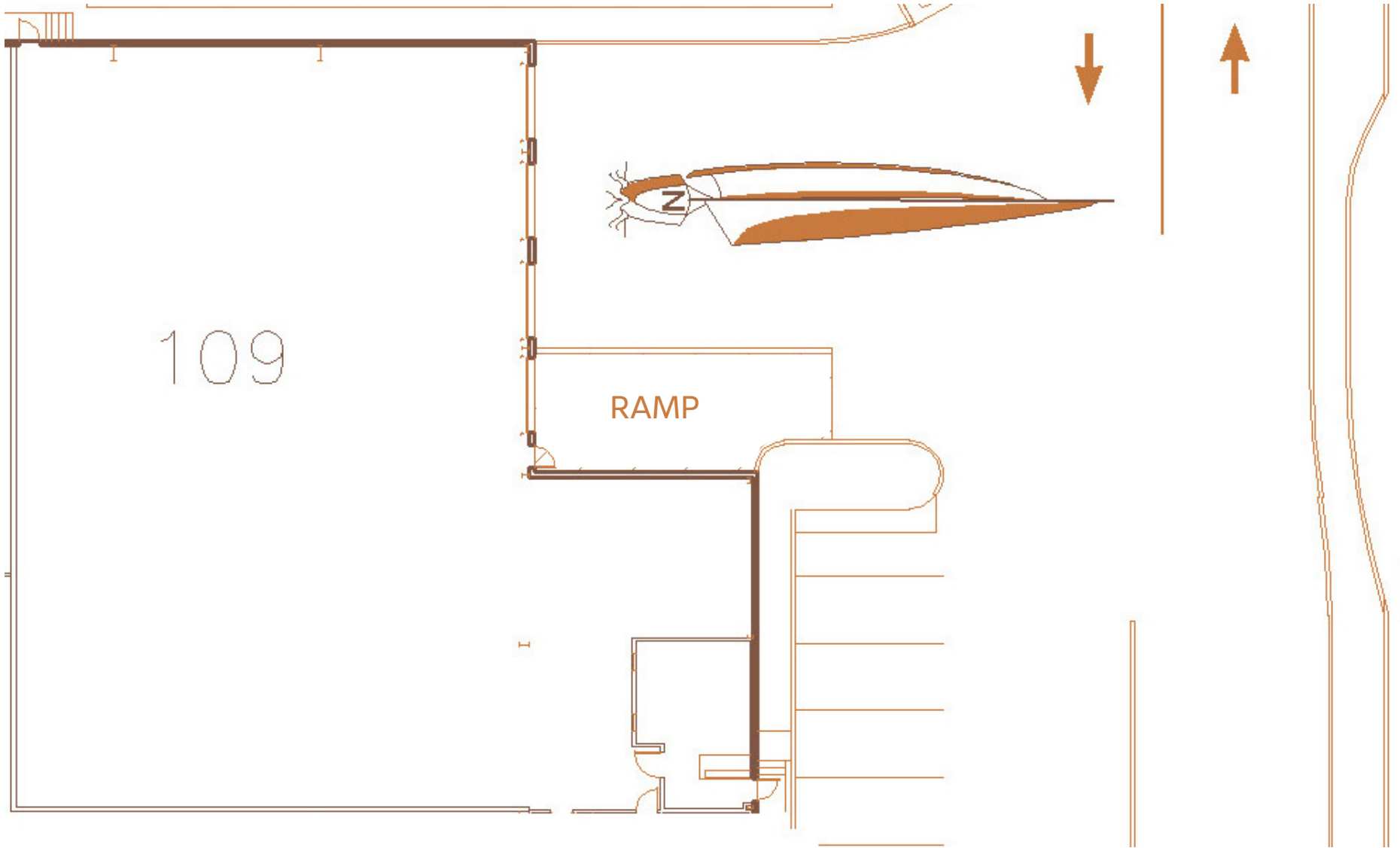
Ryan Griffith
Senior Vice President/Principal
rgriffith@lee-associates.com
D 908.208.4774

SITE PLAN | AVAILABILITIES



SUITE	AVAILABLE	SIZE (SF)	CLEAR HEIGHT	LEASE TYPE	LEASE RATE*	DESCRIPTION
109	30 Days	8,450 SF	24' Peaks to ±28'	NNN	Call for Info	±250 SF Office with Three (3) Dock High Doors and One (1) Ramped Door









CONTACT:

Derek Riggleman, SIOR
Senior Vice President/Principal
driggleman@lee-associates.com
D 407.456.3463

Aaron Torres
Associate
atorres@lee-associates.com
D 407.922.7632

Brady Benton
Associate
bbenton@lee-associates.com
D 863.624.1936

Ryan Griffith
Senior Vice President/Principal
rgriffith@lee-associates.com
D 908.208.4774

All information furnished regarding property for sale, rental or financing is from sources deemed reliable, but no warranty or representation is made to the accuracy thereof and same is submitted to errors, omissions, change of price, rental or other conditions prior to sale, lease or financing or withdrawal without notice. No liability of any kind is to be imposed on the broker herein.