

For Lease
1,178-2,938 SF
Office Space



Boynton Beach Professional Center

1325 South Congress Avenue, Boynton Beach, FL 33426

Property Features

- Move-in ready space
- Serene setting with courtyard and lush, tropical landscaping
- Improvement allowance available
- Just 1.5 miles west of I-95 and 3 miles from Bethesda Hospital East
- Central to numerous shopping, dining, and banking options – just 1.5 miles from the Boynton Beach Mall, Boynton Town Center, and more

Key Features:



Minutes from I-95,
the Florida Turnpike &
numerous retail amenities



Outstanding parking



Direct suite access -
no shared lobbies



Institutionally national
recognized ownership

For more information

Lesley Sheinberg, Managing Director
561 254 7810 | lsheinberg@mhcreal.com

Jason L. Sundook, SIOR
Principal | jsundook@mhcreal.com



FOR LEASE: BOYNTON BEACH PROFESSIONAL CENTER

Fantastic Location. Great Rates. Ample Parking.



FANTASTIC OFFICE SPACE NEAR THE BEST OF BOYNTON BEACH

Property: 1325 South Congress Avenue, Boynton Beach, FL 33426


Available Space: Suite 108 – 1,500 SF
Suite 200 – 1,518 SF
Suite 205 – 1,178 SF
Suite 212 – 2,938 SF

Rental Rate: \$32.00/SF Gross

Parking: Ample, free surface parking (5:1,000)

For More Information:

Lesley Sheinberg | lsheinberg@mhcreal.com
Jason L. Sundook, SIOR | jsundook@mhcreal.com

 561 471 8000

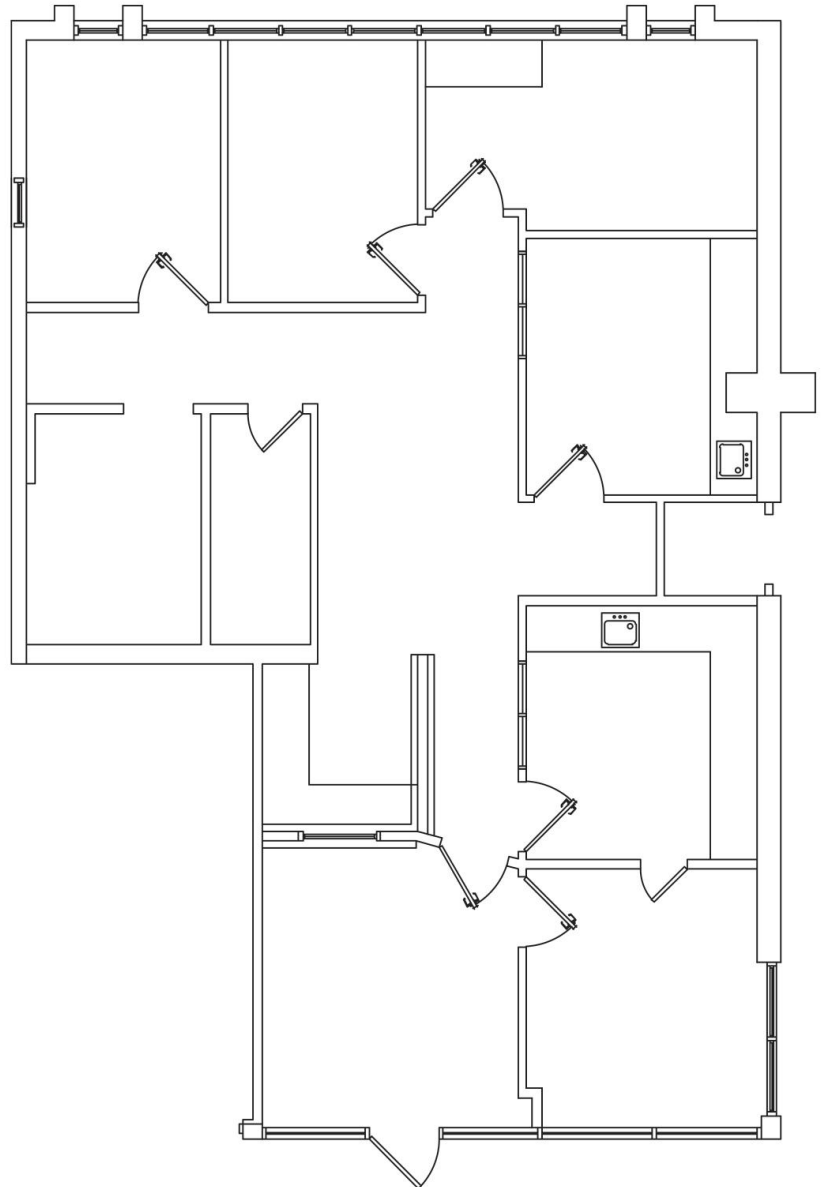
 www.mhcreal.com

FOR LEASE: BOYNTON BEACH PROFESSIONAL CENTER

Flexible Layout | Move-In Ready

Suite 108 ±1,500 SF


- Thoughtful layout featuring a reception area and private offices



For More Information:

Lesley Sheinberg | lsheinberg@mhcreal.com

Jason L. Sundook, SIOR | jsundook@mhcreal.com

 561 471 8000



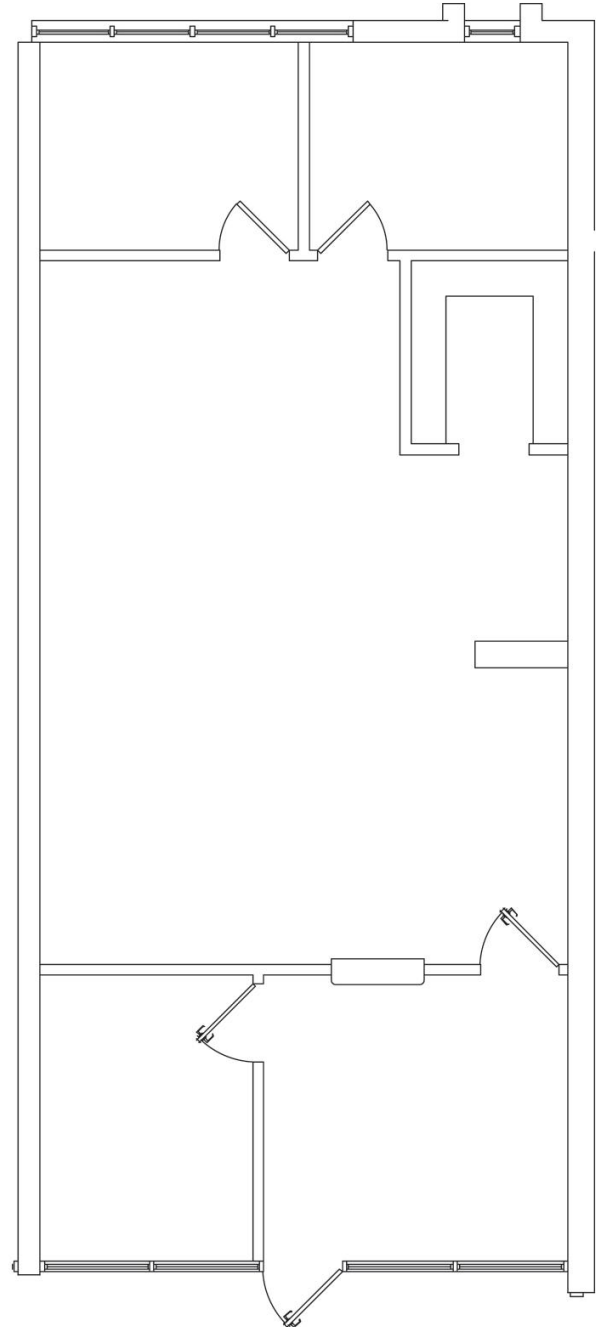
www.mhcreal.com

FOR LEASE: BOYNTON BEACH PROFESSIONAL CENTER

Efficient Space | Direct Entry

Suite 205 ±1,178 SF

- Functional layout featuring private offices and a central workspace



For More Information:

Lesley Sheinberg | lsheinberg@mhcreal.com
Jason L. Sundook, SIOR | jsundook@mhcreal.com

 561 471 8000



www.mhcreal.com