

972,079 SF  
Available for Lease



# Constellation Air Commerce Park

9822-9876 Air Commerce Pkwy, Orlando, FL 32824



Building 100.....	456,002 SF
Building 200.....	283,580 SF
Building 300.....	232,497 SF

**Total 972,079 SF**

- Immediate access to Orlando Int'l Airport. Proximity to State Road 528, Florida Turnpike, State Road 417 provides excellent East to West and North to South connectivity throughout adjacent communities as well as the Orlando MSA.
- Ideal layout with multiple traffic-controlled points of ingress/egress with full circulation, (175) trailer parking, ESFR sprinkler systems.
- Premium product in a constrained warehouse submarket where rooftop expansion and consumption continue to surge.
- This project has achieved LEED Silver® certification. LEED® is the preeminent program for the design, construction, maintenance, and operations of high performance green buildings.



**40K to 456K**  
SF available

<6 miles from key  
transportation arteries  
(Orlando International Airport  
528, 417, FLTP)

**36'**  
clear heights

Deep labor pool  
and executive  
housing nearby

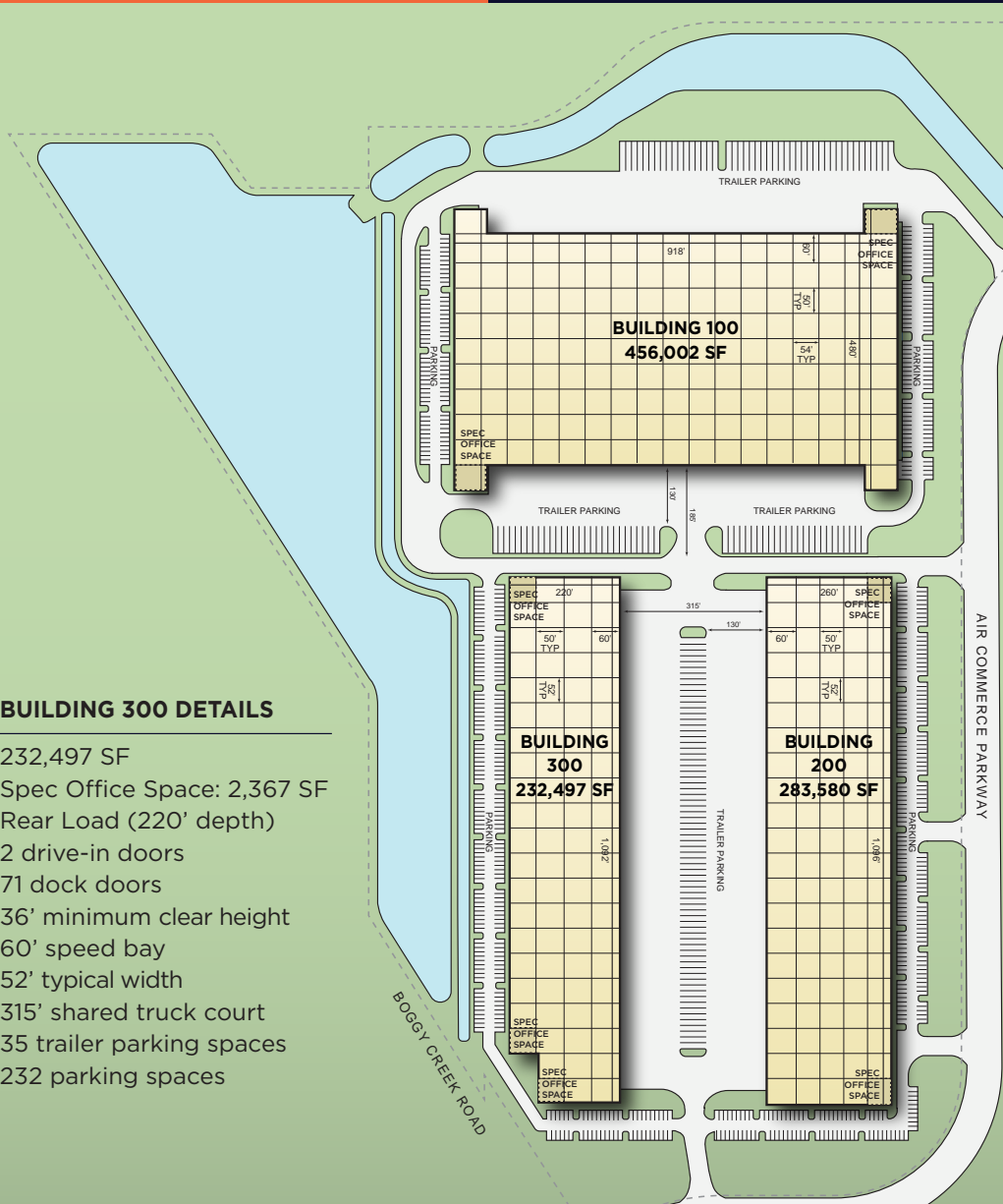
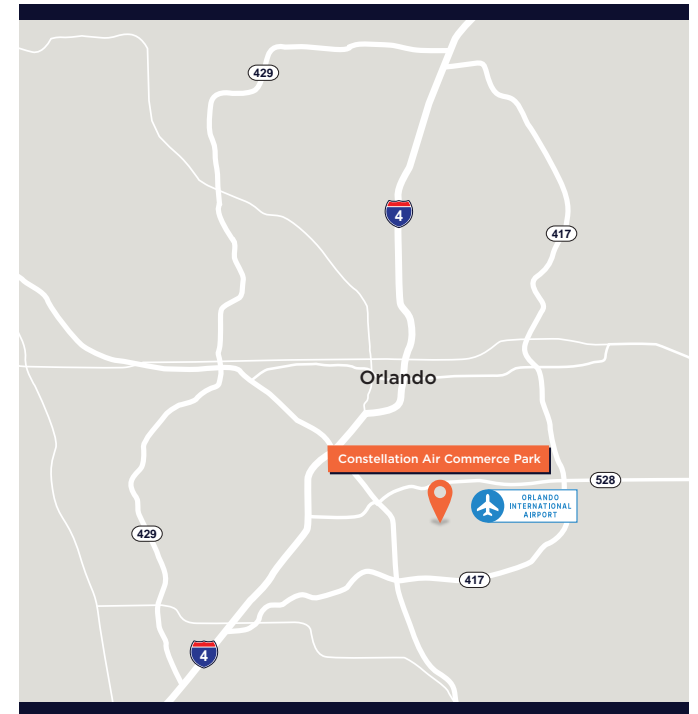
This information has been obtained from sources deemed to be reliable, however, cannot be warranted nor form any part of any future contract. All parties should conduct a careful, independent investigation of the project to verify all information.

972,079 SF  
Available for Lease



# Constellation Air Commerce Park

9822-9876 Air Commerce Pkwy, Orlando, FL 32824



### BUILDING 300 DETAILS

- 232,497 SF
- Spec Office Space: 2,367 SF
- Rear Load (220' depth)
- 2 drive-in doors
- 71 dock doors
- 36' minimum clear height
- 60' speed bay
- 52' typical width
- 315' shared truck court
- 35 trailer parking spaces
- 232 parking spaces

### BUILDING 100 DETAILS

- 456,002 SF
- Spec Office Space: 3,241 SF
- Cross-Dock (480' depth)
- 4 drive-in doors
- 102 dock doors
- 36' minimum clear height
- 60' speed bay
- 54' typical width
- 185' truck court
- 105 trailer parking spaces
- 195 parking spaces

### BUILDING 200 DETAILS

- 283,580 SF
- Spec Office Space: 2,367 SF
- Rear Load (260' depth)
- 2 drive-in doors
- 71 dock doors
- 36' minimum clear height
- 60' speed bay
- 52' typical width
- 315' shared truck court
- 35 trailer parking spaces
- 284 parking spaces



**Jared Bonshire, SIOR**  
Executive Managing Director  
Certified Supply Chain Professional  
Logistics & Industrial Services  
407.541.4414 | Direct  
407.617.9193 | Mobile  
407.264.6161 | Fax  
[jared.bonshire@cushwake.com](mailto:jared.bonshire@cushwake.com)

**Taylor Zambito**  
Senior Director  
407.541.4409 | Direct  
[taylor.zambito@cushwake.com](mailto:taylor.zambito@cushwake.com)

**Ryan Hubbard**  
Director  
407.541.4390 | Direct  
[ryan.hubbard@cushwake.com](mailto:ryan.hubbard@cushwake.com)

**David Perez**  
Executive Managing Director  
407.541.4435 | Direct  
[david.perez@cushwake.com](mailto:david.perez@cushwake.com)



**Scott Alexander**  
Partner  
954.864.4833 | Mobile  
[scotta@constellationrep.com](mailto:scotta@constellationrep.com)

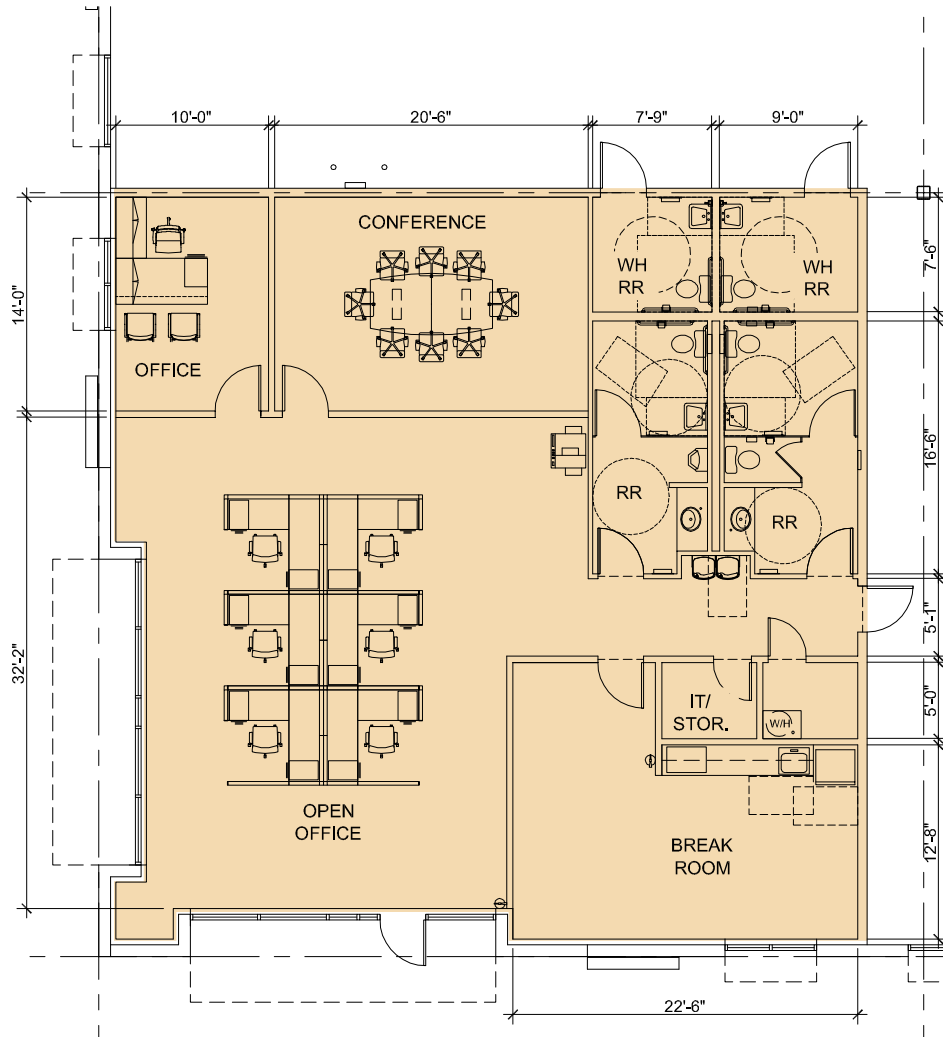
**Josh Huster**  
Development Associate  
513.432.9581 | Mobile  
[joshh@constellationrep.com](mailto:joshh@constellationrep.com)



972,079 SF  
Available for Lease

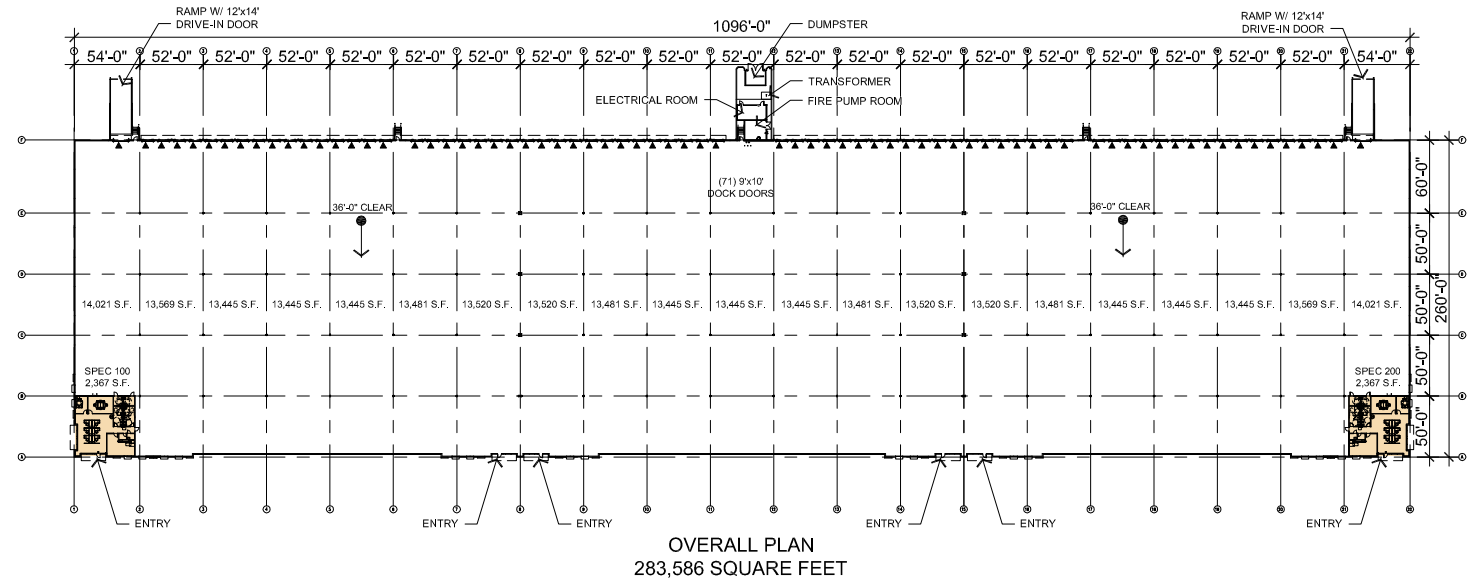


Constellation Air Commerce Park  
9822-9876 Air Commerce Pkwy, Orlando, FL 32824



**BUILDING 200 DETAILS**

- 2,367 SF: Spec Office Space
- 283,580 SF: Total Building
- Rear Load (260' depth)
- 2 drive-in doors
- 71 dock doors
- 36' minimum clear height
- 60' speed bay
- 52' typical width
- 315' shared truck court
- 35 trailer parking spaces
- 284 parking spaces





972,079 SF  
Available for Lease



# Constellation Air Commerce Park

9822-9876 Air Commerce Pkwy, Orlando, FL 32824

