



FOUNDRY  
COMMERCIAL



PRINCETON  
OAKS

**BLDG 1000, SUITE 180**

42,386 SF AVAILABLE



# AVAILABILITY

## PHASE 2B

### BUILDING 1000

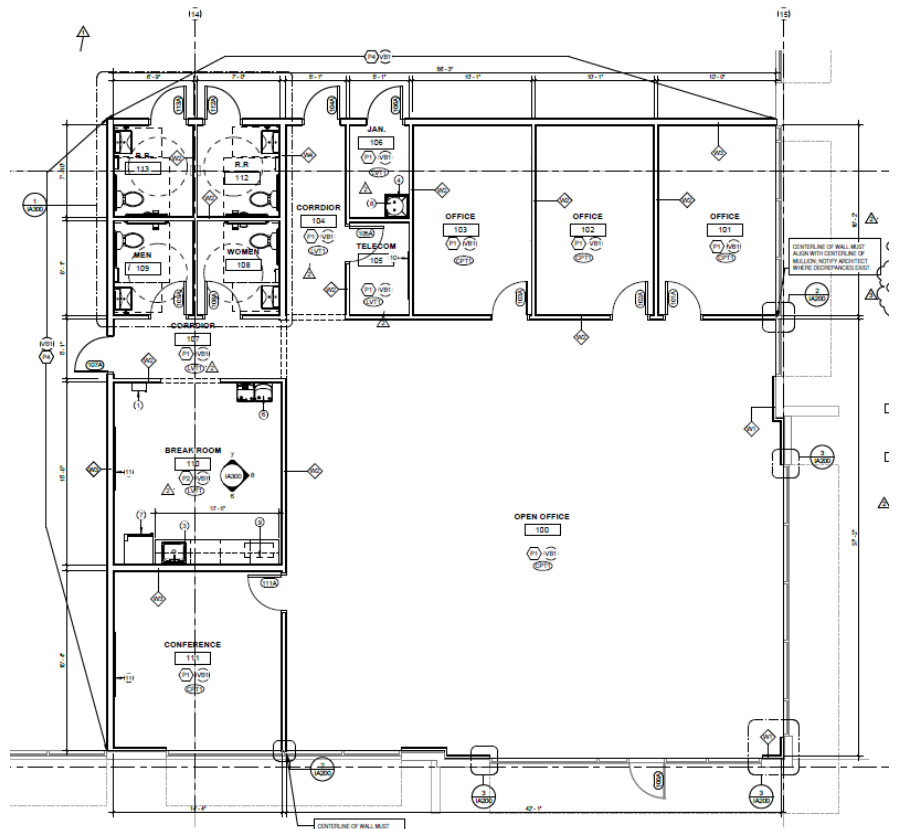
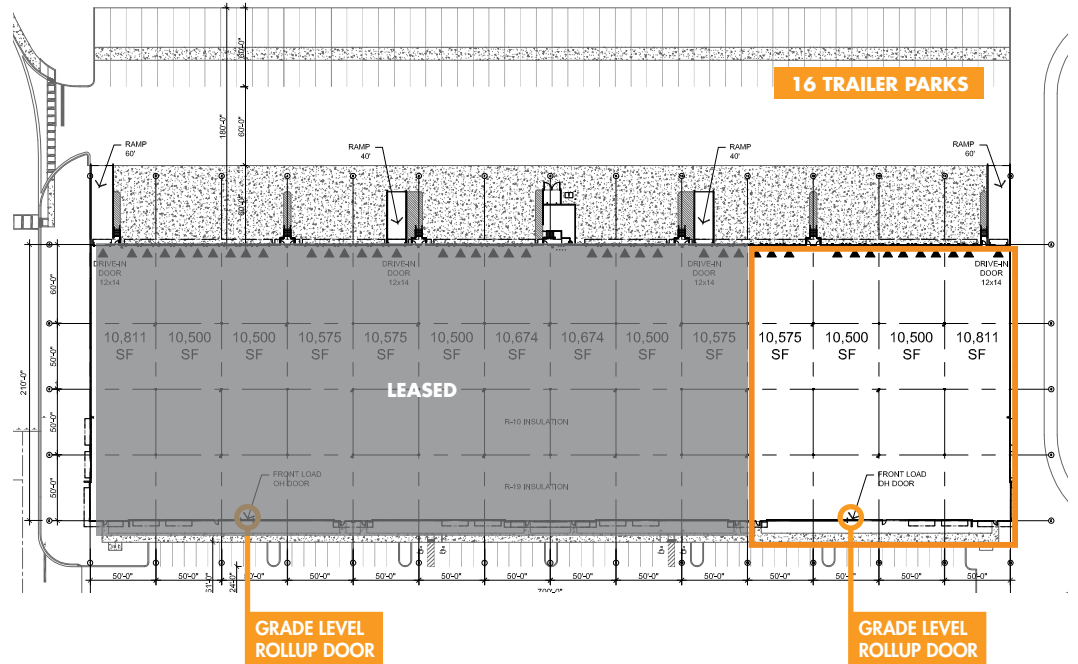
TOTAL SF:	148,270 SF
CONCRETE SLAB:	6" Slab (4,000 PSI)
OVERHEAD DOORS:	43 Rear-loading Dock high (9'x10')
<b>CLEAR HEIGHT:</b>	<b>32'</b>
COLUMN SPACING:	50 x 50' 60' speed bay
DIMENSIONS:	210' x 700'
PARKING RATIO:	1.3 / 1,000
FIRE:	ESFR
LIGHTING:	LED
<b>TRAILER PARKS:</b>	<b>16</b>
OTHER:	Four 12' x 14' ramps

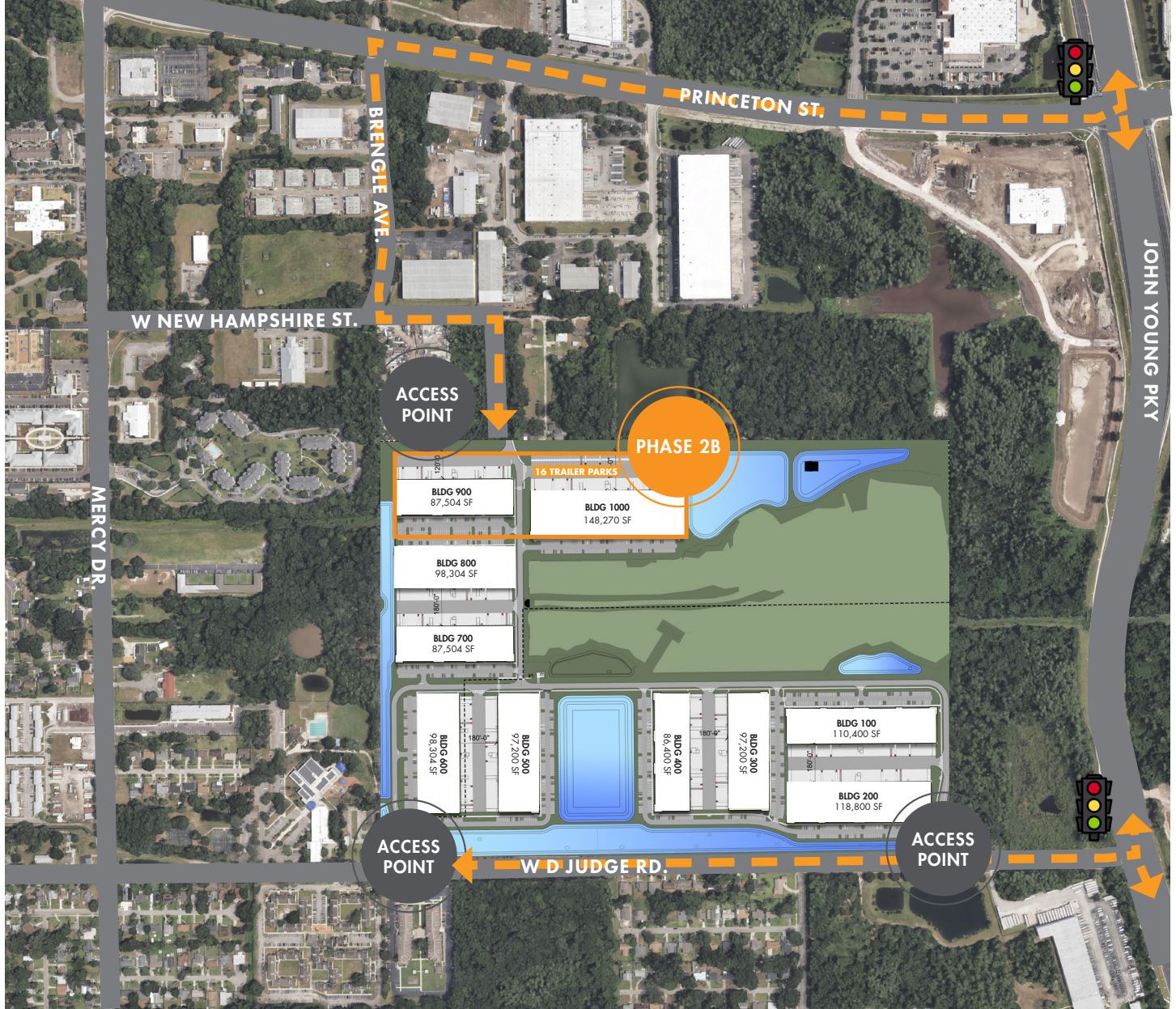
### AVAILABILITY

<b>AVAILABLE:</b>	<b>42,386 SF</b>
OFFICE SF:	3,386 SF
TRUCK COURT DEPTH:	120' Standalone
OVERHEAD DOORS:	12 Rear-loading, Dock high (9' x 10')
RAMP DOORS:	1 (12' x 14')
GRADE LEVEL DOORS:	Located on the front of the building
POWER	400 amps/3-phase
FAN	HVLS fan

### SPEC OFFICE PLAN

3,386 SF





## WHY PRINCETON OAKS

VALENCIA COLLEGE  
LABOR/JOB SKILLS



POWER / WATER



CONNECTIVITY



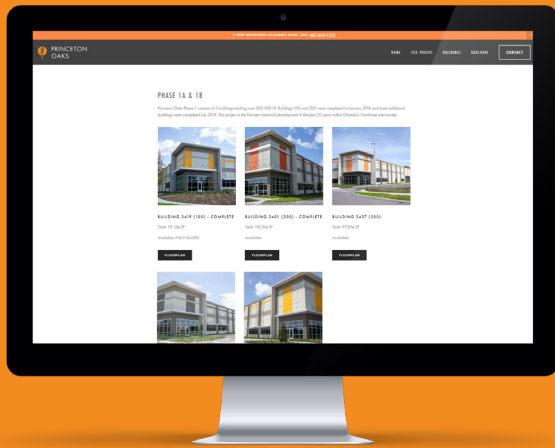
SEWER



MUNICIPALITY



**CLICK OR SCAN HERE** to learn more about the Valencia College Accelerated Skills Training programs located at Princeton Oaks.



Find aerial videos of the site,  
updated leasing info, and more:

[PRINCETONOAKSINDUSTRIAL.COM](http://PRINCETONOAKSINDUSTRIAL.COM)

CALL TODAY FOR MORE INFO:

**JUSTIN RUBY, SIOR, CCIM**  
407.865.0311  
[Justin.Ruby@foundrycommercial.com](mailto:Justin.Ruby@foundrycommercial.com)

**JOEY WOODMAN, SIOR**  
407.748.5888  
[Joey.Woodman@foundrycommercial.com](mailto:Joey.Woodman@foundrycommercial.com)

**TRAVIS HAMMOND**  
407.401.1707  
[Travis.Hammond@foundrycommercial.com](mailto:Travis.Hammond@foundrycommercial.com)

A DEVELOPMENT BY:

**FOUNDRY**  
COMMERCIAL

FOUNDRY COMMERCIAL  
420 S Orange Ave, Suite 400  
Orlando, FL 32801

Although the information contained herein was provided by sources believed to be reliable, Foundry Commercial makes no representation, expressed or implied, as to its accuracy and said information is subject to errors, omissions or changes.