

Tower Road 15 AC



Bexley
1,700+ Planned
Residential Units

**15.1±
Acres**

Tower Road

Joy Drive

TOWER ROAD

4695 TOWER RD, LAND O LAKES, FL 34638

Eshenbaugh
LAND COMPANY

The Dirt Dog



www.thedirtdog.com

Property Description

PROPERTY DESCRIPTION

The opportunity is to acquire 15.1± acres located at 4695 Tower Road in Land O Lakes, within unincorporated Pasco County. The property is zoned AC (Agricultural) and carries a RES-3 (Residential-3) Future Land Use designation, allowing for up to three dwelling units per acre, subject to permitting. The site contains a mix of uplands and wetlands.

LOCATION DESCRIPTION

The property is located along Tower Road near the Bexley master-planned community, with convenient access to US Highway 41 and State Road 54. The surrounding area features established neighborhoods and ongoing residential growth within one of Pasco County's most active residential submarkets.

MUNICIPALITY

Pasco

PROPERTY SIZE

15.1 Acres

ZONING

AC

FUTURE LAND USE

RES-3

PARCEL ID

15-26-18-0000-00600-0020, 15-26-18-0000-00600-0000

PRICE

\$750,000

BROKER CONTACT INFO

Josh Streitmatter

Advisor

813.287.8787 x113

josh@thedirt dog.com

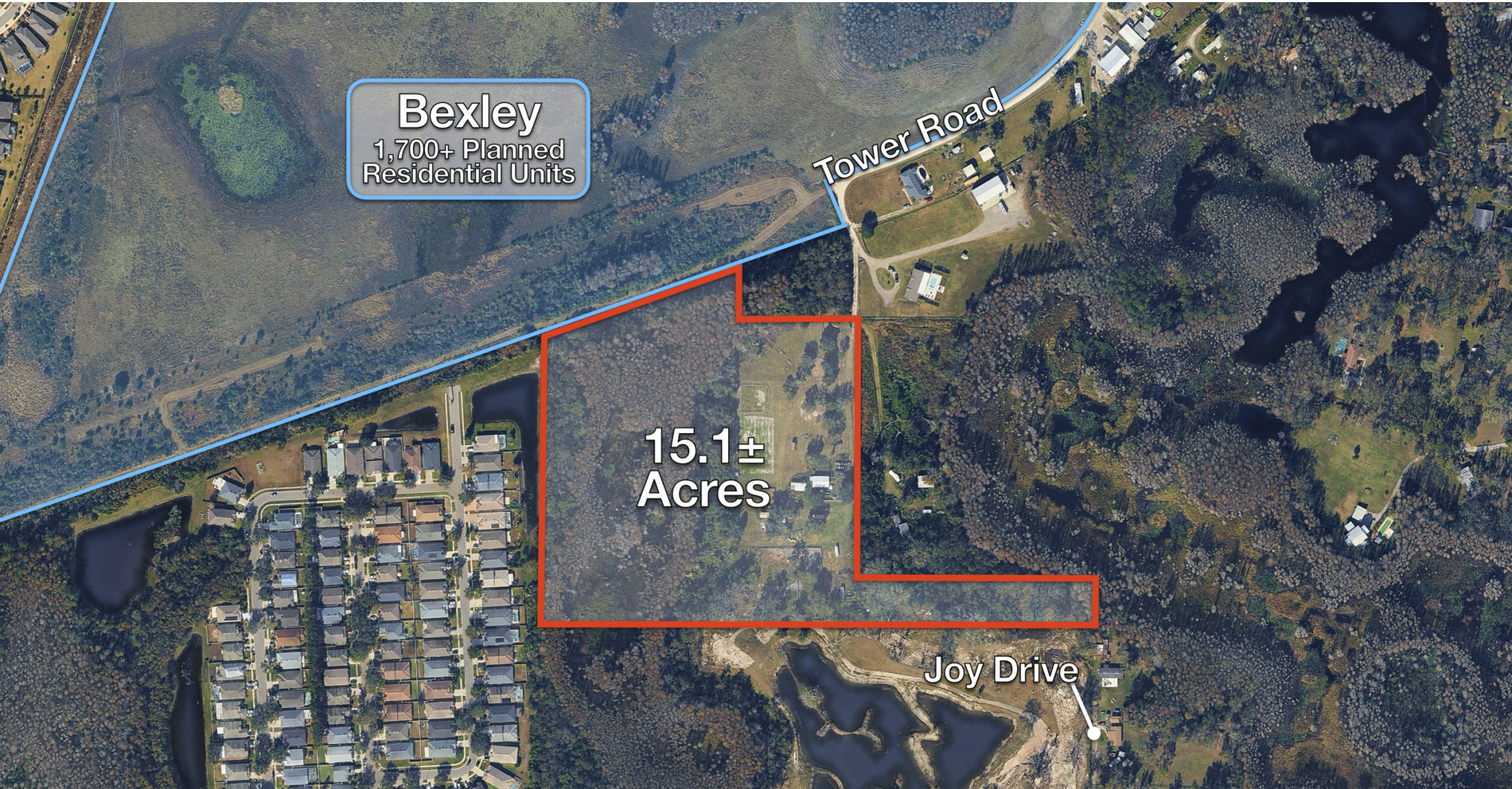
Richie Timmons

Advisor

813.287.8787 x116

richie@thedirt dog.com

Aerial



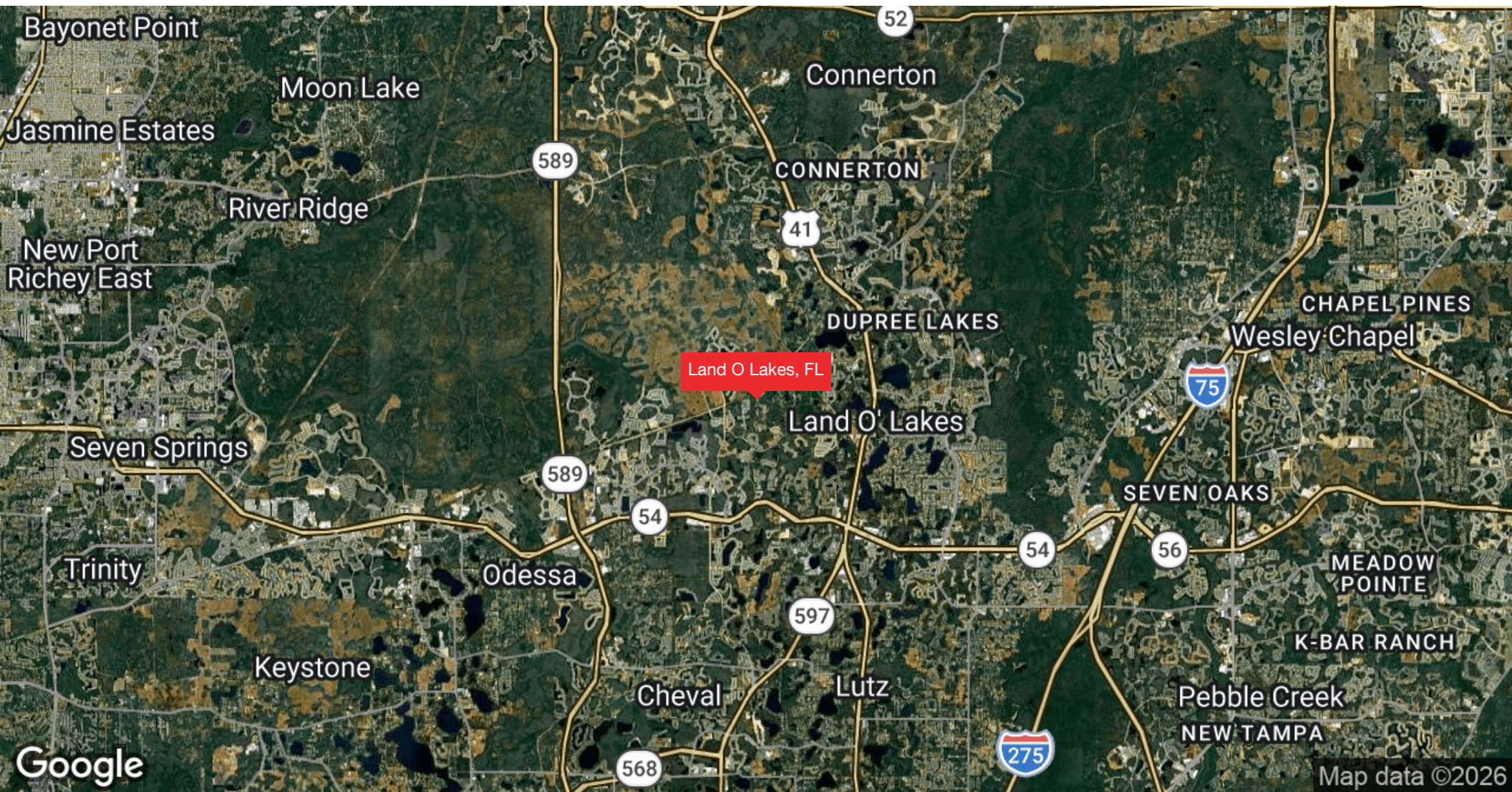
Bexley
1,700+ Planned
Residential Units

**15.1±
Acres**

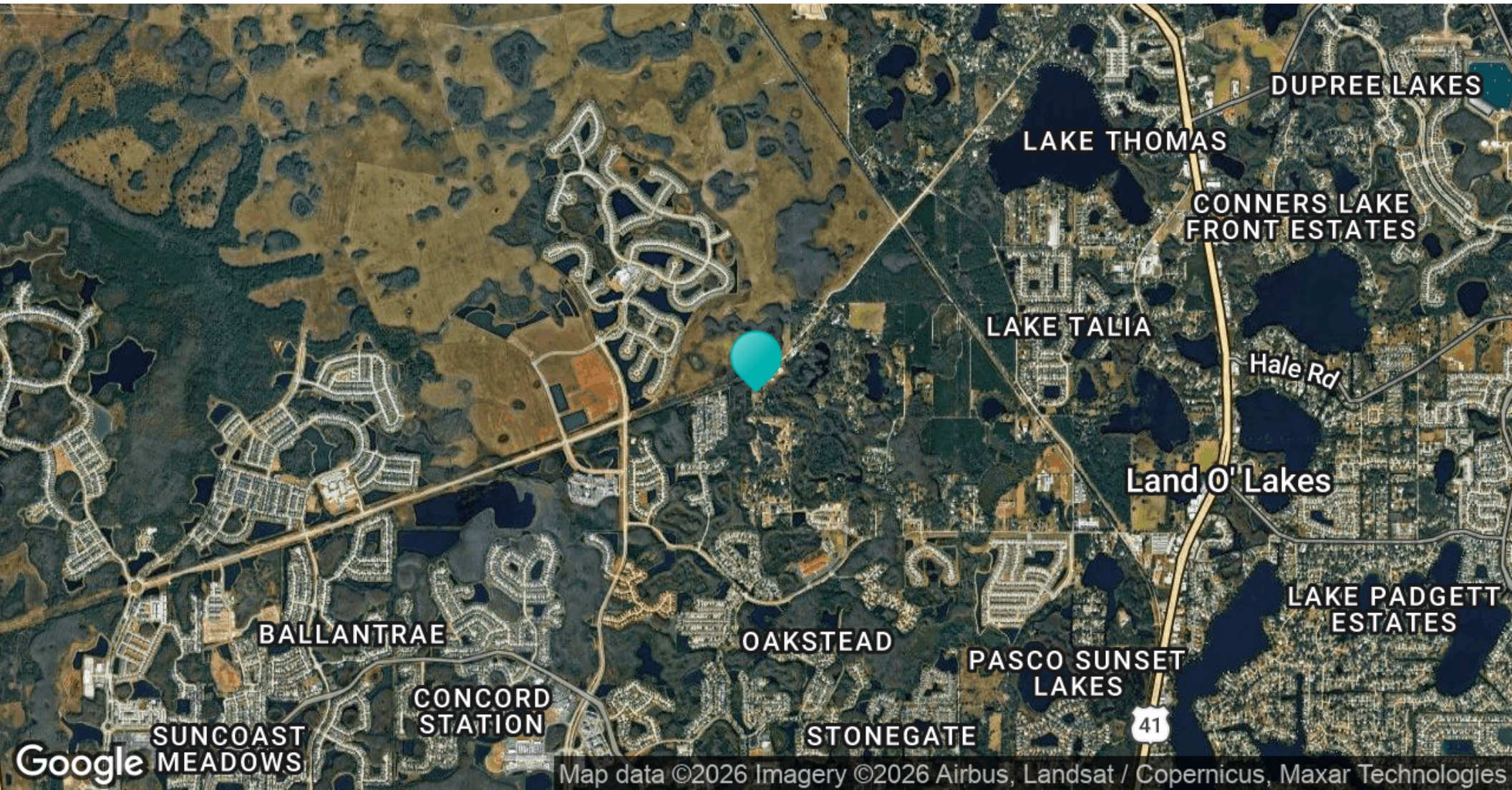
Tower Road

Joy Drive

Regional Map



Location Map



Confidentiality & Disclaimer

All materials and information received or derived from Eshenbaugh Land Company, LLC its directors, officers, agents, advisors, affiliates and/or any third party sources are provided without representation or warranty as to completeness, veracity, or accuracy, condition of the property, compliance or lack of compliance with applicable governmental requirements, developability or suitability, financial performance of the property, projected financial performance of the property for any party's intended use or any and all other matters.

Neither Eshenbaugh Land Company, LLC its directors, officers, agents, advisors, or affiliates makes any representation or warranty, express or implied, as to accuracy or completeness of the any materials or information provided, derived, or received. Materials and information from any source, whether written or verbal, that may be furnished for review are not a substitute for a party's active conduct of its own due diligence to determine these and other matters of significance to such party. Eshenbaugh Land Company, LLC will not investigate or verify any such matters or conduct due diligence for a party unless otherwise agreed in writing. EACH PARTY SHALL CONDUCT ITS OWN INDEPENDENT INVESTIGATION AND DUE DILIGENCE.

Any party contemplating or under contract or in escrow for a transaction is urged to verify all information and to conduct their own inspections and investigations including through appropriate third party independent professionals selected by such party. All financial data should be verified by the party including by obtaining and reading applicable documents and reports and consulting appropriate independent professionals. Eshenbaugh Land Company, LLC makes no warranties and/or representations

regarding the veracity, completeness, or relevance of any financial data or assumptions. Eshenbaugh Land Company, LLC does not serve as a financial advisor to any party regarding any proposed transaction. All data and assumptions regarding financial performance, including that used for financial modeling purposes, may differ from actual data or performance. Any estimates of market rents and/or projected rents that may be provided to a party do not necessarily mean that rents can be established at or increased to that level. Parties must evaluate any applicable contractual and governmental limitations as well as market conditions, vacancy factors and other issues in order to determine rents from or for the property.

Legal questions should be discussed by the party with an attorney. Tax questions should be discussed by the party with a certified public accountant or tax attorney. Title questions should be discussed by the party with a title officer or attorney. Questions regarding the condition of the property and whether the property complies with applicable governmental requirements should be discussed by the party with appropriate engineers, architects, contractors, other consultants and governmental agencies. All properties and services are marketed by Eshenbaugh Land Company, LLC in compliance with all applicable fair housing and equal opportunity laws.

Eshenbaugh Land Company is a licensed real estate brokerage firm in Florida and William A. Eshenbaugh is the broker of record.

Bexley
1,700+ Planned
Residential Units

Tower Road



15.1±
Acres

Joy Drive

Your Advisors



Josh Streitmatter
Advisor
813.287.8787 x113
josh@thedirtdog.com



Richie Timmons
Advisor
813.287.8787 x116
richie@thedirtdog.com

Questions | Give us a call or drop us an email



www.thedirtdog.com