

FOR LEASE | INDUSTRIAL BUILDING WITH OUTDOOR STORAGE

592 THORPE ROAD
ORLANDO, FL 32824



AVAILABLE SEPTEMBER 1, 2026

PROPERTY OVERVIEW

TOTAL BUILDING:	±8,840 SF
LAND SIZE:	±2.41 Acres
CLEAR HEIGHT:	±18'
LOADING:	Three (3) Drive-In Doors (12'W x 16'H)
YEAR BUILT:	2000
LEASE RATE:	Contact Broker
OPEX:	\$5,254.20/Month

LOCATION

Located just minutes from Orlando International Airport (MCO), the site is well-suited for air freight, aviation support services, and time-sensitive distribution operations. Additionally, the property provides convenient access to both the Florida Turnpike and State Road 528 (Beachline Expressway), two of Central Florida's primary arterial highways. This strategic positioning enables efficient regional and statewide distribution, seamless connectivity to Interstate networks, and direct routes to Port Canaveral, making it an ideal hub for companies requiring strong multimodal transportation access.

CONTACT:

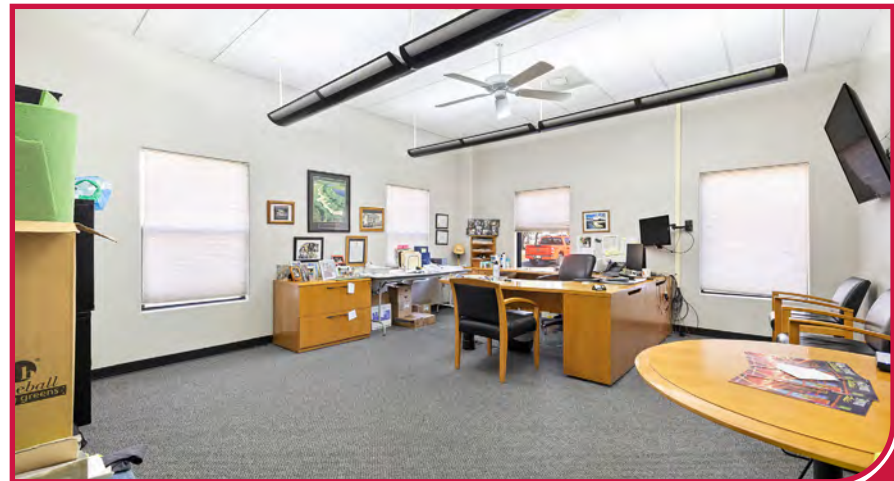
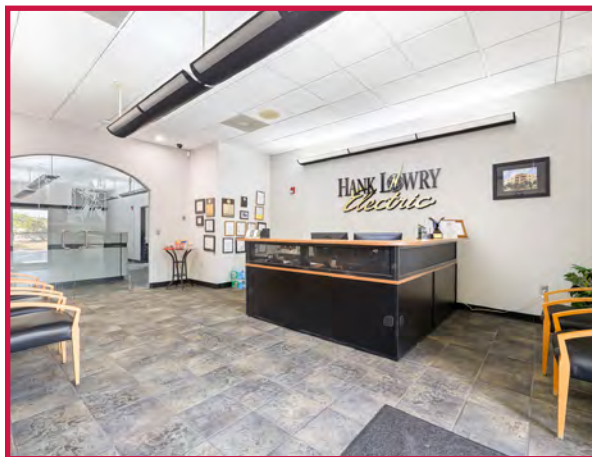
Christopher "CJ" Griffith
Vice President
cgriffith@lee-associates.com
D 321.281.8508

Ryan Griffith
Senior Vice President/Principal
rgriffith@lee-associates.com
D 321.281.8512

All information furnished regarding property for sale, rental or financing is from sources deemed reliable, but no warranty or representation is made to the accuracy thereof and same is submitted to errors, omissions, change of price, rental or other conditions prior to sale, lease or financing or withdrawal without notice. No liability of any kind is to be imposed on the broker herein.

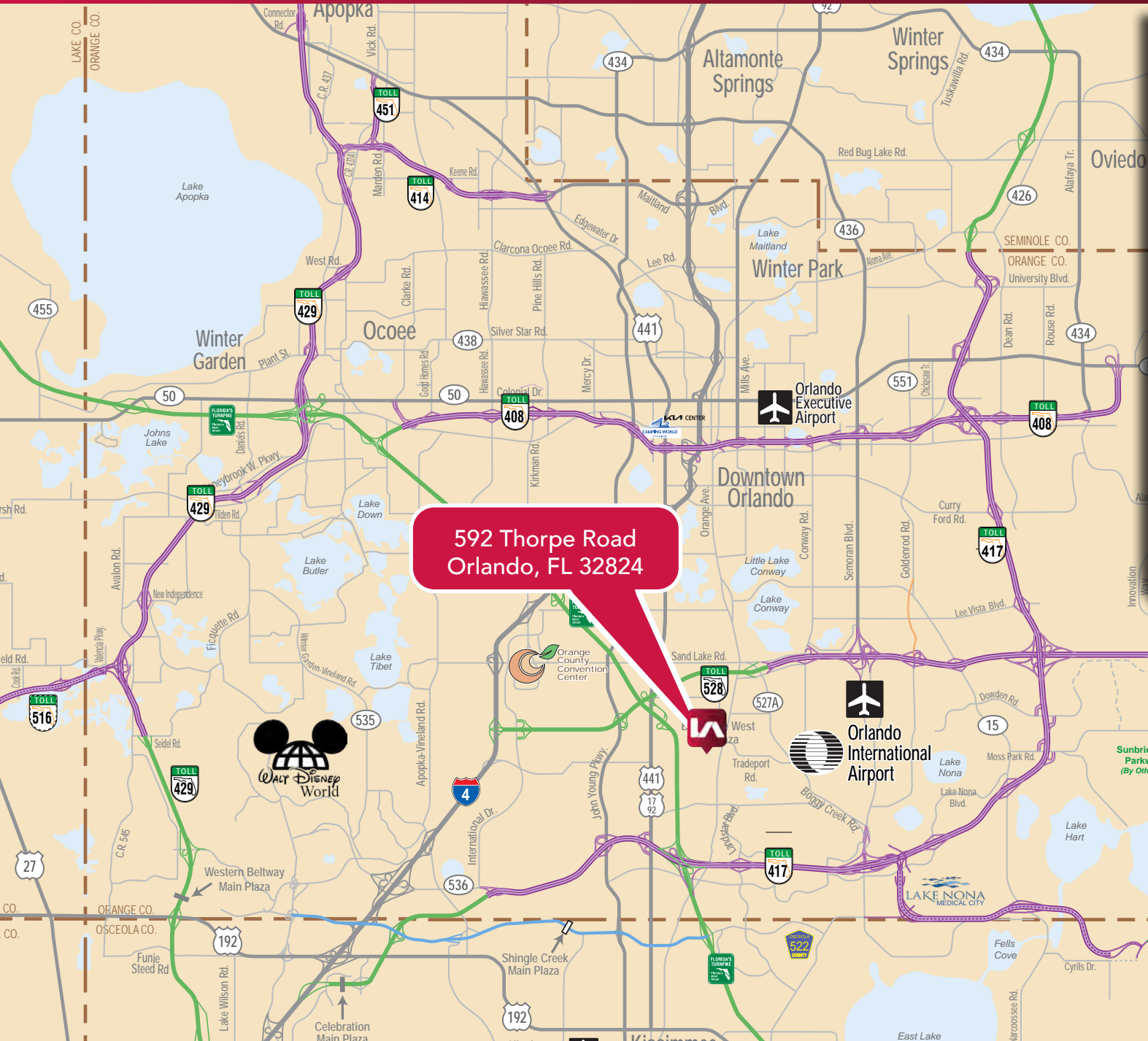


*Gravel area shown is a conceptual rendering.
Improvements are underway.*





FLOOR PLAN | 592 THORPE ROAD, ORLANDO, FL 32824



**592 Thorpe Road
Orlando, FL 32824**

State Road 528
1.4 Miles

Florida Turnpike
2.8 Miles

Orlando Int. Airport
7.8 Miles

State Road 417
12 Miles



For more information, please contact one of the following individuals:

CONTACT:

Christopher "CJ" Griffith
Vice President
cgriffith@lee-associates.com
D 321.281.8508

Ryan Griffith
Senior Vice President/Principal
rgriffith@lee-associates.com
D 321.281.8512