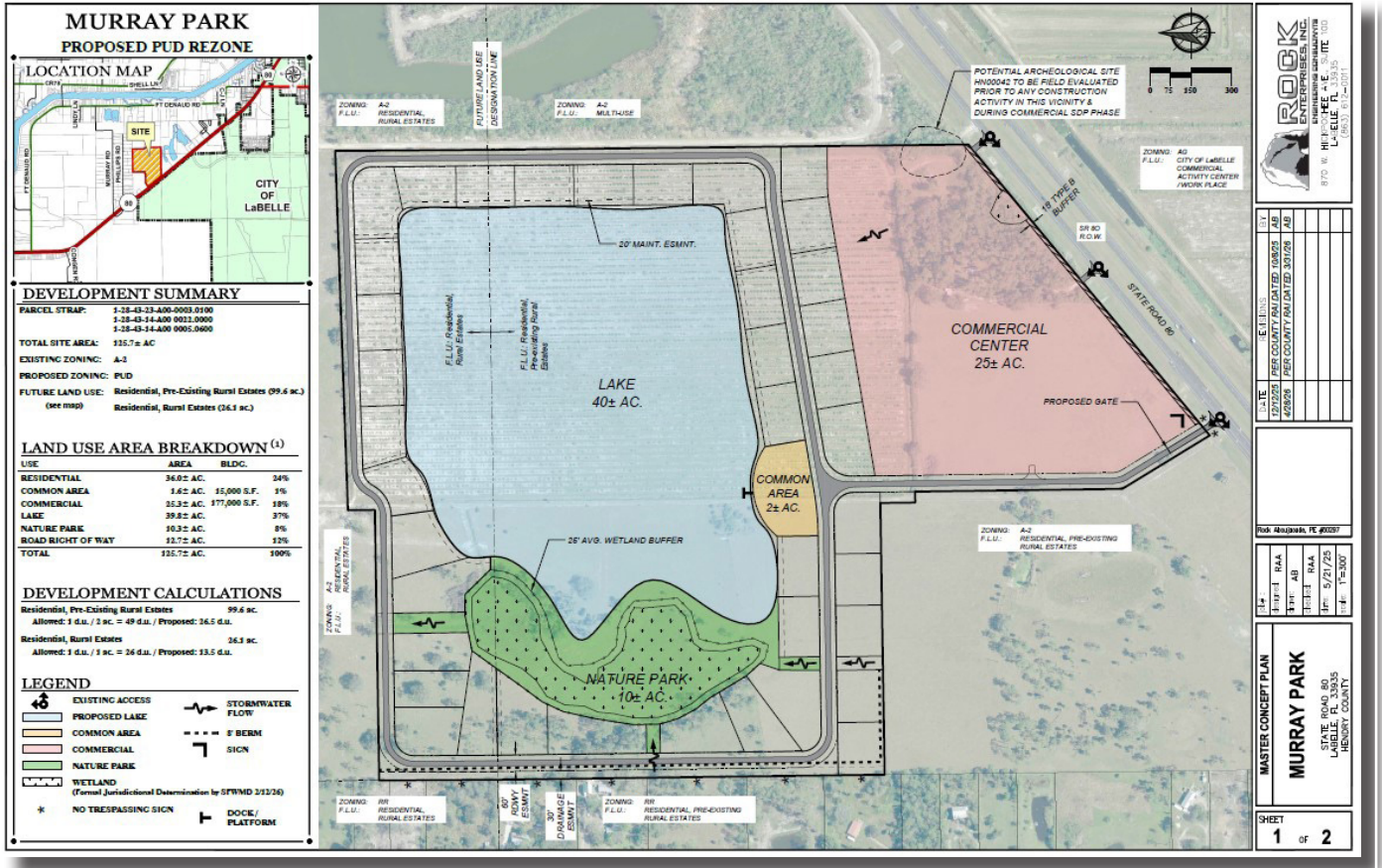


125.7± Acre Development Opportunity Murray Park / Proposed PUD LaBelle, FL



LOCATION: SR 80 West, Labelle, FL 33935
2.1± miles to LaBelle, 20.3± miles to I-75 / Fort Myers

STRAP #: 1-28-43-23-A00-0003.0100; 1-28-43-14-A00-0022.0000;
1-28-43-14-A00-0005.0600

ZONING: PUD - Planned Unit Development

SIZE: 125.7± acres

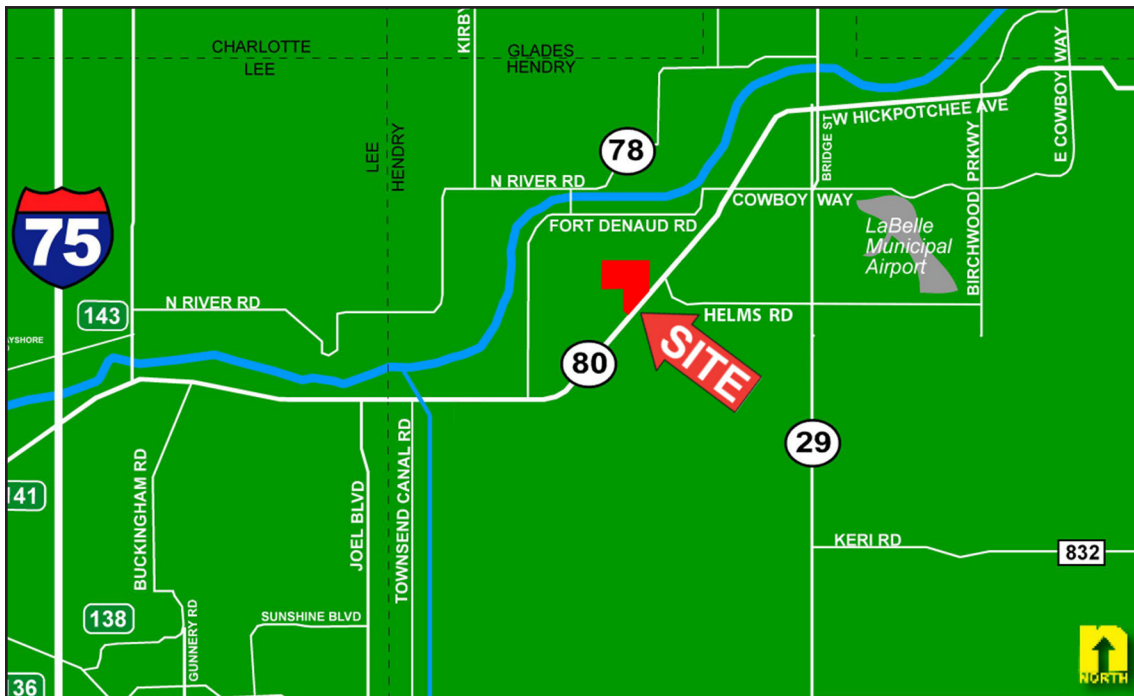
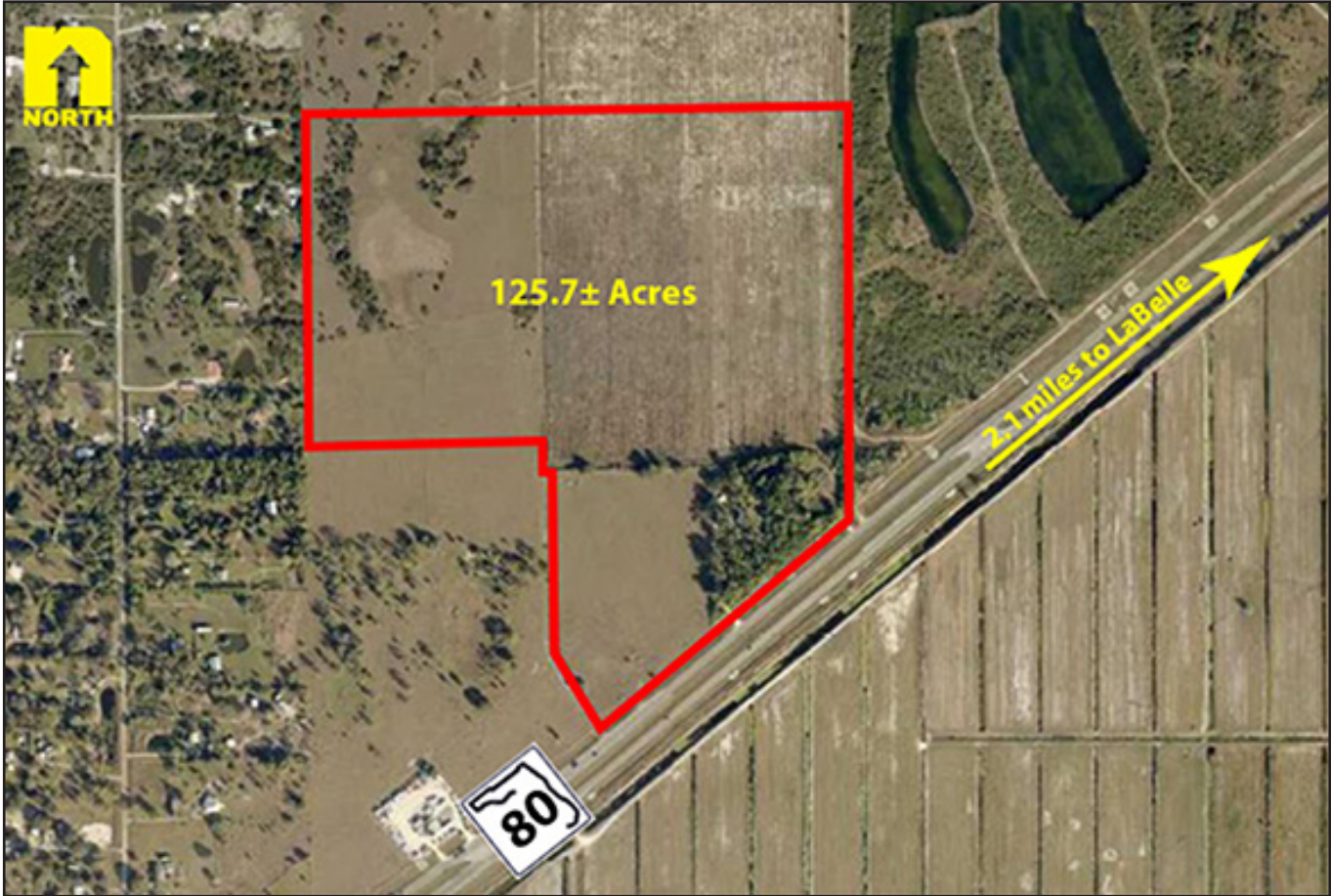
PRICE: \$13,900,000

COMMENTS: Murray Park commercial and residential upscale development. 1,381± feet commercial frontage with three access points on State Road 80. Planned Unit Development zoning (PUD) includes 25± acres of commercial and 40 residential lots with 19 lots along the lake and the balance along the preserve area. The 40± acre lake contains approximately 1.5 million cubic yards of material available for sale as well as for fill dirt and road construction for the development. The 10-acre nature park provides excellent green space and privacy. The commercial parcel and the package of 40 residential lots may be sold separately.

CONTACT: TOM WOODYARD
PHONE: (239) 425-6011
E-MAIL: twodyard@wa-cr.com

The statements and figures presented herein, while not guaranteed, are secured from sources we believe authoritative. Subject to prior sale, lease, withdrawal and price change without notice.

SR 80 West, LaBelle, FL 33935



The statements and figures presented herein, while not guaranteed, are secured from sources we believe authoritative. Subject to prior sale, lease, withdrawal and price change without notice.