

FOR LEASE



BALDWIN EAST OFFICE SPACE

1300-1320 N Semoran Blvd, Orlando, FL 32807

AVAILABLE SPACE

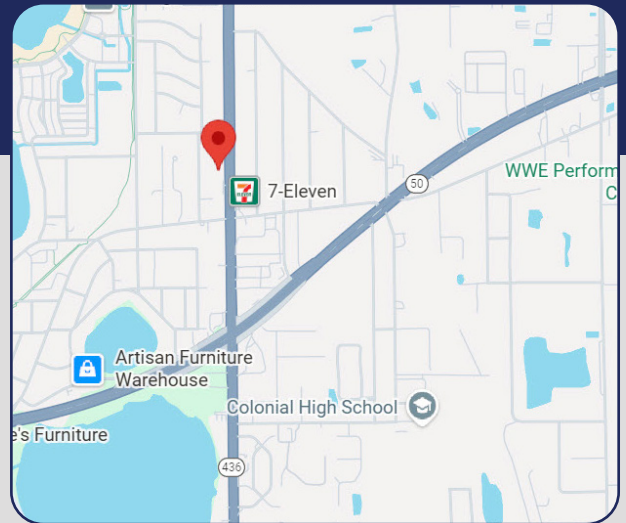
1300 BUILDING - 30,261 TOTAL RSF

Suite 130	475 RSF
Suite 170	342 RSF
Suite 210	1,149 RSF
Suite 211	688 RSF
Suite 225	1,477 RSF

1320 BUILDING - 27,991 TOTAL RSF

Suite 202	868 RSF
Suite 205	3,007 RSF (medical space)

- > Move-in ready suites
- > Full-service leases include janitorial, utilities, and maintenance
- > Outstanding parking - 4:1, included in rent
- > Excellent access via SR 436, Colonial Drive, and Baldwin Park
- > Professionally managed
- > Monument and directory signage
- > **\$21.75/RSF - \$22.75/RSF**



Scott Williamson
 D 407.373.6828
 C 407.947.6232
 scott@bywater.com

Bill Bywater, CCIM
 D 407.206.5736
 O 407.206.7300
 bill@bywater.com



1209 Edgewater Drive
 Suite 100
 Orlando, FL 32804
 407.206.7300 Main
 www.bywater.com

BALDWIN EAST OFFICE SPACE

1300-1320 N Semoran Blvd, Orlando, FL 32807



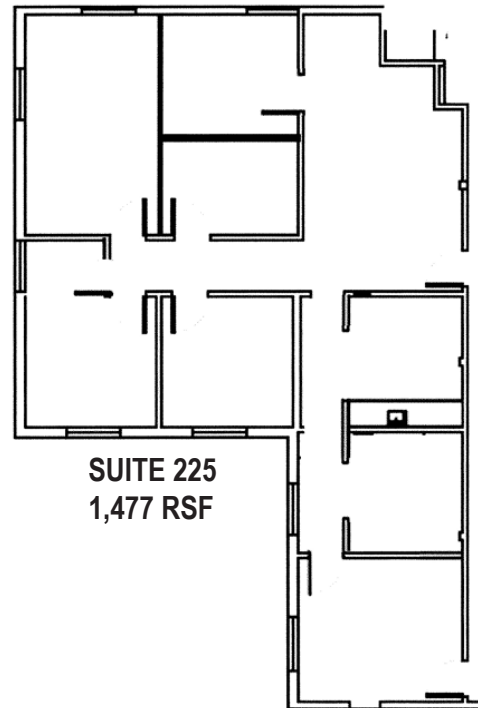
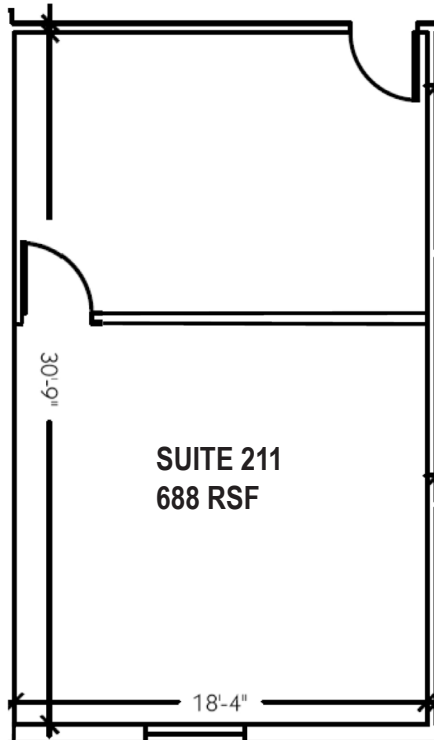
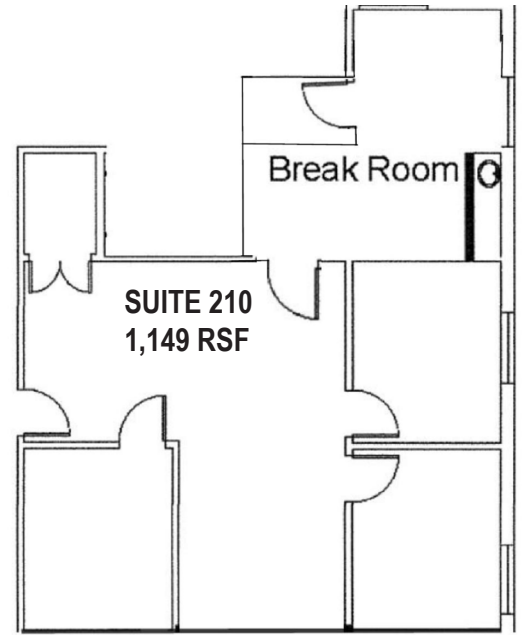
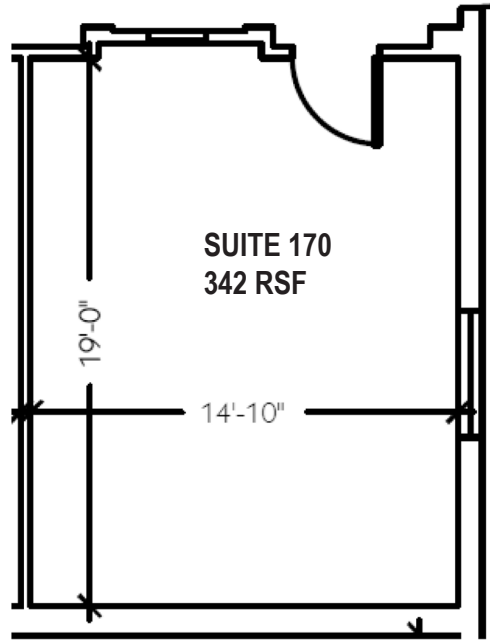
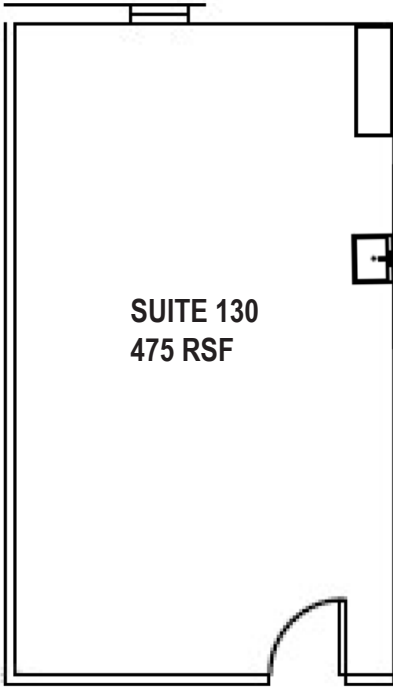
1209 Edgewater Drive, Suite 100 | Orlando, FL 32804 | 407.206.7300 | www.bywater.com

The information contained herein was obtained from sources deemed reliable and is assumed to be correct. It is not guaranteed by The Bywater Company.

BALDWIN EAST OFFICE SPACE

1300-1320 N Semoran Blvd, Orlando, FL 32807

1300 BUILDING FLOOR PLANS



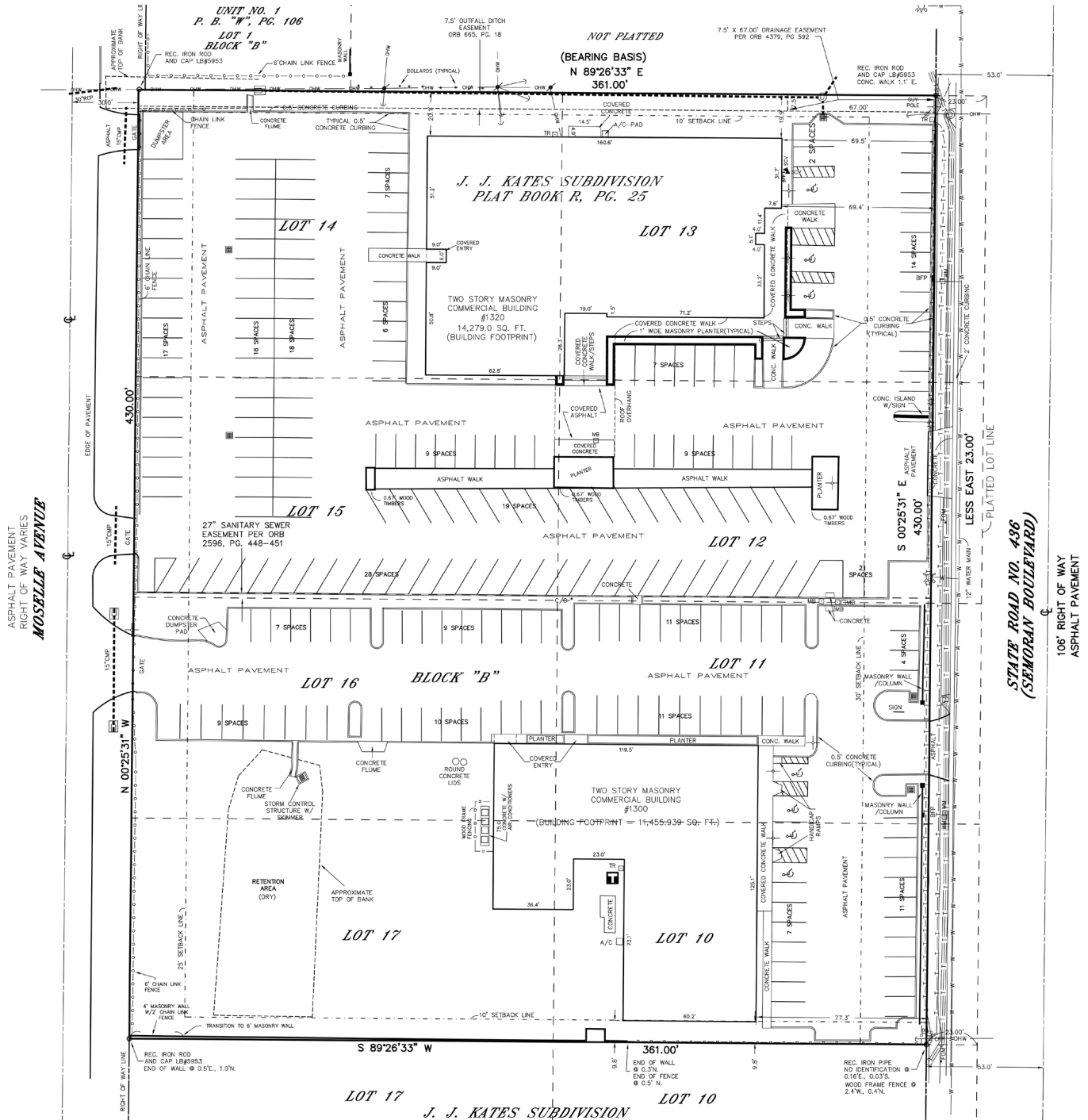
1209 Edgewater Drive, Suite 100 | Orlando, FL 32804 | 407.206.7300 | www.bywater.com

The information contained herein was obtained from sources deemed reliable and is assumed to be correct. It is not guaranteed by The Bywater Company.

BALDWIN EAST OFFICE SPACE

1300-1320 N Semoran Blvd, Orlando, FL 32807

SURVEY



RIC
SU
1.



1209 Edgewater Drive, Suite 100 | Orlando, FL 32804 | 407.206.7300 | www.bywater.com

The information contained herein was obtained from sources deemed reliable and is assumed to be correct. It is not guaranteed by The Bywater Company.