



Pembroke Commons

1800 Pembroke Drive, Orlando, Florida 32810

Building Features

- Class 'A', 4-story, 115,714± RSF office building with beautiful two-story atrium
- Great location in Maitland Center, Orlando's premier office park
- Ample surface parking: 5/1,000 RSF; Multiple restaurants in close proximity
- Immediately adjacent to Maitland Boulevard (SR 414) and across from Orlando Sportsplex
- Very close to I-4 - approximately 1 mile via updated Maitland Boulevard - allows access to Downtown Orlando and the entire Orlando MSA
- Convenient access to SR 414 (Maitland Blvd), I-4, US Hwy 17-92, SR 436 (Semoran Blvd), SR 434 and other major roadways
- Well maintained and attractive property with on-site leasing and property management
- Fiber internet at building - provider is Lumen

Available Spaces			
Suite	RSF	Rate PSF	Available
240	4,515	\$24.00	Now
250	2,255	\$24.00	08/01
4th Floor	2,958*	\$25.50	Now
4th Floor	9,734*	\$25.50	Now

*These two suites can be combined

Lease Rate
from \$24.00/RSF Full Service



For more information:

Mary Frances West, CCIM

+1 407 949 0725 | mfwest@realvest.com

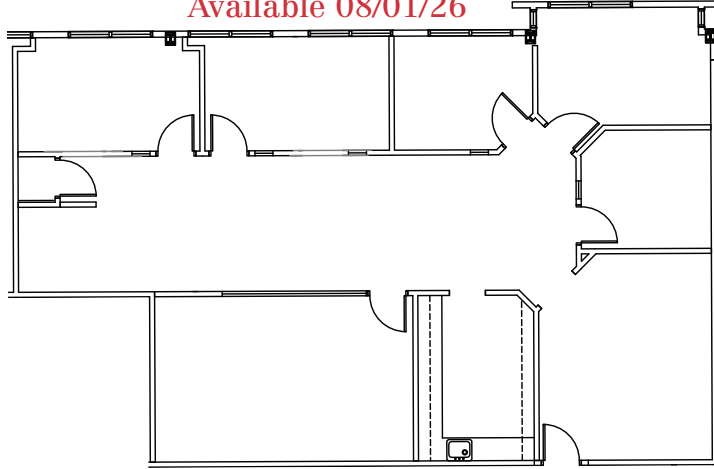
Tom R. Kelley II, CCIM

+1 407 949 0715 | tkelley@realvest.com

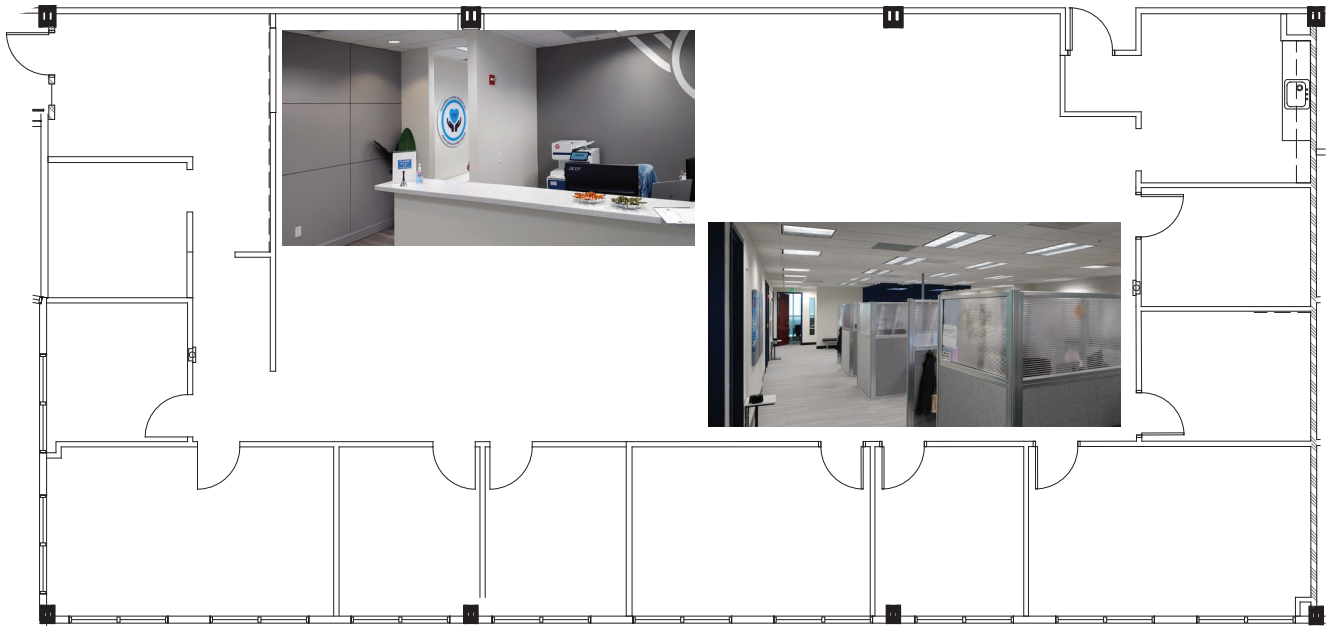
1800 Pembroke Drive
Orlando, Florida 32810

Available Spaces
Maitland Center Office Space
Pembroke Commons

Suite 250 - 2,255± RSF
Available 08/01/26



Suite 240 - 4,515± RSF

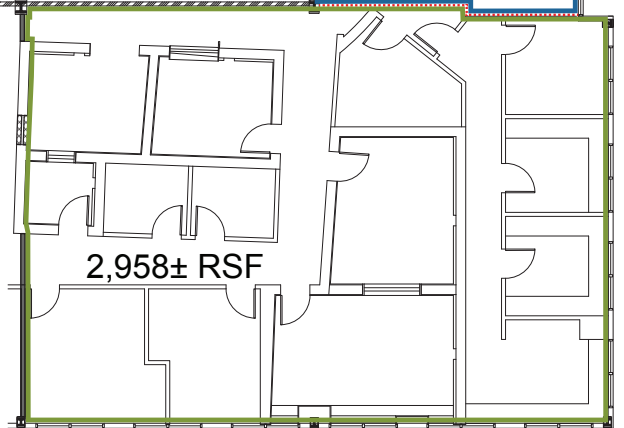
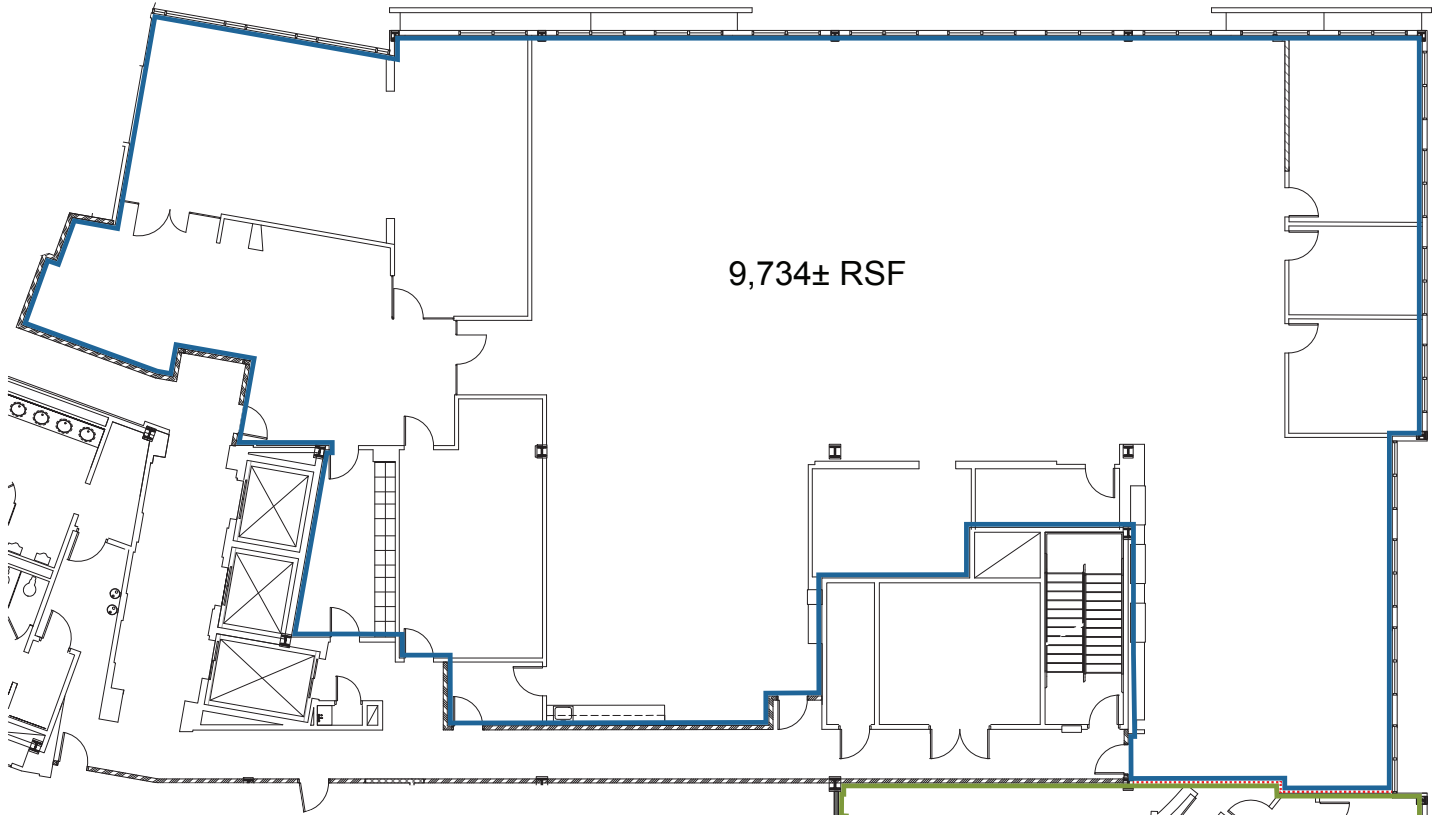


1800 Pembroke Drive
Orlando, Florida 32810

Available Spaces
Maitland Center Office Space
Pembroke Commons

4th Floor Available Spaces - 9,734± RSF & 2,958± RSF*

*Spaces Can Be Combined



1800 Pembroke Drive
Orlando, Florida 32810

Orlando MSA Maitland Center Office Space Pembroke Commons

