



AVISON
YOUNG

Plaza Del Prado

Medical and Professional Office - 140 North Westmonte Drive, Altamonte Springs, Florida 32714

David Hungerford, CCIM, SIOR
Senior Advisor
863-660-3138
david@saundersrealestate.com

Joey Hungerford, MiCP
Associate Advisor
863-660-3511
joey@saundersrealestate.com

Bill Nguyen
Vice President
407-304-0553
bill.nguyen@avisonyoung.com

ALTAMONTE MALL



RAMADA BY WYNDHAM

63,000 Cars/Day

179,000 Cars/Day



Residence INN BY MARRIOTT



Westmonte Dr



WHOLE FOODS MARKET | petco | DSW | SAGE DENTAL | PGA TOUR SUPERSTORE | chili's

FIVE GUYS | Denny's | CHICK-FIL-EE'S | PANDA EXPRESS

Total Wine & MORE | Burlington | ROSS DRESS FOR LESS | AMFEB FITNESS | LAYTON SPORTS CARDS

E Altamonte Dr



TABLE OF CONTENTS



Table of Contents

Full Bleed Photo	2
Property Information	4
Executive Summary	5
Lease Spaces	6
Suite 2100 & 2300	7
Suite 2200	8
Location Information	9
Regional Map	10
Location Map	11
Demographics Map & Report	12
Market Area Map	13
Trade Area Map	14
Agent And Company Info	15
Advisor Bio	16
Advisor Bio	17
Advisor Bio	18
About Avison Young	19



Westmonte Dr

SECTION 1

Property Information

EXECUTIVE SUMMARY



Offering Summary

Building Size:	14,514 ± SF
Available SF:	1,931 - 6,317 ± RSF
Lot Size:	1.02 Acres
Year Built:	1982
Renovated:	2021
Parking Spaces:	63 Total Spaces*
Parking Ratio:	4.34 spaces per 1,000 SF
Zoning:	GO - General Office
County:	Seminole
City:	Altamonte Springs
PIN:	1421295100A000020

Property Overview

Discover an exceptional opportunity for your business at **140 North Westmonte Drive** in the thriving Altamonte Springs market. The building was completely remodeled in 2021, providing a modern and professional setting. Optum Health occupies the bottom floor and a portion of the second floor, leaving three vacant units to be leased on the second floor. With a monument sign available for tenant use, your business will gain high visibility to passing traffic. The units are in vanilla shell condition, with a Tenant Improvement allowance potentially available for negotiation, allowing you to design the perfect layout for your needs.

Located just off Altamonte Drive and minutes from the nearest I-4 interchange, the property provides easy access for both clients and employees. The immediate area is a vibrant commercial hub, anchored by the popular Altamonte Mall and surrounded by a wide variety of retailers and amenities. This outstanding location and the flexibility of the space make it an ideal choice for medical, professional, or corporate tenants seeking to establish or expand their presence.

**Optum Health has 8 reserved parking spaces in rear of building*

LEASE SPACES

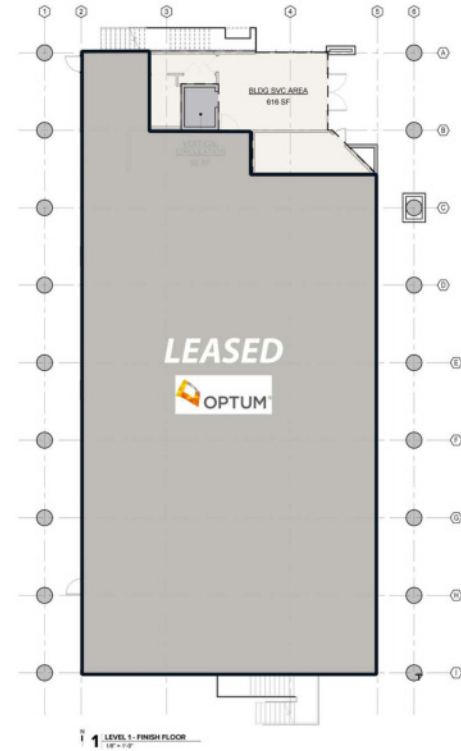
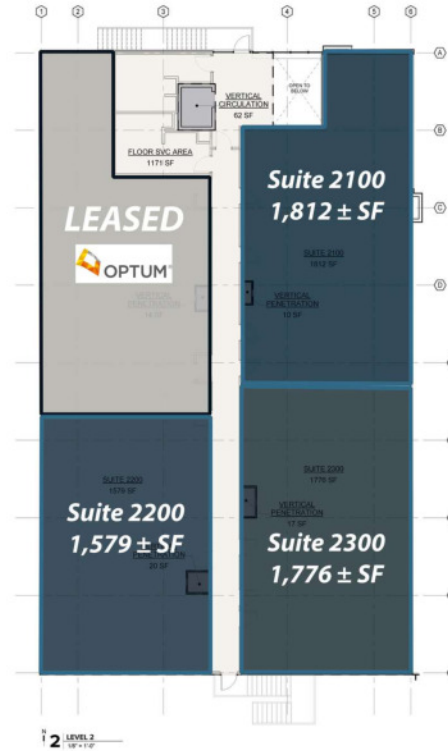
Available Spaces

Suite Tenant Size (RSF) Lease Type Lease Rate Description

Suite 2100	Available	2,215 SF	NNN	Contact Broker	Vanilla Shell, TI negotiable, 1,812 Usable SF
Suite 2200	Available	1,931 SF	NNN	Contact Broker	Vanilla Shell, TI negotiable, 1,579 Usable SF
Suite 2300	Available	2,171 SF	NNN	Contact Broker	Vanilla Shell, TI negotiable, 1,776 Usable SF
Suite 1000	-	5,754 SF	NNN	Leased	Optum
Suite 2000	-	1,775 SF	NNN	Leased	Optum

TOTAL BUILDING GROSS	14,686 SF
SUITE 1000 RENTABLE AREA	6,013 SF
SUITE 2000 RENTABLE AREA	2,170 SF
SUITE 2100 RENTABLE AREA	2,215 SF
SUITE 2200 RENTABLE AREA	1,931 SF
SUITE 2300 RENTABLE AREA	2,171 SF

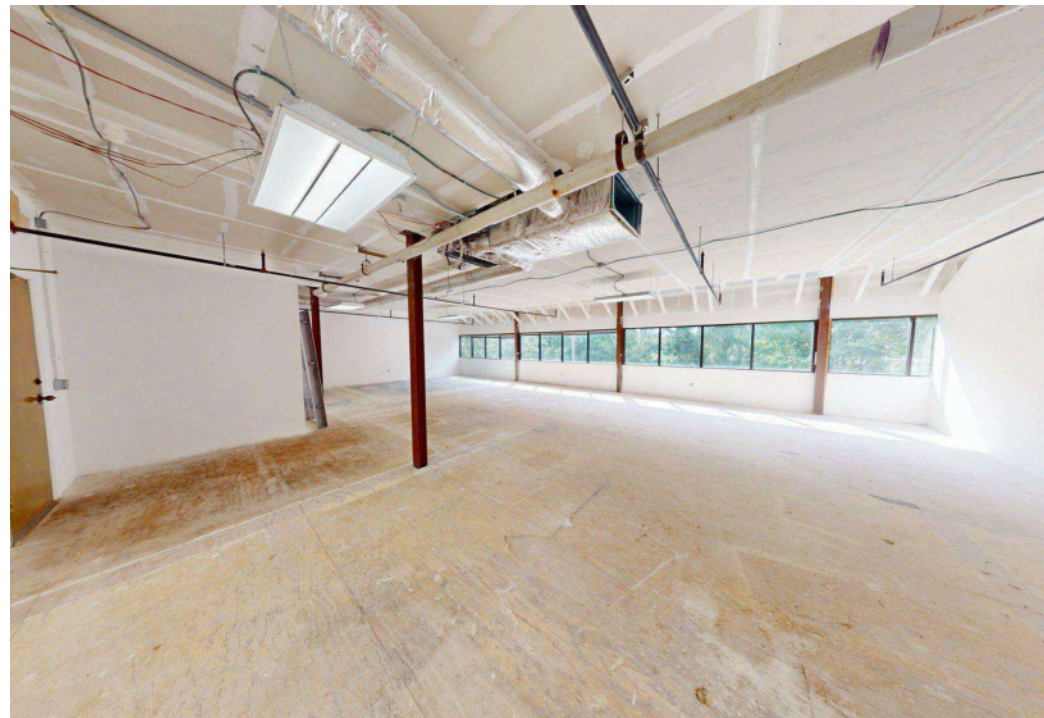
AREA CALCULATED PER BIRM 2010 FOR OFFICE BUILDINGS USING THE FOLLOWING METHODS OF MEASUREMENT: INTERIOR PER 2000 NETWORK



SUITE 2100 & 2300



SUITE 2200



DOWNTOWN ORLANDO
14 ± MINUTES

**179,000
Cars/Day**



**Stonebridge Lakes
Condominium**



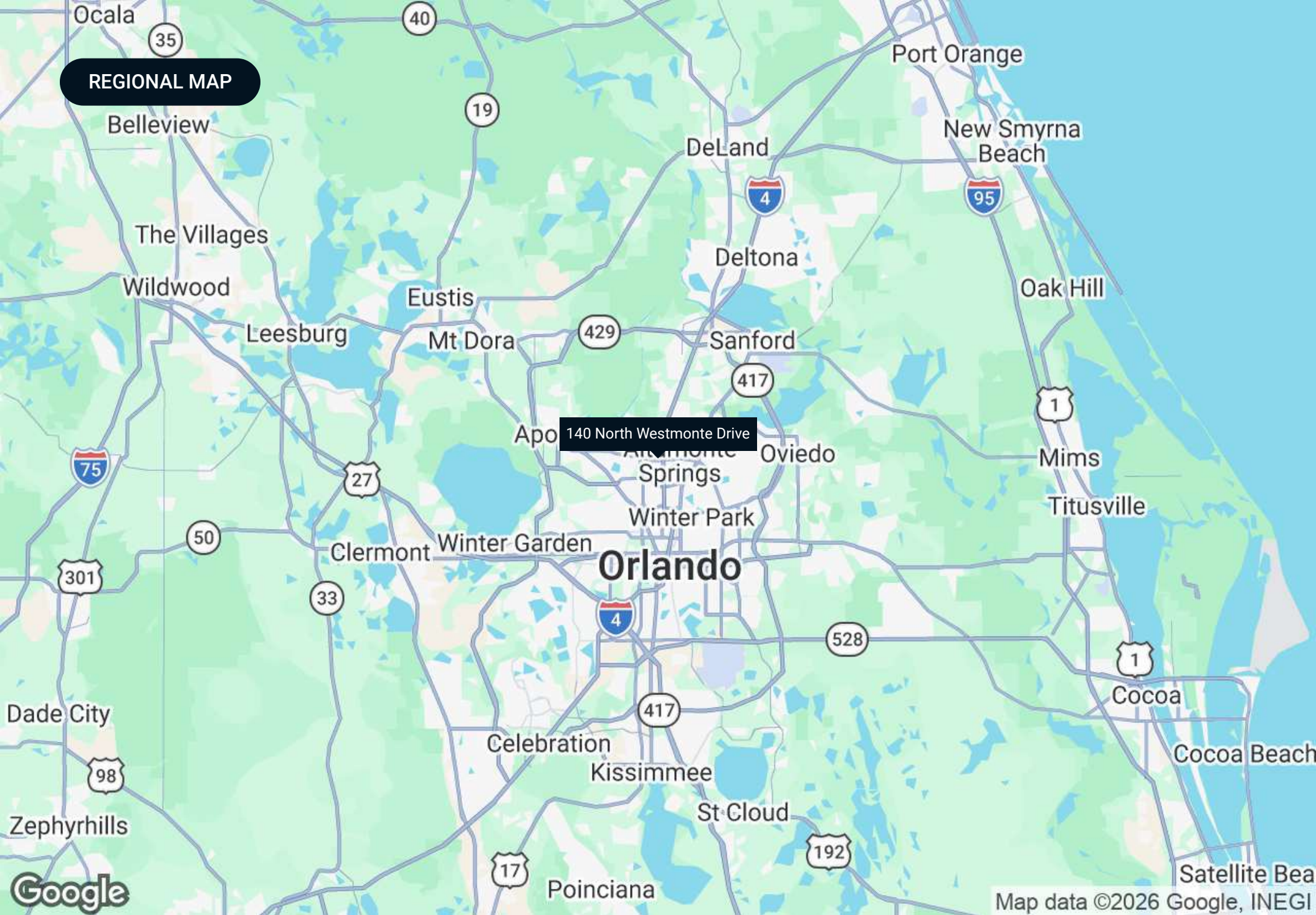
E Altamonte Dr

Westmonte Dr



SECTION 2

Location Information



REGIONAL MAP

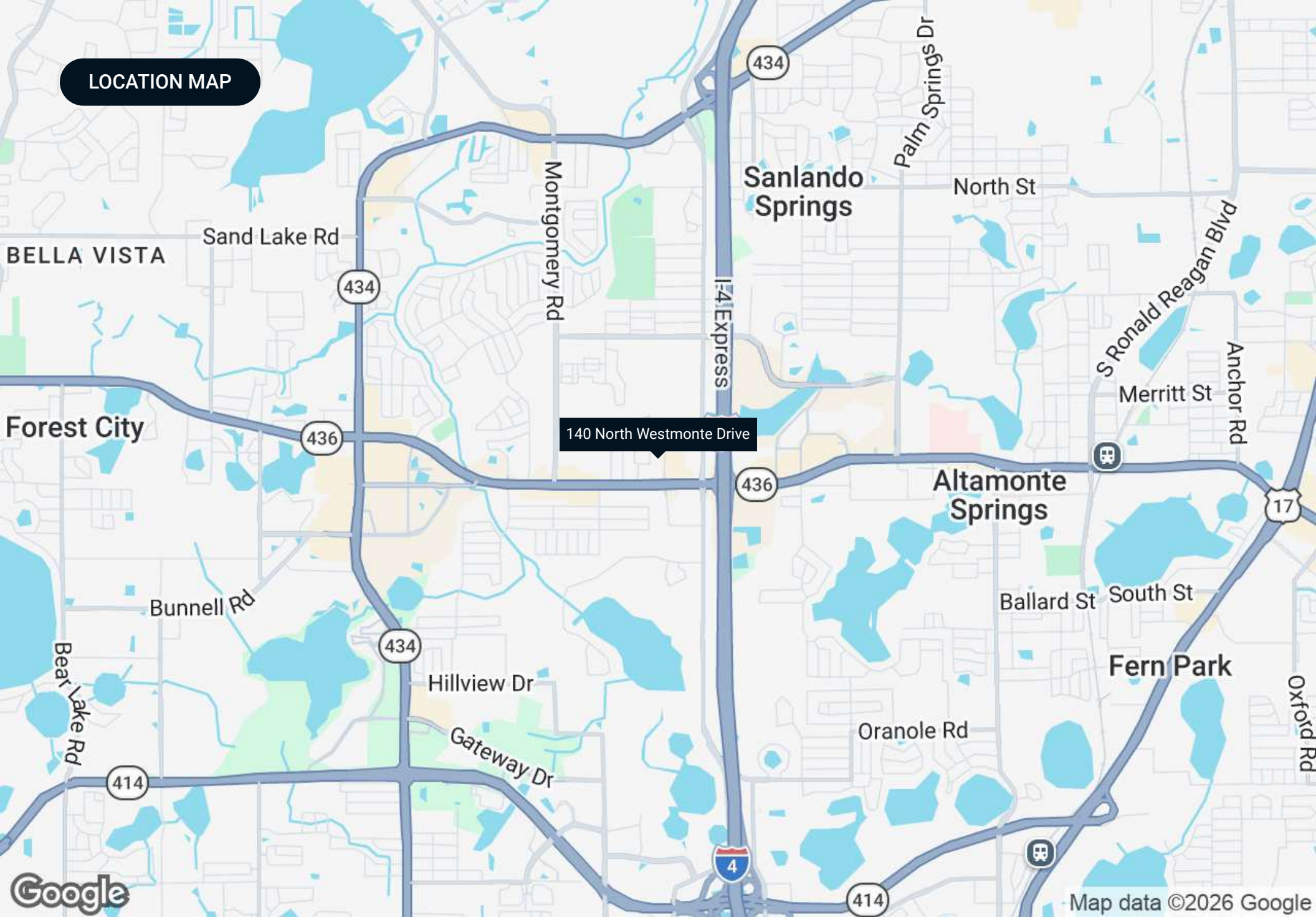
140 North Westmonte Drive

Orlando



Map data ©2026 Google, INEGI

LOCATION MAP



DEMOGRAPHICS MAP & REPORT

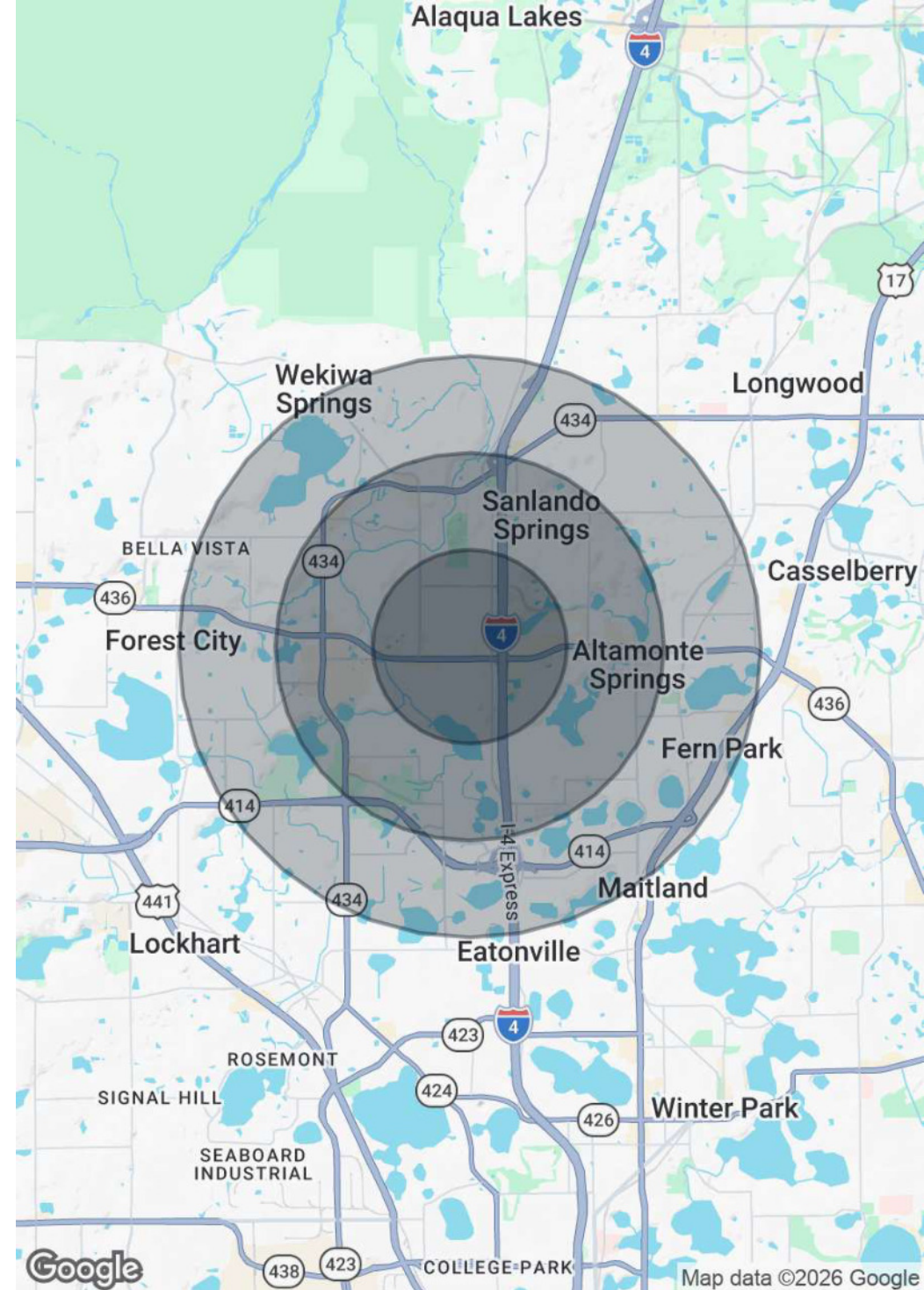
Population

	1 Mile	2 Miles	3 Miles
Total Population	15,774	51,417	97,297
Average Age	41	42	42
Average Age (Male)	39	40	40
Average Age (Female)	42	43	43

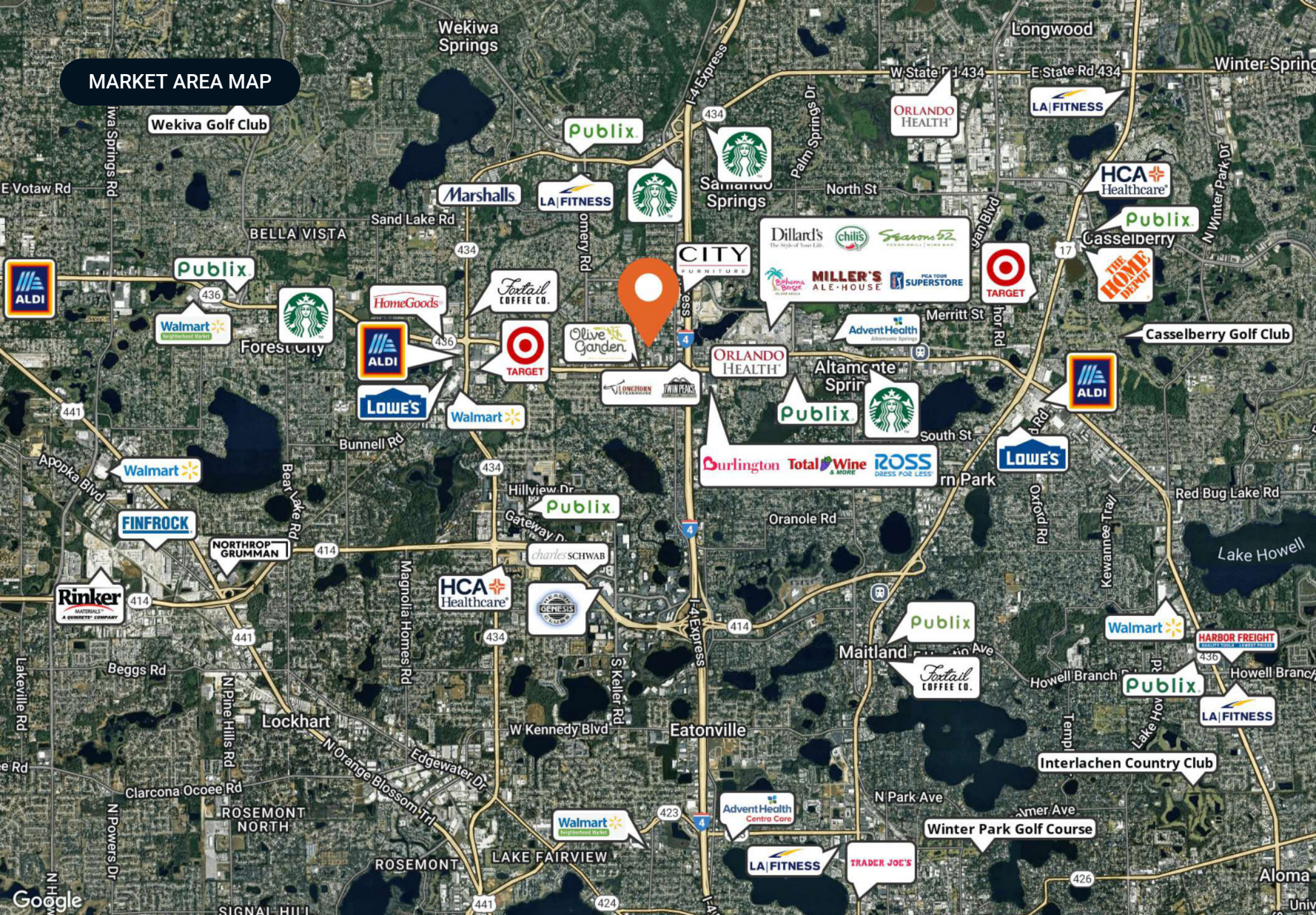
Households & Income

	1 Mile	2 Miles	3 Miles
Total Households	7,116	22,763	41,992
# of Persons per HH	2.2	2.3	2.3
Average HH Income	\$79,105	\$88,059	\$94,231
Average House Value	\$390,020	\$369,984	\$396,158

2020 American Community Survey (ACS)



MARKET AREA MAP





SECTION 3

Agent And Company Info

ADVISOR BIO



David Hungerford, CCIM, SIOR

Senior Advisor

david@saundersrealestate.com

Direct: **877-518-5263 x347** | Cell: **863-660-3138**

Professional Background

David Hungerford, MBA, CCIM, SIOR is a Senior Advisor at Saunders Real Estate.

The firm serves as the premier commercial services provider of Central Florida. Throughout his career, David has closed on more than \$250 million across nearly all types of commercial properties and development land. David is a mapping and GIS specialist within the firm and formerly served as the firm's Director of Research. He prides himself on solving complex problems for his clients and stakeholders.

David graduated Cum Laude from Florida State University in Tallahassee, FL. He obtained a Bachelor of Science degree in real estate, a Bachelor of Science degree in finance, and a minor in Italian studies/language. While at FSU, he was an active member of the Florida State University Real Estate Society. David would later graduate with his Master's in Business Administration from Florida Southern College in Lakeland, FL where he was admitted into Beta Gamma Sigma and admitted as an adjunct real estate instructor.

David is an SIOR (Society of Industrial and Office Realtors) and a CCIM (Certified Commercial Investment Member) designee and has served in numerous leadership roles for the CCIM Florida West Coast District, including as President in 2024. He has experience as an expert witness in all subjects of property valuation and leasing.

David is a member of the Lakeland Association of Realtors® and has served on its Board of Directors and finance committee. He is also an active member of The International Council of Shopping Centers (ICSC). David is married and lives with his wife Aimee and children Eliana, Ezra, and Shepherd on a small farm in Lakeland, FL. They are proud members of Access Church.

David specializes in:

- Development Properties
- Industrial Properties
- Commercial Properties
- Real Estate Analytics

ADVISOR BIO



Joey Hungerford, MiCP

Advisor

joey@saundersrealestate.com

Direct: **877-518-5263 x348** | Cell: **863-660-3511**

Professional Background

Joey Hungerford, MiCP is an Associate Advisor at Saunders Real Estate.

Joey has a background in communications and political affairs, having served in various roles within the U.S. government. His prior posts include serving as the Communications Director for a Congresswoman in the United States House of Representatives, as Communications Advisor and Digital Director to the Chairman of the House Judiciary Committee, and as a personal travel videographer for the President of the United States of America.

Prior to relocating to Washington, D.C., Joey was born and raised in Lakeland, where he earned a Bachelor of Science degree in Communications, with an emphasis in Broadcasting, and a minor in Theology, from Southeastern University. During his academic tenure, Joey was an active student leader on campus and concurrently began his professional career at Saunders Real Estate within the marketing department.

Joey is an active member of Lakeland REALTORS®, where he earned the 2025 Commercial Realtor of the Year award. He also serves as Co-Chair of the Public Policy Committee and is a graduate of the association's Leadership Academy. In addition, Joey is a member of the International Council of Shopping Centers (ICSC), Emerge Lakeland, and the CCIM Florida West Coast District, where he serves on the Membership Committee. He is currently a CCIM Candidate working toward his designation.

With his unique career experience and unmatched work ethic, Joey takes pride in his ability to build meaningful relationships while delivering exceptional service to his clients.

Joey and his wife, Hope, are proud parents of two boys, Levi and Hudson. They are members of Together Church in Lakeland, where Joey leads a connect group.

Joey specializes in:

- Industrial
- Commercial Leasing
- Office
- Site Identification

ADVISOR BIO



Bill Nguyen

Vice President

bill.nguyen@avisonyoung.com

Direct: **407-440-6658** | Cell: **407-304-0553**

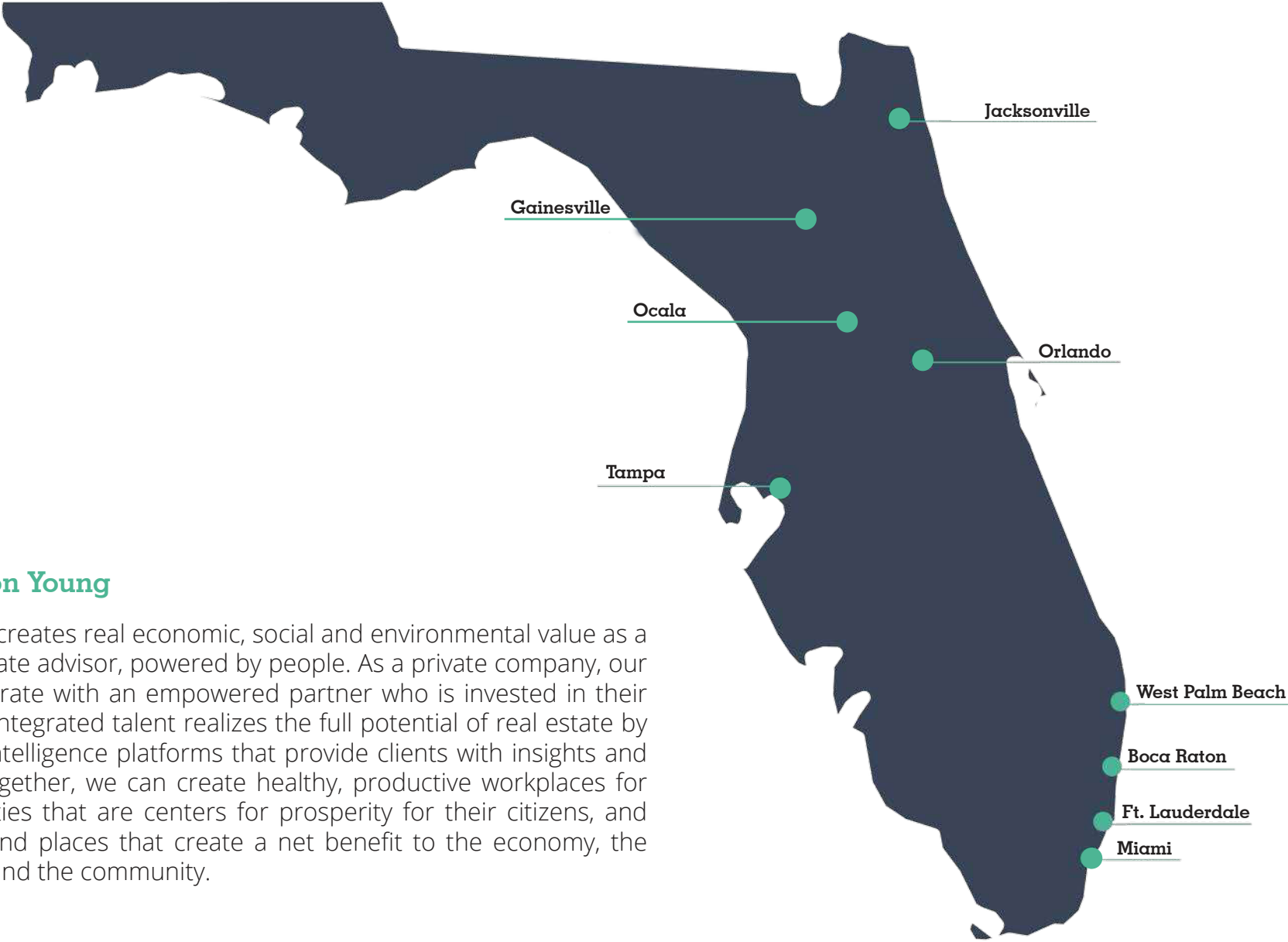
**AVISON
YOUNG**

Professional Background

Vuong Nguyen specializes in Retail and Office real estate, focusing primarily on Landlord and Seller Representation while also bringing experience in Tenant Representation. Previously recognized as Rookie of the Year at Saunders Real Estate, Vuong achieved over \$14 million in transaction volume within his second year in the industry. Among his notable accomplishments, he helped introduce one of the first Yemeni coffee shops from a national brand to Central Florida and facilitated a significant retail sale in the historic downtown Winter Garden area on Plant Street.

Vuong places paramount importance on building strong relationships with his clients. He is dedicated to understanding their personal and financial goals by listening closely and providing client-centered advice. With a deep understanding of property valuation, strong market knowledge, attention to detail, and a solid work ethic, he strives to deliver exceptional results for every client.

About Avison Young

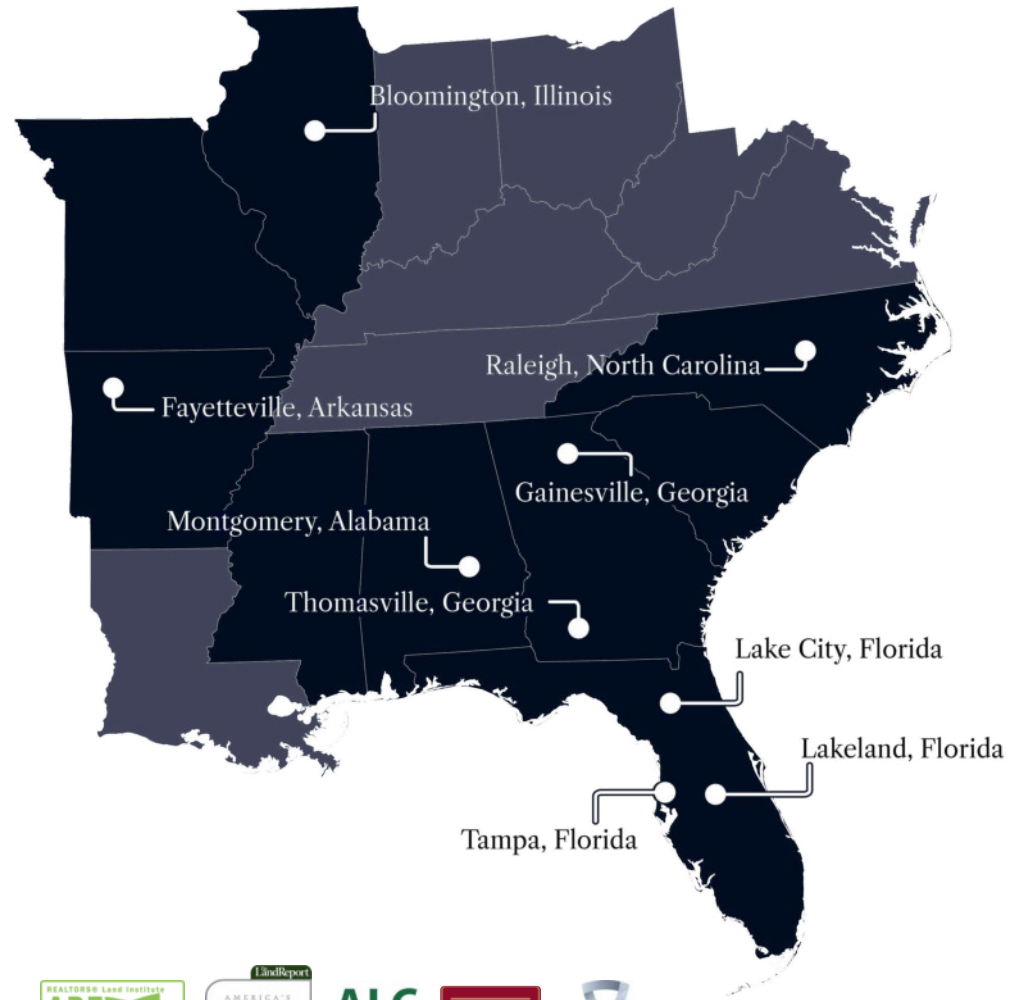


About Avison Young

Avison Young creates real economic, social and environmental value as a global real estate advisor, powered by people. As a private company, our clients collaborate with an empowered partner who is invested in their success. Our integrated talent realizes the full potential of real estate by using global intelligence platforms that provide clients with insights and advantage. Together, we can create healthy, productive workplaces for employees, cities that are centers for prosperity for their citizens, and built spaces and places that create a net benefit to the economy, the environment and the community.



At Saunders Real Estate, we deliver full-service real estate solutions, built on more than 30 years of trusted experience. Our dedicated teams offer tailored guidance backed by deep regional insight and a proven track record. We believe that successful outcomes start with strong relationships built on trust and a shared commitment to your goals.



877-518-5263 • info@saundersrealestate.com



©2026 Saunders Real Estate, LLC. All rights reserved. The information contained in this communication is strictly confidential. This information has been obtained from sources believed to be reliable but has not been verified. NO WARRANTY OR REPRESENTATION, EXPRESS OR IMPLIED, IS MADE AS TO THE CONDITION OF THE PROPERTY (OR PROPERTIES) REFERENCED HEREIN OR AS TO THE ACCURACY OR COMPLETENESS OF THE INFORMATION CONTAINED HEREIN, AND SAME IS SUBMITTED SUBJECT TO ERRORS, OMISSIONS, CHANGE OF PRICE, RENTAL OR OTHER CONDITIONS, WITHDRAWAL WITHOUT NOTICE, AND TO ANY SPECIAL LISTING CONDITIONS IMPOSED BY THE PROPERTY OWNER(S). ANY PROJECTIONS, OPINIONS OR ESTIMATES ARE SUBJECT TO UNCERTAINTY AND DO NOT SIGNIFY CURRENT OR FUTURE PROPERTY PERFORMANCE.