

# 4589 Henry C. Yates Lane

ST. CLOUD, FL 34769



---

FOR MORE INFORMATION  
[MILLENIA-PARTNERS.COM](http://MILLENIA-PARTNERS.COM)

---

PRESENTED BY

**ASHLEY WALKER**

407.430.3462

[awalker@millenia-partners.com](mailto:awalker@millenia-partners.com)

ST. CLOUD, FL 34769

# STNL Medical Office Investment Sale



## OFFERING SUMMARY

Sale Price:	\$1,525,000
Building Size:	3,800 SF
Cap Rate:	6.75%
NOI:	\$103,809.06
Market:	St. Cloud

## PROPERTY OVERVIEW

Introducing 4589 Henry C. Yates Lane, a prime investment opportunity in the heart of St. Cloud, FL. This 3,800 SF office building boasts a 100% occupancy with promising immediate returns for savvy investors. With a strategic location in the vibrant St. Cloud area, this property offers unparalleled potential for long-term growth and stability. Don't miss your chance to secure a valuable position in this thriving commercial real estate market.

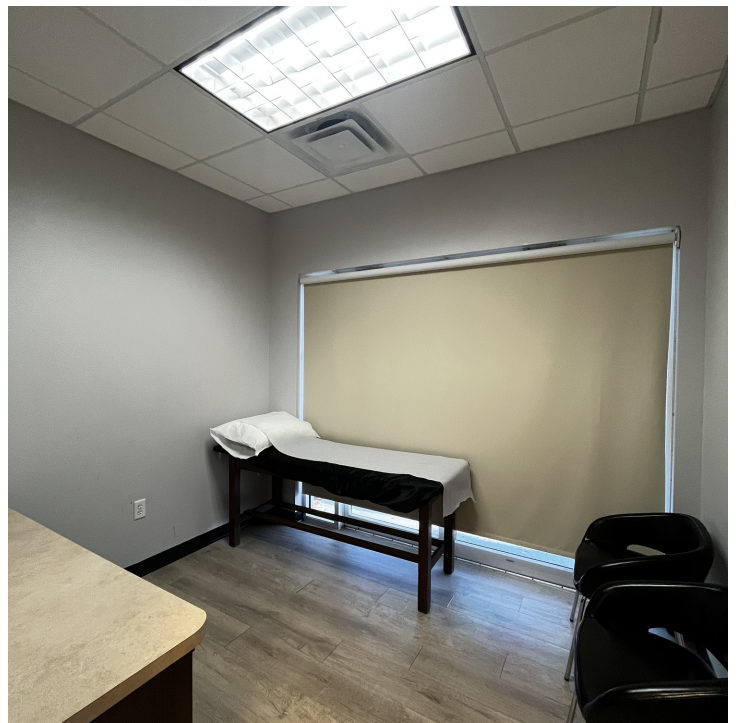
## PROPERTY HIGHLIGHTS

- 3,800 SF office building
- Prime location in St. Cloud area
- Well-maintained and modern facility
- Attractive investment opportunity
- Strong potential for long-term growth
- Proven track record of stable returns
- Ideal for office building investors



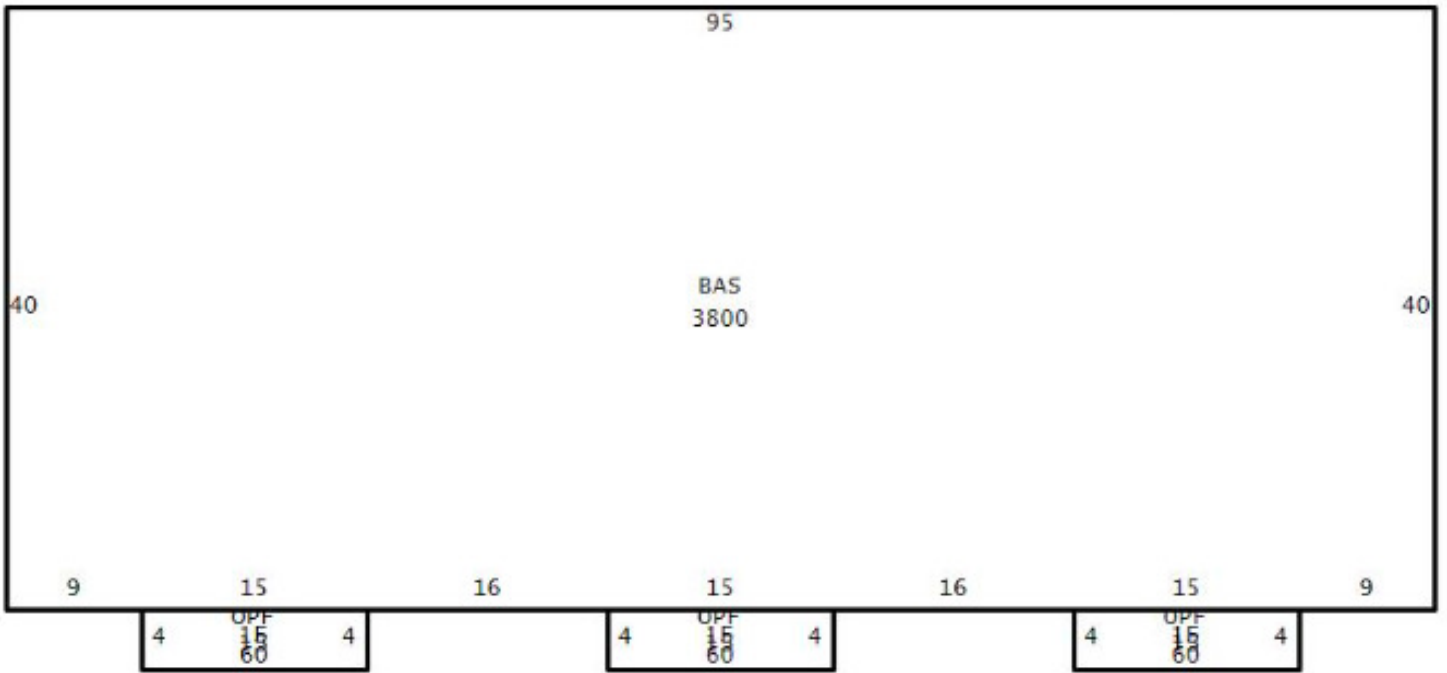
ST. CLOUD, FL 34769

# Additional Photos



ST. CLOUD, FL 34769

# Site Plans



ST. CLOUD, FL 34769

# Rent Roll

SUITE	TENANT	SF OCCUPIED	% SHARE	PRICE PER SF	LEASE START	LEASE END	OPTIONS	ANNUAL BASE RENT	MONTHLY BASE RENT	SECURITY DEPOSIT	ANNUAL ESCALATIONS	EST. NNN INCOME PER SF	GROSS ANNUAL INCOME
A	Premier Medical Associates of Florida	3800	100%	\$22.95	10/1/22	10/1/32	1 - Ten Year Option	\$87,199.61	\$7,266.63	\$13,300	3%	\$4.37	\$103,809.06
<b>TOTALS</b>			<b>100%</b>					<b>\$103,809.06</b>	<b>\$7,266.63</b>	<b>\$13,300</b>	<b>3%</b>	<b>\$4.37</b>	<b>\$103,809.06</b>



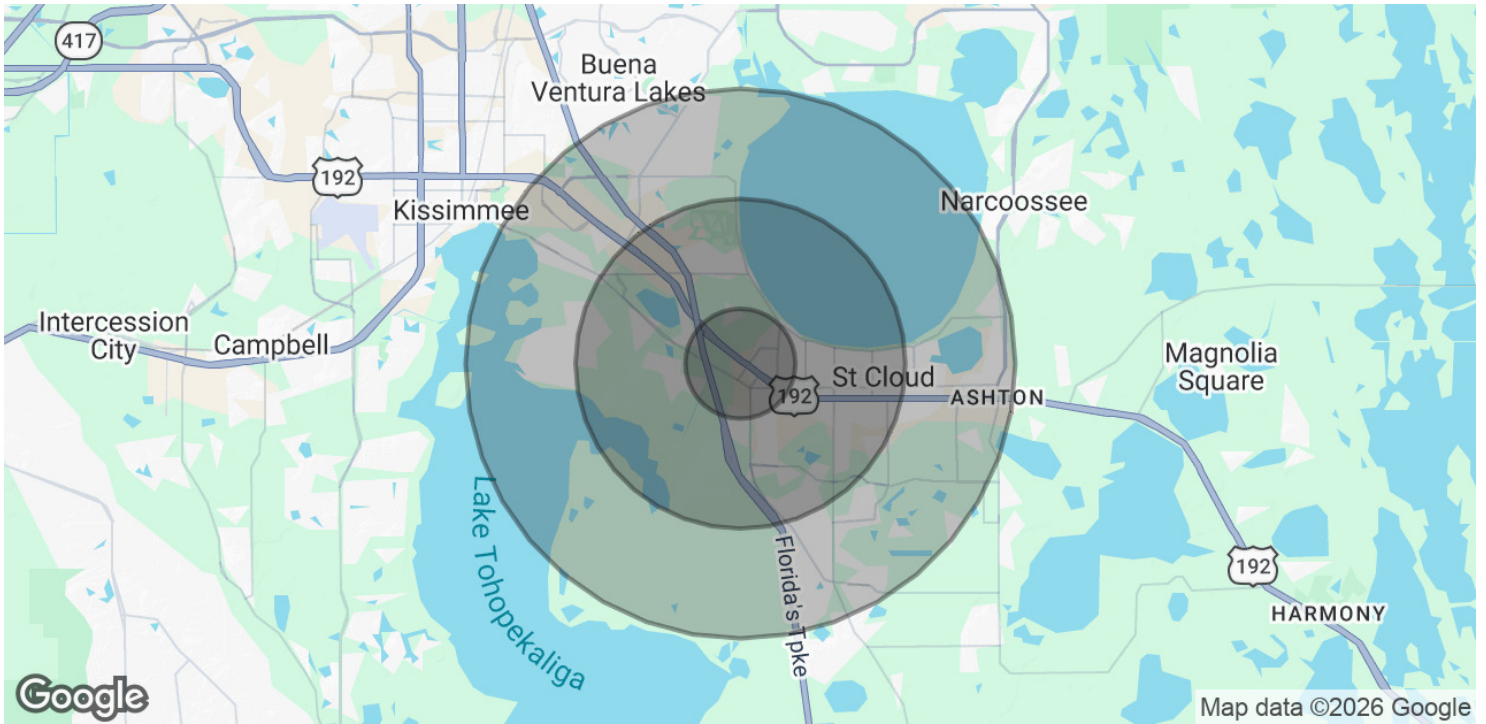
ST. CLOUD, FL 34769

# Retailer Map



ST. CLOUD, FL 34769

# Demographics Map & Report



<b>POPULATION</b>	<b>1 MILE</b>	<b>3 MILES</b>	<b>5 MILES</b>
Total Population	7,687	49,872	94,776
Average Age	41	40	40
Average Age (Male)	39	38	38
Average Age (Female)	43	41	41
<b>HOUSEHOLDS &amp; INCOME</b>	<b>1 MILE</b>	<b>3 MILES</b>	<b>5 MILES</b>
Total Households	2,713	17,481	32,084
# of Persons per HH	2.8	2.9	3
Average HH Income	\$77,886	\$79,341	\$84,225
Average House Value	\$315,365	\$335,734	\$352,590

2020 American Community Survey (ACS)

