

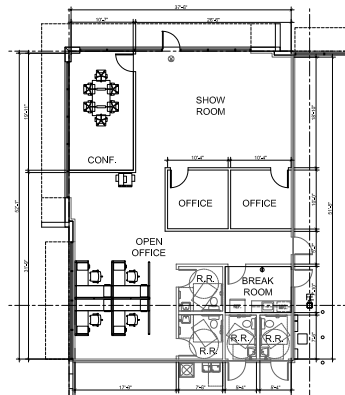
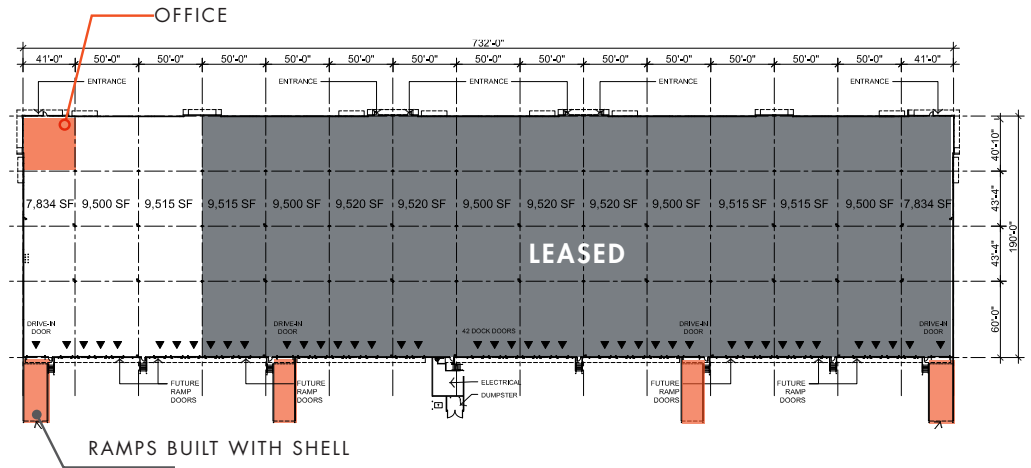
CREWS COMMERCE CENTER

BUILDINGS 1010-1021

26,850 - 30,634 SF AVAILABLE
FOR LEASE IN SOUTH ORLANDO

BUILDING 1020 (500)

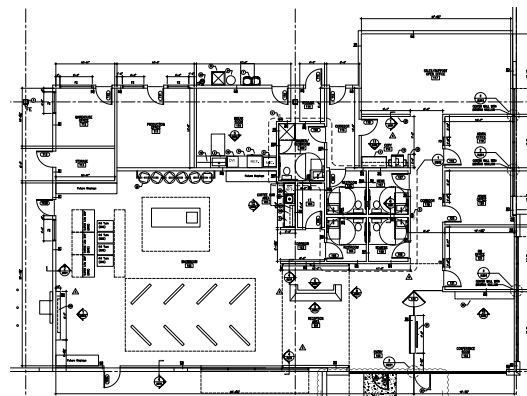
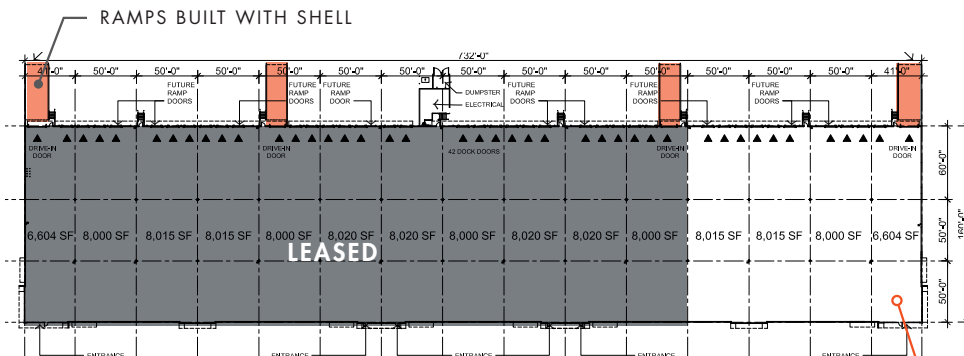
TOTAL: 26,850 SF
 DIMENSIONS: 190' x 141'
 OFFICE: 2,061 SF
 CLEAR: 30'6"
 COLUMNS: 50' x 50' typical
 DOORS: 12
 RAMPS: 2
 COURT DEPTH: 180'



2,061 SF OFFICE

BUILDING 1010 (600)

TOTAL: 30,634 SF
 DIMENSIONS: 160' x 191'
 OFFICE: 4,866 SF
 CLEAR: 28'
 COLUMNS: 50' x 50' typical
 DOORS: 10
 RAMP: 1
 COURT DEPTH: 180'



4,866 SF OFFICE

LANDSTREET RD

SR 528 - BEACHLINE EXPRESSWAY

FLORIDA TURNPIKE

CONSULATE DR

SITE ACCESS

FRONTAGE & USABILITY



FROM YOUR TRUCK COURT TO THE FLORIDA TURNPIKE IN ONE MINUTE

TAMPA 1.5 HOURS
JACKSONVILLE 2 HOURS
MIAMI 3.5 HOURS
ATLANTA 6 HOURS

DIRECT ORANGE BLOSSOM TRAIL ACCESS

ORANGE BLOSSOM TRAIL (SR 441)

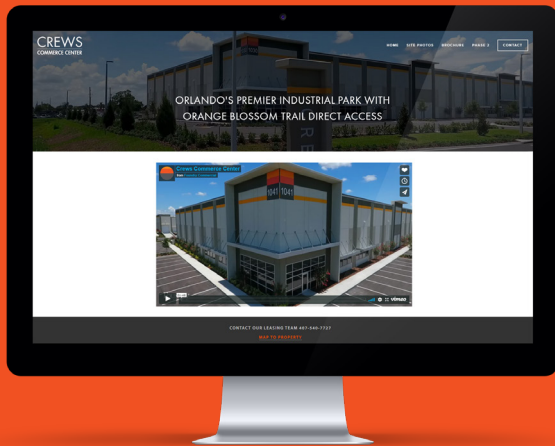


TURNPIKE RAMP

TWO TAFT VINELAND ACCESS POINTS

TAFT VINELAND RD

CREWS COMMERCE CENTER



Find updated photos, aerial videos of the site, and more:

FOUNDRYCOMMERCIAL.COM

TAKE A TOUR TODAY:

JUSTIN RUBY

Leasing | 407.865.0311

Justin.Ruby@foundrycommercial.com

JOEY WOODMAN

Leasing | 407.748.5888

Joey.Woodman@foundrycommercial.com

TRAVIS HAMMOND

Leasing | 407.401.1707

Travis.Hammond@foundrycommercial.com

A DEVELOPMENT BY:



FOUNDRY COMMERCIAL

420 S Orange Ave, Suite 400

Orlando, FL 32801

Although the information contained herein was provided by sources believed to be reliable, Foundry Commercial makes no representation, expressed or implied, as to its accuracy and said information is subject to errors, omissions or changes.