



FOR SALE

7901 Kingspointe Parkway
Orlando, FL 32819



RESOURCE
DEVELOPMENT
INVESTMENT
PROPERTIES
INCORPORATED



Address: 7901 Kingspointe Parkway, Unit #20
Orlando, FL 32819

Size: 1,650 SF

Type: Flex/Warehouse

PROPERTY DESCRIPTION

This well-maintained 1,650 SF flex space that includes over 380 SF of AIR-CONDITIONED WAREHOUSE SPACE. The versatile layout is ideal for an office, showroom, or light warehouse use. The interior includes 4 private offices with framed doors and glass inserts, a conference room, reception area, kitchen, and an upgraded ADA-compliant restroom. Finishes include travertine and wood flooring, crown molding, and baseboards throughout, creating a polished and professional feel. The warehouse has an overhead garage door for easy access, the space also has a security alarm system and surveillance cameras. Zoned Industrial, the unit comes with three assigned parking spaces and additional guest parking within the complex. Conveniently located just off Sand Lake Road, between I-4 and the Florida Turnpike, this location provides excellent access to Universal Studios, Disney, Orlando International Airport, and all of Central Florida.

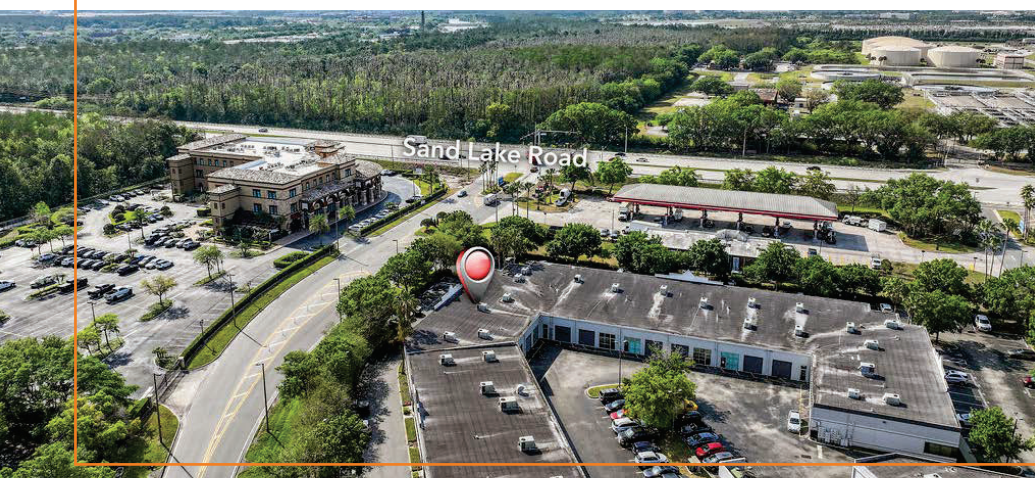


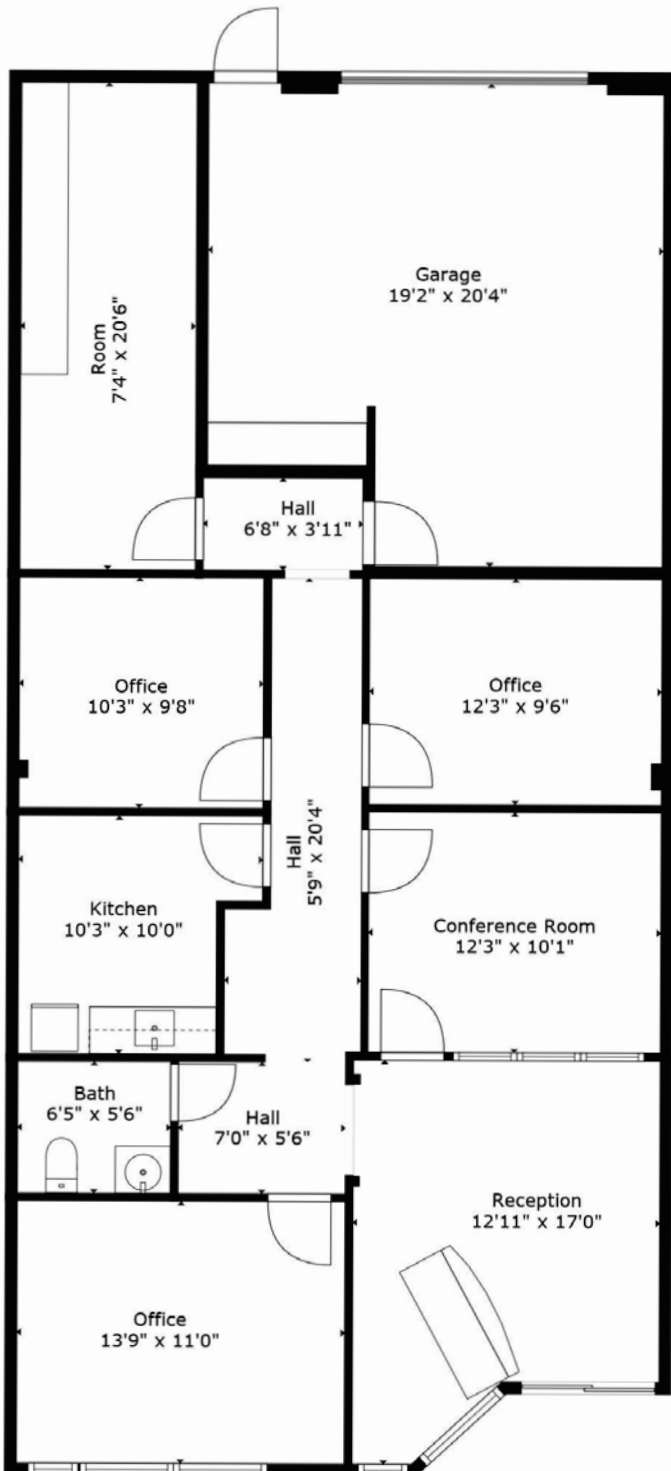
BUILDING FEATURES

- 3 offices/conference room/break room/production room/warehouse space
- 1 Roll Up Door/Grade level
- Clean/Updated Finishes
- 100% AC space
- Dedicated Parking spaces: 3 reserved with plenty of open guest/employee parking

ASKING PRICE

\$750,000





THE MARKET

Located off Sand Lake Road and Kirkman Intersection, near International Drive/Convention Center/EPIC Universe (maybe have an aerial out 2 miles to show I-4, convention center, EPIC Universe, Universal Studios and SeaWorld.



MARKETPLACE AT DR PHILLIPS

- Publix
- HomeGoods
- CHASE
- ULTA
- Starbucks
- Chipotle

BAYHILL PLAZA

- Fitness CF
- SPROUTS FARMERS MARKET
- PGA TOUR SUPERSTORE
- ROSS DRESS FOR LESS



ORLANDO OUTLET MARKETPLACE

- SKECHERS
- Nike ClearanceStore

MILLENNIA PLAZA

- ROSS DRESS FOR LESS
- HomeGoods
- Marshalls
- petco
- ULTA BEAUTY

I-DRIVE VALUE CENTER

- ROSS DRESS FOR LESS
- dd's DISCOUNTS
- five BEL'W
- DOLLAR TREE

OLINDA CENTER

- TJ-maxx
- five BEL'W
- Burlington

ORLANDO SQUARE

- OLLIE'S GOOD STUFF CHEAP
- CENTRAL ROCK GYM
- Office DEPOT
- ROSS DRESS FOR LESS

SKYVIEW PLAZA

- ROSS DRESS FOR LESS
- Marshalls
- dd's DISCOUNTS
- SKECHERS
- five BEL'W

Publix

WHOLE FOODS MARKET

ICON PARK

LOCKHEED MARTIN

EPIC UNIVERSE

LOWE'S

Walmart

Walmart

SAND LAKE CORNERS

- PET SMART
- HAIR CUTTERY

FLORIDA MALL

- Dillard's
- macy's
- Crayola Experience
- JCPenney

Orange County Convention Center

SHINGLE CREEK

CONTACT US

For more details or to schedule a viewing, please contact



RESOURCE
DEVELOPMENT
INVESTMENT
PROPERTIES
INCORPORATED



Kane Morris-Webster, CCIM

Senior Director



kmw@RDIPFlorida.com



407.928.8752

This document/email/presentation has been prepared by Resource Development Investments Properties Incorporated (RDIP) for advertising and general information only. RDIP makes no guarantees, representations or warranties of any kind, expressed or implied, regarding the information including, but not limited to, warranties of content, accuracy and reliability. Any interested party should undertake their own inquiries as to the accuracy of the information. RDIP excludes unequivocally all inferred or implied terms, conditions and warranties arising out of this document and excludes all liability for loss and damages arising there from. This publication is the copyrighted property of RDIP and/or its licensor(s). © 2026. All rights reserved. This communication is not intended to cause or induce breach of an existing listing agreement.