

# FOR LEASE



6616-6652 Rowan Rd | New Port Richey, FL 34653

Lease Rate | \$18.00 psf Modified Gross

- 1,500 sf end-unit office space available for immediate occupancy
- Unit 6650-6652 provides 4 private offices, a reception/lobby area, plenty of open work space, 2 entry doors, built-in cabinetry with countertop, and two (2) restrooms
- Key West Style buildings with metal roofs and lots of windows
- Property is surrounded by beautiful & mature trees with plenty of land behind the buildings and each unit has a rear door for access
- Located on Rowan Road between Massachusetts Ave. and Main Street in New Port Richey
- Excellent visibility, signage and ample parking

## Rowan Road Professional

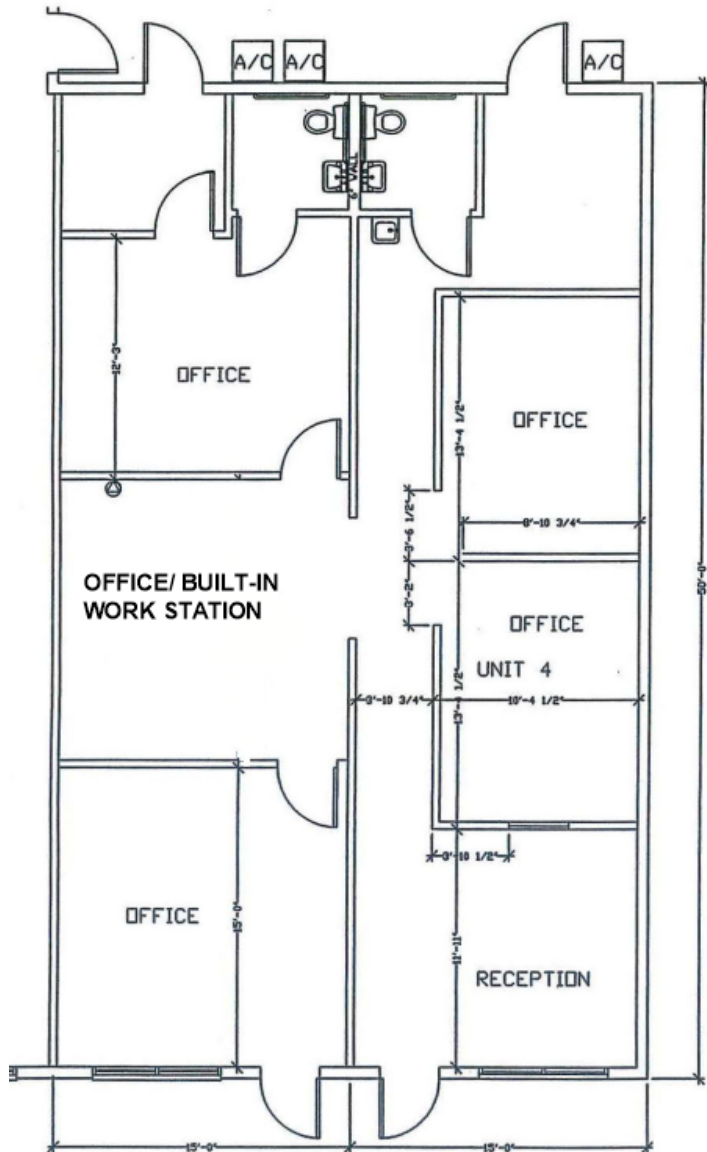
**Lisa Ingram**  
Commercial Associate  
Cell: (727) 946-7973  
lingram@cap-realty.com

Office: (727) 376-4900  
cap-realty.com



**COMMERCIAL ASSET  
PARTNERS**

FLOOR PLAN | 1,500 SF



Nice, neutral finishes throughout - Light & Bright!

PROPERTY FEATURES

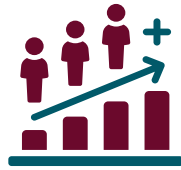
6616-6652 Rowan Rd | New Port Richey, FL 34653

# Demographics | 5 Miles



170,769

Population



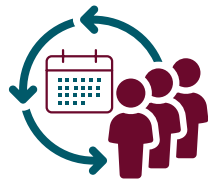
4%

Population Growth



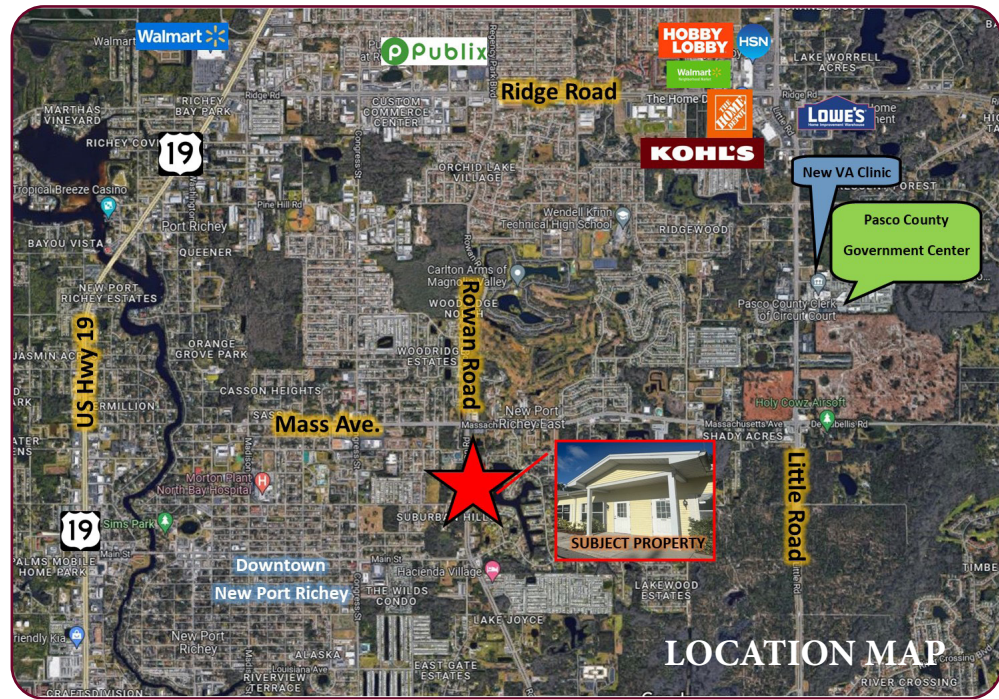
\$67,378

Average HH Income



45.7

Median Age



CAP-Realty.com  
(727) 376-4900

Visit us @ [www.cap-realty.com](http://www.cap-realty.com)  
LinkedIn | Facebook | Instagram  
Follow CAPRealty @ /commercialassetpartnersrealty/



COMMERCIAL ASSET  
PARTNERS

PROFESSIONAL OFFICE SPACE