

1540D Carlemont Drive
Crystal Lake, IL 60014

For Lease

MLS # 12626480

OFFICE



OFFICE 1,170 SF

\$18 SF/YR (NNN)

Property Description

Positioned just off Randall Road corridor, office suite offers convenience, visibility, and functionality for a variety of professional users.

The suite features an inviting open reception area, three private offices, a kitchenette, and a private restroom.

Exterior signage visible to Randall Rd is an option. Ample common parking.

Ideal for businesses seeking a professional presence in a strong commercial corridor.

Specifications

Description:	Office - Office Building
Size:	1,170 SF
Year Built:	2007
HVAC System:	HE Central Air
Electrical:	100 Amp
Washrooms:	1
Ceiling Height:	9'
Parking:	Common
Sewer/Water:	City
Zoning:	B-2-PUD
Taxes:	\$3,544.22 (2024)
CAM:	\$437.44 Per Month
PIN #:	19-18-479-027

[CLICK HERE TO VIEW OUR WEBSITE](#)

No warranty or representation is made as to the accuracy of the foregoing information. Terms of sale or lease and availability are subject to change or withdrawal without notice. This document is for information purposes only. No offer of sub-agency is being made.



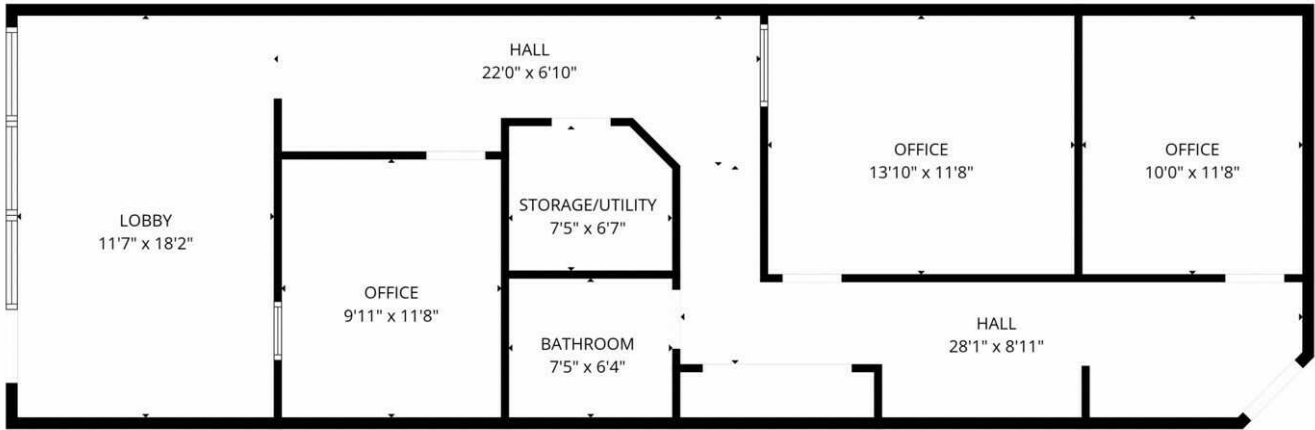
Heather Schweitzer
President / Designated Managing Broker
HeatherS@PremierCommercialRealty.com
O: 847.854.2300 x15 C: 815.236.9816

Austin Schweitzer
Associate Broker
AustinS@PremierCommercialRealty.com
O: 847.854.2300 x16 C: 815.236.9972

1540D Carlemont Drive
Crystal Lake, IL 60014

For Lease

OFFICE



[CLICK HERE TO VIEW OUR WEBSITE](#)

No warranty or representation is made as to the accuracy of the foregoing information. Terms of sale or lease and availability are subject to change or withdrawal without notice. This document is for information purposes only. No offer of sub-agency is being made.



Heather Schweitzer
President / Designated Managing Broker
HeatherS@PremierCommercialRealty.com
O: 847.854.2300 x15 C: 815.236.9816

Austin Schweitzer
Associate Broker
AustinS@PremierCommercialRealty.com
O: 847.854.2300 x16 C: 815.236.9972