

For Lease

# Brio Business Center

1,725 - 3,800 SF | \$2,922 - \$6,992 per month



## 1105-1295 West Airport Blvd

Sanford, Florida 32773

### Property Highlights

- Glass storefronts on Buildings 1, 2 and 3
- Grade-level roll-up doors
- Clear height: 14'
- Fire suppression system
- Zoning: PD (City of Sanford)
- Great visibility with frontage on Airport Blvd, at intersection of Old Lake Mary Road
- Easy access to US Highway 17-92, SR 46, SR 417 (GreeneWay), Lake Mary Blvd and I-4
- Surrounded by dense residential development
- Less than 5 miles from Orlando-Sanford International Airport

**Lease Rate: \$15.00 - \$16.75/SF NNN  
(Op Ex: \$5.33/SF)**

### AVAILABLE SPACES

Space	Lease Rate	Size (SF)
1109 West Airport, Bldg 1	\$2,922 per month	1,725
1181 West Airport, Bldg 2	\$6,992 per month	3,800



For more information

**Stian Funk**

O: 407 949 0747  
sfunk@realvest.com

# Property Photos



# Available Spaces

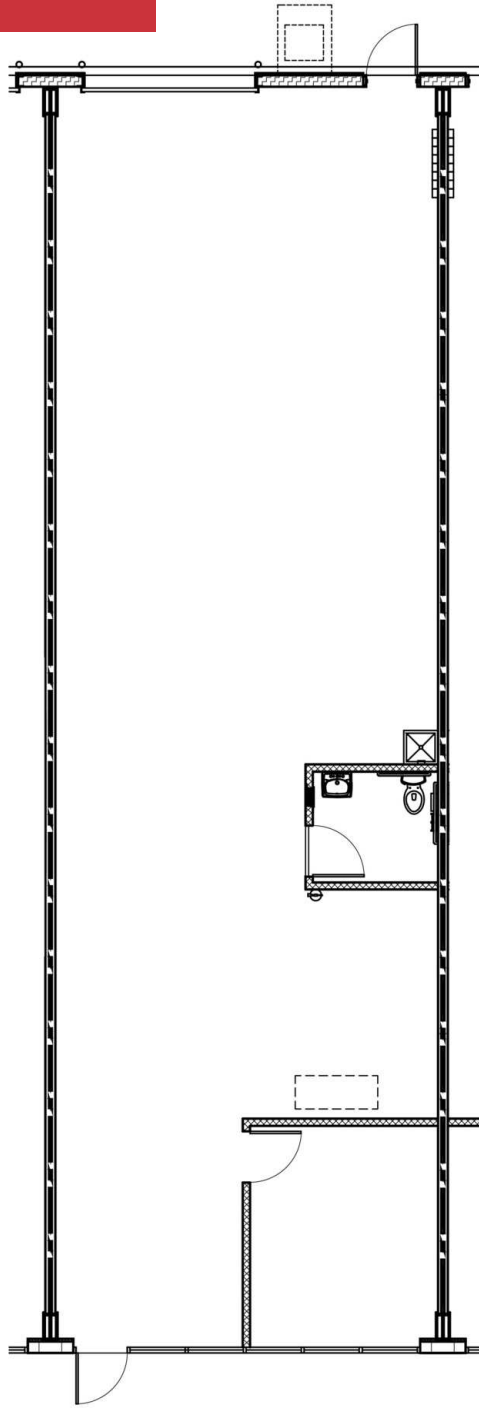


## AVAILABLE SPACES

SUITE	SIZE (SF)	LEASE TYPE	LEASE RATE	DESCRIPTION
1109 West Airport, Bldg 1	1,725 SF	NNN	\$2,922 per month	One private office   One grade-level roll-up door (10' W x 10' H); Power: 3-Phase / 208/120V / 225 Amps
1181 West Airport, Bldg 2	3,800 SF	NNN	\$6,992 per month	Three private offices with showroom, conference room, open bullpen and breakroom   One grade-level roll-up door (10' W x 10' H); Power: 3-Phase / 400 Amps (2 x 200 Amp panels)

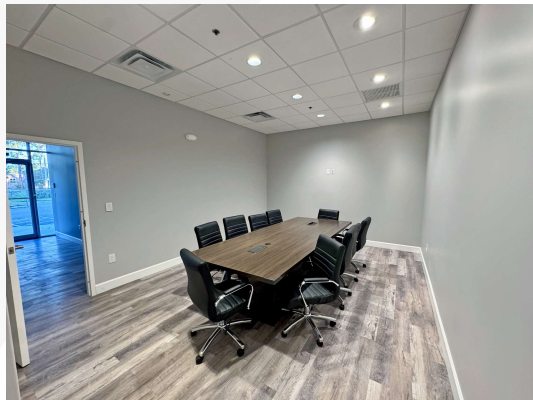
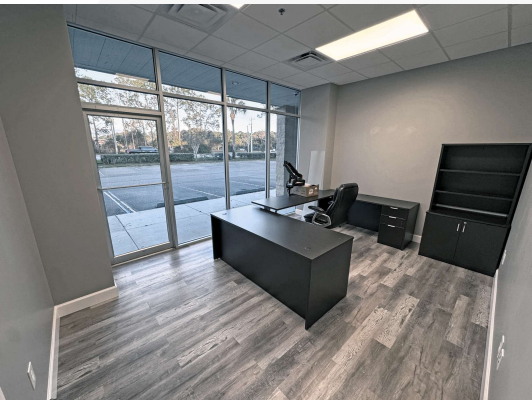
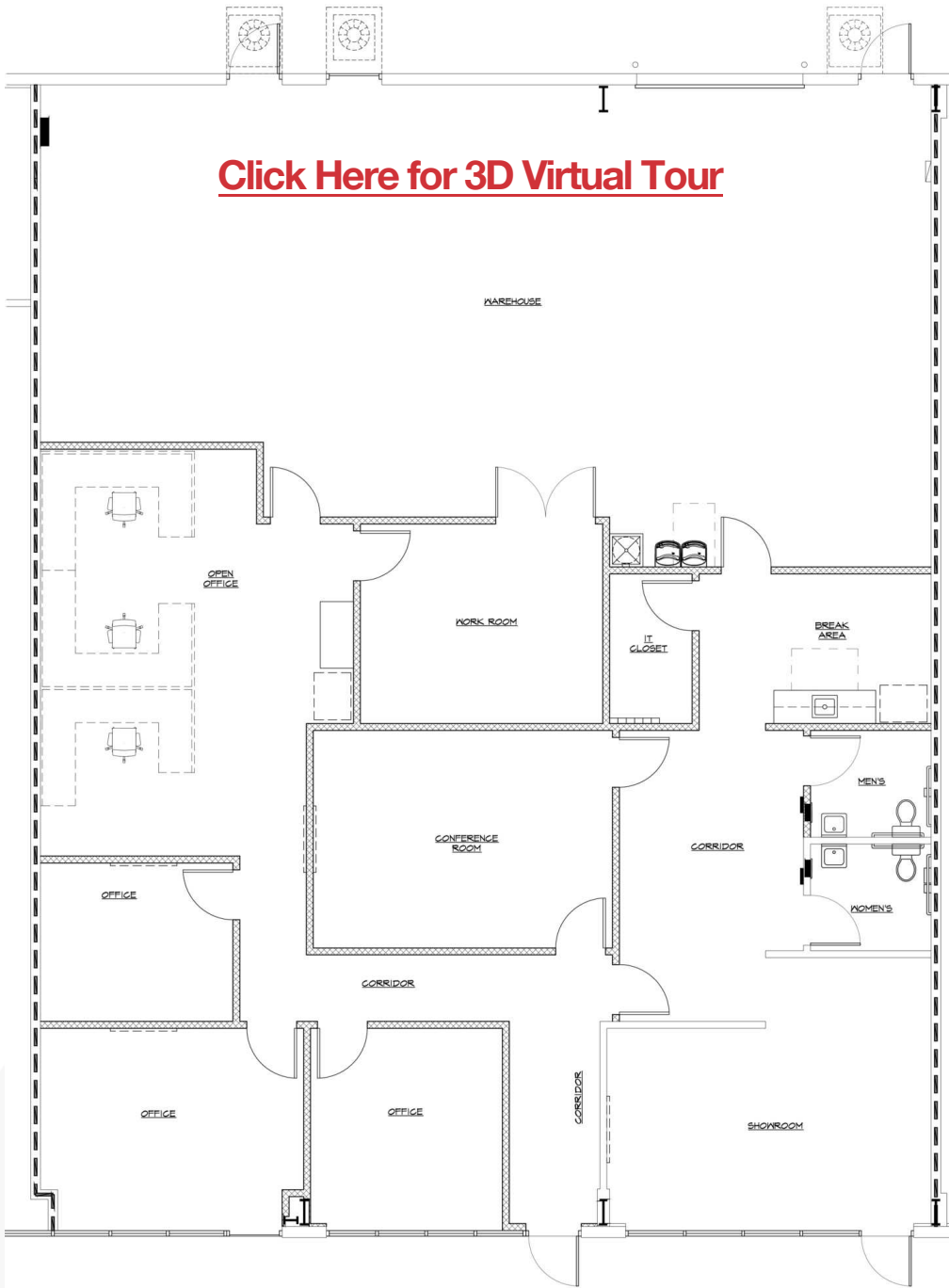
1109 West Airport Blvd - 1,725± SF

[Click Here for 3D Virtual Tour](#)

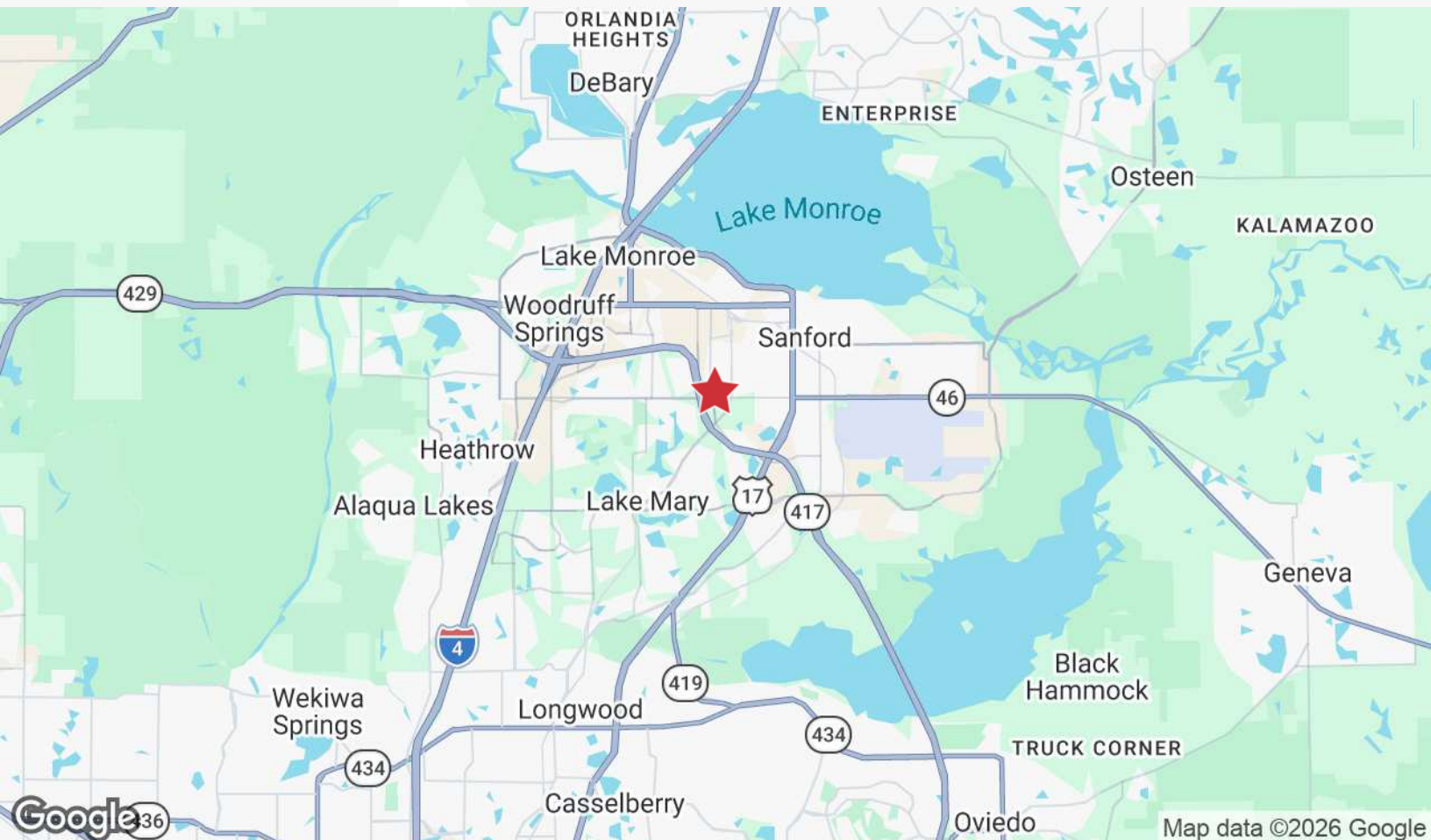
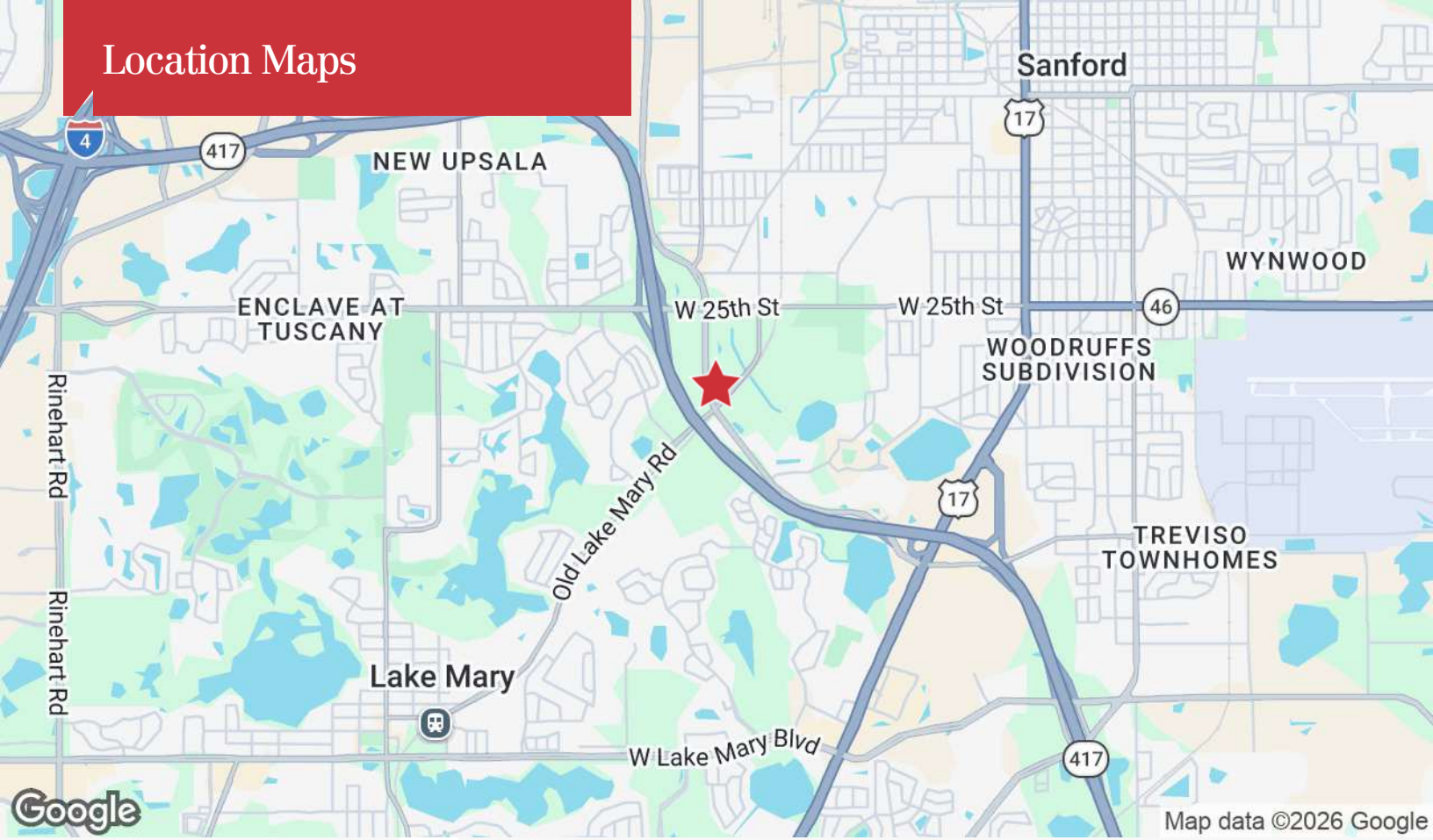


1181 West Airport Blvd - 3,800± SF

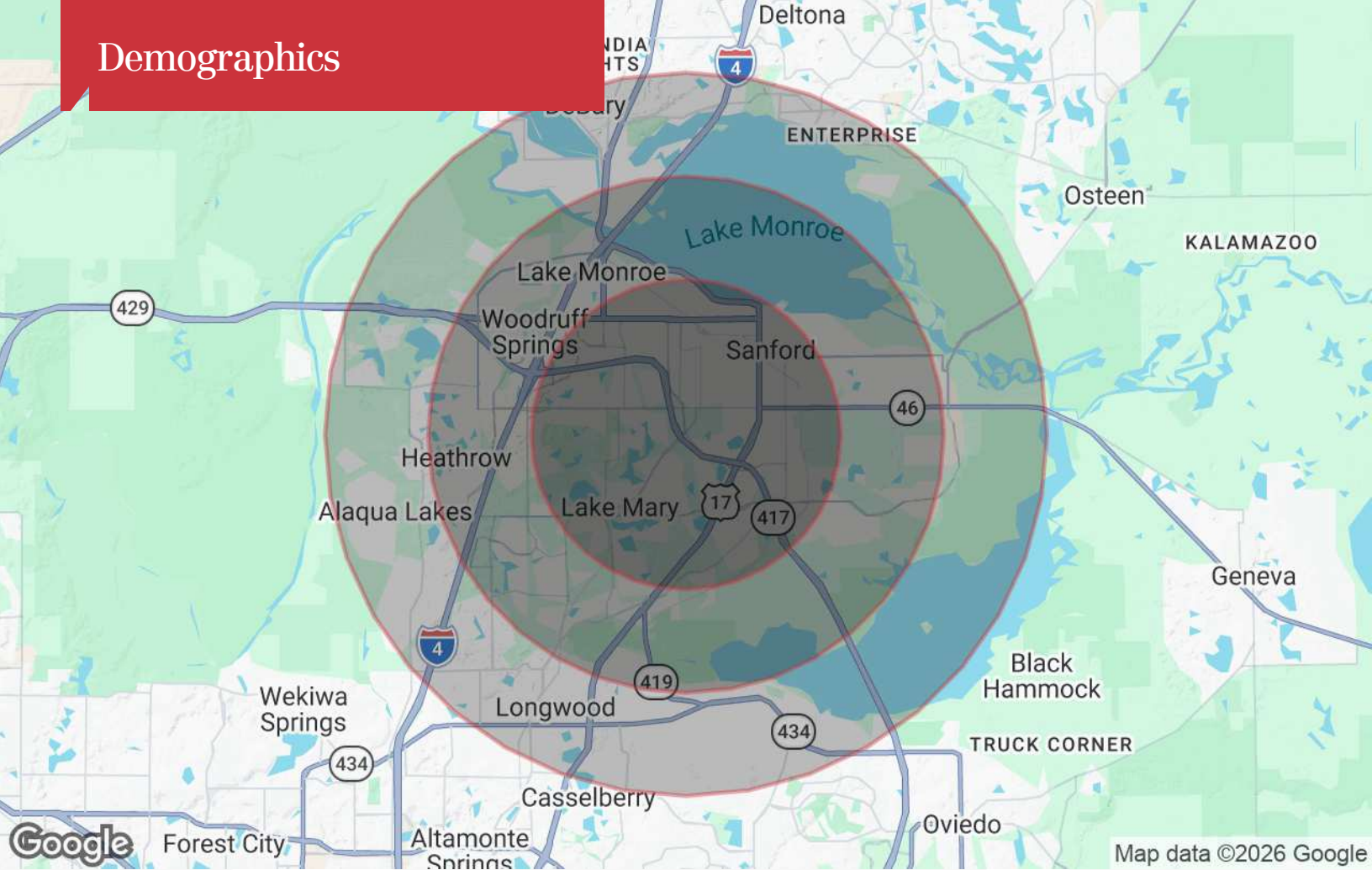
[Click Here for 3D Virtual Tour](#)



# Location Maps



# Demographics



## Population

	3 Miles	5 Miles	7 Miles
TOTAL POPULATION	76,265	137,390	208,469
MEDIAN AGE	39	40	41
MEDIAN AGE (MALE)	38	39	40
MEDIAN AGE (FEMALE)	40	41	42

## Households & Income

	3 Miles	5 Miles	7 Miles
TOTAL HOUSEHOLDS	29,222	52,744	80,070
# OF PERSONS PER HH	2.6	2.6	2.6
AVERAGE HH INCOME	\$90,147	\$104,943	\$109,275
AVERAGE HOUSE VALUE	\$326,496	\$389,849	\$402,292

\* Demographic data derived from 2020 ACS - US Census