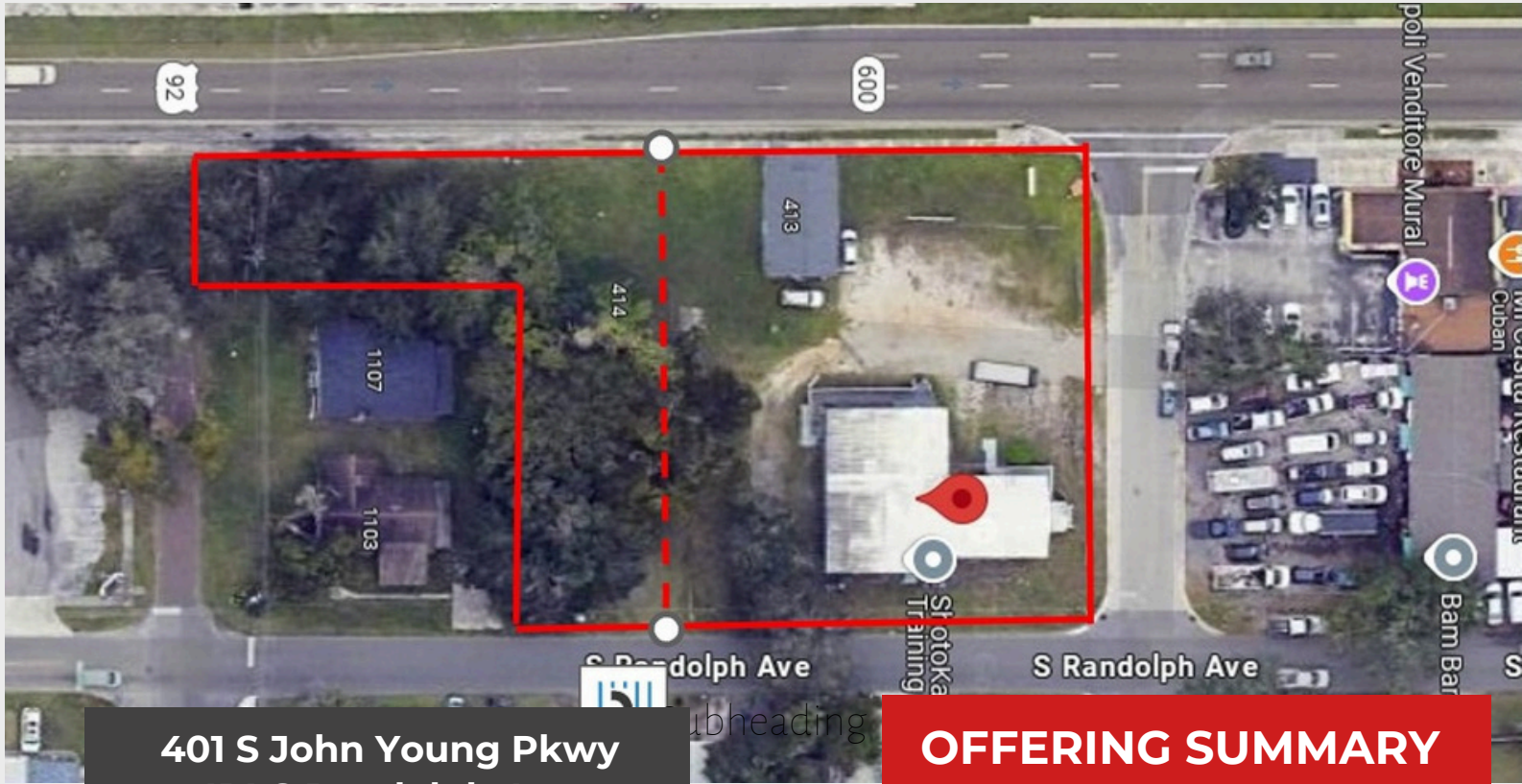


# GREAT LOCATION FOR REDEVELOPMENT PROPERTY FOR SALE

Kissimmee, FL



**401 S John Young Pkwy  
414 S Randolph Ave.  
413 S John Young Pkwy  
KISSIMMEE, FL**

## OFFERING SUMMARY

4,596 total SF/ .82 acres

**\$1,099,000**

## Property Highlights

- Centrally Located
- High Traffic Count
- Next to Major Road
- Great Redevelopment Opportunity
- Zoned T5-U
- Multiple Parcels (Retail and Land)
- Parcel ID: 282529192000220010 and 282529192000220020
- Located in fast growing Osceola County

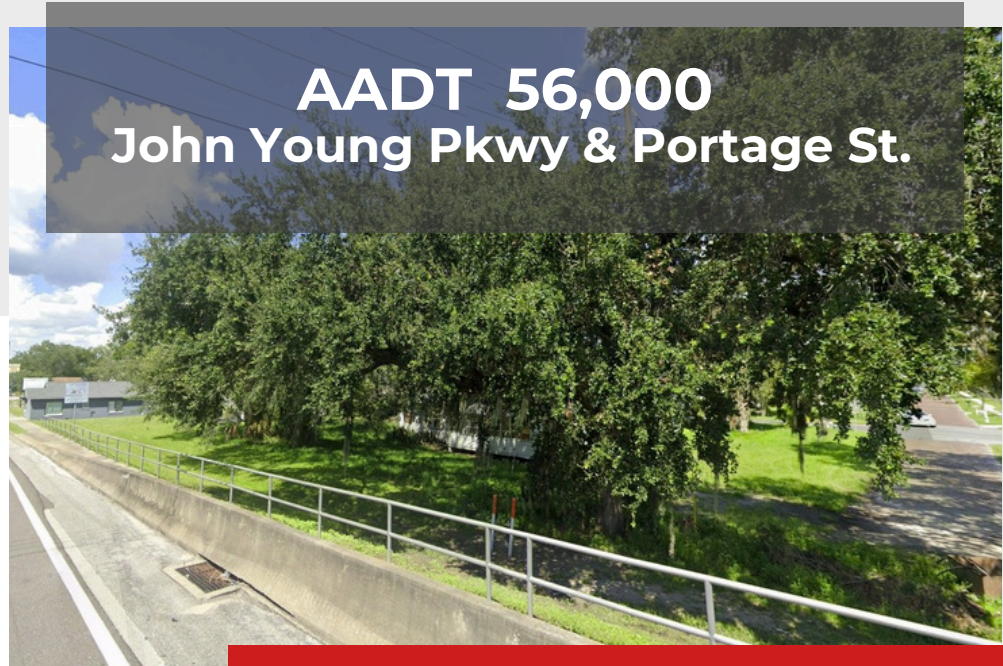
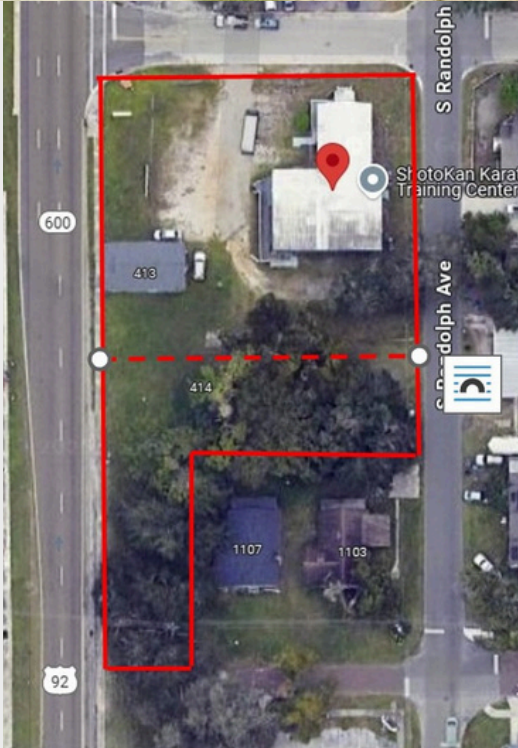
## DEMOGRAPHICS

2024 Summary

Radius	Population	Average HH Income
1 mile	6,676	\$63,764
3 miles	73,014	\$67,626
5 miles	189,597	\$76,159

# GREAT LOCATION FOR REDEVELOPMENT PROPERTY FOR SALE

Kissimmee, FL



**AADT 56,000**  
**John Young Pkwy & Portage St.**

**401 S John Young Pkwy**  
**414 S Randolph Ave.**  
**413 S John Young Pkwy**  
**KISSIMMEE, FL**

## OFFERING SUMMARY

4,596 total SF/ .82 acres

**\$1,099,000**