

For Lease

Office / Medical

1,148 - 3,262 SF | \$18.00/SF



Springs Medical & Professional Center

679-697 Douglas Avenue, Altamonte Springs, Florida 32714

Property Highlights

- Springs Medical & Professional Center is a 10-building office/medical center on 2.87 acres; Zoning: Office
- Entire individual free-standing buildings available
- Great location in Altamonte Springs, with immediate access to SR 436 (Semoran Blvd) and I-4
- Prominent monument signage on Douglas Avenue with building signage opportunities on I-4
- Less than 2 miles to AdventHealth Altamonte Springs Hospital, Cranes Roost, Uptown Altamonte, Altamonte Mall and the Altamonte SunRail station
- Beautifully landscaped; ample parking (5.43/1,000 SF)

Lease Rate: \$18.00 / SF NNN (CAM: \$5.26/SF)

AVAILABLE SPACES

Space	Lease Rate	Size (SF)
685 Douglas Avenue	\$18.00 SF/yr	1,670
689 Douglas Avenue	\$18.00 SF/yr	3,262
691 Douglas Avenue, Suite 103	\$18.00 SF/yr	1,148



For more information

Stian Funk

O: 407 949 0747
sfunk@realvest.com

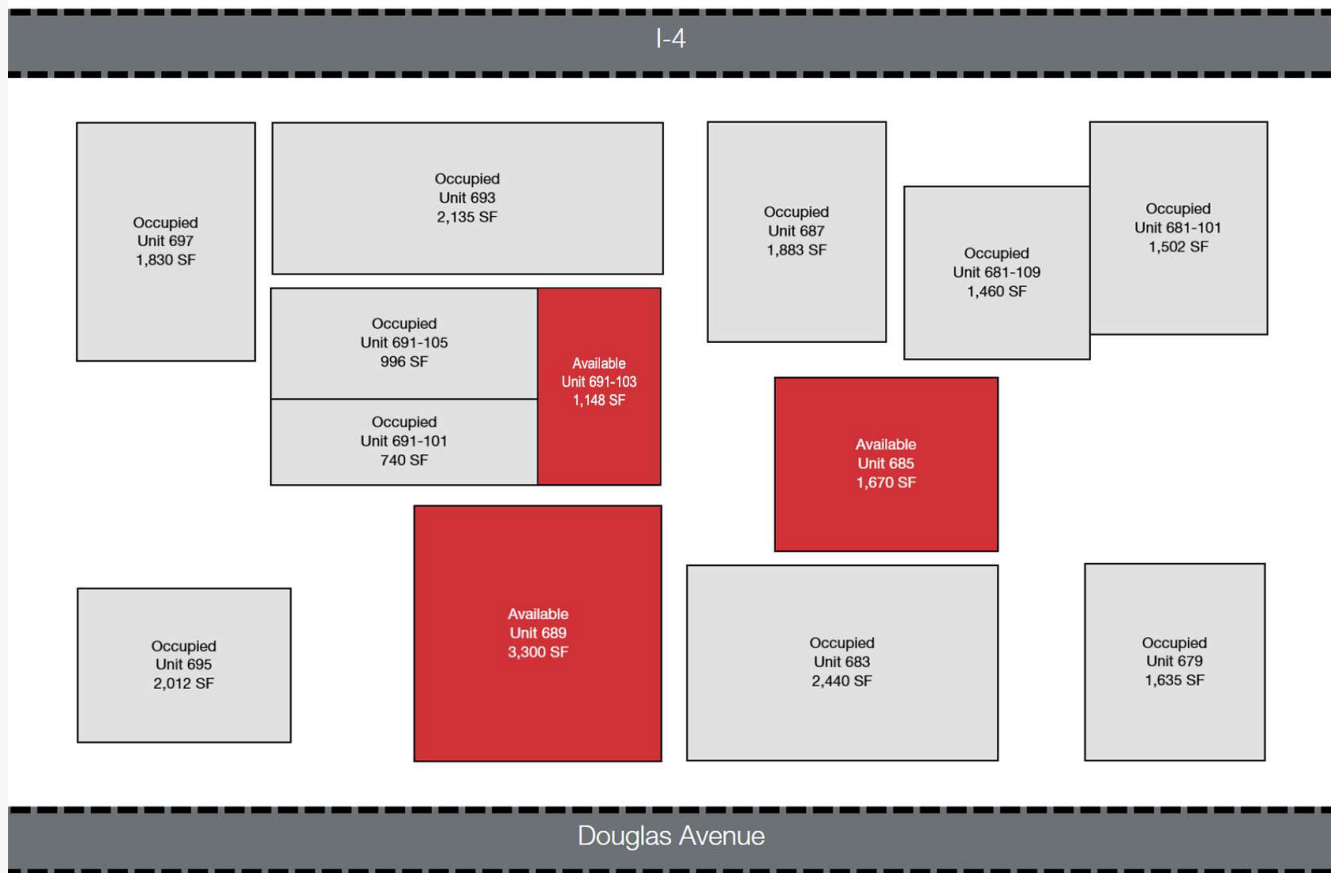
Property Aerials



Property Photos



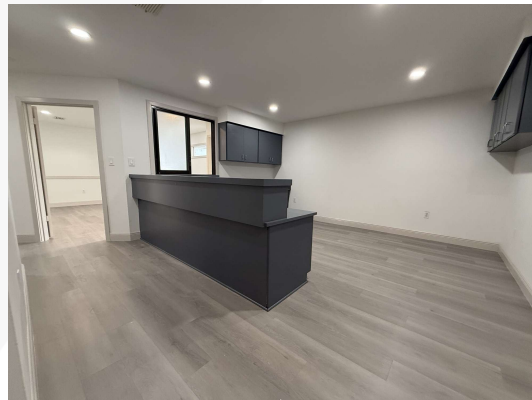
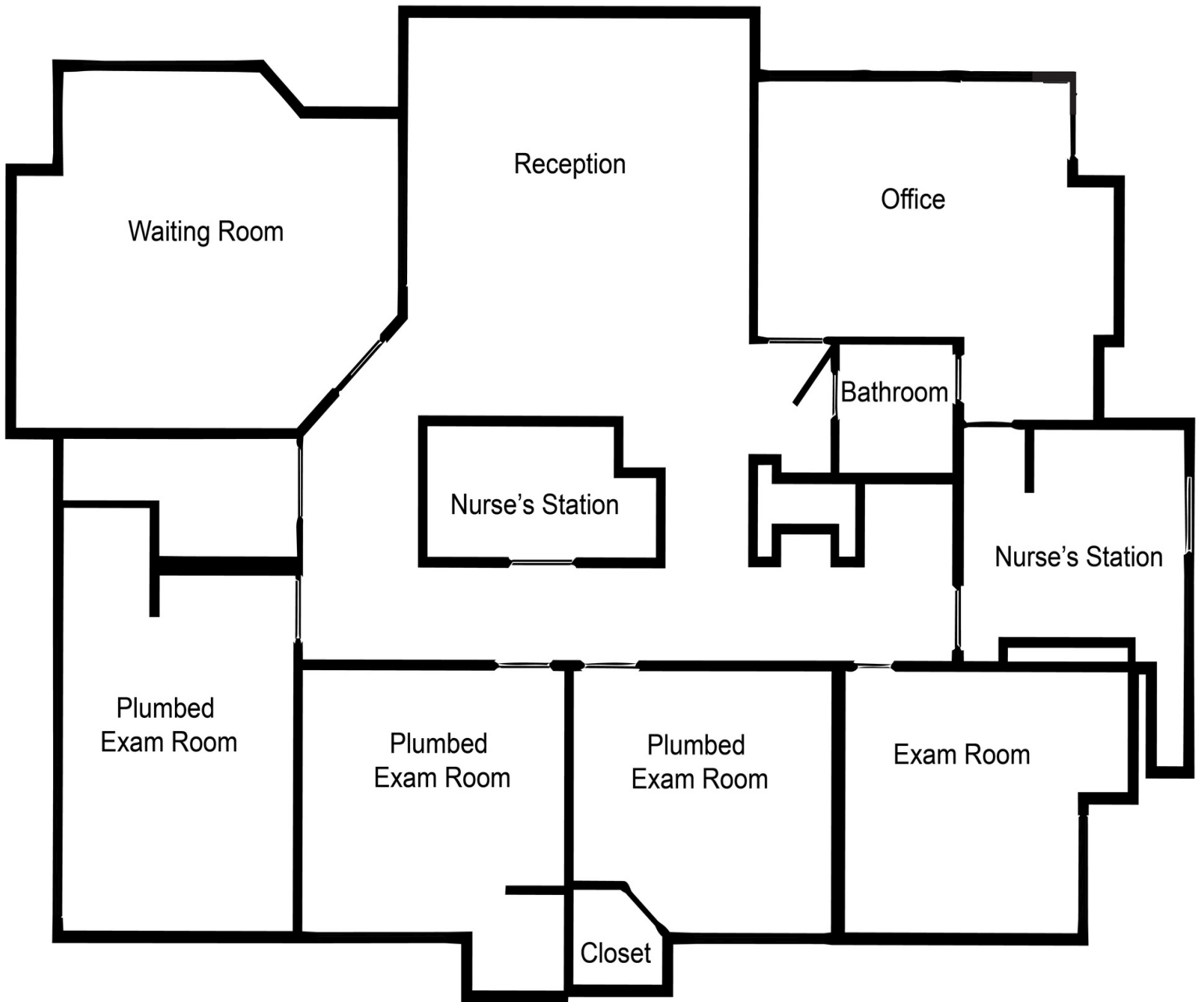
Available Spaces



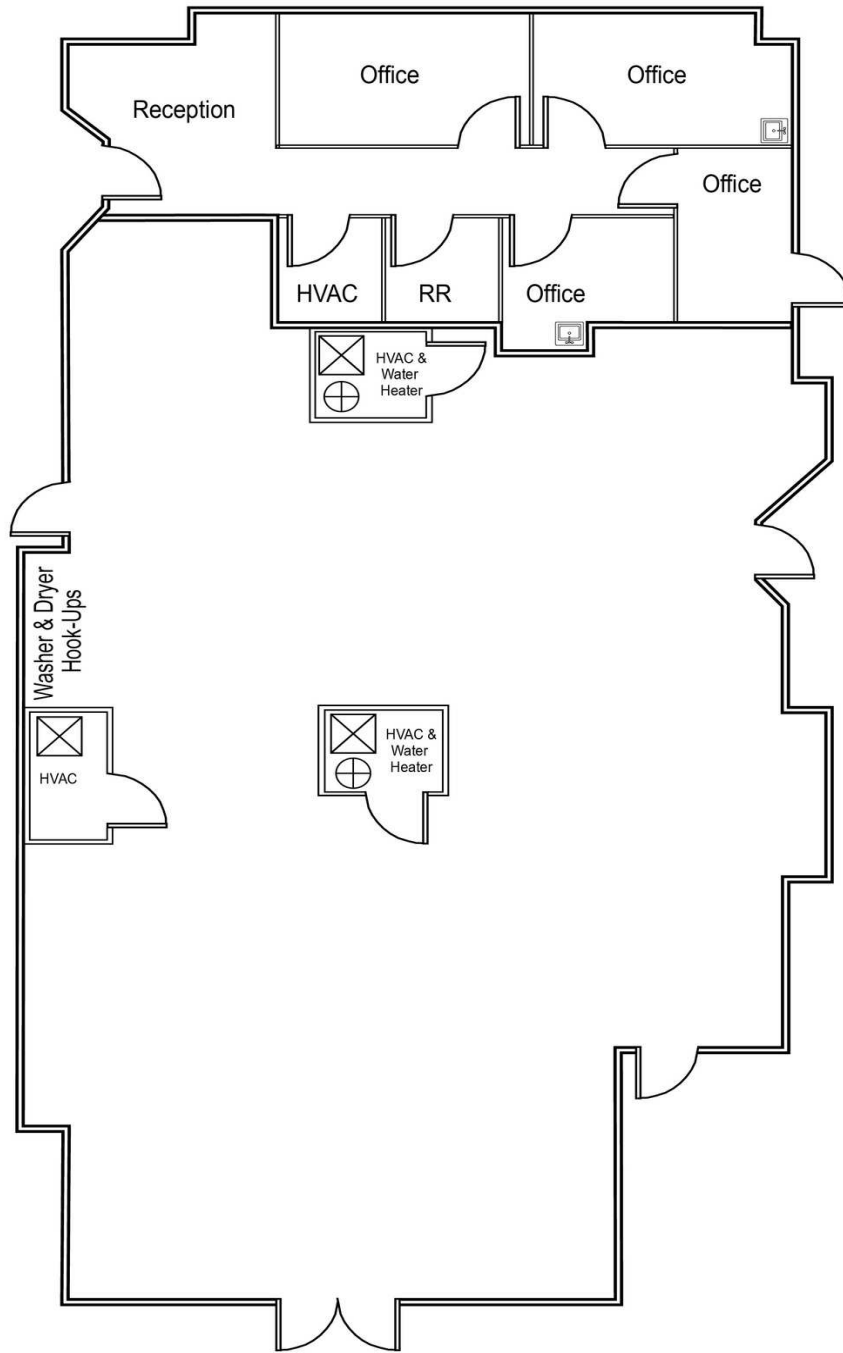
Space	Space Use	Lease Rate	Lease Type	Size (SF)	Comments
685 Douglas Avenue	Medical	\$18.00 SF/yr	NNN	1,670 SF	Plumbed exam rooms
689 Douglas Avenue	Office Building	\$18.00 SF/yr	NNN	3,262 SF	Shell condition
691 Douglas Avenue, Suite 103	Office Building	\$18.00 SF/yr	NNN	1,148 SF	Plumbed exam rooms

685 Douglas Ave - 1,670± SF

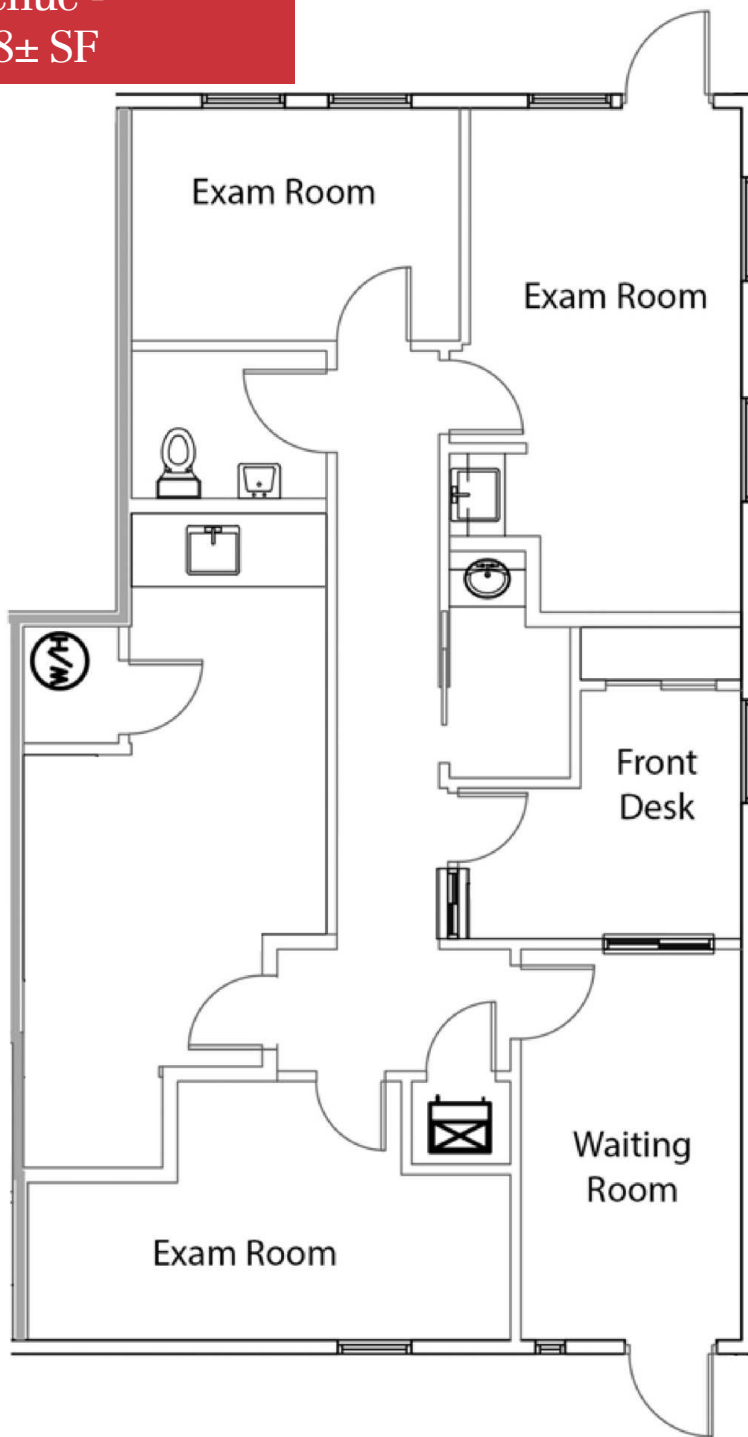
[Click for 3D Virtual Tour](#)



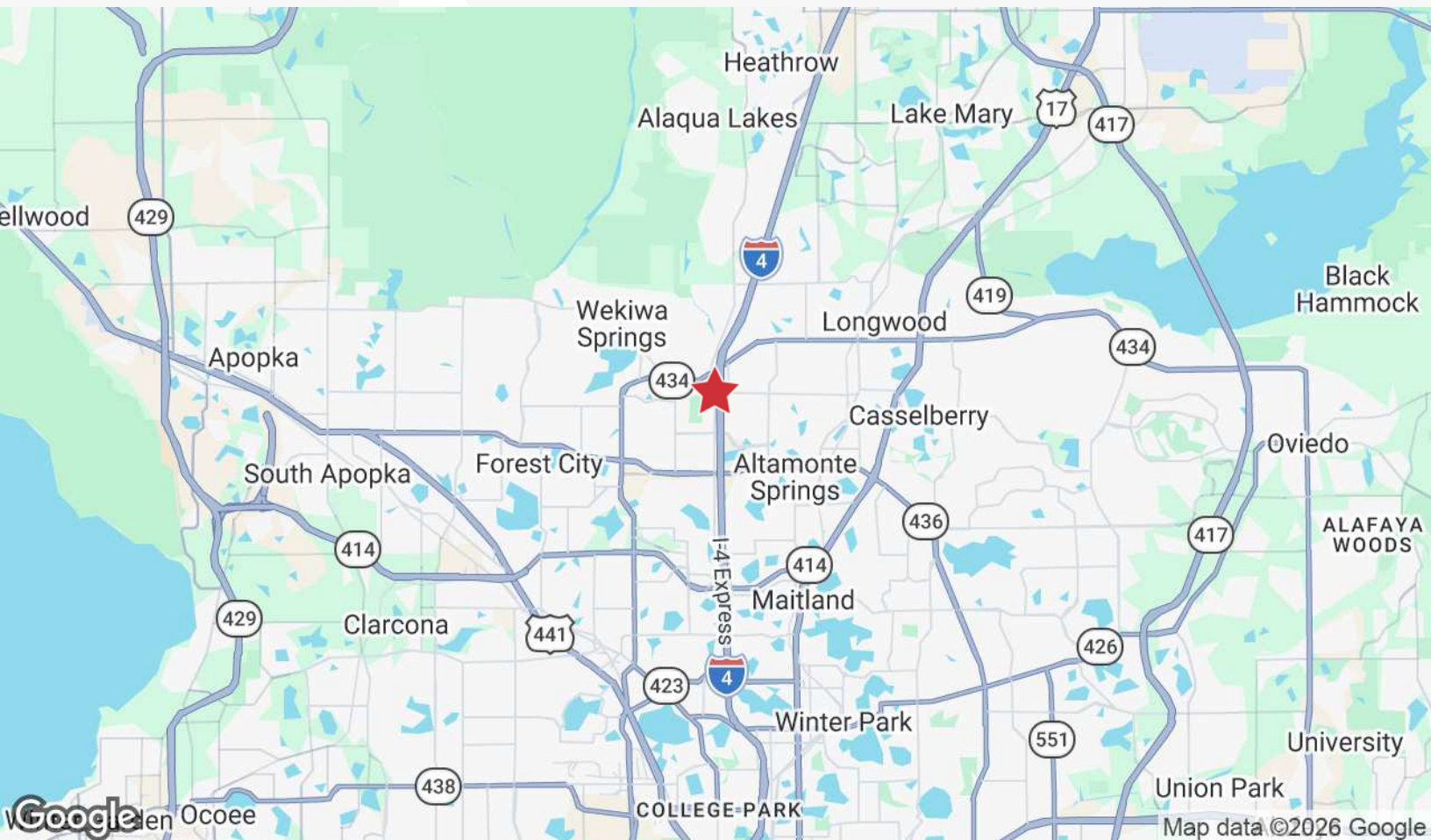
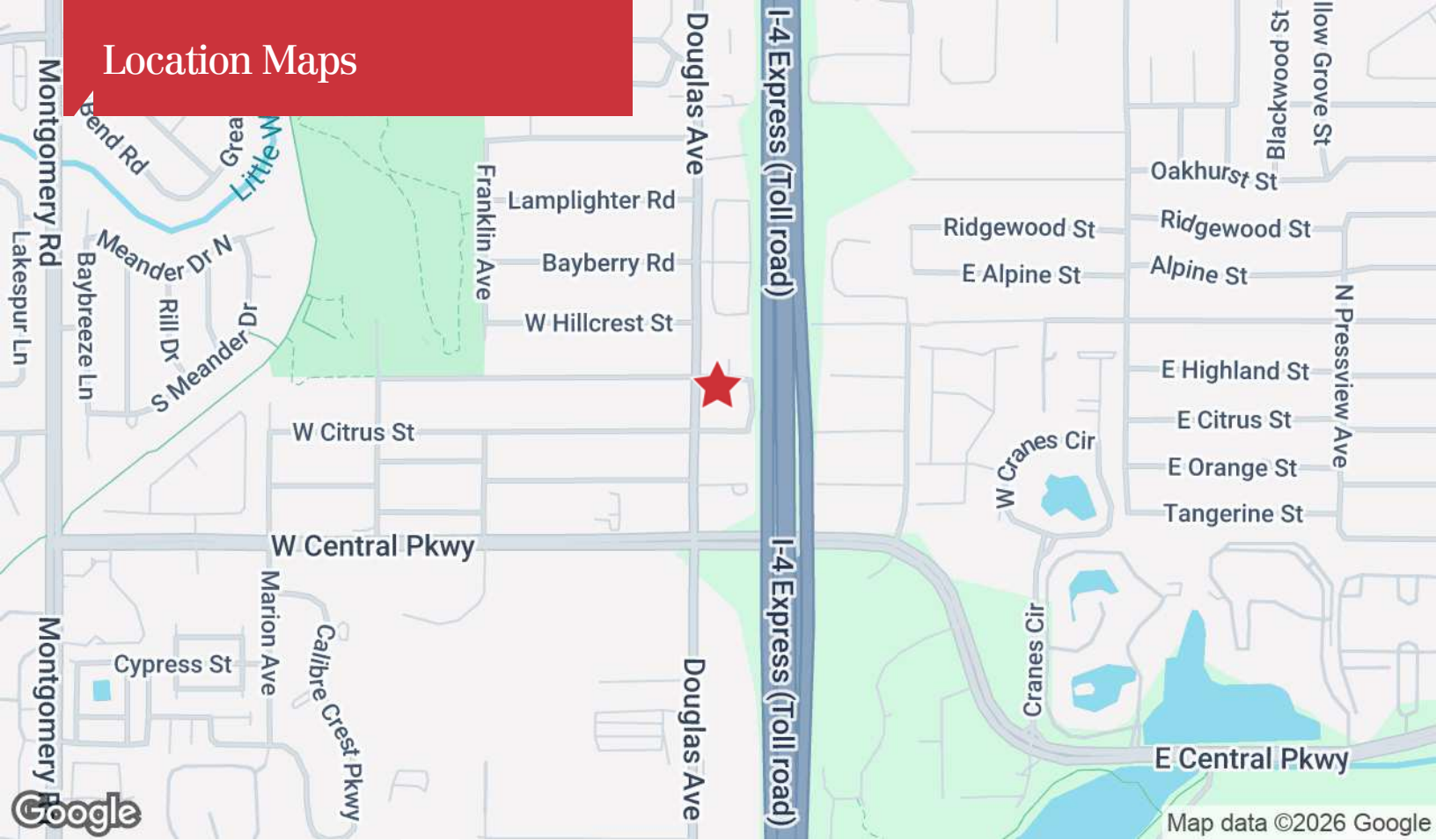
689 Douglas Ave, Suite 107 -
3,262± SF / Shell Condition



691 Douglas Avenue -
Suite 103 - 1,148± SF



Location Maps



The information contained herein has been given to us by the owner of the property or other sources we deem reliable. We have no reason to doubt its accuracy, but we do not guarantee it. All information should be verified prior to purchase or lease. Unless otherwise noted, the property is being offered as-is, where is, with all faults.

