

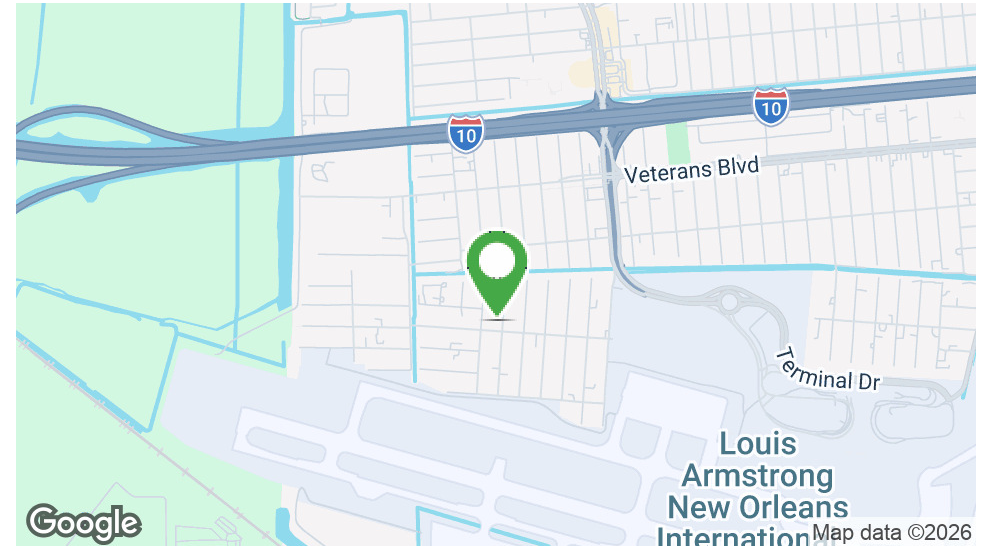


WAREHOUSE SPACE IN KENNER FOR LEASE

112 23rd Street, Kenner, LA 70062

MATT EATON, CCIM • PARTNER
OFFICE: 504.414.0703
MOBILE: 504.339.2136
matt@matteatonccim.com

MARTIN O. MILLER III, CCIM, SIOR • PARTNER
OFFICE: 504.414.0703
MOBILE: 504.616.5700
momiller@ccim.net



PROPERTY DESCRIPTION

This ±6,000 SF warehouse with office space is conveniently located near I-10 and Louis Armstrong New Orleans International Airport, offering excellent access for distribution, storage, or light industrial users. The property features off-street parking, a roll-up door with truck access, and generous ceiling heights suitable for a variety of industrial operations. Situated among established industrial users, the site provides a functional layout in a proven industrial corridor ideal for logistics, service, or warehouse tenants.

Tenants also have the option to lease a laydown yard behind the property adding an additional 13,000 sf of yard space.

OFFERING SUMMARY

Lease Rate: without Laydown Yard:	\$4,000/month
Lease Rate with Laydown Yard:	\$5,500/month
Building Size:	6,000 SF

DEMOGRAPHICS	3 MILES	5 MILES	10 MILES
Total Households	24,539	55,498	157,501
Total Population	64,215	139,802	380,019
Average HH Income	\$79,220	\$90,899	\$95,832

INDUSTRIAL PROPERTY FOR LEASE

PROPERTY SUMMARY





WAREHOUSE SPACE IN KENNER FOR LEASE

112 23rd Street, Kenner, LA 70062

MATT EATON, CCIM • PARTNER
OFFICE: 504.414.0703
MOBILE: 504.339.2136
matt@matteatonccim.com

MARTIN O. MILLER III, CCIM, SIOR • PARTNER
OFFICE: 504.414.0703
MOBILE: 504.616.5700
momiller@ccim.net



INDUSTRIAL PROPERTY FOR LEASE

ADDITIONAL PHOTOS

SOUTHEAST COMMERCIAL REAL ESTATE | 2310 19th Street, Gulfport, MS 39501 | 3900 N Causeway Blvd., Suite 100, Metairie, LA 70002 | www.southeastcre.com



SOUTHEAST
COMMERCIAL
REAL ESTATE



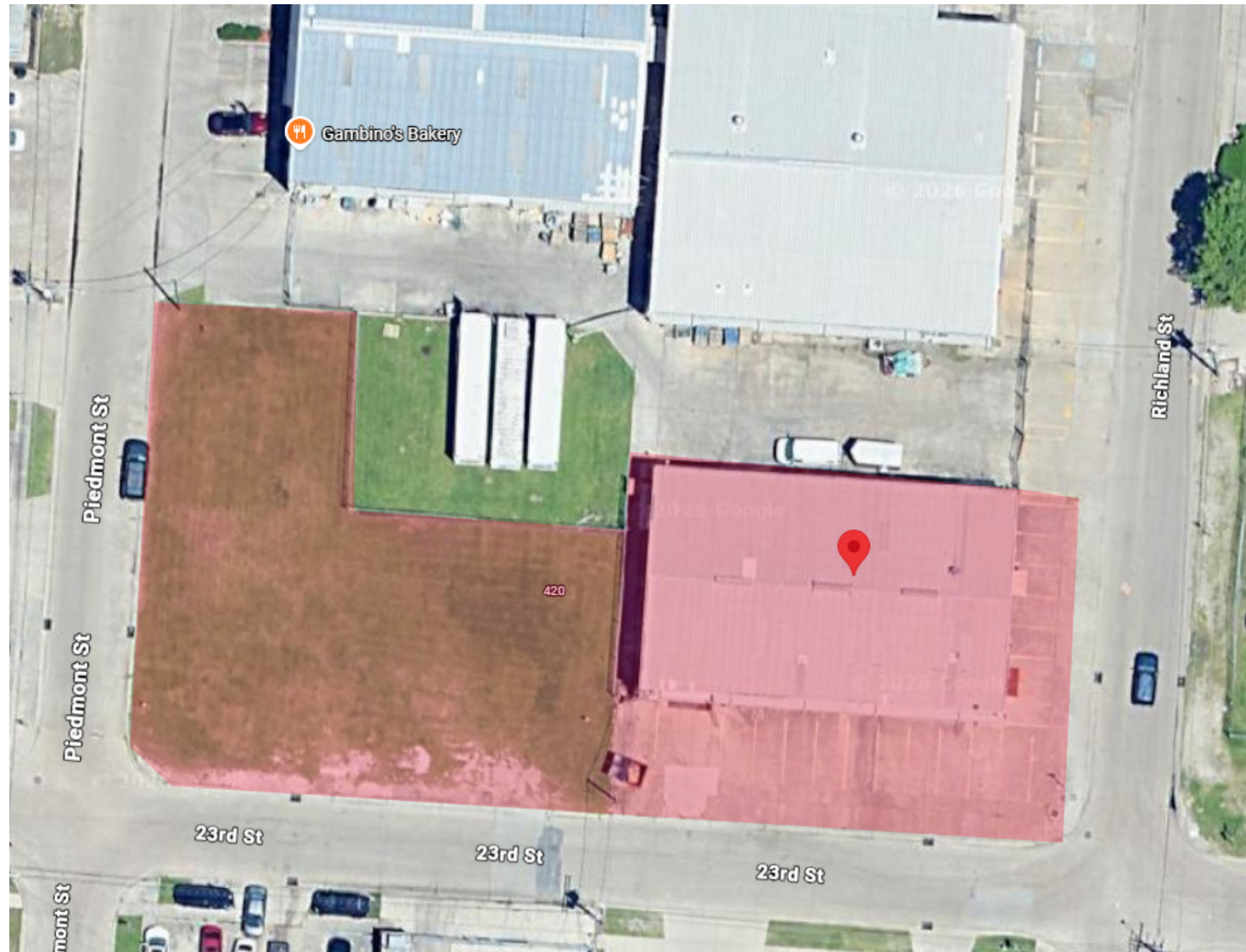


WAREHOUSE SPACE IN KENNER FOR LEASE

112 23rd Street, Kenner, LA 70062

MATT EATON, CCIM • PARTNER
OFFICE: 504.414.0703
MOBILE: 504.339.2136
matt@matteatonccim.com

MARTIN O. MILLER III, CCIM, SIOR • PARTNER
OFFICE: 504.414.0703
MOBILE: 504.616.5700
momiller@ccim.net



INDUSTRIAL PROPERTY FOR LEASE

LAYDOWN YARD



SOUTHEAST
COMMERCIAL
REAL ESTATE

SOUTHEAST COMMERCIAL REAL ESTATE | 2310 19th Street, Gulfport, MS 39501 | 3900 N Causeway Blvd., Suite 100, Metairie, LA 70002 | www.southeastcre.com





WAREHOUSE SPACE IN KENNER FOR LEASE

112 23rd Street, Kenner, LA 70062

MATT EATON, CCIM • PARTNER
OFFICE: 504.414.0703
MOBILE: 504.339.2136
matt@matteatonccim.com

MARTIN O. MILLER III, CCIM, SIOR • PARTNER
OFFICE: 504.414.0703
MOBILE: 504.616.5700
momiller@ccim.net



INDUSTRIAL PROPERTY FOR LEASE

AERIAL



SOUTHEAST
COMMERCIAL
REAL ESTATE

SOUTHEAST COMMERCIAL REAL ESTATE | 2310 19th Street, Gulfport, MS 39501 | 3900 N Causeway Blvd., Suite 100, Metairie, LA 70002 | www.southeastcre.com





WAREHOUSE SPACE IN KENNER FOR LEASE

112 23rd Street, Kenner, LA 70062

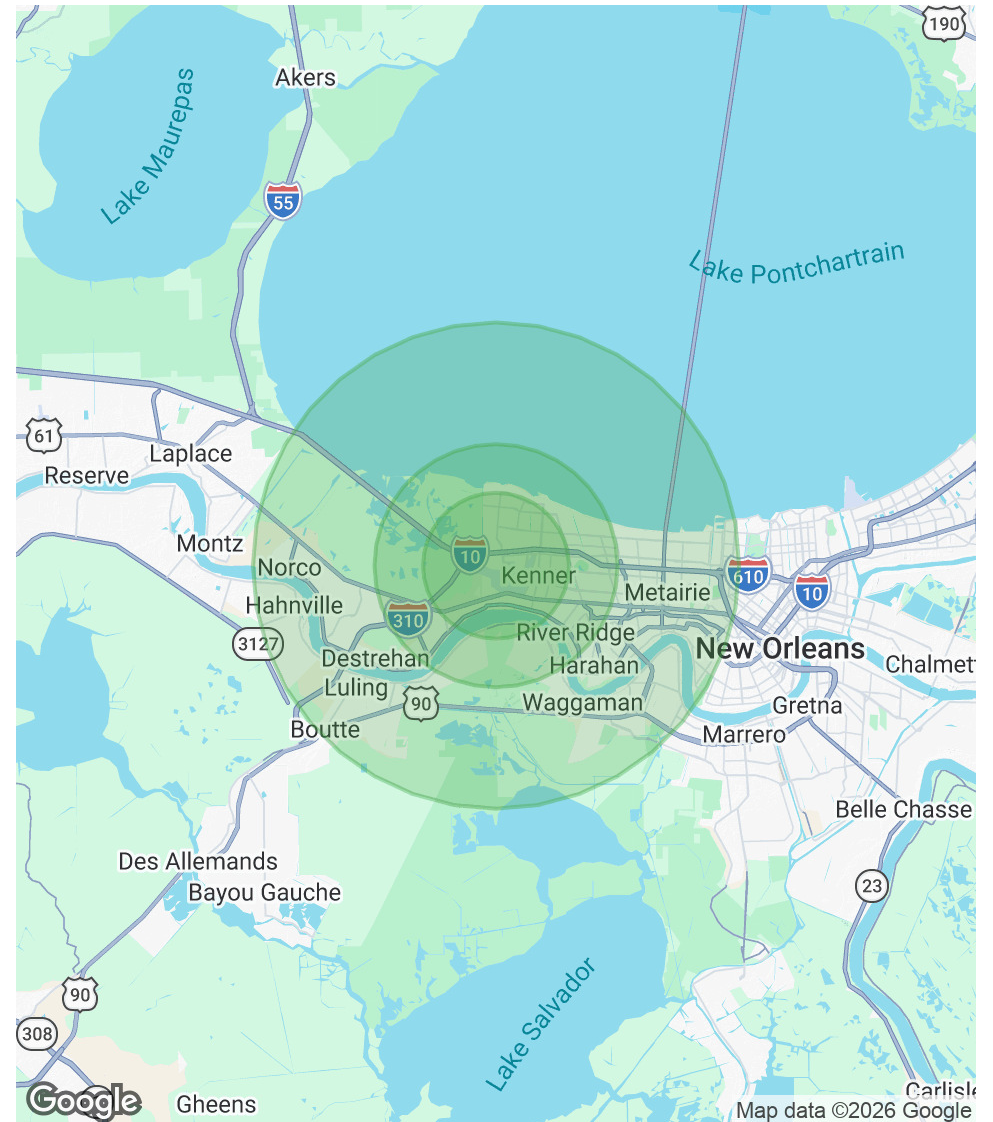
MATT EATON, CCIM • PARTNER
OFFICE: 504.414.0703
MOBILE: 504.339.2136
matt@matteatonccim.com

MARTIN O. MILLER III, CCIM, SIOR • PARTNER
OFFICE: 504.414.0703
MOBILE: 504.616.5700
momiller@ccim.net

POPULATION	3 MILES	5 MILES	10 MILES
Total Population	64,215	139,802	380,019
Average Age	41	42	41
Average Age (Male)	39	40	40
Average Age (Female)	42	43	42

HOUSEHOLDS & INCOME	3 MILES	5 MILES	10 MILES
Total Households	24,539	55,498	157,501
# of Persons per HH	2.6	2.5	2.4
Average HH Income	\$79,220	\$90,899	\$95,832
Average House Value	\$241,120	\$276,828	\$354,685

Demographics data derived from AlphaMap



INDUSTRIAL PROPERTY FOR LEASE

DEMOGRAPHICS MAP & REPORT



SOUTHEAST
COMMERCIAL
REAL ESTATE

SOUTHEAST COMMERCIAL REAL ESTATE | 2310 19th Street, Gulfport, MS 39501 | 3900 N Causeway Blvd., Suite 100, Metairie, LA 70002 | www.southeastcre.com

