

LAND & ESTATE FOR SALE | 8600 NE 147TH AVENUE RD

Ocala's Silver Springs Estate on Lake Fore

MARION COUNTY, FL

Country Estate Lifestyle

9.78± ACRES | \$1,150,000

SHOWINGS BY APPOINTMENT ONLY

PROOF OF FUNDS REQUIRED

A 9.78± acre **lakefront sanctuary** in Marion County where privacy, water, and endless oak hammocks and pine forests converge.

The **high-and-dry terrain** provides direct access to the Ocala National Forest, spanning nearly 400,000 acres, just steps from your back door. Cross the fence line and you are immediately immersed in **one of Florida's largest protected wilderness landscapes**.

As a private inholding within the forest, this property offers the rare opportunity to enjoy complete seclusion while maintaining full ownership rights and **the freedom to build, explore, and relax**.

With **private frontage on Lake Fore**, mornings can begin with coffee overlooking the water, while evenings are spent watching sunsets across the lake accompanied only by the sounds of nature. In our experience in the land business, opportunities like this are extremely uncommon — **this property truly represents a diamond within the Ocala National Forest landscape**.



Presented By

John A. Evans, Sr. & Isabelle Updike

john@moonbeamlandco.com | isabelle@moonbeamlandco.com



9.78± ACRES | \$1,150,000

Silver Springs Estate

Water, Wilderness & Privacy

Country estate living with near-immediate access to the conveniences of modern life in Silver Springs and Ocala. Grocery stores (Publix, Winn-Dixie, Walmart Supercenter), boutiques, dining, and daily services are all within close reach. Healthcare providers including AdventHealth Ocala, HCA Florida Ocala, urgent care clinics, and pharmacies are also easily accessible, along with exceptional outdoor recreation including springs, lakes, and the Ocala National Forest

IDEALLY LOCATED OVERVIEW

- 15 Minutes to Silver Springs
- 25 Minutes to Ocala
- 40 Minutes to World Equestrian Center
- 1 Hour to Gainesville
- 1.5 Hours to Orlando
- 1.5 Hours to Jacksonville
- 2 Hours to Tampa
- **Marion County, FL** — The Horse Capital of the Southeast
- **Zoning:** A1 Agricultural
- **Road Access:** Mixed asphalt and lime rock access via private deeded easement off NE 147th Ave Rd
- **Utilities:** Private well, septic, electricity, high-speed internet available
- **Topography:** High and dry, palmettos, pines, and oaks
- **Perimeter:** Barbed-wire fencing
- **Hunting allowed on site** (in accordance with local, state and federal laws)

Presented By

John A. Evans, Sr. & Isabelle Updike

john@moonbeamlandco.com | isabelle@moonbeamlandco.com



A Rare Ocala National Forest Inholding

The residence is tucked quietly along the back roads of Marion County, just a short drive from Ocala. Built in 2008, **the 2,508 sq ft home offers three bedrooms, two bathrooms**, and an open great room anchored by a stone fireplace. The kitchen features solid wood cabinetry and solid surface counters, while high ceilings, energy-efficient windows, and a full water filtration system create a comfortable and move-in-ready living environment. Functional, thoughtfully designed, and filled with natural light, the home blends seamlessly into its natural surroundings.

A **30' x 40' workshop** provides ample space for equipment, recreational toys, and projects. Whether your vision is quiet retirement, recreational enjoyment, or simply owning a true Florida homestead, **this property combines lakefront living, expansive acreage, and the freedom that only a private holding within the Ocala National Forest can provide**



Presented By

John A. Evans, Sr. & Isabelle Updike

john@moonbeamlandco.com | isabelle@moonbeamlandco.com



A True Old Florida Ecosystem

With hundreds of thousands of acres of protected wilderness surrounding the property, wildlife moves freely through the area, creating an authentic Old Florida environment rarely found elsewhere in the state. Whether you are a hunter, wildlife enthusiast, or simply someone seeking a private escape into nature, this property offers the opportunity to experience Florida's wild side right outside your door

Common Wildlife Observed in the Area: White-Tailed Deer, Florida Wild Hogs, Florida Black Bear, Wild Turkey (Osceola Subspecies), Florida Bobcat, Gray and Red Fox, Marsh Rabbits and Cottontails, Bald Eagles, Osprey, Barred and Great Horned Owls, Pileated Woodpeckers, Migratory Waterfowl (seasonal), Songbirds & Warblers

LAKE FORE

- Approximately 25± acres
- Crystal clear water
- Sand bottom
- Natural sand beach
- This property is the only privately owned parcel with access to Lake Fore
- Excellent fishing with species commonly including: Largemouth bass, Bream, Shellcracker & Perch
- Ideal for kayaking, paddle boarding, swimming, and quiet lake recreation
- Motorized vessels are not permitted on the lake
- Cleared and maintained shoreline with true “walk-into-the-water” lake frontage

PRIMARY RESIDENCE

- Built in 2008
- 2,508 sq ft under air
- 3 bedrooms / 2 bathrooms
- Open great room with stone fireplace
- Large kitchen with solid wood cabinetry and solid-surface counters
- Split floor plan with high ceilings
- Energy-efficient windows
- Attached garage
- Inside utility room
- Water filtration and softener system
- 30' x 40' garage/workshop
- Additional storage and office space in workshop

Presented By

John A. Evans, Sr. & Isabelle Updike

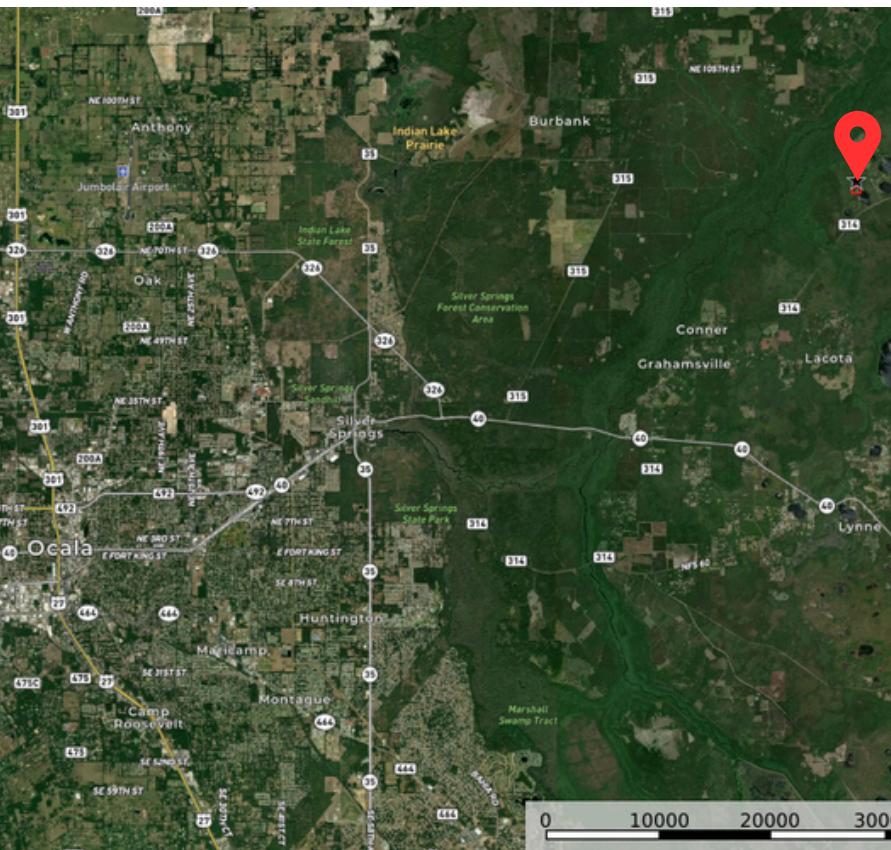
john@moonbeamlandco.com | isabelle@moonbeamlandco.com

[Interactive Map Link](#) →

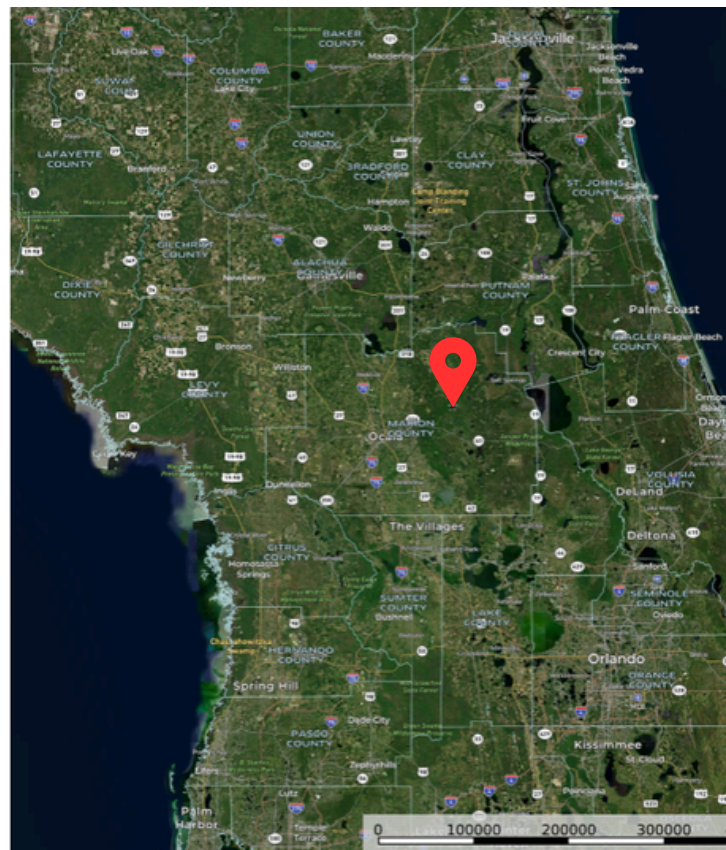


**SURROUNDED BY OCALA
NATIONAL FOREST**

0 200 400 600 800



0 10000 20000 30000



0 100000 200000 300000

Presented By

John A. Evans, Sr. & Isabelle Updike

john@moonbeamlandco.com | isabelle@moonbeamlandco.com



MoonBeam Land Company

YOUR TRUSTED PARTNER IN FLORIDA AGRICULTURAL & LAND REAL ESTATE

Rooted in seven generations of Florida heritage, **MoonBeam Land Company** is a premier brokerage specializing in agricultural real estate, rural land transactions, and strategic investment advisory services throughout the state of Florida.

Under the leadership of **John A. Evans, Sr.**, Licensed Real Estate Broker, our team brings over 17 years of proven market expertise. To date, we have successfully closed more than **\$646 million** in transactions, representing over **90,200 acres** of land across Florida.

Inquire for More Details

For personalized assistance, please contact:



John A. Evans, Sr.

President & Broker
(407) 947-3335
john@moonbeamlandco.com



Isabelle Updike

Land Sales Associate
(863) 978-8068
isabelle@moonbeamlandco.com