

For Lease  
1,178-2,938 SF  
Office Space



## Boynton Beach Professional Center

1325 South Congress Avenue, Boynton Beach, FL 33426

### Property Features

- Move-in ready space
- Serene setting with courtyard and lush, tropical landscaping
- Improvement allowance available
- Just 1.5 miles west of I-95 and 3 miles from Bethesda Hospital East
- Central to numerous shopping, dining, and banking options – just 1.5 miles from the Boynton Beach Mall, Boynton Town Center, and more

### Key Features:



Minutes from I-95,  
the Florida Turnpike &  
numerous retail amenities



Outstanding parking



Direct suite access -  
no shared lobbies



Institutionally national  
recognized ownership

For more information

**Lesley Sheinberg**, Managing Director  
561 254 7810 | [lsheinberg@mhcreal.com](mailto:lsheinberg@mhcreal.com)

**Jason L. Sundook**, SIOR  
Principal | [jsundook@mhcreal.com](mailto:jsundook@mhcreal.com)



**FOR LEASE: BOYNTON BEACH PROFESSIONAL CENTER**

**Fantastic Location. Great Rates. Ample Parking.**



**FANTASTIC OFFICE SPACE NEAR THE BEST OF BOYNTON BEACH**

---

**Property:** 1325 South Congress Avenue, Boynton Beach, FL 33426

---

**Available Space:** Suite 200 – 1,518 SF  
Suite 205 – 1,178 SF  
Suite 212 – 2,938 SF

---

**Rental Rate:** \$32.00/SF Gross

---

**Parking:** Ample, free surface parking (5:1,000)

---

**For More Information:**

Lesley Sheinberg | [lsheinberg@mhcreal.com](mailto:lsheinberg@mhcreal.com)  
Jason L. Sundook, SIOR | [jsundook@mhcreal.com](mailto:jsundook@mhcreal.com)

 561 471 8000

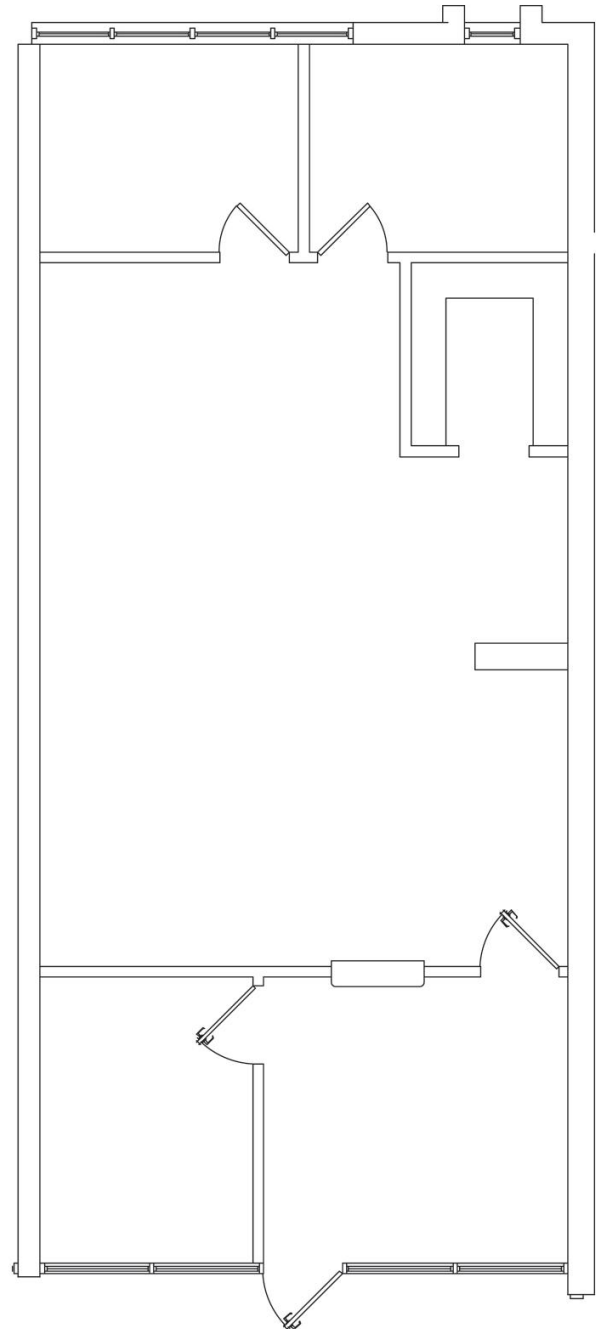
 [www.mhcreal.com](http://www.mhcreal.com)

# FOR LEASE: BOYNTON BEACH PROFESSIONAL CENTER

## Flexible Layout | Direct Entry | Efficient Space

### Suite 205 ±1,178 SF

- Thoughtful layout featuring private offices and a central workspace



### For More Information:

Lesley Sheinberg | [lsheinberg@mhcreal.com](mailto:lsheinberg@mhcreal.com)  
Jason L. Sundook, SIOR | [jsundook@mhcreal.com](mailto:jsundook@mhcreal.com)

 561 471 8000



[www.mhcreal.com](http://www.mhcreal.com)