

SUNPORT COMMERCE CENTER I

230 SUNPORT LANE, ORLANDO, FL 32809



100% HVAC

CONVENIENT ACCESS
TO SR 528 AND FLORIDA'S TURNPIKE

11,200 SF AVAILABLE SUITE 400

SPACE HIGHLIGHTS

ASKING RATE

\$16.25/SF NNN

OPEX*

\$3.23/PSF

MONTHLY RATE

\$18,181.33/MO

WAREHOUSE SF

9,514 SF

OFFICE SF

1,686 SF

CLEAR HEIGHT

24'

LOADING DOORS

(4) DOCK DOORS

ZONING

IND-4

PARKING RATIO

1.63/1,000

FIRE SUPPRESSION

CLASS IV

YEAR BUILT

2000

AVAILABILITY

30 DAYS

**Denotes Estimated Operating Expenses for 2026*

CONTACT INFORMATION

TAYLOR ZAMBITO

Senior Director
+1 407 541 4409
taylor.zambito@cushwake.com

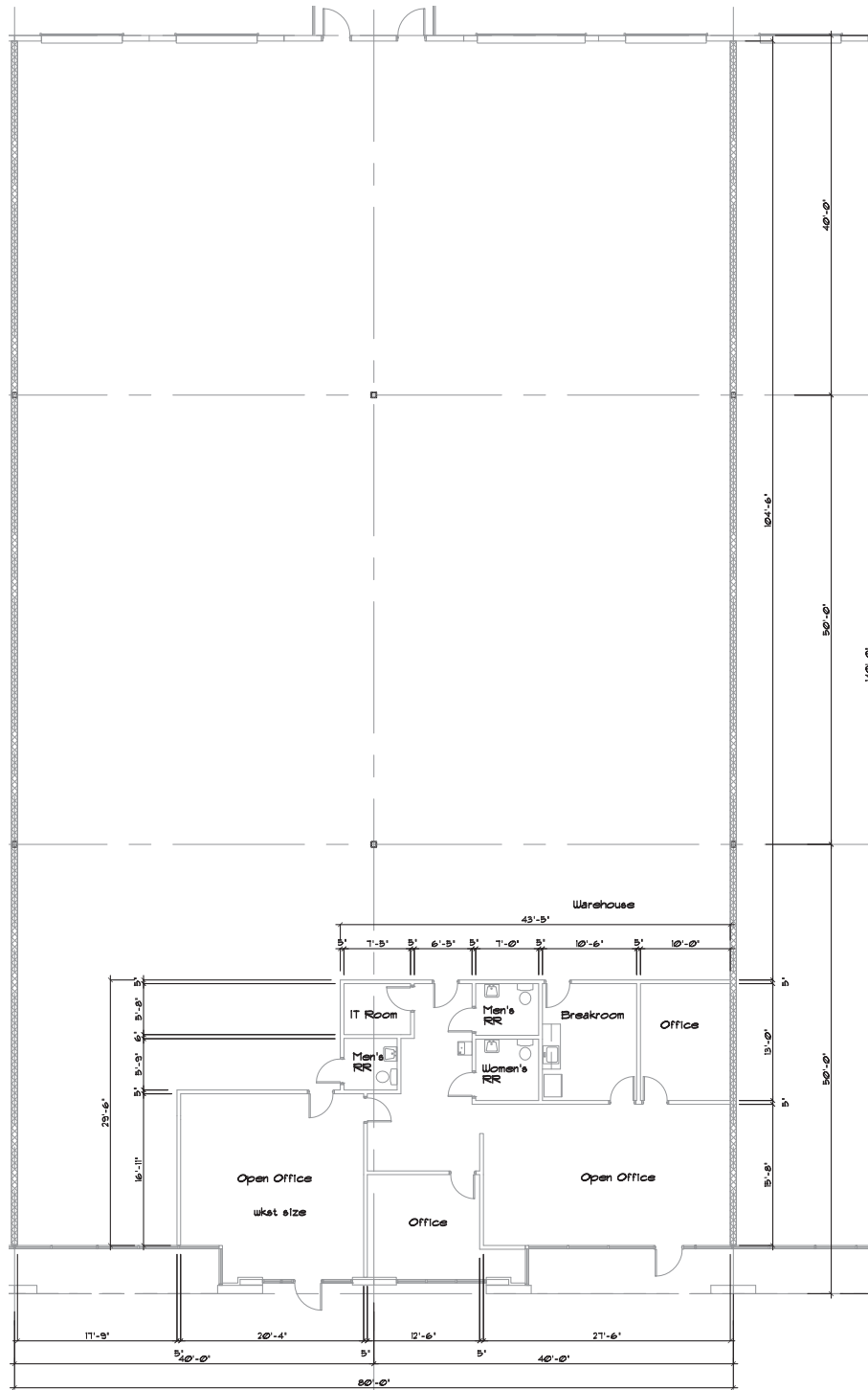
RYAN HUBBARD

Director
+1 407 541 4390
ryan.hubbard@cushwake.com



FLOOR PLAN

SUITE 400



CONTACT INFORMATION

TAYLOR ZAMBITO

Senior Director
 +1 407 541 4409
 taylor.zambito@cushwake.com

RYAN HUBBARD

Director
 +1 407 541 4390
 ryan.hubbard@cushwake.com

