

# Property Summary



## PROPERTY DESCRIPTION

Lightle Beckner Robison Inc is pleased to offer +/-15,000 sq ft for lease at a new retail/residential center in Viera on Stadium Parkway. Conveniently located close to the new Goddard School and many residential developments.

The building will have seven (7) units, five (5) interior spaces will be +/-2,000 sq ft each and the two (2) end caps which will be +/-2,500 sq ft each.

The building will be delivered to the tenant as a dark shell. Drive through and outdoor seating available for restaurant end caps.

## PROPERTY HIGHLIGHTS

- Top-selling master-planned community:
- Ranked 10th by RCLCO for 2024
- Consistently within top 25 (23rd by John Burns in 2024; top 15/50 in prior years)
- Brevard County quality-of-life:
- Ranked 10th in Florida among counties by MoneyInc, praised for schools, beaches, health care, and job opportunities

## OFFERING SUMMARY

|                  |                       |
|------------------|-----------------------|
| Lease Rate:      | \$40 - 45 SF/yr (NNN) |
| Number of Units: | 7                     |
| Available SF:    | 2,012 - 2,507 SF      |
| Lot Size:        | 2.94 Acres            |
| Building Size:   | 15,000 SF             |

| DEMOGRAPHICS      | 1 MILE    | 3 MILES   | 5 MILES   |
|-------------------|-----------|-----------|-----------|
| Total Households  | 529       | 10,955    | 28,789    |
| Total Population  | 1,499     | 26,665    | 69,789    |
| Average HH Income | \$154,664 | \$136,233 | \$134,595 |



### JEFFERY T. ROBISON, CCIM

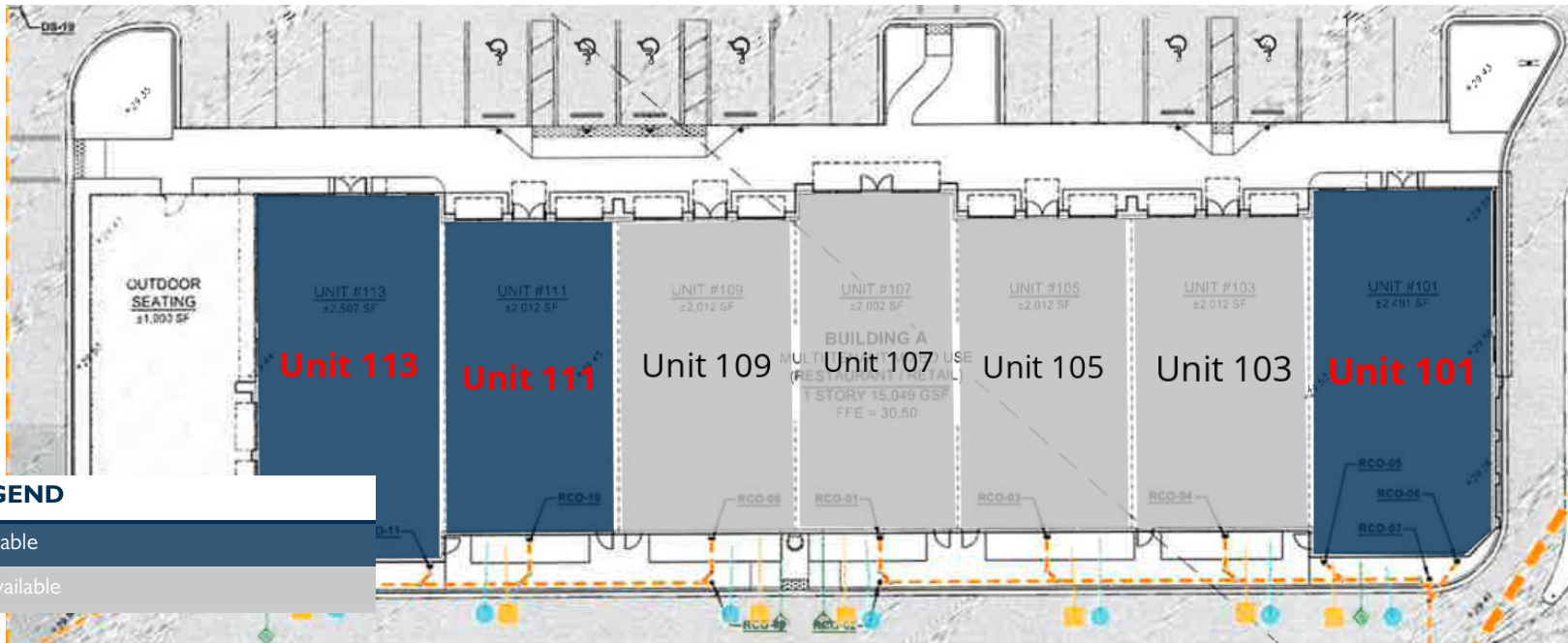
President | Broker  
321.722.0707 x13  
Jeff@TeamLBR.com

### VITOR DE SOUSA, CCIM

Retail Sales & Leasing  
321.722.0707 x15  
vitor@teamlbr.com

70 W. Hibiscus Blvd., Melbourne, FL 32901 • 321.722.0707 • [teamlbr.com](http://teamlbr.com)

Information contained herein has been obtained through sources deemed reliable but cannot be guaranteed as to its accuracy. A purchaser or lessee is expected to verify all information to his/her own satisfaction. Zoning information subject to change and not warranted. Always confirm current requirements with local governing agencies.



**LEGEND**

- Available
- Unavailable

**LEASE INFORMATION**

|              |                  |             |                   |
|--------------|------------------|-------------|-------------------|
| Lease Type:  | NNN              | Lease Term: | Negotiable        |
| Total Space: | 2,012 - 2,507 SF | Lease Rate: | \$40 - \$45 SF/yr |

**AVAILABLE SPACES**

| SUITE    | TENANT    | SIZE     | TYPE | RATE          | DESCRIPTION                      |
|----------|-----------|----------|------|---------------|----------------------------------|
| Unit 101 | Available | 2,491 SF | NNN  | \$45.00 SF/yr | Restaurant space with drive-thru |



**JEFFERY T. ROBISON, CCIM**  
 President | Broker  
 321.722.0707 x13  
 Jeff@TeamLBR.com

**VITOR DE SOUSA, CCIM**  
 Retail Sales & Leasing  
 321.722.0707 x15  
 vitor@teamlbr.com

70 W. Hibiscus Blvd., Melbourne, FL 32901 • 321.722.0707 • [teamlbr.com](http://teamlbr.com)

Information contained herein has been obtained through sources deemed reliable but cannot be guaranteed as to its accuracy. A purchaser or lessee is expected to verify all information to his/her own satisfaction. Zoning information subject to change and not warranted. Always confirm current requirements with local governing agencies.

# Plans

| SUITE    | TENANT    | SIZE     | TYPE | RATE          | DESCRIPTION                                 |
|----------|-----------|----------|------|---------------|---|
| Unit 111 | Available | 2,012 SF | NNN  | \$40.00 SF/yr | -   |
| Unit 113 | Available | 2,507 SF | NNN  | \$45.00 SF/yr | Restaurant space with outdoor patio seating |



**JEFFERY T. ROBISON, CCIM**

President | Broker  
321.722.0707 x13  
Jeff@TeamLBR.com

**VITOR DE SOUSA, CCIM**

Retail Sales & Leasing  
321.722.0707 x15  
vitor@teamlbr.com

70 W. Hibiscus Blvd., Melbourne, FL 32901 • 321.722.0707 • [teamlbr.com](http://teamlbr.com)

Information contained herein has been obtained through sources deemed reliable but cannot be guaranteed as to its accuracy. A purchaser or lessee is expected to verify all information to his/her own satisfaction. Zoning information subject to change and not warranted. Always confirm current requirements with local governing agencies.



**JEFFERY T. ROBISON, CCIM**

President | Broker  
321.722.0707 x13  
Jeff@TeamLBR.com

**VITOR DE SOUSA, CCIM**

Retail Sales & Leasing  
321.722.0707 x15  
vitor@teamlbr.com

70 W. Hibiscus Blvd., Melbourne, FL 32901 • 321.722.0707 • [teamlbr.com](http://teamlbr.com)

**Additional Photos**



Stadium Square | Pineda Blvd & Stadium Pkwy, Viera, FL 32940



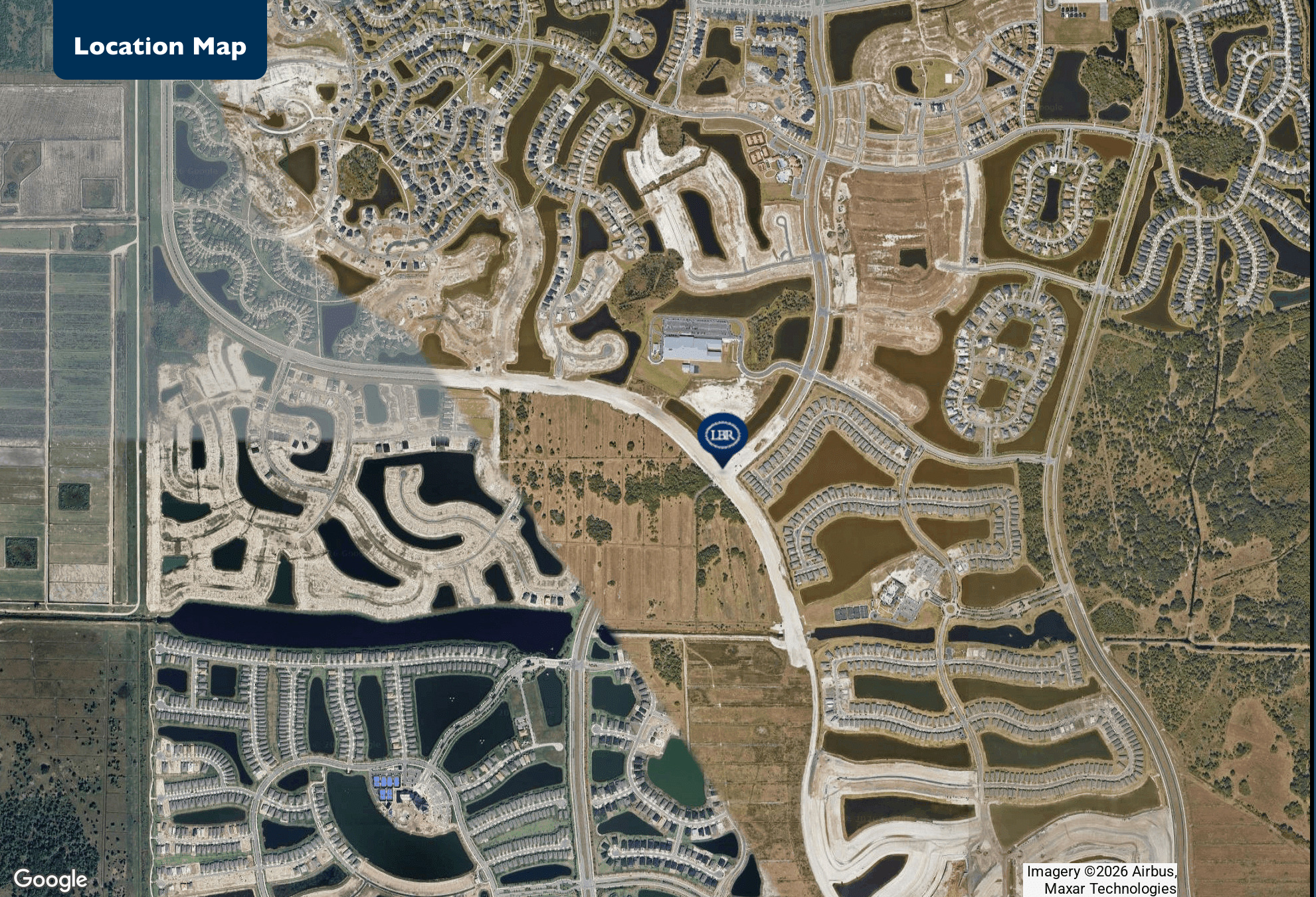
**JEFFERY T. ROBISON, CCIM**  
 President | Broker  
 321.722.0707 x13  
 jeff@TeamLBR.com

**VITOR DE SOUSA, CCIM**  
 Retail Sales & Leasing  
 321.722.0707 x15  
 vitor@teamlbr.com

70 W. Hibiscus Blvd., Melbourne, FL 32901 • 321.722.0707 • [teamlbr.com](http://teamlbr.com)

Information contained herein has been obtained through sources deemed reliable but cannot be guaranteed as to its accuracy. A purchaser or lessee is expected to verify all information to his/her own satisfaction. Zoning information subject to change and not warranted. Always confirm current requirements with local governing agencies.

# Location Map



Stadium Square | Pineda Blvd & Stadium Pkwy, Viera, FL 32940

Imagery ©2026 Airbus,  
Maxar Technologies



LIGHTLE  
BECKNER  
ROBISON

INCORPORATED  
COMMERCIAL REAL ESTATE SERVICES

**JEFFERY T. ROBISON, CCIM**

President | Broker  
321.722.0707 x13  
Jeff@TeamLBR.com

**VITOR DE SOUSA, CCIM**

Retail Sales & Leasing  
321.722.0707 x15  
vitor@teamlbr.com

70 W. Hibiscus Blvd., Melbourne, FL 32901 • 321.722.0707 • [teamlbr.com](http://teamlbr.com)

Information contained herein has been obtained through sources deemed reliable but cannot be guaranteed as to its accuracy. A purchaser or lessee is expected to verify all information to his/her own satisfaction. Zoning information subject to change and not warranted. Always confirm current requirements with local governing agencies.

# Demographics Map & Report

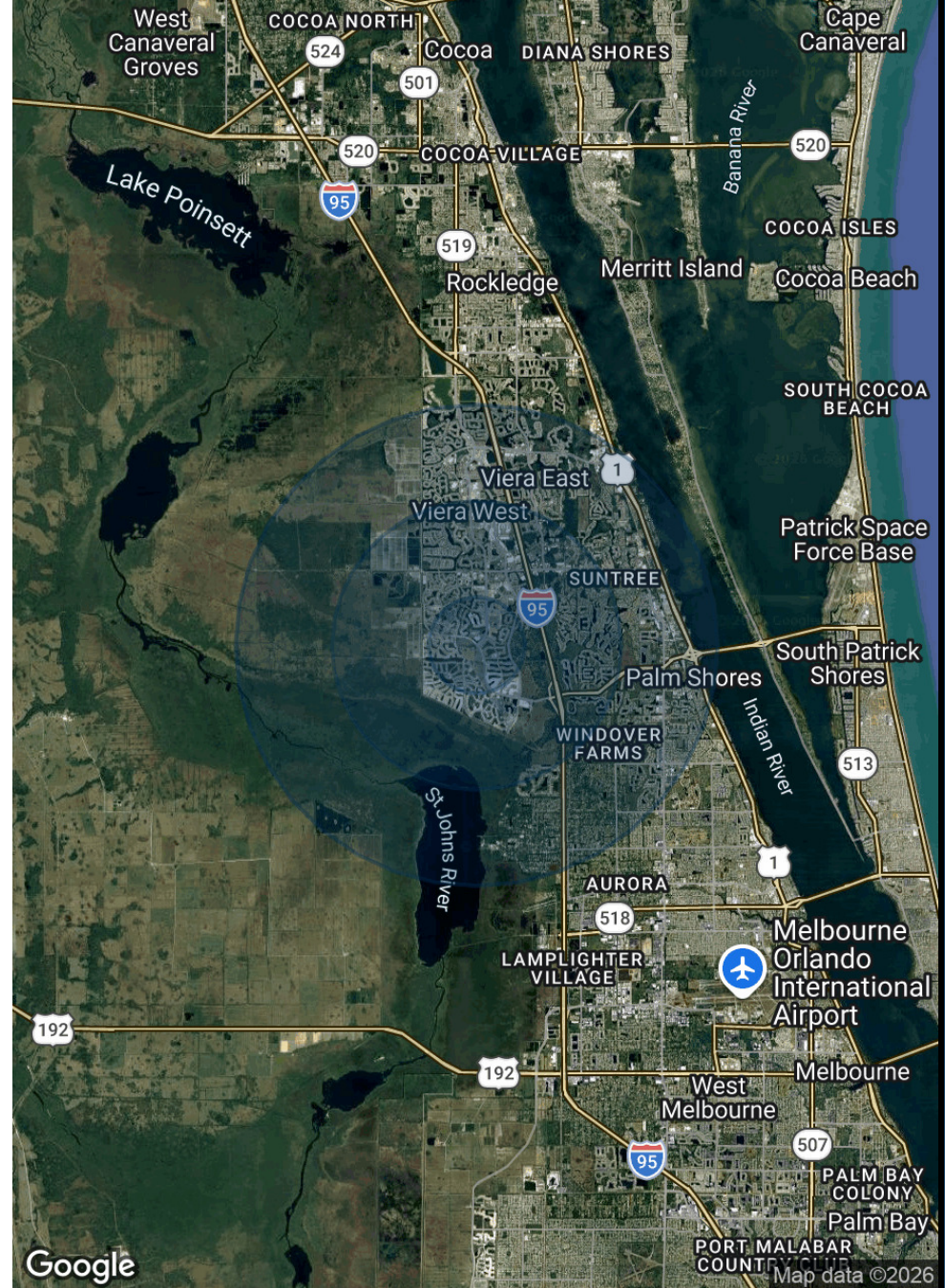
## POPULATION

|                      | 1 MILE | 3 MILES | 5 MILES |
|----------------------|--------|---------|---------|
| Total Population     | 1,499  | 26,665  | 69,789  |
| Average Age          | 40     | 48      | 48      |
| Average Age (Male)   | 39     | 47      | 47      |
| Average Age (Female) | 41     | 48      | 48      |

## HOUSEHOLDS & INCOME

|                     | 1 MILE    | 3 MILES   | 5 MILES   |
|---------------------|-----------|-----------|-----------|
| Total Households    | 529       | 10,955    | 28,789    |
| # of Persons per HH | 2.8       | 2.4       | 2.4       |
| Average HH Income   | \$154,664 | \$136,233 | \$134,595 |
| Average House Value | \$620,776 | \$555,760 | \$512,988 |

Demographics data derived from AlphaMap



Stadium Square | Pineda Blvd & Stadium Pkwy, Viera, FL 32940



### JEFFERY T. ROBISON, CCIM

President | Broker  
321.722.0707 x13  
Jeff@TeamLBR.com

### VITOR DE SOUSA, CCIM

Retail Sales & Leasing  
321.722.0707 x15  
vitor@teamlbr.com

70 W. Hibiscus Blvd., Melbourne, FL 32901 • 321.722.0707 • [teamlbr.com](http://teamlbr.com)

Information contained herein has been obtained through sources deemed reliable but cannot be guaranteed as to its accuracy. A purchaser or lessee is expected to verify all information to his/her own satisfaction. Zoning information subject to change and not warranted. Always confirm current requirements with local governing agencies.