

For Lease
±1,637-6,218 SF
Office Space



Commerce Pointe Silver

1818 S Australian Avenue
West Palm Beach, FL 33409

Property Features

- Fantastic leasing opportunity near Downtown West Palm Beach
- Four-story office building with a beautiful atrium lobby and move-in ready suites
- Excellent access to arterial roads
- Central Palm Beach County location with great airport access and minutes from Downtown West Palm Beach
- Near popular amenities like CityPlace, the Warehouse District, Town of Palm Beach, the Governmental Center, and more

Key Features:



Great location
adjacent to I-95



Near the best of
the Palm Beaches



Lushly landscaped
with pond & lake views



Move-in ready office
suites available

For More Information:

Jason L. Sundook, SIOR

Principal | jsundook@mhcreal.com

Patrick Almand, Associate

C: 443 370 8655 | palmand@mhcreal.com



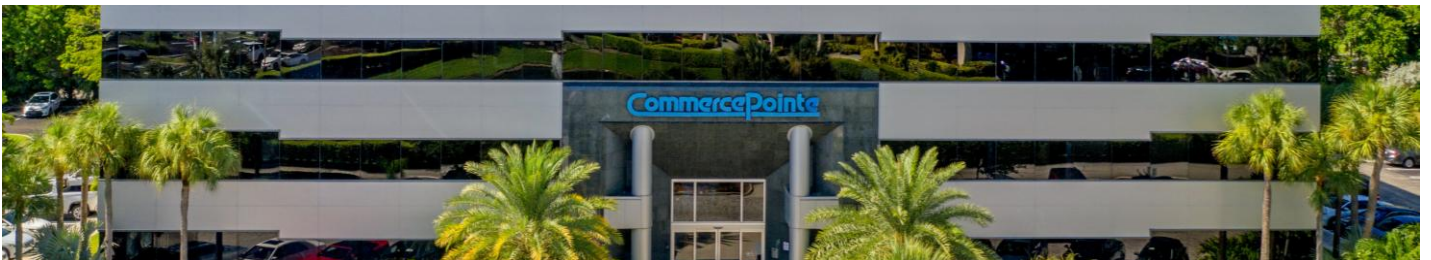
FOR LEASE: COMMERCE POINTE SILVER, WEST PALM BEACH
Move-In Ready Office Space Near Downtown & I-95



Modern Office Space
IN AN UNBEATABLE WEST PALM BEACH LOCATION

Welcome to Commerce Pointe Silver, a prime office building centrally located in West Palm Beach. The property offers lake views, meticulously maintained common areas, and a beautiful atrium lobby. Commuting is a breeze with easy access to I-95, Okeechobee Blvd., Brightline, and commuter rail.

Featuring an amazing location near the best of the Palm Beaches, move-in ready offices, and on-site property management, Commerce Pointe Silver offers high-quality workspace tailored for Palm Beach County professionals.



For More Information:

Jason L. Sundook, SIOR | jsundook@mhcreal.com

Patrick Almand | palmand@mhcreal.com

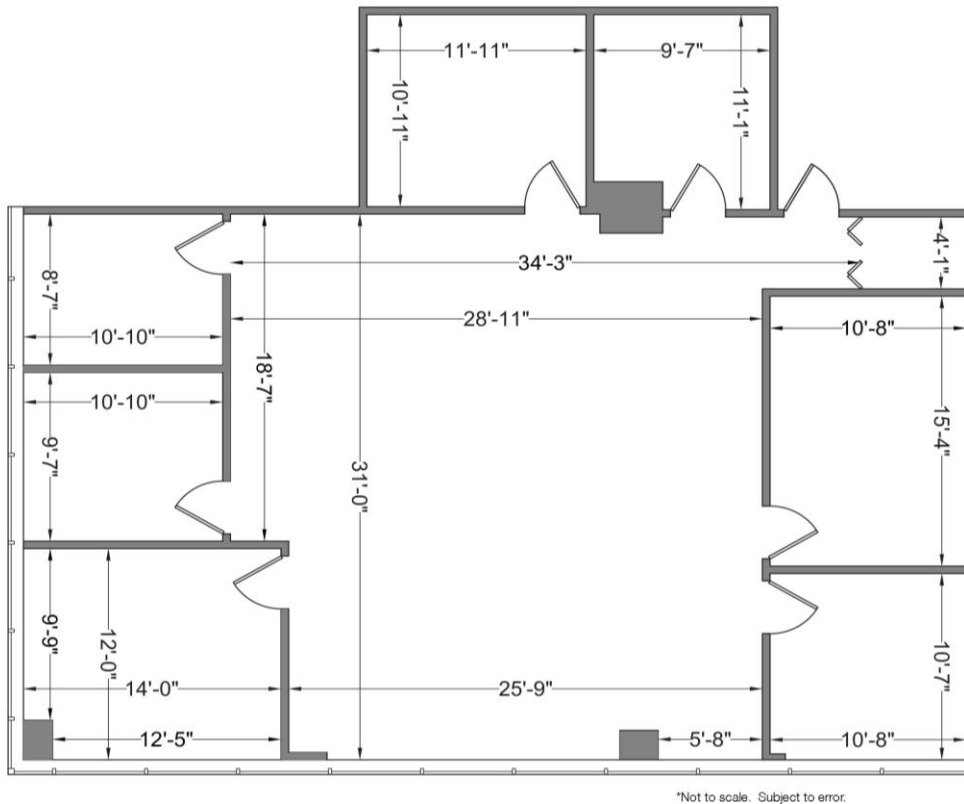


561 471 8000



www.mhcreal.com

FOR LEASE: COMMERCE POINTE SILVER, WEST PALM BEACH
Flexible Layout with Immediate Availability



SUITE 209
2,199 SF

- Spacious suite with flexible, open work area and seven private offices
- Carpeted work area with wood floors in offices



For More Information:

Jason L. Sundook, SIOR | jsundook@mhcreal.com

Patrick Almand | palmand@mhcreal.com



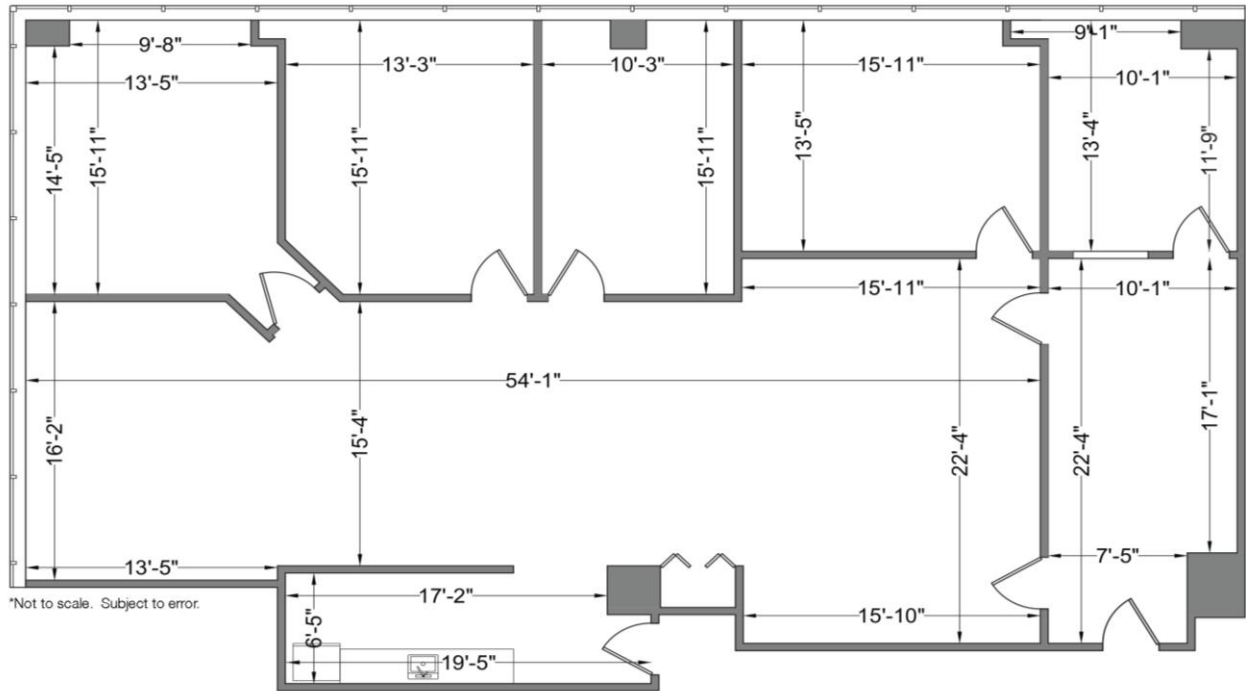
561 471 8000



www.mhcreal.com

FOR LEASE: COMMERCE POINTE SILVER, WEST PALM BEACH

Bright, Move-In Ready Office Space



SUITE 420

2,756 SF

- Enjoy expansive water and city views in this move-in ready suite
- Efficient layout with reception/entry, five private offices, and open workspace, and kitchen area



TAKE ADVANTAGE OF THIS STRATEGIC LOCATION & MOVE-IN READY SUITES

561 471 8000

For More Information:

Jason L. Sundook, SIOR | jsundook@mhcreal.com

Patrick Almand | palmand@mhcreal.com



561 471 8000



www.mhcreal.com