

For Lease

# Westpointe Plaza Office Space

814 SF | Contact Broker



## 4879 Palm Coast Pkwy NW, Suite 5

Palm Coast, Florida 32137

### Property Highlights

- Professional office in Westpointe Plaza
- Frontage on Palm Coast Pkwy, the main road leading from I-95
- Individual, private entrance with 24/7 access
- Well laid-out floor plan with open work area/potential lobby, 4 private offices, kitchenette and restroom
- Office is fully furnished with 6 workstations and computers included; 1 large printer & 3 desk printers available for lease; VOIP phone system for purchase
- Secure space with Alarm Pro Security system
- Great location close to AdventHealth - perfect for a medical office
- Well-suited for any professional office use
- Shopping, grocery and restaurants close by



Lease Rate Dependent  
Upon Lease Term

Lock Box in Place - Contact  
Broker for Access

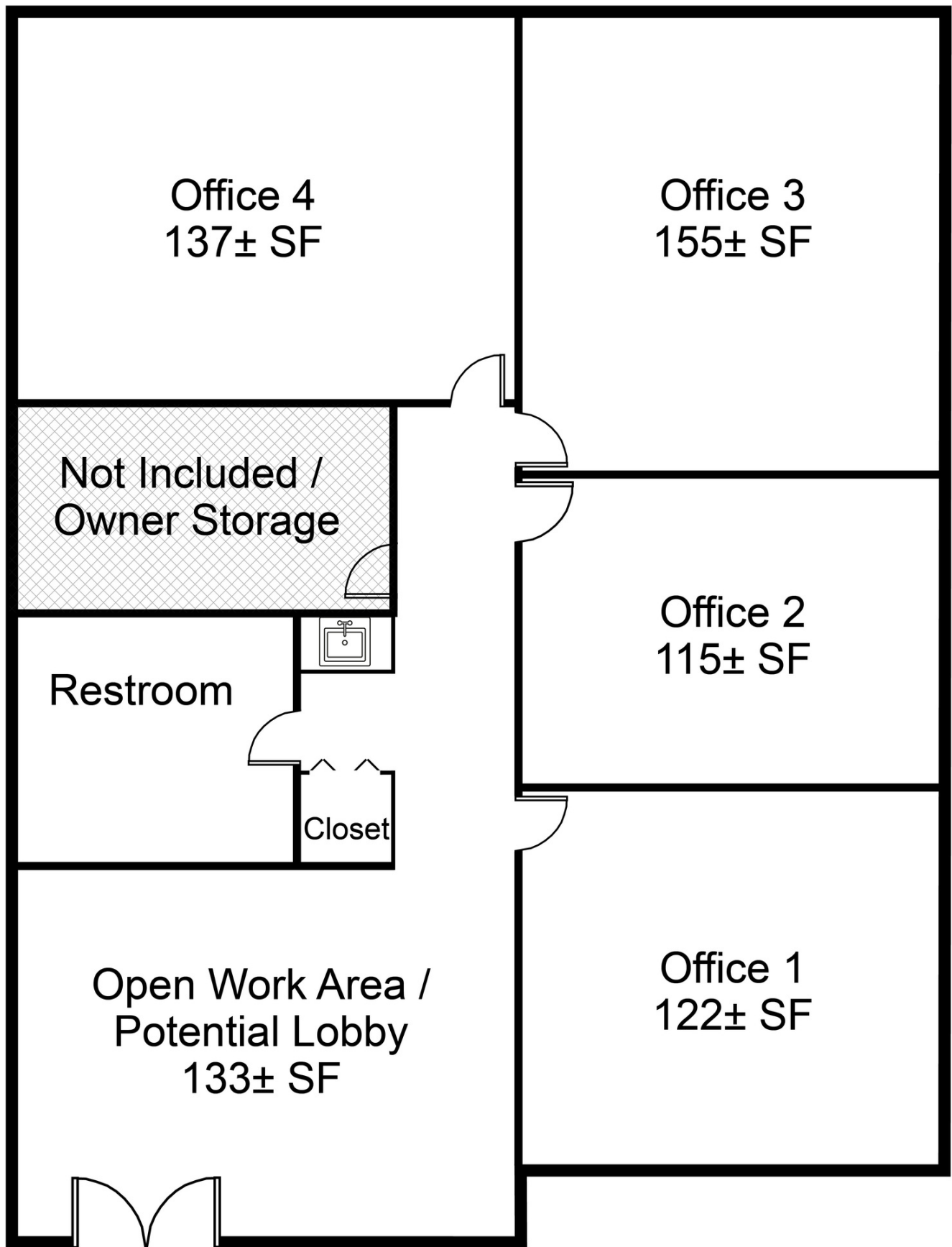
For more information

**Sandi Harrison**

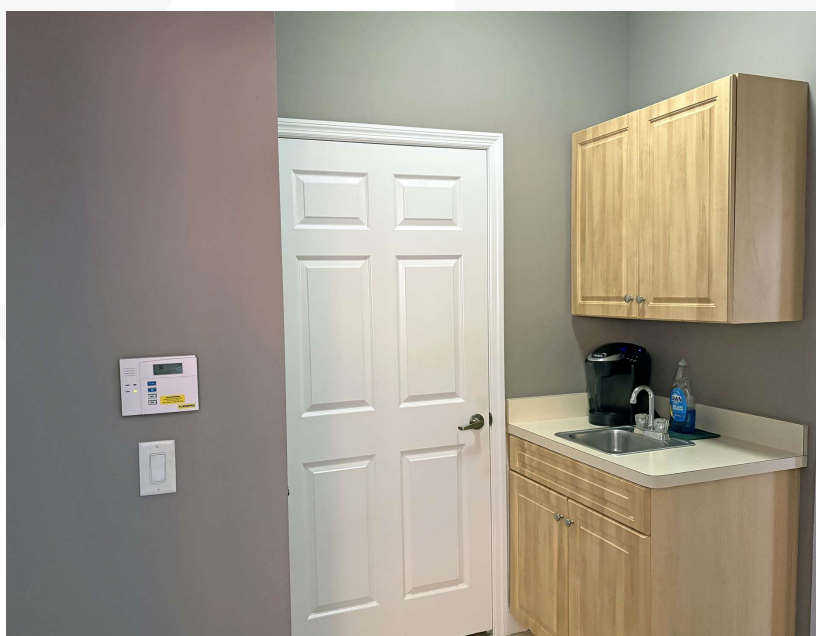
O: 407 949 0751

sharrison@realvest.com

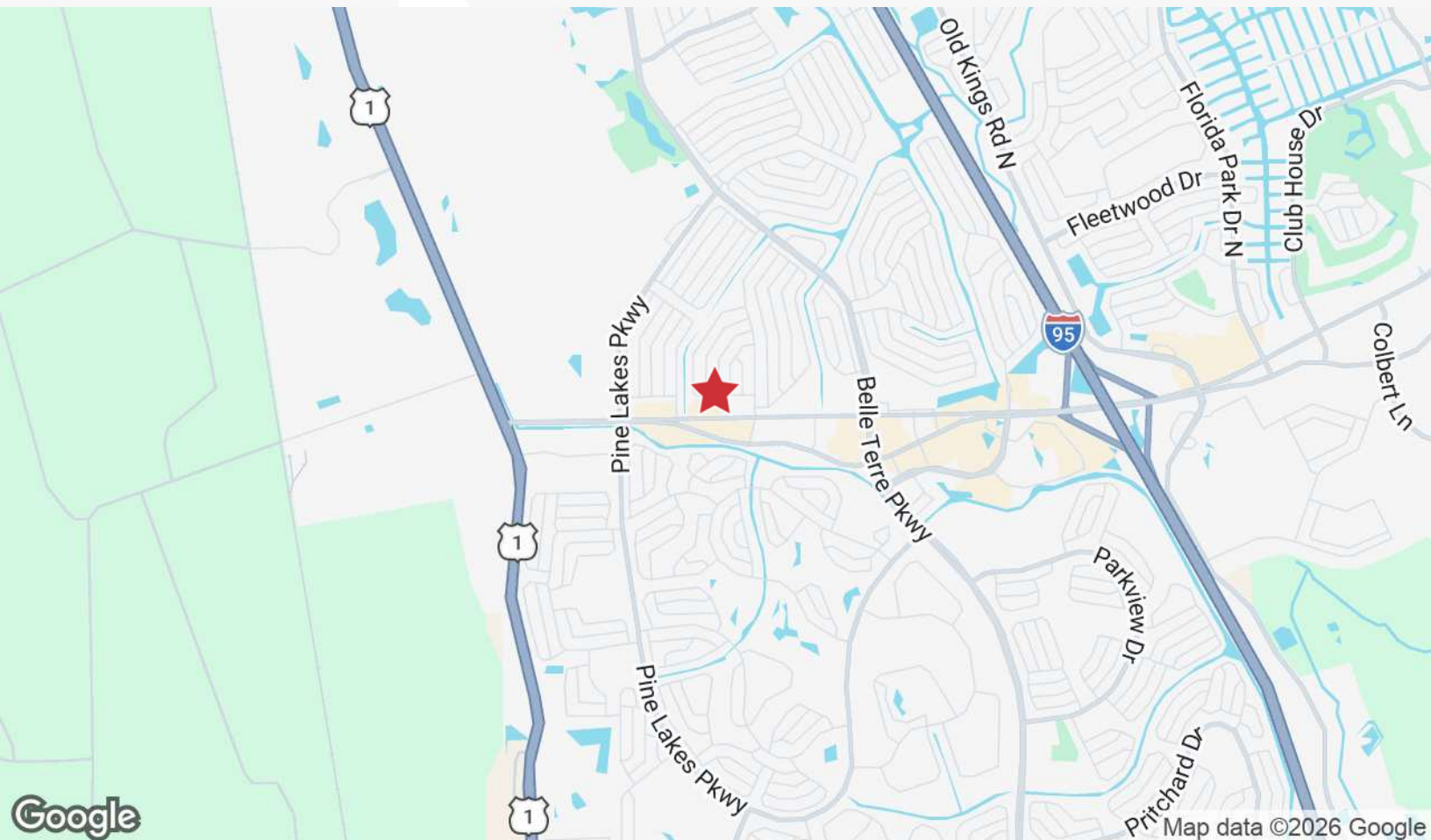
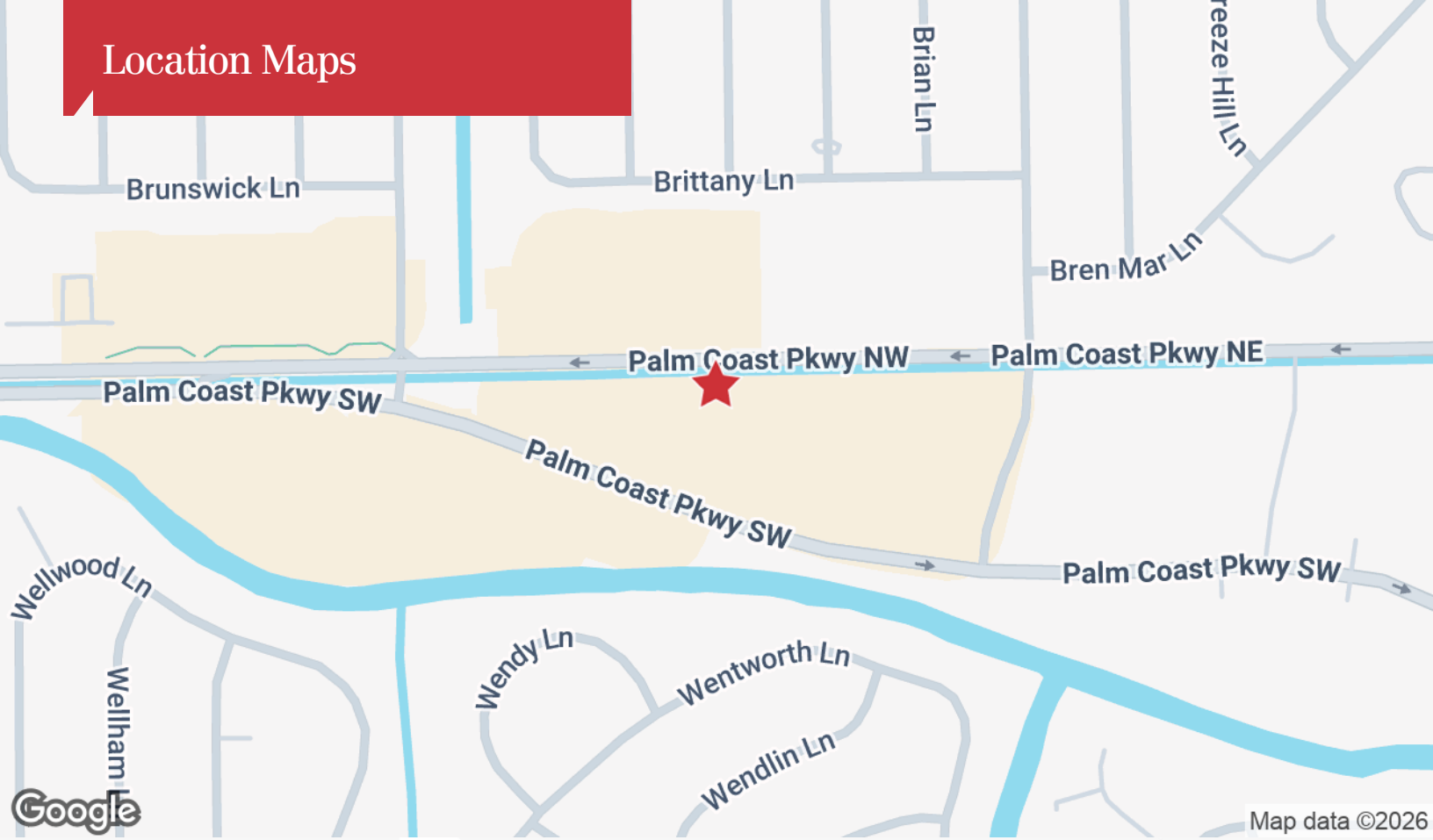
# Floor Plan



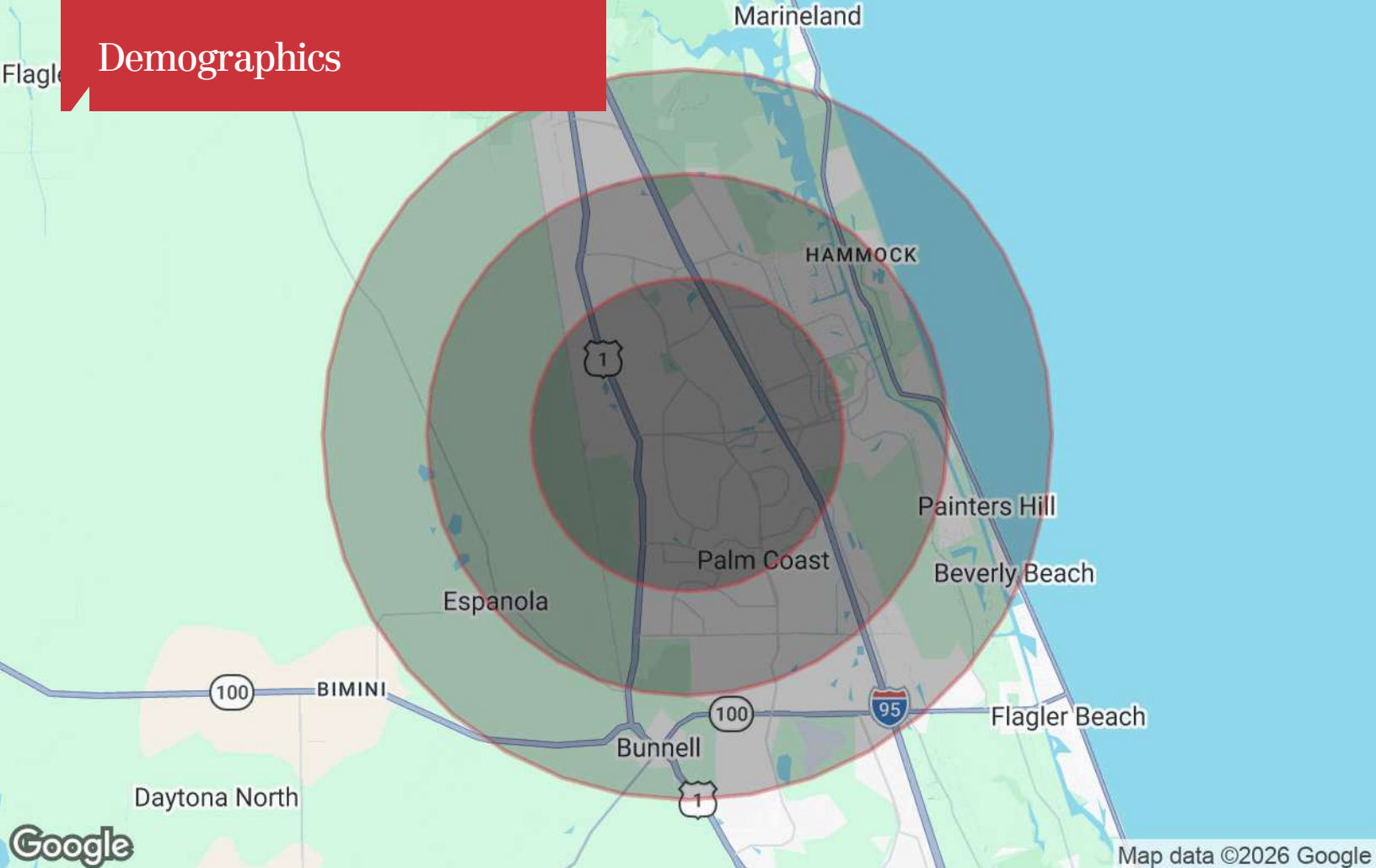
# Interior Photos



# Location Maps



# Demographics



## Population

	3 Miles	5 Miles	7 Miles
TOTAL POPULATION	42,397	79,981	94,258
MEDIAN AGE	49.8	50.3	51.2
MEDIAN AGE (MALE)	47.4	48.2	49.1
MEDIAN AGE (FEMALE)	51.2	52.3	52.9

## Households & Income

	3 Miles	5 Miles	7 Miles
TOTAL HOUSEHOLDS	17,252	32,684	38,979
# OF PERSONS PER HH	2.5	2.4	2.4
AVERAGE HH INCOME	\$99,143	\$100,463	\$101,089
AVERAGE HOUSE VALUE	\$313,824	\$371,989	\$385,527

\* Demographic data derived from 2020 ACS - US Census