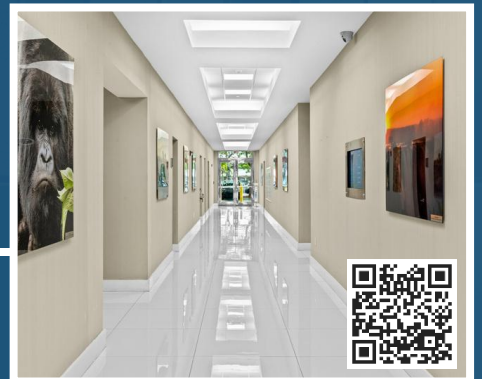




2601 Oakland

**Move-in Incentives &
Flexible Lease Terms Available!**



BOUTIQUE SPACE. CITY VIBES. NO DOWNTOWN HASSLE.

2601
Oakland



±65,000 SF
office building



FREE PARKING
in front & rear lots



WALKABLE
dining & retail



**STUNNING
VIEWS**
of the city & ocean



2601 EAST OAKLAND PARK BLVD | Fort Lauderdale, FL 33306

Located in Fort Lauderdale's prestigious Coral Ridge neighborhood, 2601 Oakland offers boutique workspace with exceptional convenience and connectivity. Surrounded by affluent neighborhoods, premier retail and dining, beach clubs, resorts, and just minutes from Downtown Fort Lauderdale and Las Olas, it's where business meets lifestyle.

- High-speed fiber optics
- Impact glass
- Evening security
- Easy access to main roads via US-1
- Locally owned & professionally managed

2601OaklandPark.com
mhcreal.com





Oakland
2601 E OAKLAND



DOWNTOWN VIBE. SUBURBAN EASE.

Enjoy the prestige of a prime location - without the price tag or parking headaches. Situated at the corner of East Oakland Park Blvd and US-1, 2601 Oakland offers easy access to everything Fort Lauderdale has to offer, with free parking and a less stressful commute.

E SUNRISE BLVD



Fort
Lauderdale

E LAS OLAS BLVD



FORT LAUDERDALE/
HOLLYWOOD INTERNATIONAL
AIRPORT

Premier Dining

- Shooters Waterfront
- Ruth's Chris Steakhouse
- The Capital Grille
- J. Alexander's Restaurant
- Mastro's Ocean Club
- J. Mark's Restaurant

Retail

- Coral Ridge Mall
- Target
- Publix
- Trader Joe's
- Whole Foods Market
- The Galleria

Venues

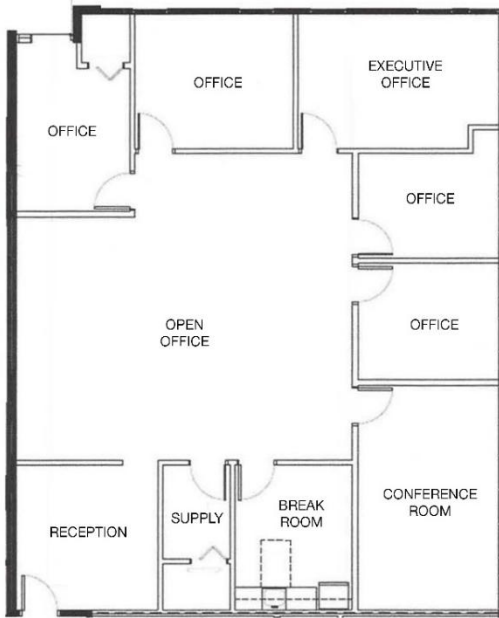
- Culture Room
- Broward Center
- Museum of Discovery & Science
- NSU Art Museum
- FATVillage Arts District
- Las Olas District

Hotels

- Pelican Grand Beach Resort
- Courtyard by Marriott
- Ocean Manor Beach Resort
- Sonesta Fort Lauderdale Beach
- W Fort Lauderdale
- The Westin

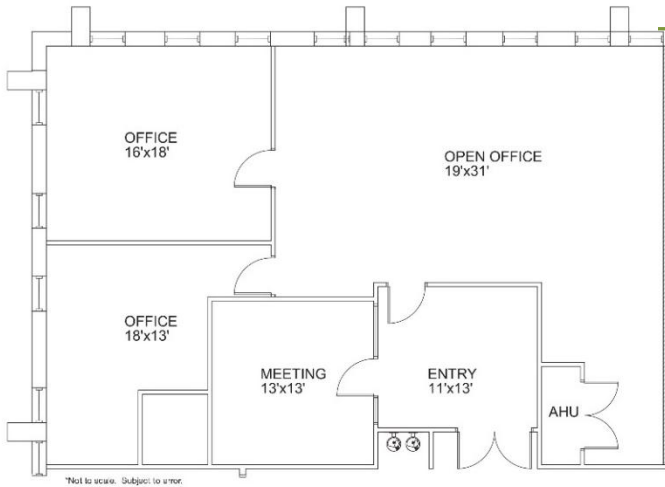


CHECK OUT THESE FEATURED SUITES



Suite 303 | ±2,473 SF

Clean, modern space with open work areas, private offices, & a kitchenette.



Suite 500 | ±2,138 SF

Thoughtfully designed with a conference room, private offices, & open work areas.



YOUR LEASING TEAM:

RICHARD BROCKNEY, Director
561 213 8449 | rbrockney@mhcreal.com

LAUREN LAM, Associate
561 252 4290 | llam@mhcreal.com

**NAI Merin Hunter
Codman, Inc.**

Commercial Real Estate Services, Worldwide.

1601 Forum Place, Suite 700
West Palm Beach, FL 33401
561 471 8000 | mhcreal.com



NO WARRANTY OR REPRESENTATION, EXPRESS OR IMPLIED, IS MADE AS TO THE ACCURACY OF THE INFORMATION CONTAINED HEREIN, AND THE SAME IS SUBMITTED SUBJECT TO ERRORS, OMISSIONS, CHANGE OF PRICE, OR WITHDRAWAL WITHOUT NOTICE.