

PREMIER OFFICE SPACE

PRESTIGIOUS PGA NATIONAL SETTING WITH
DIRECT TURNPIKE ACCESS AND LAKE VIEWS



7111 & 7121 FAIRWAY DRIVE

Palm Beach Gardens, FL

 FairwayOfficeCenter.com

 561 471 8000

NAI Merin Hunter
Codman, Inc.

Commercial Real Estate Services, Worldwide.



FAIRWAY
center

Lake Views, Modern Spaces, Limitless Potential



Fairway Center

7111 & 7121 Fairway Drive
Palm Beach Gardens, FL



Property Highlights



Two, modern, four-story Class-A office buildings adjacent to the prestigious PGA National Resort



Direct access to PGA Boulevard & Florida's Turnpike, minutes from I-95



Amenities include green spaces for relaxation, ample parking with covered available, and move-in ready spaces available

Just a short drive to...



For more information

Jason Sundook, SIOR, Principal
561 471 8000 | jsundook@mhcreal.com



FOR LEASE: 7111 & 7121 FAIRWAY DRIVE, PALM BEACH GARDENS

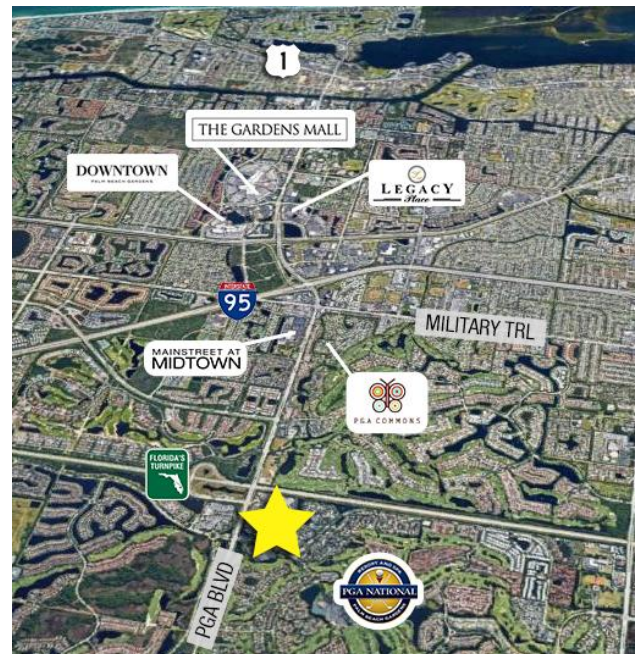
Workspace That Works For You, Near Everything



Stunning, First-Class Office Space on a Lush, 16-acre Campus

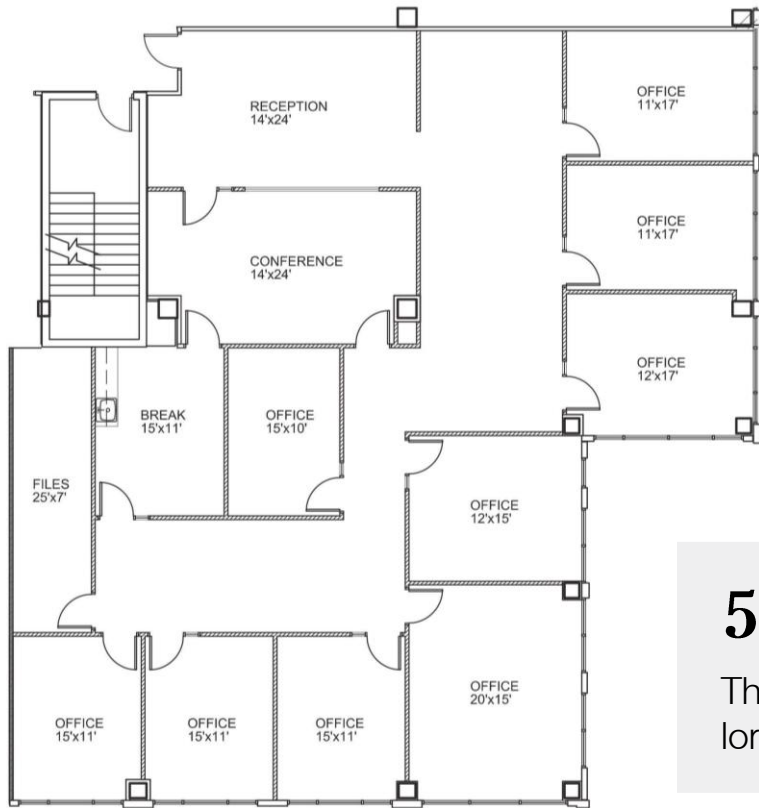
7111 & 7121 Fairway Drive are part of the prestigious Fairway Office Center, providing fantastic amenities in a prestigious location near the best of Palm Beach Gardens.

- Tropical and modern office park
- Ample parking with covered available
- Tranquil green spaces
- Close to popular shopping districts, luxurious residential communities, and country clubs



FOR LEASE: 7111 & 7121 FAIRWAY DRIVE, PALM BEACH GARDENS

Now Available: Move-In-Ready Office Suites



Not to scale. Subject to error. Furniture for display only and not included.

7111- Suite 302

4,376 SF



**VIEW
3D TOUR**

561 471 8000

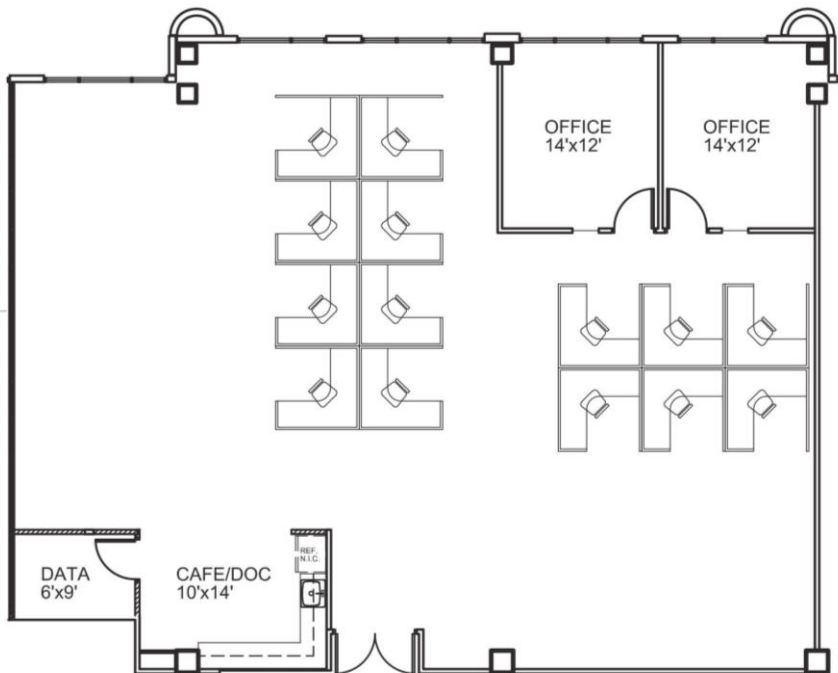
These move-in-ready suites won't last long—call for more information!

7111- Suite 410

3,378 SF



**VIEW
3D TOUR**



Furniture for illustrative purposes only. Not to scale. Subject to error.

