

PREMIER OFFICE SPACE

PRESTIGIOUS PGA NATIONAL SETTING WITH
DIRECT TURNPIKE ACCESS AND LAKE VIEWS



7108 FAIRWAY DRIVE

Palm Beach Gardens, FL

 FairwayOfficeCenter.com

 561 471 8000

NAI Merin Hunter
Codman, Inc.
Commercial Real Estate Services, Worldwide.



Lake Views, Modern Spaces, Limitless Potential



Fairway Center

7108 Fairway Drive | Palm Beach Gardens, FL



Property Highlights



Three-story high-end office building adjacent to the prestigious PGA National Resort



Direct access to PGA Boulevard & Florida's Turnpike, minutes from I-95



Secure building with ample parking and contemporary lobby, surrounded by lake views and green spaces



Within walking distance to...



For more information

Lesley Sheinberg, Managing Director
561 254 7810 | lsheinberg@mhcreal.com

Jason Sundook, SIOR, Principal
561 471 8000 | jsundook@mhcreal.com



FOR LEASE: 7108 FAIRWAY DRIVE, PALM BEACH GARDENS

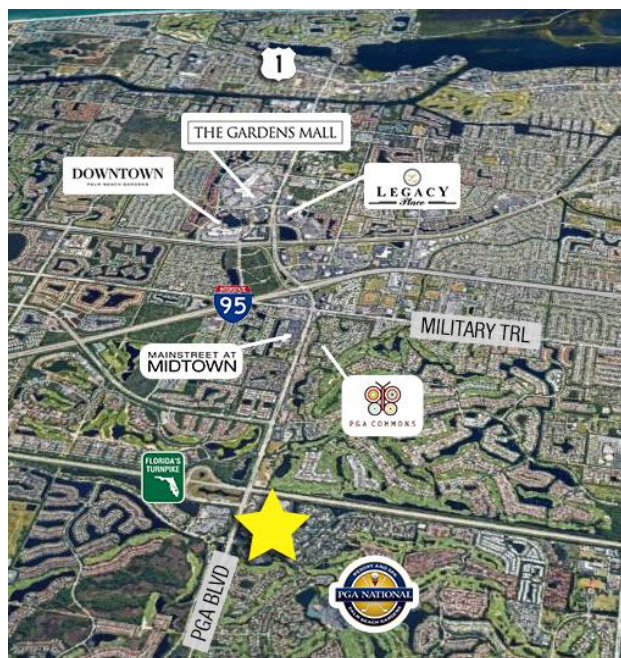
Lake View Office Space in a Resort Community



Stunning, First-Class Office Space on a Lush, 16-acre Campus

7108 Fairway Drive, one of three premier office buildings within Fairway Office Park, provides fantastic amenities in a prestigious location near the best of Palm Beach Gardens.

- Modern and bright lobby
- Ample parking with covered available
- Tranquil green spaces
- Close to popular shopping districts, luxurious residential communities, and country clubs



Lesley Sheinberg | lsheinberg@mhcreal.com
Jason Sundook, SIOR | jsundook@mhcreal.com

 561 471 8000

 www.mhcreal.com
www.FairwayOfficeCenter.com

FOR LEASE: 7108 FAIRWAY DRIVE, PALM BEACH GARDENS

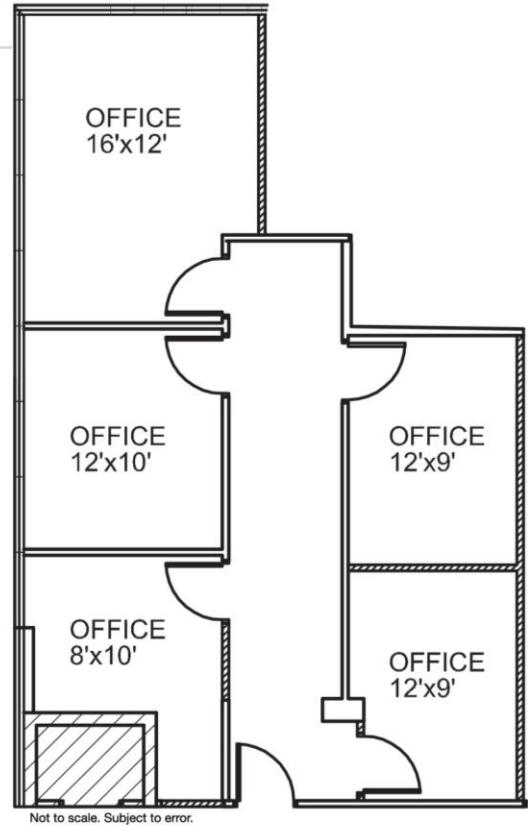
Now Available: Move-In Ready Office Suites

Suite 123 984 SF

Step into success at
7108 Fairway Drive

561 471 8000

These move-in-ready suites won't
last long—book your tour now!



Suite 330 2,422 SF

