

**SALE OR  
LEASE**

# **GREAT VISIBILITY AND COMMERCIAL ZONING**

**3305 LAKE BREEZE DRIVE  
ORLANDO, FL 32808**



## **PROPERTY HIGHLIGHTS**

- ~1.5 Acre Site with Frontage on John Young Parkway
- 2570 SF Newly Renovated Office Building
- Flexible Industrial Zoning that Allows for Multiple Use Including Bank/Medical/Office/Auto/Equipment Sales
- Abundant Parking
- High Visibility and Traffic Counts of Over 50,000 Autos Daily
- Monument Signage facing John Young Parkway
- Great Location Near Orange Blossom Trail and John Young Parkway

**Sales Price: \$2,495,000**

**Lease Rate: \$15,900/Month NNN**

This information is from sources we deem reliable and is subject to prior sale, lease, withdrawal without notice, or change in prices, rates, or conditions. No representation is made as to the accuracy of any information furnished.



## **CONTACT**

**Tim Corder**  
**407.492.0857 mobile**  
**Tim@ResultsREPartners.com**

**Results Real Estate Partners,  
LLC**  
*Licensed Commercial Real Estate Brokers*  
108 Commerce Street, Suite 200  
Lake Mary, Florida 32746

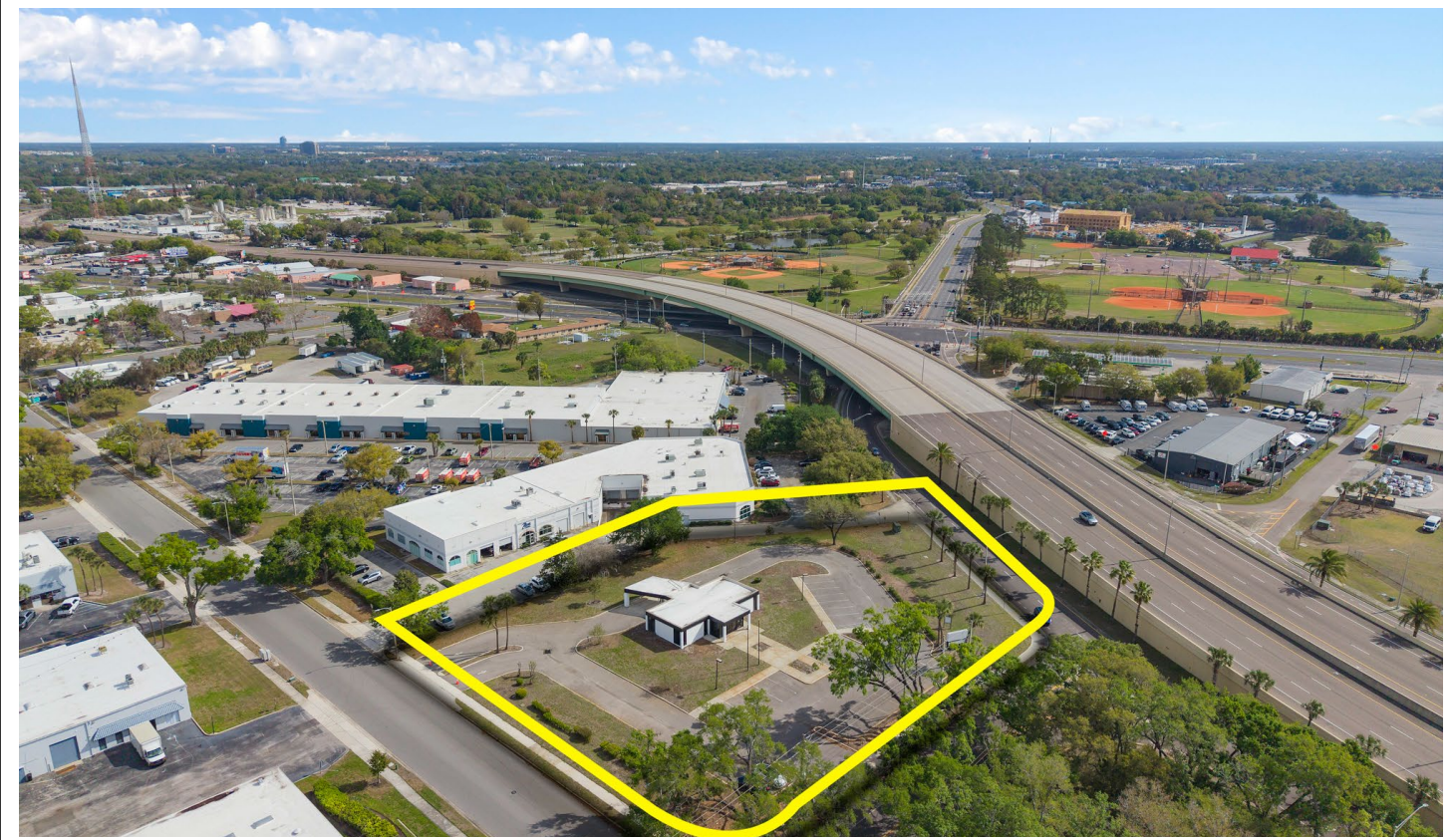
407.647.0200 main  
407.647.0205 fax

[www.ResultsREPartners.com](http://www.ResultsREPartners.com)

**SALE OR  
LEASE**

# **GREAT VISIBILITY AND COMMERCIAL ZONING**

**3305 LAKE BREEZE DRIVE  
ORLANDO, FL 32808**



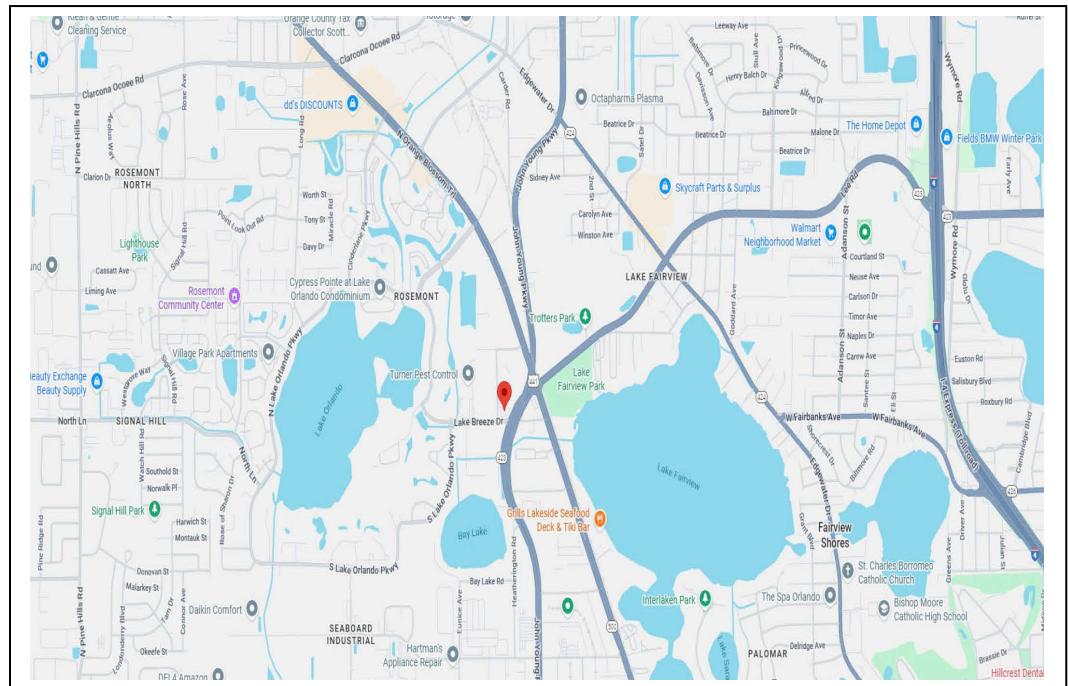
## **CONTACT**

**Tim Corder**  
**407.492.0857 mobile**  
**Tim@ResultsREPartners.com**

**Results Real Estate Partners,  
LLC**  
*Licensed Commercial Real Estate Brokers*  
108 Commerce Street, Suite 200  
Lake Mary, Florida 32746

407.647.0200 *main*  
407.647.0205 *fax*

[www.ResultsREPartners.com](http://www.ResultsREPartners.com)



This information is from sources we deem reliable and is subject to prior sale, lease, withdrawal without notice, or change in prices, rates, or conditions. No representation is made as to the accuracy of any information furnished.