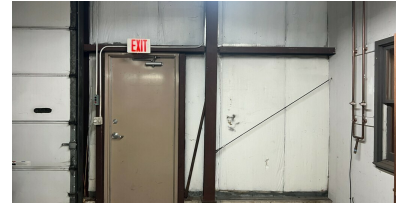
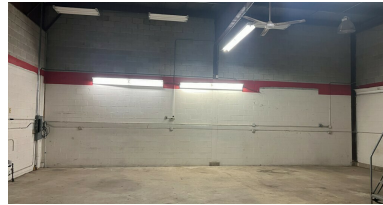


370 E. Prairie St. Ste 10
Crystal Lake, IL 60014

For Lease

MLS #12584332

INDUSTRIAL



INDUSTRIAL CONDO 2,400 SF

\$13.00 SF/YR (MG)

**INDUSTRIAL CONDO
2,400 SF**

Industrial condo featuring solid masonry construction and a 12'X14' DID. The space includes \pm 180 SF enclosed office on the first floor and 214 SF of enclosed mezzanine office, 200 AMP electrical service, and HVAC throughout, with an additional dedicated A/C unit for the mezzanine office. No loading docks.

No food manufacturing allowed.
Limited overnight parking.

Specifications

Building Size:	2,400 SF
Year Built:	1985
Office Size:	\pm 180 SF 1st Floor 214 Mezzanine
HVAC System:	GFA / AC Throughout
Electrical:	200 Amp
Sprinklers:	No
Washrooms:	1
Ceiling Height:	15-18'
Parking:	CommonGFA
DID's:	(1) 12'X14'
Dock:	0
Sewer/Water:	City/City
Zoning:	M-PUD
Taxes:	Included
PIN #:	14-33-329-002

[CLICK HERE TO VIEW OUR WEBSITE](#)

No warranty or representation is made as to the accuracy of the foregoing information. Terms of sale or lease and availability are subject to change or withdrawal without notice. This document is for information purposes only. No offer of sub-agency is being made.

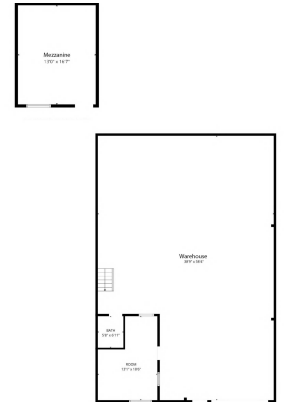
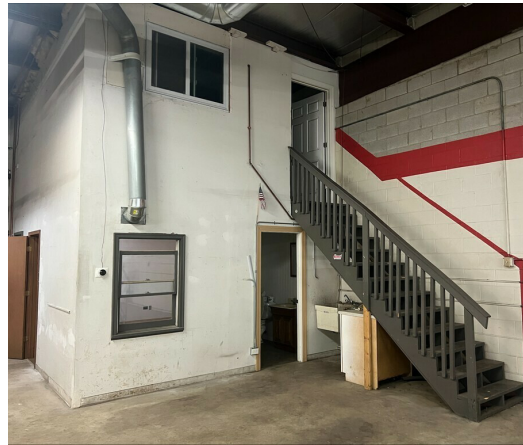
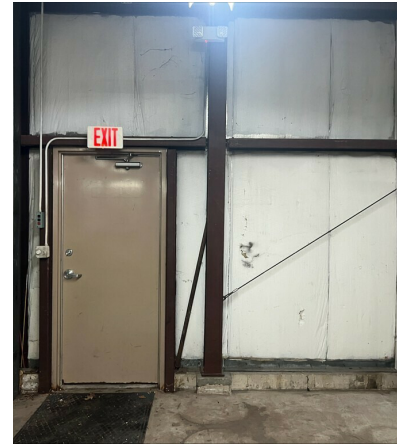
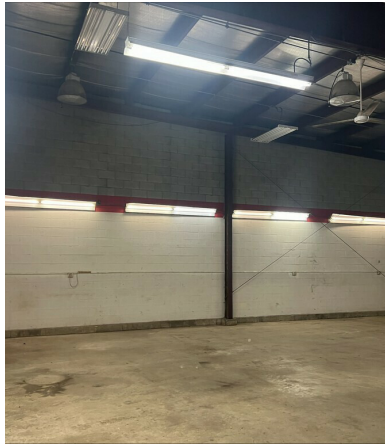


Shari Haefner
Broker Associate
ShariH@premiercommercialrealty.com
O: 847.854.2300 x18 C: 312.671.3600

370 E. Prairie St. Ste 10
Crystal Lake, IL 60014

For Lease

INDUSTRIAL



[CLICK HERE TO VIEW OUR WEBSITE](#)

No warranty or representation is made as to the accuracy of the foregoing information. Terms of sale or lease and availability are subject to change or withdrawal without notice. This document is for information purposes only. No offer of sub-agency is being made.

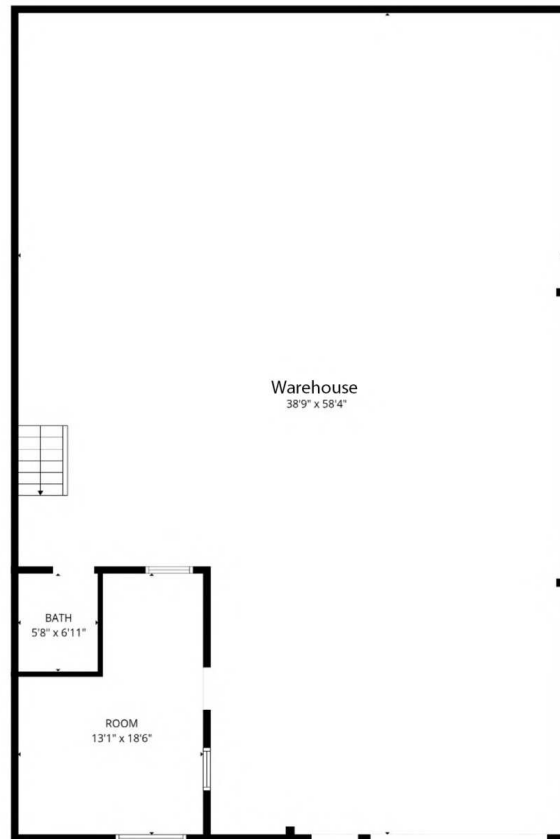


Shari Haefner
Broker Associate
ShariH@premiercommercialrealty.com
O: 847.854.2300 x18 C: 312.671.3600

370 E. Prairie St. Ste 10
Crystal Lake, IL 60014

For Lease

INDUSTRIAL



[CLICK HERE TO VIEW OUR WEBSITE](#)

No warranty or representation is made as to the accuracy of the foregoing information. Terms of sale or lease and availability are subject to change or withdrawal without notice. This document is for information purposes only. No offer of sub-agency is being made.



Shari Haefner
Broker Associate
ShariH@premiercommercialrealty.com
O: 847.854.2300 x18 C: 312.671.3600