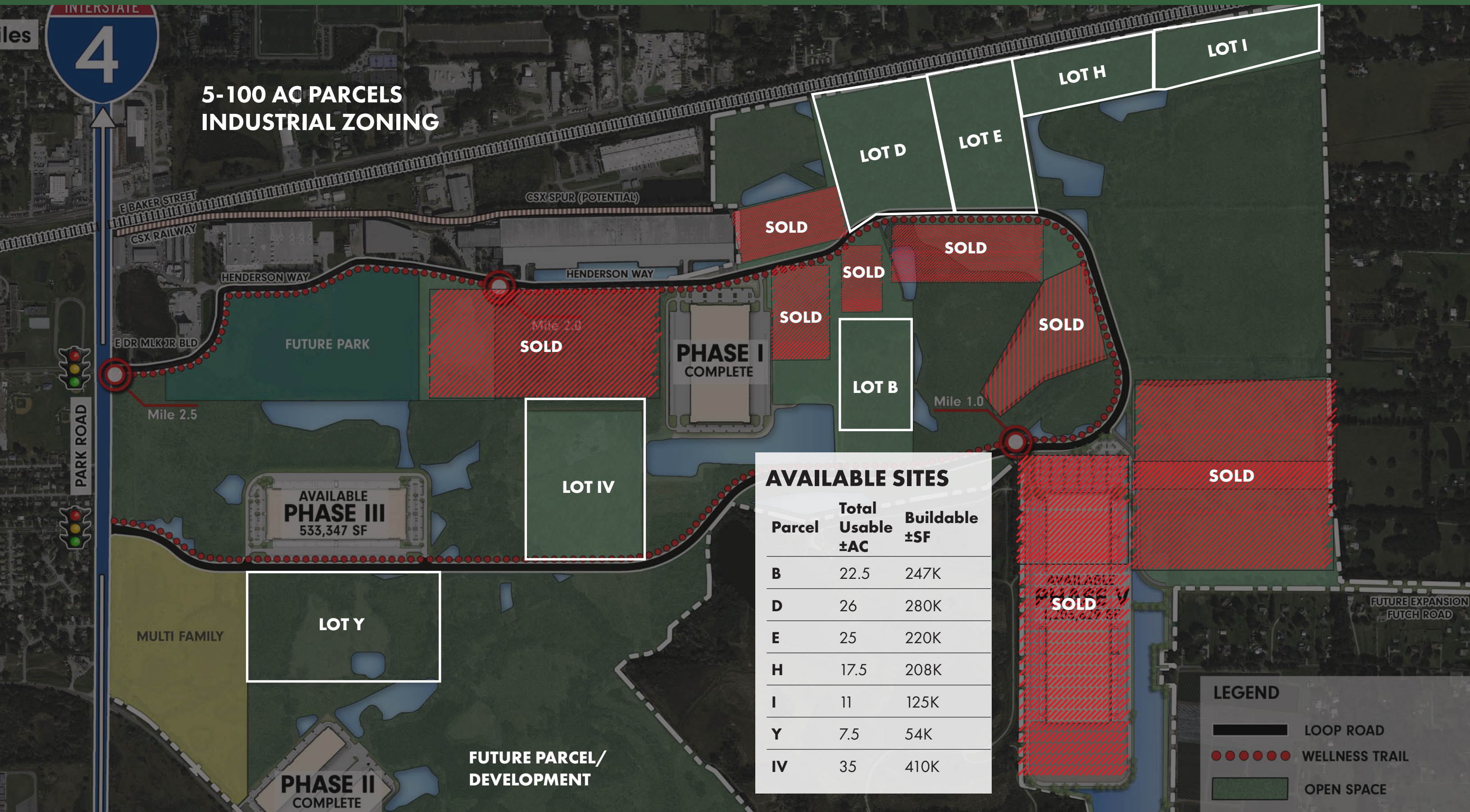


INDUSTRIAL LAND FOR SALE

PLANT CITY, FL



5-100 AC PARCELS
INDUSTRIAL ZONING

AVAILABLE SITES		
Parcel	Total Usable ±AC	Buildable ±SF
B	22.5	247K
D	26	280K
E	25	220K
H	17.5	208K
I	11	125K
Y	7.5	54K
IV	35	410K

LEGEND	
	LOOP ROAD
	WELLNESS TRAIL
	OPEN SPACE

AVAILABLE
PHASE III
533,347 SF

PHASE I
COMPLETE

PHASE II
COMPLETE

FUTURE PARCEL/
DEVELOPMENT

FUTURE EXPANSION
FUTCH ROAD

CSX SPUR (POTENTIAL)

HENDERSON WAY

HENDERSON WAY

E BAKER STREET

CSX RAILWAY

E DR MLK JR BLD

PARK ROAD

Mile 2.5

Mile 2.0

Mile 1.0

MULTI FAMILY

LOT Y

LOT IV

LOT B

LOT D

LOT E

LOT H

LOT I

SOLD

SOLD

SOLD

SOLD

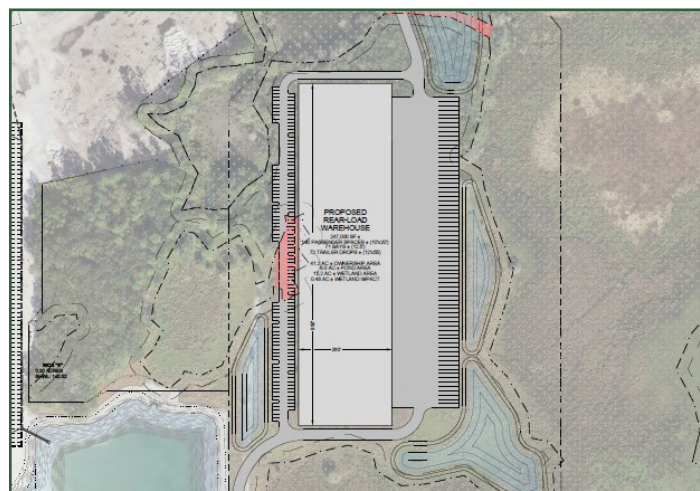
SOLD

SOLD

SOLD

INDUSTRIAL LAND FOR SALE

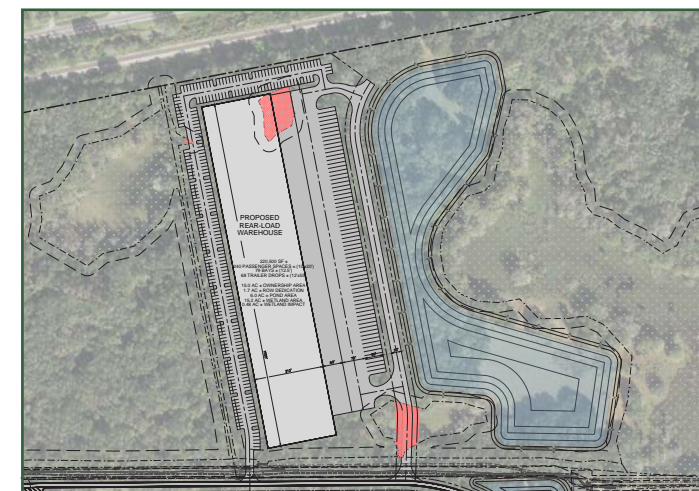
PLANT CITY, FL



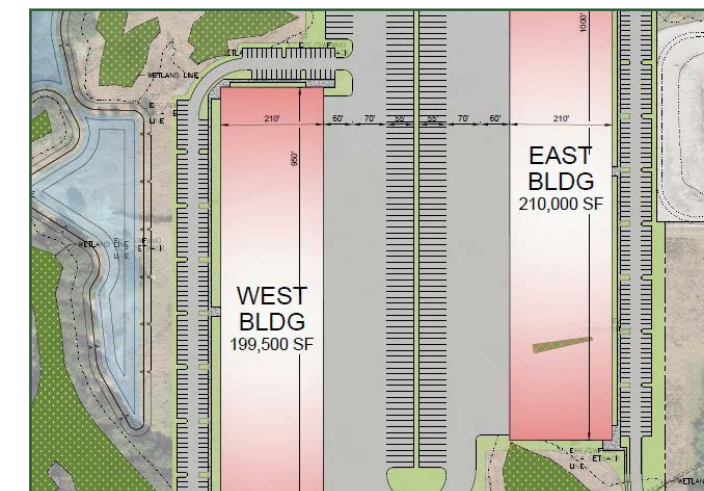
Parcel B
Total Usable ± AC : 22.5
Buildable ± SF: 247K



Parcel D
Total Usable ± AC : 26
Buildable ± SF: 280K



Parcel E
Total Usable ± AC : 25
Buildable ± SF: 220K



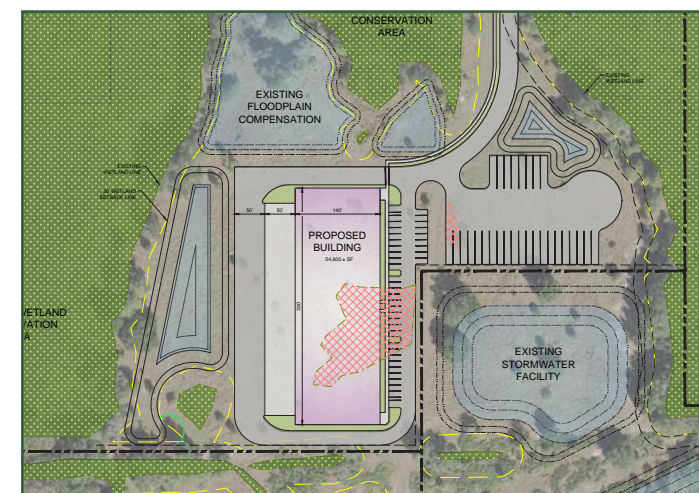
Parcel IV
Total Usable ± AC : 35
Buildable ± SF: 410K



Parcel H
Total Usable ± AC : 17.5
Buildable ± SF: 208K



Parcel I
Total Usable ± AC : 11
Buildable ± SF: 125K



Parcel Y
Total Usable ± AC : 7.5
Buildable ± SF: 54K

FOR MORE INFORMATION:

JUSTIN RUBY | 407.865.0311
justin.ruby@foundrycommercial.com

CAITLIN QUINLAN | 540.550.2549
caitlin.quinlan@foundrycommercial.com

JESSE DRAKE | 813.449.2955
jesse.drake@foundrycommercial.com



ACCESS & NEARBY TENANTS

PLANT CITY, FL



FOR MORE INFORMATION:

JUSTIN RUBY | 407.865.0311
justin.ruby@foundrycommercial.com

CAITLIN QUINLAN | 540.550.2549
caitlin.quinlan@foundrycommercial.com

JESSE DRAKE | 813.449.2955
jesse.drake@foundrycommercial.com