



ARES  
INDUSTRIAL  
MANAGEMENT

# ACCESS PARK

5281 LB MCLEOD RD, ORLANDO, FL 32811

FOR LEASE | 207,487 SQ FT | Class A Warehouse Facility



**FOUNDRY**  
COMMERCIAL

**JUSTIN RUBY, SIOR, CCIM**

Partner  
407-865-0311

**JOEY WOODMAN, SIOR**

Partner  
407-748-5888

**TRAVIS HAMMOND**

Vice President  
407-401-1707

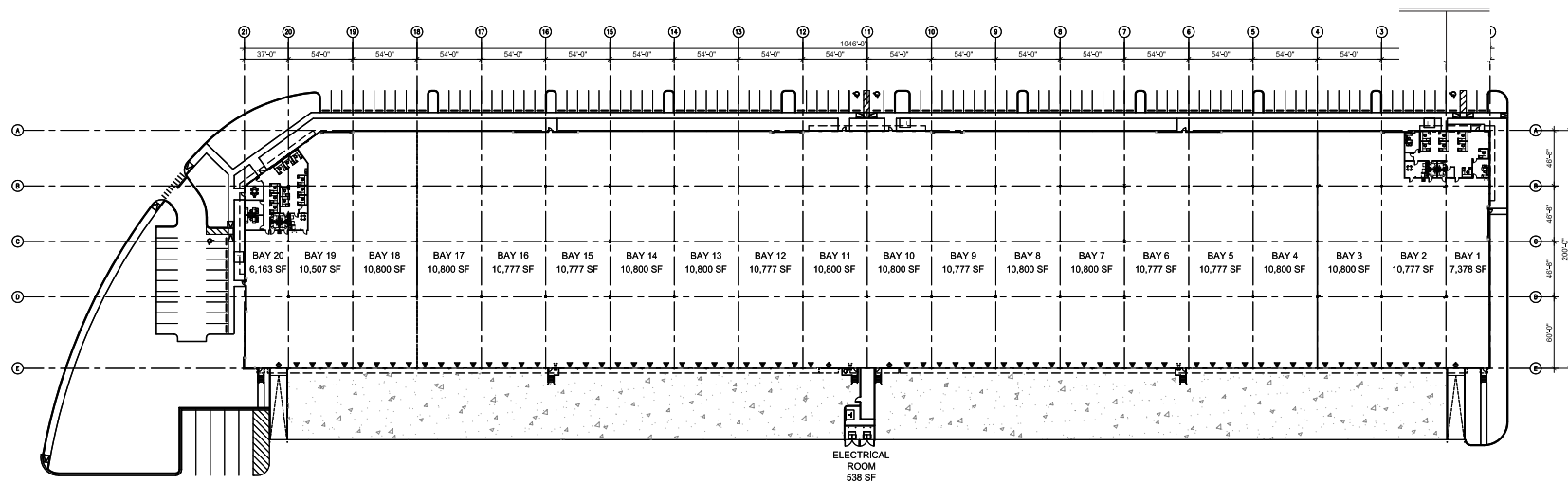
OWNED BY



ARES  
INDUSTRIAL  
MANAGEMENT

# Property FEATURES

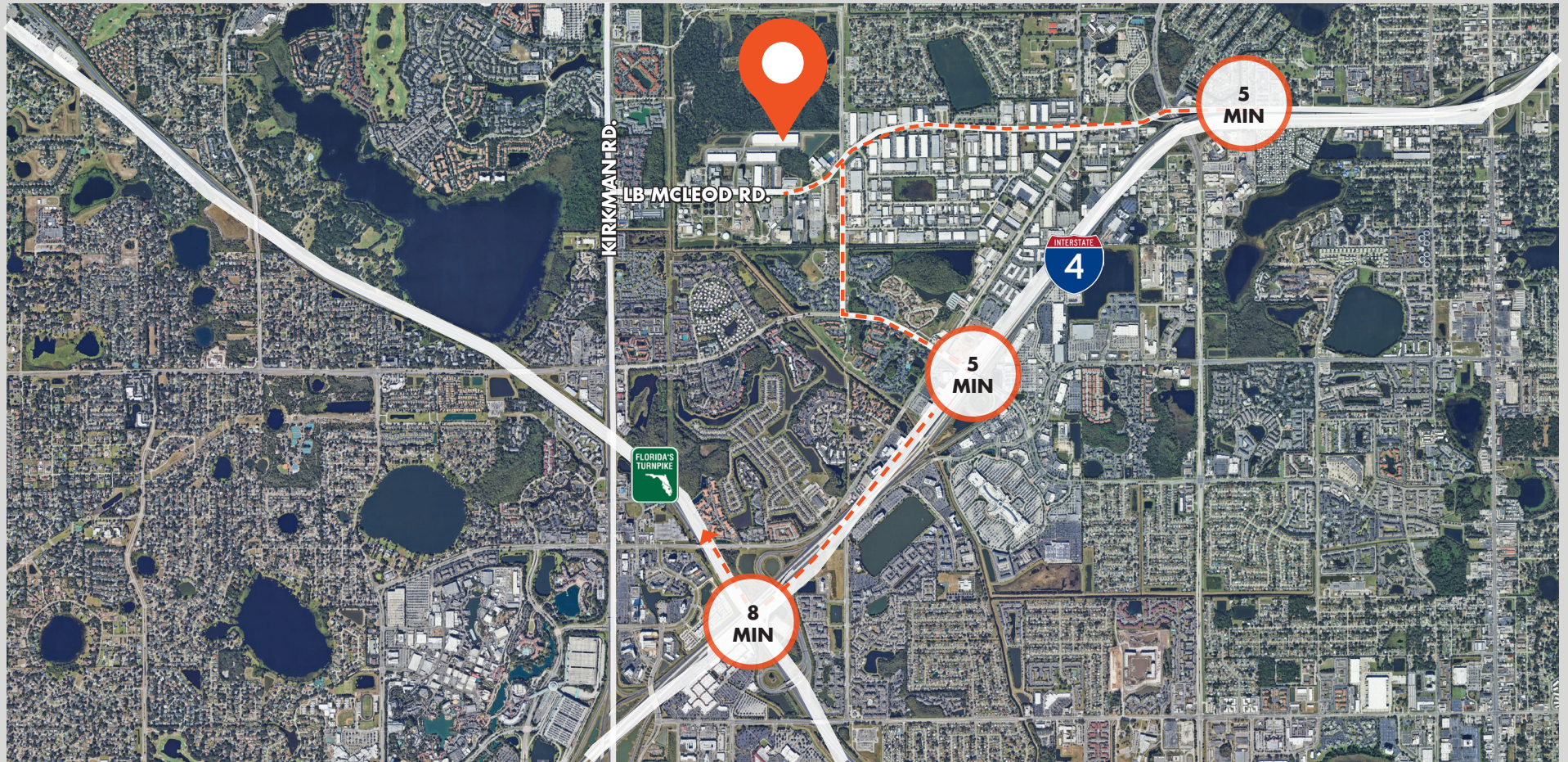
- 2,800 amps, 3 phase
- 2,500 Office
- 1.15/1,000 parking
- 5 trailer parks
- ESFR Sprinklers
- 36' clear
- 65 docks
- 220' truck court



ARES  
INDUSTRIAL  
MANAGEMENT

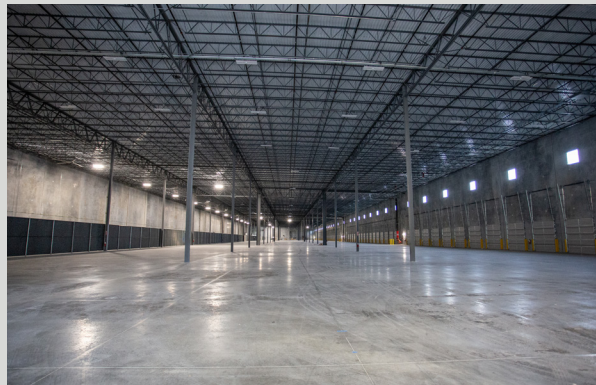
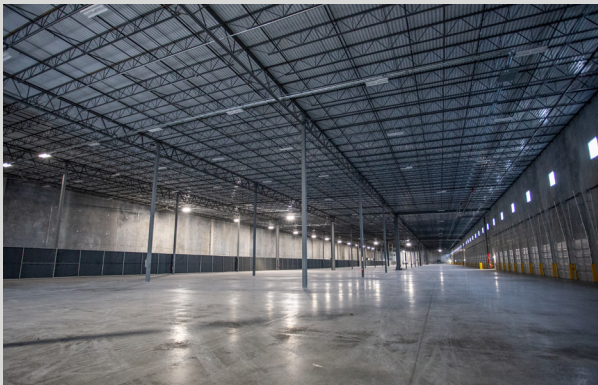
# Location HIGHLIGHTS

- Located off LB McLeod Rd
- Situated in the 33rd St Industrial submarket
- Convenient access to I-4
- Under 10 Minutes to the Turnpike



ARES  
INDUSTRIAL  
MANAGEMENT

# Property PHOTOS



### ABOUT ARES MANAGEMENT CORPORATION

Ares Management Corporation (NYSE: ARES) is a leading global alternative investment manager offering clients complementary primary and secondary investment solutions across the credit, private equity, real estate and infrastructure asset classes. We seek to provide flexible capital to support businesses and create value for our stakeholders and within our communities. By collaborating across our investment groups, we aim to generate consistent and attractive investment returns throughout market cycles. For more information, please visit [www.aresmgmt.com](http://www.aresmgmt.com).



**FOUNDRY**  
COMMERCIAL

**JUSTIN RUBY, SIOR, CCIM**

Partner  
407-865-0311

**JOEY WOODMAN, SIOR**

Partner  
407-748-5888

**TRAVIS HAMMOND**

Vice President  
407-401-1707



**ARES  
INDUSTRIAL  
MANAGEMENT**