

5000 West Elm Street  
McHenry, IL 60050

For Lease

MLS #12600566

RETAIL



RETAIL OFFICE SUITE & TURN KEY BARBERSHOP

\$1,000.00 - \$1,750.00 PER MONTH (MG)

**Retail / Office Suite (566 sft) &  
Turn-Key Barber Shop Suite (600 sft)**

Position your business for success in this high visibility commercial property. This building has 2 separate units available with the first being a retail / office suite, and the second being a fully built-out, turn-key barber shop.

Conveniently located along W Elm St, the site benefits from steady traffic counts, easy access, and on-site parking for both tenants and customers. Surrounded by established neighborhoods and local businesses, this location provides a built-in customer base and strong community presence.

Tenant is responsible for electric utility only as landlord covers water and gas.

**Property Highlights:**

- Retail / Office use suite available
- Turn-key barber shop available
- High visibility location with strong traffic exposure
- Ample parking on-site
- Well-maintained property in a growing commercial corridor

**Specifications**

Description:	Retail - Street Retail
Size:	2,214 SF
Year Built:	1963
HVAC System:	Heated Floors & PTAC
Lease Term:	3 years
Washrooms:	1 Per Unit
Ceiling Height:	8 ft
Parking:	Shared Lot
Sewer/Water:	City
Zoning:	C-5
Taxes:	Included
CAM:	Included
PIN #:	09-27-301-003

[CLICK HERE TO VIEW OUR WEBSITE](#)

*No warranty or representation is made as to the accuracy of the foregoing information. Terms of sale or lease and availability are subject to change or withdrawal without notice. This document is for information purposes only. No offer of sub-agency is being made.*



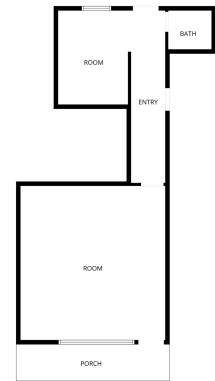
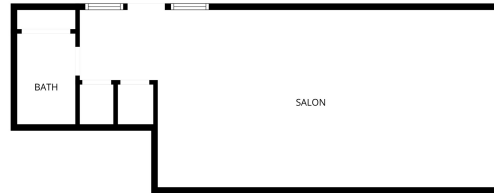
**Austin Schweitzer**  
Associate Broker  
AustinS@PremierCommercialRealty.com  
O: 847.854.2300 x16 C: 815.236.9972

**Heather Schweitzer**  
President / Designated Managing Broker  
HeatherS@PremierCommercialRealty.com  
O: 847.854.2300 x15 C: 815.236.9816

5000 West Elm Street  
McHenry, IL 60050

For Lease

RETAIL



FLOOR PLAN CREATED BY CIRCULAR SPACE MANAGEMENT. DIMENSIONS DERIVED FROM 3D RENDERINGS. NOT GUARANTEED.

[CLICK HERE TO VIEW OUR WEBSITE](#)

*No warranty or representation is made as to the accuracy of the foregoing information. Terms of sale or lease and availability are subject to change or withdrawal without notice. This document is for information purposes only. No offer of sub-agency is being made.*



**Austin Schweitzer**  
Associate Broker  
AustinS@PremierCommercialRealty.com  
O: 847.854.2300 x16 C: 815.236.9972

**Heather Schweitzer**  
President / Designated Managing Broker  
HeatherS@PremierCommercialRealty.com  
O: 847.854.2300 x15 C: 815.236.9816

5000 West Elm Street  
McHenry, IL 60050

For Lease

RETAIL



Map data ©2026 Google Imagery ©2026 Airbus, Landsat / Copernicus, Maxar Technologies, Vexcel Imaging US, Inc.

[CLICK HERE TO VIEW OUR WEBSITE](#)

*No warranty or representation is made as to the accuracy of the foregoing information. Terms of sale or lease and availability are subject to change or withdrawal without notice. This document is for information purposes only. No offer of sub-agency is being made.*



**Austin Schweitzer**  
Associate Broker  
AustinS@PremierCommercialRealty.com  
O: 847.854.2300 x16 C: 815.236.9972

**Heather Schweitzer**  
President / Designated Managing Broker  
HeatherS@PremierCommercialRealty.com  
O: 847.854.2300 x15 C: 815.236.9816