



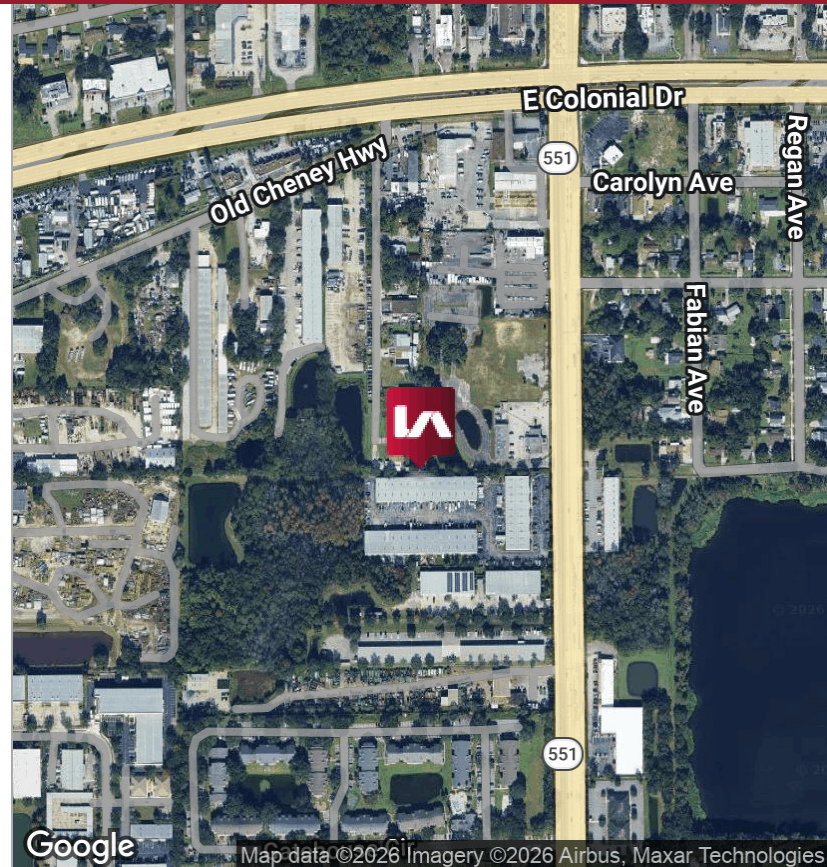
LISTING DATA

Available SF: Suites 310-340 | 2,191 - 8,727 SF
Clear Height: 17.5' - 20.5'
Zoning: IND-1/IND-5 (Orange County)
Loading: Front
Parking Ratio: 2.3/1,000 SF

Comments: Goldenrod Business Center is comprised of 3 Industrial/Flex buildings totaling 78,736 SF located in east central Orlando with convenient access to SR-50, SR-408, and SR-417. The project is professionally owned and managed making it an ideal location for years to come.

ECONOMIC DATA

Lease Rate: Call For Info



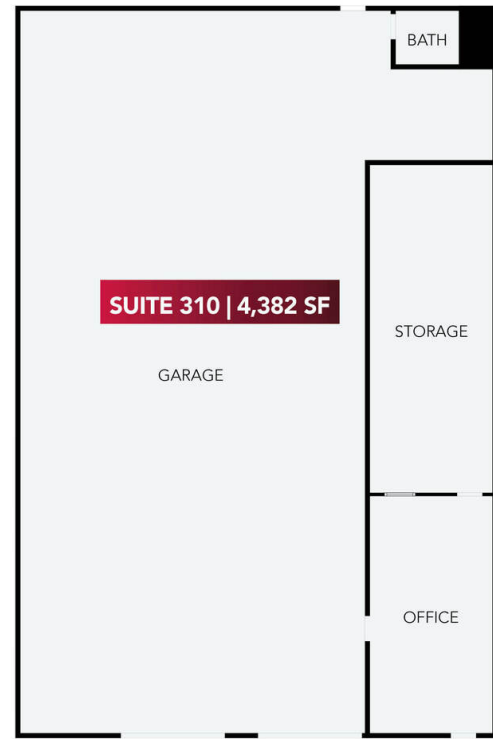
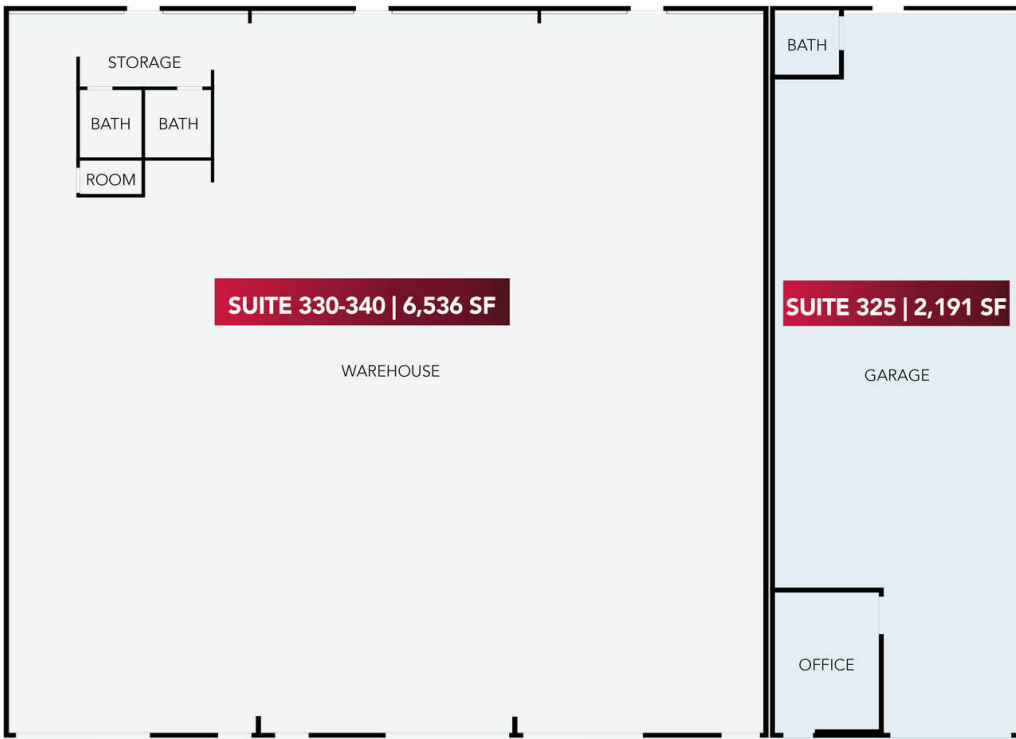


LEASE INFORMATION

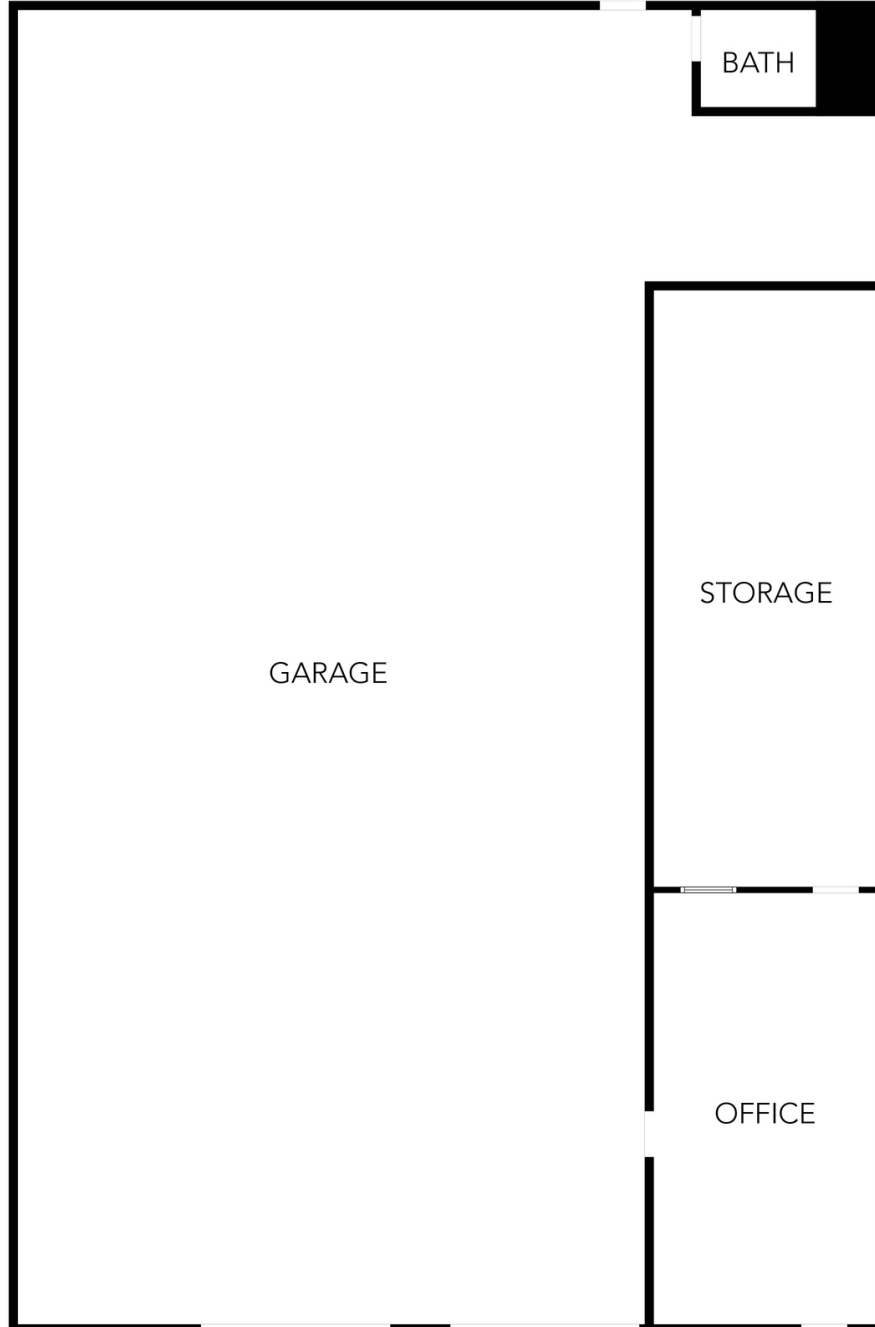
Lease Type:	NNN	Lease Term:	Negotiable
Total Space:	2,191 - 13,109 SF	Lease Rate:	Call For Info

AVAILABLE SPACES

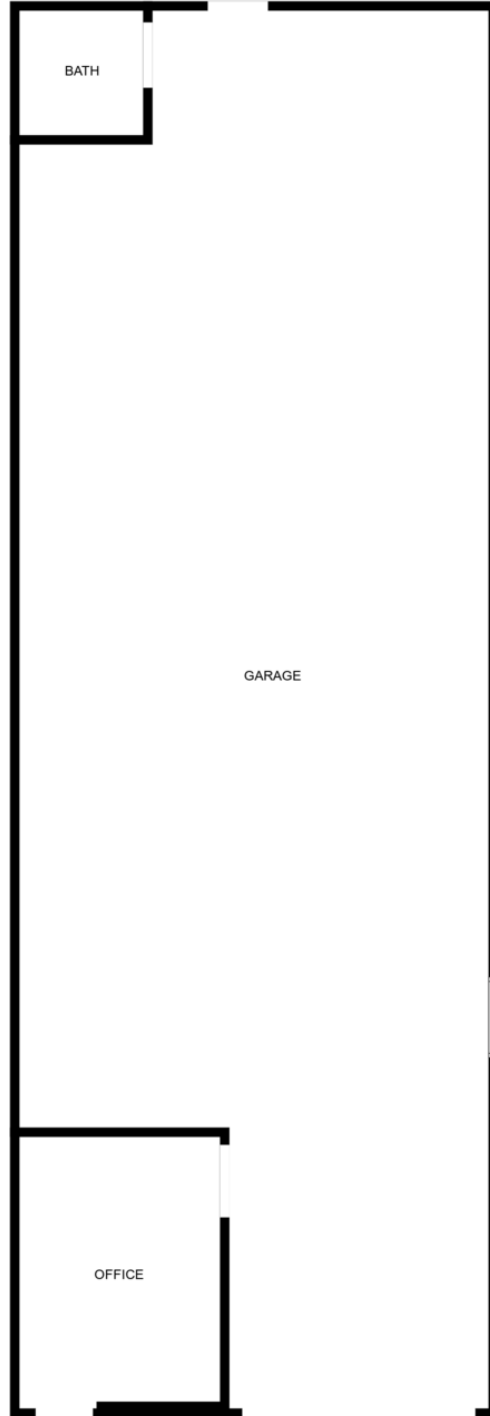
SUITE	SIZE (SF)	LEASE TYPE	LEASE RATE	DESCRIPTION
310	4,382 SF	NNN	Call For Info	700 SF Office and Two (2) Oversized Grade Level Doors
325	2,191 - 8,727 SF	NNN	Call For Info	256 SF Office and One 12' x 14' Grade Level Door
330-340	6,536 - 8,727 SF	NNN	Call For Info	250 SF Office and Three (3) 12' x 14' Grade Level Doors



SUITES 325 - 330/340 Contiguous to 8,727 SF

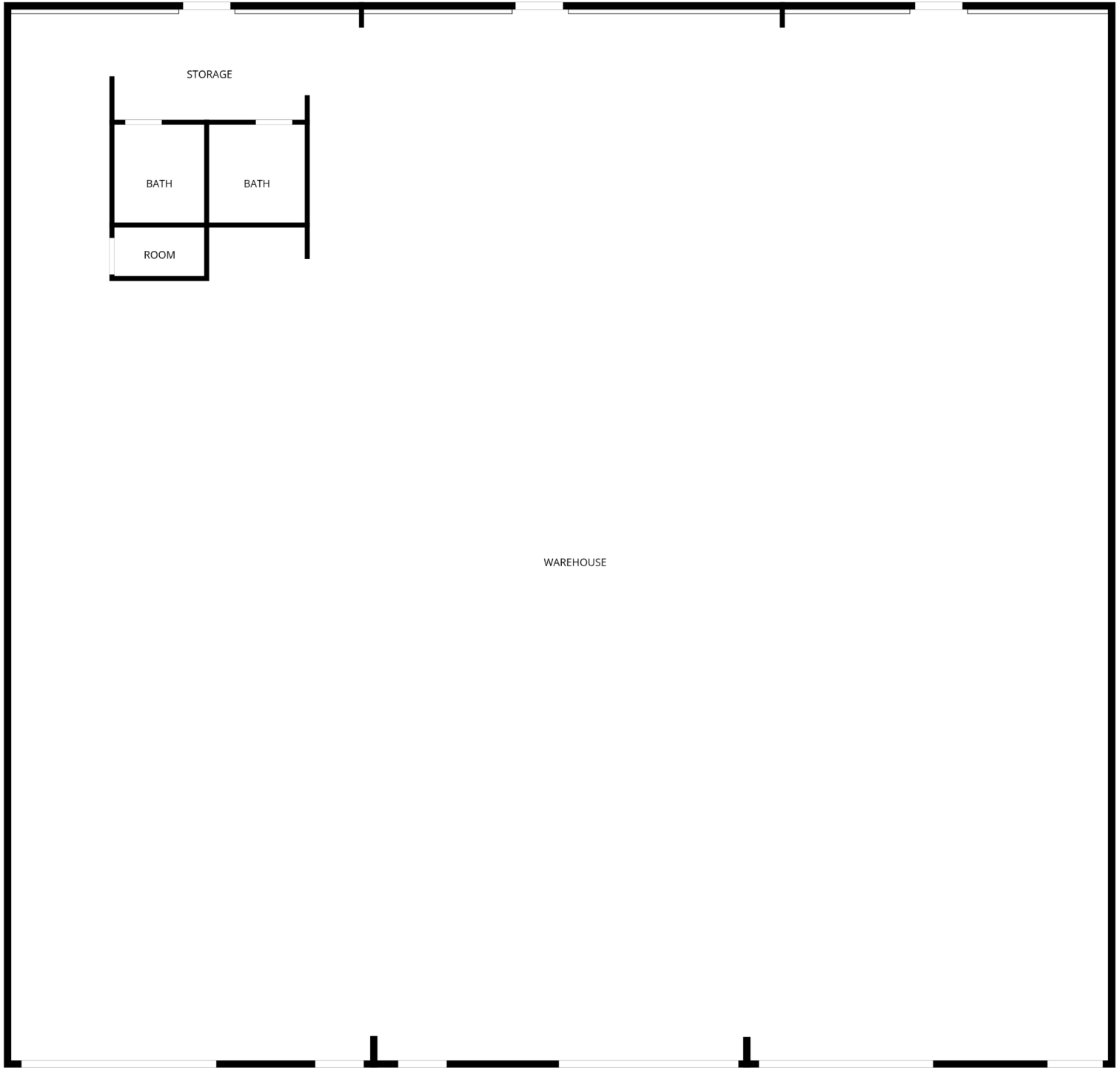


SUITE 310 | 4,382 SF - AVAILABLE NOW



FLOOR PLAN CREATED BY CUBICASA APP. MEASUREMENTS DEEMED HIGHLY RELIABLE BUT NOT GUARANTEED.

SUITE 325 | 2,191 SF - AVAILABLE NOW



SUITE 330-340 | 6,536 SF - WITHIN 30 DAYS

FLOOR PLAN CREATED BY CHICASA APP. MEASUREMENTS DEEMED HIGHLY RELIABLE BUT NOT GUARANTEED.